



Manuals.plus /

› Alpha Digital /

› Alpha Digital V8 Wireless Earbuds Instruction Manual

Alpha Digital V8

Alpha Digital V8 Wireless Earbuds Instruction Manual

Model: V8

1. INTRODUCTION

Thank you for choosing the Alpha Digital V8 Wireless Earbuds. These earbuds feature an LCD touch screen, Bluetooth 5.3 connectivity, active noise cancelling (ANC), and a lightweight, ergonomic design for an immersive audio experience. This manual provides detailed instructions for setup, operation, and maintenance to ensure optimal performance.

2. WHAT'S IN THE BOX

- Alpha Digital V8 Wireless Earbuds (Left and Right)
- Wireless Charging Case
- USB-C Charging Cable
- User Manual
- Multiple sizes of ear tips (typically S, M, L)

3. PRODUCT OVERVIEW

Earbuds and Charging Case

HI-FI STEREO SOUND ANC NOISE CANCELLING



The image displays the Alpha Digital V8 Wireless Earbuds nestled within their charging case, showcasing the sleek black design and the integrated LCD touch screen on the case.

LCD Full-Color Touch Screen Functions

TYPE-C FAST CHARGING

450 mAh
Charging Box

40 mAh
Earbuds

32 hours
Playing Time

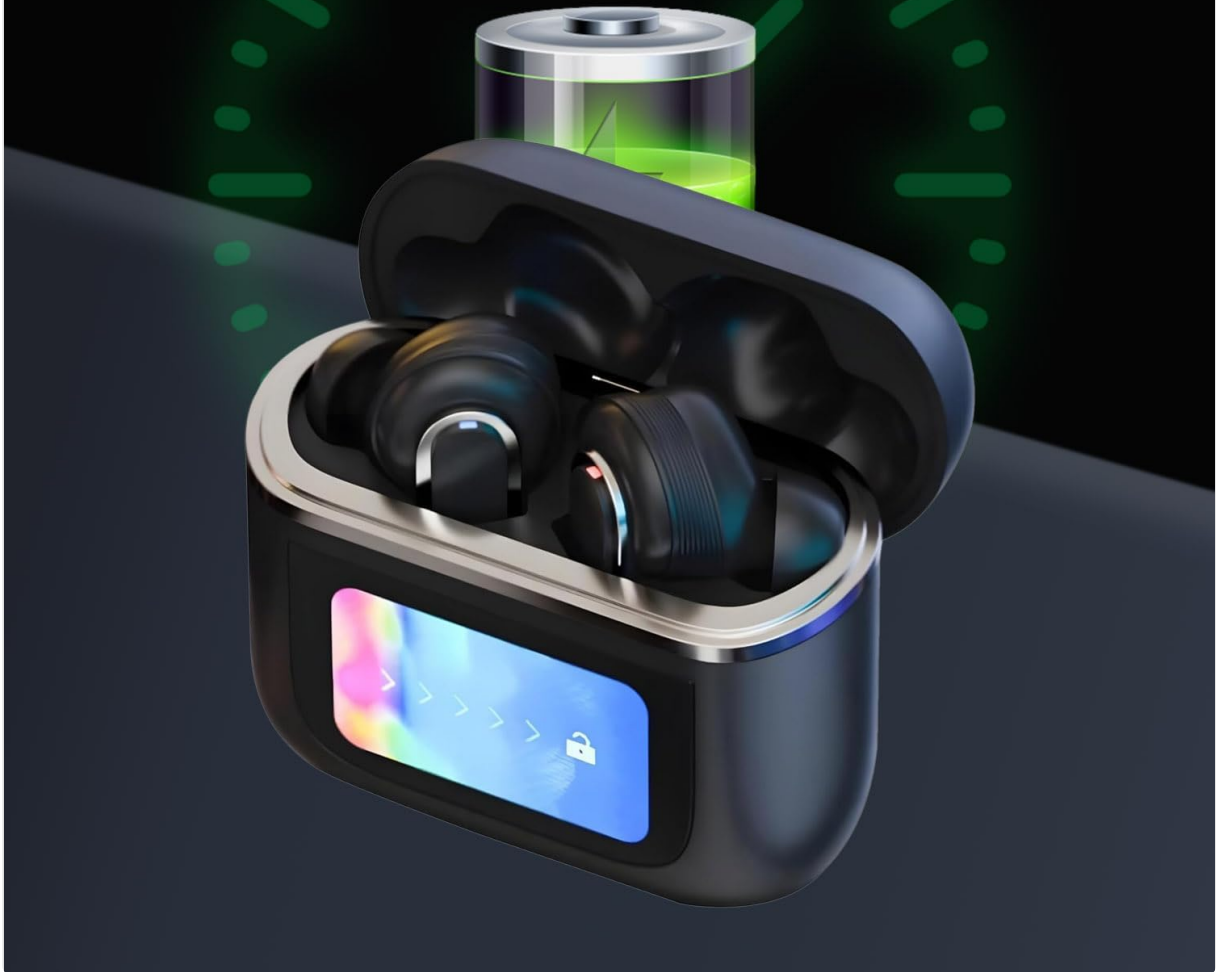
120 hours
Standby time



This image illustrates the various functions accessible via the 1.47-inch LCD full-color touch screen on the charging case, including music control, volume adjustment, language selection, flashlight, stop timer, ambient sound modes, spatial audio settings, brightness adjustment, and a 'Find Earbuds' feature.

Ergonomic Design

450MAH BATTERY CAPACITY
32 hours of super battery life



The diagram highlights the ergonomic in-ear design of the earbuds, emphasizing a stable and secure fit that prevents them from falling off during activity. Each earbud weighs approximately 4.6g.

Hi-Fi Stereo Sound

3D SPATIAL AUDIO

Immersive Listening Experience

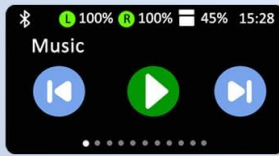


This graphic details the audio capabilities, including Hi-Fi Stereo Sound, powerful bass, and HD clear call quality, with an exploded view of an earbud's internal components.

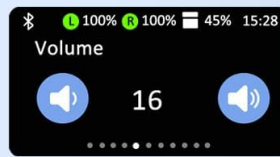
Intelligent Noise Reduction

LED Full-color Touch Screen Multiple Practical Functions

Music Control



Volume Adjustment



Language



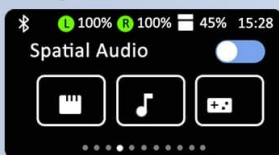
Sound Customization



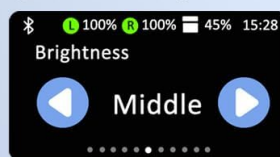
Ambient



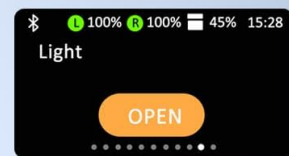
Spatial Audio



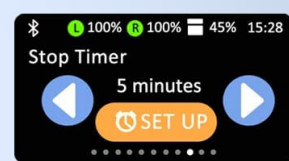
Brightness Adjustment



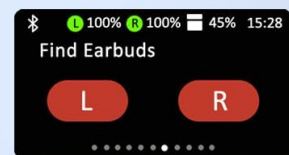
Flashlight



Stop Timer



Find Earbuds



A visual representation of the intelligent noise reduction feature, showing the difference in sound levels before and after activation. It also indicates the availability of both Transparency Mode and Noise Reduction Mode.

Earbud One-Touch Control



This image provides a clear guide to the one-touch controls on each earbud, detailing actions for pressing and holding, single clicks, double clicks, and triple clicks for various functions.

4. SETUP

4.1 Charging the Earbuds and Case

Before first use, fully charge the earbuds and charging case. The charging case has a 450mAh battery capacity, providing up to 32 hours of total playback time with the earbuds. The earbuds themselves offer over 6 hours of playback on a single charge.

- Connect the provided USB-C cable to the charging port on the case and a power source.
- The LCD screen on the case will display the charging status.
- The charging case takes approximately 1.5 hours to fully charge using USB-C fast charging.

ERGONOMIC DESIGN

In-Ear Design



Stable and not falling off



The image shows the charging case connected via a USB-C cable, indicating its fast-charging capability and battery specifications (450mAh for case, 40mAh for earbuds, 32 hours playing time, 120 hours standby time).

4.2 Pairing with Your Device

The Alpha Digital V8 earbuds support automatic power-on pairing after the first connection, and are compatible with Windows, Android, iOS, and all Bluetooth-enabled devices.

- **First-time Pairing:** Open the charging case. The earbuds will automatically power on and enter pairing mode.
- On your device (smartphone, tablet, computer), go to Bluetooth settings and search for available devices.
- Select "Alpha Digital V8" from the list to connect.
- Once connected, the earbuds will automatically pair with your device whenever you open the case.
- The earbuds can be used in **Single Mode** (one earbud) or **Binaural Mode** (both earbuds).



This image demonstrates the 'Quick Connect' feature, showing the earbuds and case near a laptop and smartphone, indicating automatic power-on pairing and the flexibility of single or binaural mode operation.

5. OPERATING INSTRUCTIONS

5.1 Using the LCD Touch Screen

The 1.47-inch LCD touch screen on the charging case provides intuitive control over various functions:

- **Music Control:** Play/pause, skip tracks (up/down song switch).
- **Volume Adjustment:** Control playback volume directly from the screen.
- **Language Selection:** Choose your preferred operating language.
- **Multi-Wallpaper Switch:** Customize the screen background.
- **Ambient Modes:** Switch between Active Noise Cancelling (ANC) and Transparency Mode.
- **Spatial Audio:** Adjust spatial audio settings for an immersive experience.
- **Flashlight:** Activate a small light feature.
- **Stop Timer:** Set a timer for various activities.
- **Brightness Adjustment:** Control screen brightness.
- **Find Earbuds:** Locate misplaced earbuds by triggering an audible signal.

5.2 Earbud Touch Controls

The earbuds feature one-touch control buttons for convenient management of audio and calls:

Action	Left Earbud Function	Right Earbud Function
Click 1 time	Play/Pause	Play/Pause
Click 2 times	Answer/Hang up call	Next track / Answer/Hang up call
Click 3 times	Previous song	Previous song
Press and hold for 2 seconds	Sound/Mute / Wake up Siri	Sound/Mute / Wake up Siri
Press and hold for 5 seconds	Noise reduction / Environment awareness	Noise reduction / Environment awareness

5.3 Active Noise Cancelling (ANC) & Transparency Mode

The earbuds offer two distinct listening modes:

- **Active Noise Cancelling (ANC):** Reduces ambient noise for an immersive audio experience. Activate by pressing and holding either earbud for 5 seconds.
- **Transparency Mode:** Allows you to hear your surroundings while still enjoying your audio, enhancing situational awareness. Activate by pressing and holding either earbud for 5 seconds to cycle through modes.

5.4 Official Product Video

Your browser does not support the video tag.

This official product video provides a visual overview of the Alpha Digital V8 Wireless Earbuds, demonstrating key features and functionalities. It highlights the LCD touch screen, noise cancelling capabilities, and ergonomic design.

6. MAINTENANCE

Proper maintenance ensures the longevity and performance of your earbuds:

- **Cleaning:** Regularly clean the earbuds and charging case with a soft, dry, lint-free cloth. Do not use abrasive materials or harsh chemicals.
- **Ear Tips:** Remove and clean the ear tips periodically with water and mild soap. Ensure they are completely dry before reattaching.
- **Storage:** When not in use, store the earbuds in their charging case to protect them from dust and damage.
- **Water Resistance:** The earbuds are IP4 waterproof, meaning they are resistant to splashes. Do not submerge them in water or expose them to heavy rain.
- **Temperature:** Avoid exposing the earbuds to extreme temperatures (hot or cold) or direct sunlight for extended periods.

7. TROUBLESHOOTING

If you encounter any issues, refer to the following common solutions:

Problem	Possible Solution
Earbuds not pairing	Ensure earbuds are charged. Turn off and on your device's Bluetooth. Forget the device in Bluetooth settings and re-pair.
No sound from one earbud	Place both earbuds back in the case, close it, then reopen. Check device's audio balance settings.
Charging case not charging	Ensure the USB-C cable is securely connected to both the case and the power source. Try a different cable or power adapter.
Touch controls unresponsive	Ensure your fingers are clean and dry. Restart the earbuds by placing them in the case and taking them out.
Poor sound quality	Ensure ear tips provide a good seal. Clean any debris from the earbud speakers. Move closer to your connected device.

If the issue persists after trying these steps, please contact customer support.

8. SPECIFICATIONS

Feature	Detail
Model Name	V8
Connectivity Technology	Wireless (Bluetooth 5.3)
Noise Control	Active Noise Cancellation
Display	1.47" LCD Full-color Touch Screen
Earbud Weight	Approx. 4.6g per earbud
Water Resistance Level	IP4 (Splashproof)
Earbud Battery Life	6 Hours (single charge)
Total Playback Time	32 Hours (with charging case)
Charging Case Capacity	450mAh
Charging Time (Case)	1.5 Hours (USB-C Fast Charging)
Microphones	Dual built-in microphones
Compatible Devices	Windows, Android, iOS, all Bluetooth-enabled devices
Material	Plastic, Silicone

9. WARRANTY AND SUPPORT

Alpha Digital products are designed for reliability and performance. For warranty information and customer support, please refer to the warranty card included in your product packaging or visit the official Alpha Digital website. Our support team is available to assist with any questions or concerns you may have regarding your V8 Wireless Earbuds.

