

## PROALLER OB20U-001

# PROALLER Heated Blanket Electric Blanket User Manual

Model: OB20U-001

## 1. INTRODUCTION

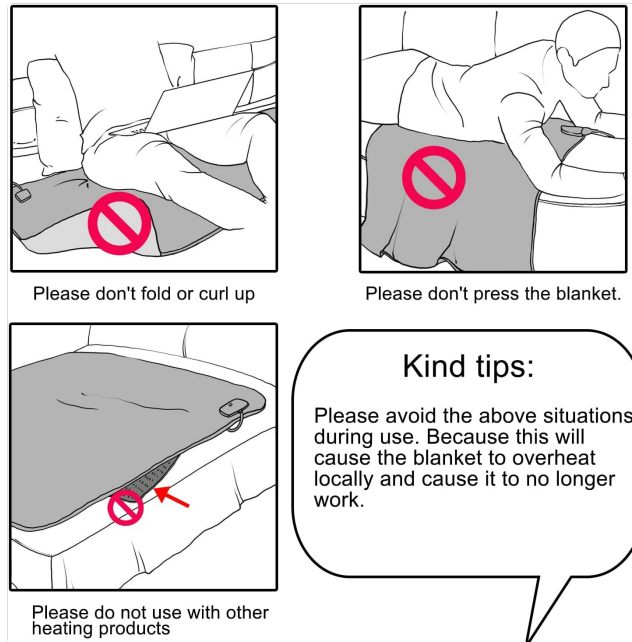
Thank you for choosing the PROALLER Heated Blanket. This electric blanket is designed to provide warmth and comfort with its soft flannel and sherpa materials, multiple heat settings, and a convenient timer function. Please read this manual thoroughly before use to ensure safe and proper operation.

## 2. IMPORTANT SAFETY INSTRUCTIONS

**WARNING: To reduce the risk of burns, electric shock, fire, or injury, this product must be used in accordance with the following instructions.**

- Read all instructions before using this heated blanket.
- Do not use this blanket with an infant, a child, an incapacitated person, a paraplegic, a quadriplegic, a diabetic, anyone insensitive to heat, or anyone who cannot clearly understand the instructions and/or operate the controls.
- Do not use this blanket if it is wet.
- Do not fold, bunch, or press the blanket during use. This can cause localized overheating and damage the heating elements.
- Do not use this blanket with other heating products, such as electric heating pads or other electric blankets.
- Always unplug the blanket from the electrical outlet when not in use.
- Keep the control unit away from drafts or open windows to prevent damage.
- Do not use pins or other metallic objects with this blanket as they may damage the wiring.
- Inspect the blanket, cord, and controller regularly for any signs of wear or damage. If any damage is found, discontinue use immediately and contact customer support.

- This blanket features an overheat and overcurrent protection system for safety. If the temperature exceeds safe limits, the power will automatically cut off.



**Figure 2.1:** Safety precautions illustrating how to avoid folding, pressing, or combining the heated blanket with other heating devices to prevent overheating.

### 3. PACKAGE CONTENTS

- 1 x PROALLER Heated Blanket (50x62 inches)
- 1 x Detachable Controller with Power Cord

### 4. PRODUCT OVERVIEW

The PROALLER Heated Blanket is designed for comfort and warmth. It features a reversible design with soft flannel on one side and plush sherpa on the other.



**Figure 4.1:** The PROALLER Heated Blanket, folded, showing its soft texture and the attached digital controller.



Figure 4.2: Detail of the blanket's reversible design, highlighting the soft flannel and plush sherpa sides.

## 4.1 Controller Features

The detachable controller allows you to manage the blanket's heat and timer settings.



Figure 4.3: The digital controller, displaying its buttons for power, heat adjustment, and timer settings.

- **Power Button:** Turns the blanket on or off.
- **Heat Level Button:** Adjusts between 10 heat settings.
- **Timer Button:** Sets the automatic shut-off timer from 1 to 9 hours.
- **Digital Display:** Shows current heat level and timer setting.

## 5. SETUP INSTRUCTIONS

1. **Unpack:** Carefully remove the heated blanket and controller from its packaging.
2. **Connect Controller:** Locate the connector on the blanket and firmly plug in the controller cable. Ensure a secure connection.

3. **Position Blanket:** Place the blanket flat on your bed, sofa, or desired surface. Ensure it is not folded, bunched, or tucked in tightly.
4. **Plug In:** Insert the power cord into a standard 120V AC electrical outlet.

## 6. OPERATING INSTRUCTIONS

1. **Power On:** Press the Power button on the controller to turn on the blanket. The digital display will illuminate.
2. **Adjust Heat Settings:** Press the Heat Level button to cycle through the 10 available heat settings (1 being the lowest, 10 being the highest). Select your desired warmth level.
3. **Set Timer:** Press the Timer button to set the automatic shut-off time. You can choose from 1 to 9 hours. The blanket will automatically turn off after the selected time has elapsed. If no timer is set, the blanket will default to a 9-hour auto-off.
4. **Power Off:** To turn off the blanket manually, press the Power button again. Always unplug the blanket from the wall outlet when not in use.



**Figure 6.1:** Illustration demonstrating the extensive and uniform heating distribution of the PROALLER blanket compared to other designs.



Figure 6.2: Performance graphs indicating fast heating capability and energy efficiency of the blanket.

## 7. MAINTENANCE AND CLEANING

The PROALLER Heated Blanket is machine washable for easy care. Always ensure the controller is detached before washing.



Figure 7.1: Visual guide for cleaning the heated blanket, emphasizing detachment of the controller and specific washing prohibitions.

1. **Disconnect:** Ensure the blanket is unplugged from the wall outlet and the controller is detached from the blanket.
2. **Machine Wash:** Machine wash the blanket on a gentle cycle with cold water (approximately 86°F / 30°C). Do not use hot water.
3. **Detergent:** Use a mild detergent. Do not use bleach or harsh chemicals.
4. **Rinse:** Rinse thoroughly.
5. **Dry:** Tumble dry on low heat or line dry. Ensure the blanket is completely dry before reconnecting the controller or storing. Do not dry-clean. Do not iron.
6. **Storage:** When not in use, store the blanket in a cool, dry place. Avoid folding it tightly or placing heavy objects on it, which could damage the internal wiring.

## 8. TROUBLESHOOTING

If you encounter any issues with your PROALLER Heated Blanket, please refer to the following common problems and solutions:

Problem	Possible Cause	Solution
Blanket is not heating.	Not plugged in; controller not connected properly; power outage.	Ensure power cord is securely plugged into a working outlet. Check that the controller is firmly connected to the blanket. Verify power supply.

Problem	Possible Cause	Solution
Controller display is off or flickering.	Loose connection; power issue.	Check all connections. Try plugging into a different outlet.
Blanket feels too hot in one area.	Blanket is folded, bunched, or pressed.	Immediately turn off and unplug the blanket. Lay the blanket flat and ensure it is not folded or bunched during use.
Blanket automatically turned off.	Timer expired; safety auto-off activated.	This is normal operation if the timer was set or if the safety system detected an issue. Check if the blanket was folded or bunched. Restart if desired after ensuring safe conditions.

## 9. SPECIFICATIONS

Feature	Detail
Model Name	OB20U-001
Dimensions	50 x 62 inches
Material	Flannel, Plush Sherpa
Color	Grey
Heat Settings	10 Levels
Timer Settings	1-9 Hours (Auto-Off)
Safety Features	Overheat & Overcurrent Protection
Care Instructions	Machine Washable (Detachable Controller)
Item Weight	3.78 pounds (1.72 Kilograms)
UPC	721295807968

## 10. WARRANTY AND SUPPORT

PROALLER products are manufactured to high-quality standards. For warranty information, technical support, or any questions regarding your heated blanket, please contact the manufacturer directly through their official channels. Keep your purchase receipt as proof of purchase.