

LAMTTO 765463550249

# LAMTTO Wireless Car Stereo Instruction Manual

Model: 765463550249

## 1. PRODUCT OVERVIEW

The LAMTTO Wireless Car Stereo is a portable 9-inch audio receiver designed to enhance your in-car experience with advanced features like wireless Apple CarPlay and Android Auto. It integrates a 4K front dash camera and a 1080P rear camera for comprehensive driving safety and recording. This device offers multiple audio output options including Bluetooth 5.0, FM transmission, and AUX connectivity, along with smart voice control via Siri or Google Assistant.



Image 1.1: LAMTTO Wireless Car Stereo and its components.

## Key Features:

- **9-inch Wireless CarPlay & Android Auto:** Seamless smartphone integration for navigation, music, and calls.
- **4K Front + 1080P Rear Dual Camera:** High-definition video recording for front and rear views, including a waterproof backup camera.
- **G-sensor & Loop Recording:** Automatic video locking upon collision and continuous recording management.
- **Wireless Mirror Link:** Display smartphone content directly on the car stereo screen.
- **Siri & Google Assistant Voice Control:** Hands-free operation for various functions.
- **Stable Bluetooth 5.0 & Multiple Audio Outputs:** Connects to car speakers via Bluetooth, FM transmission, or AUX cable.
- **Smart Live GPS Navigation:** Utilizes smartphone's navigation for real-time guidance.
- **Universal Compatibility & Easy Installation:** Designed for broad vehicle compatibility with flexible mounting options.

## 2. PACKAGE CONTENTS

Verify that all items listed below are included in your package. If any items are missing or damaged, please contact customer support.



Image 2.1: All components included in the package.

- 9-inch 4K Carplay with Dashcam (Main Unit)
- Adhesive Bracket
- Suction Cup Mount
- 1080P Rear Camera
- User Manual
- Crowbar (for cable routing)
- Small Screwdriver
- 64GB TF Card
- AUX Cable



- Type-C Car Charger
- Wire Buckle
- 3M Glue

### 3. SETUP AND INSTALLATION

The LAMTTO Wireless Car Stereo offers flexible installation options to suit various vehicle dashboards and user preferences.

#### 3.1 Mounting the Main Unit

You can choose between the adhesive bracket or the suction cup mount for securing the main unit to your dashboard or windshield.

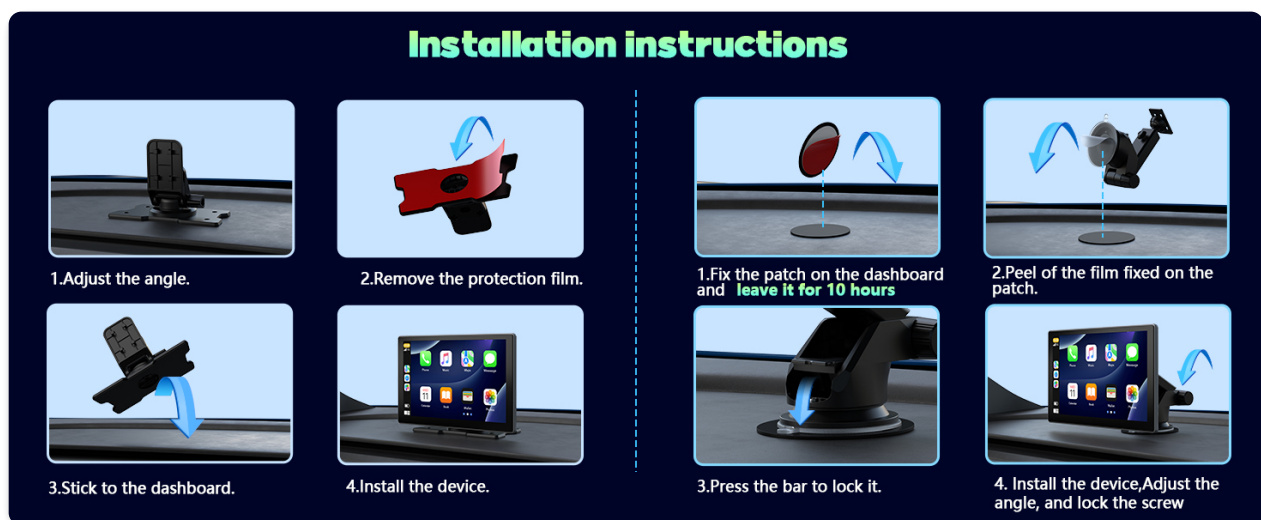


Image 3.1: Installation steps for the main unit.

##### 1. Adhesive Bracket Installation:

- Adjust the angle of the adhesive bracket.
- Remove the protection film from the adhesive pad.
- Fix the patch on the dashboard and leave it for 10 hours to ensure strong adhesion.
- Stick the bracket to the dashboard.
- Install the main device onto the bracket.

##### 2. Suction Cup Mount Installation:

- Peel the film fixed on the patch (if using a dashboard patch for suction).
- Press the bar to lock the suction cup onto a clean, smooth surface (windshield or dashboard patch).
- Install the main device, adjust the angle, and lock the screw to secure.

#### 3.2 Connecting Power and Cameras

Connect the Type-C car charger to the main unit and your car's power outlet. Route the cables neatly using the provided wire buckles and crowbar. Install the 1080P rear camera at the back of your vehicle, ensuring it has a clear view for reversing and recording.

## G-sensor

Automatically detect a sudden shake/collision and lock the footage to prevent the video from being overwritten even in loop recording



Image 3.2: Ensure optimal placement for clear driving vision.

## 4. OPERATING INSTRUCTIONS

### 4.1 Wireless CarPlay & Android Auto Connection

To connect your smartphone wirelessly, ensure Bluetooth and Wi-Fi are enabled on your phone.



Image 4.1: Wireless CarPlay and Android Auto in use.

1. On the car stereo screen, select either 'Apple CarPlay' or 'Android Auto'.
2. On your iPhone, turn on Wi-Fi and Bluetooth. For Android, turn on Wi-Fi.
3. Search for the device's Bluetooth name (e.g., 'T86xxxx') on your phone and pair.
4. Confirm the pairing code if prompted. The connection should be successful.

*Note: This device is compatible with iOS 8 and above, and Android 11 and above. It is not suitable for Huawei and Xiaomi phones.*

## 4.2 Wireless Mirror Link

Mirror Link allows you to display your smartphone's screen content directly on the car stereo.



## Wireless Mirror Link

Connect your smartphone with carplay screen, then you can play videos on carplay screen.



Image 4.2: Wireless Mirror Link functionality.

1. Select 'Apple Airplay' or 'Android Cast' on the car stereo.
2. Ensure Wi-Fi is on your smartphone.
3. For iPhone, use the 'Screen Mirroring' function from your control center. For Android, scan the QR code on the screen to download the 'TcLink' app and follow its instructions.
4. Select the device name (e.g., 'CARLINK-XXXX') to complete screen mirroring.

*Note: This feature does not support Netflix.*

### 4.3 Dash Cam Operation (4K Front + 1080P Rear)

The integrated dash cam system provides high-definition recording for both front and rear views of your vehicle.

## 4K+1080P Front & Rear Dual Camera



Image 4.3: Overview of the dual camera system.

- **Recording:** The system automatically begins recording when powered on. Video files are saved to the included 64GB TF card.
- **Loop Recording:** When the memory card is full, the system will automatically overwrite the oldest unlocked recordings with new files, ensuring continuous recording.
- **G-sensor:** In the event of a sudden shake or collision, the built-in G-sensor will automatically detect the impact and lock the current video file, preventing it from being overwritten by loop recording.
- **Parking Monitoring:** For 24-hour parking monitoring, a separate hardwire kit (not included) is required.
- **Night Vision:** The front camera features advanced night vision capabilities to capture clear images in low-light conditions.
- **Rear Camera:** The 1080P waterproof rear camera provides a wide 170° viewing angle and adjustable reverse lines for parking assistance.



## Loop Recording & G-sensor

Built-in 4K front camera and 64G TF Card, when detects a sudden shock or collision, the camera will automatically lock video and can achieve continues recording.



Image 4.4: Loop Recording and G-sensor features.

### 4.4 Audio Output Options

The car stereo has built-in speakers, but for enhanced audio, you can connect to your car's speaker system.



Image 4.5: Audio connection methods.

- **Bluetooth 5.0:** Connect wirelessly to your car's Bluetooth system for audio playback and hands-free calling.
- **FM Transmission:** Tune your car's FM radio to the same frequency as the car stereo to transmit audio.
- **AUX Cable:** Connect the included AUX cable from the car stereo to your car's AUX input jack.

## 4.5 Smart Voice Control

Utilize Siri or Google Assistant for hands-free control of navigation, music, messages, and calls. Simply activate the voice assistant through the car stereo and speak your commands.

## 4.6 Smart Brightness Adjustment

The screen features automatic brightness adjustment based on ambient light conditions, ensuring optimal visibility during both day and night driving.



# Geteilte Bildschirmanzeige und Touchscreen



Image 4.6: Smart Brightness Adjustment.

## 5. MAINTENANCE

Proper maintenance ensures the longevity and optimal performance of your LAMTTO Wireless Car Stereo.

- **Cleaning:** Use a soft, dry cloth to clean the screen and exterior of the unit. Avoid abrasive cleaners or solvents that could damage the surface.
- **Software Updates:** While specific update schedules are unknown, it is recommended to check the manufacturer's website periodically for any available firmware updates to ensure the best performance and compatibility.
- **TF Card Management:** Regularly back up important video files from the 64GB TF card to an external storage device. Format the TF card periodically (e.g., once a month) to maintain optimal recording performance.



## 6. TROUBLESHOOTING

If you encounter issues with your LAMTTO Wireless Car Stereo, refer to the following common problems and solutions:

Problem	Possible Cause	Solution
Device does not power on.	No power connection or faulty power adapter.	Ensure the Type-C car charger is securely connected to both the unit and the car's power outlet. Check the car's fuse for the power outlet.
Wireless CarPlay/Android Auto fails to connect.	Bluetooth/Wi-Fi off, incorrect pairing, or incompatible phone model.	Ensure Bluetooth and Wi-Fi are enabled on your phone. Re-attempt pairing. Verify your phone's OS version (iOS 8+ / Android 11+). Note: Not compatible with Huawei and Xiaomi phones.
No audio output from car speakers.	Incorrect audio output setting, FM interference, or loose AUX cable.	Check the audio output mode (Bluetooth, FM, AUX) on the stereo. If using FM, try a different frequency. Ensure AUX cable is fully inserted.
Dash cam recording issues (e.g., not saving, poor quality).	TF card full, faulty TF card, or lens obstruction.	Check TF card storage. Format the TF card. Ensure camera lenses are clean and unobstructed. Replace TF card if necessary.
Screen is too dim or too bright.	Automatic brightness adjustment issue or manual setting.	Check the brightness settings in the device menu. Ensure the light sensor is not obstructed.
Incompatibility with certain car models.	Known model limitations.	This unit is generally suitable for older models (2016-2020). It is not compatible with Kia Rio, Skoda Octavia 2015/2016, Mercedes C230 2017, Audi A7 2017 (some functions abnormal), Hyundai Kona 2018, Volvo V60 2021.

## 7. SPECIFICATIONS

Detailed technical specifications for the LAMTTO Wireless Car Stereo.

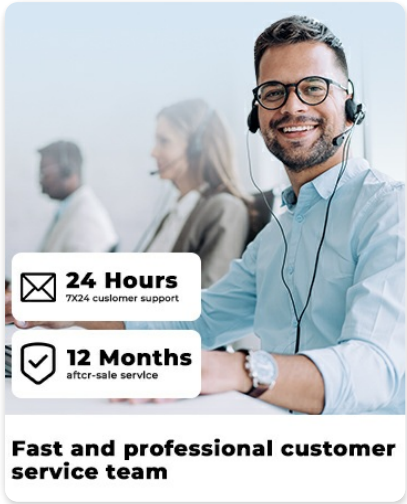
Feature	Detail
Brand	LAMTTO
Model Number	765463550249

Feature	Detail
Package Dimensions	26.2 x 16.5 x 9.9 cm
Item Weight	1.22 kg
Connectivity Technology	Auxiliary, Bluetooth 5.0, Wi-Fi
Controller Type	Wired Remote, Built-In Buttons
Special Features	Touchscreen, Loop Recording, Built-In Bluetooth, Android Auto, CarPlay with 4K+1080P Dashcam
Compatible Devices	Smartphone (iOS 8+, Android 11+)
Total HDMI Ports	1
Connector Type	3.5mm Jack (AUX), Type-C (Power)
Audio Output Mode	Stereo, Mono
Surround-Sound Channel Configuration	5.1
Video Encoding	H.264 or H.265
Country of Origin	China







## 8. WARRANTY AND SUPPORT

LAMTTO is committed to providing excellent customer service and support for its products.

- **Warranty:** This product comes with a 2-year warranty from the date of purchase.
- **Money-Back Guarantee:** A 30-day money-back guarantee is offered.
- **Technical Support:** Lifetime technical support is available. For any questions regarding installation or use, please contact the LAMTTO customer service team. They aim to reply within 24 hours.



Related Documents - 765463550249

	<p><a href="#">RC05 10.26 Inch Smart Screen Player User Manual   LAMTTO</a></p> <p>Comprehensive user manual for the LAMTTO RC05 10.26 Inch Smart Screen Player. Learn about installation, features like Apple CarPlay and Android Auto, FM transmit, and troubleshooting.</p>
	<p><a href="#">RM01 Touch Screen Streaming Video Rear View Mirror User Manual</a></p> <p>Comprehensive user manual for the LAMTTO RM01, a 10-inch touch screen streaming video rear view mirror and dash camera. This guide covers installation, features, setup, operations, and troubleshooting.</p>
	<p><a href="#">Carplay Smart Screen User Manual</a></p> <p>User manual for the Carplay Smart Screen, detailing product overview, composition, description, wiring instructions, installation methods, and FAQs. Supports Apple CarPlay and Android Auto.</p>
	<p><a href="#">Lamtto RC04: Wireless Carplay &amp; Android Auto User Guide</a></p> <p>This guide provides instructions for connecting and using the Lamtto RC04 device with Apple Carplay and Android Auto, covering setup, features, FM transmission, AUX output, and troubleshooting.</p>
	<p><a href="#">Portable Smart Screen User Manual</a></p> <p>User manual for the Portable Smart Screen, detailing its features, connection methods (Carplay, Android Auto, Airplay, Super Link), and audio output options. Includes instructions for setup and troubleshooting. This document is available in multiple languages.</p>
	<p><a href="#">C450 3 Channel 4K Dash Cam iOS WiFi Instruction Manual</a></p> <p>Step-by-step guide for connecting and setting up the LAMTTO C450 3 Channel 4K Dash Cam with an iOS device via WiFi using the GuardCamera app. Covers WiFi connection, app configuration, permission settings, and viewing live footage.</p>



