

[Manuals.plus](#) /

> [Deerma](#) /

> [Deerma Vacuum Cleaners for Home, 590W Self Emptying Anti-Tangle Cordless Stick Vacuum Cleaner Cordless Rechargeable Vacuum Rechargeable Dog Hair Vacuum for Carpet Hardwood Tile Couch Stairs Station](#)

## Deerma DEM-T50station-US

# Deerma Cordless Stick Vacuum Cleaner User Manual

Model: DEM-T50station-US

## 1. INTRODUCTION

---

This user manual provides detailed instructions for the safe and efficient operation, maintenance, and troubleshooting of your Deerma 590W Self Emptying Anti-Tangle Cordless Stick Vacuum Cleaner. Please read this manual thoroughly before first use and keep it for future reference.

## 2. IMPORTANT SAFETY INSTRUCTIONS

---

Always follow basic safety precautions when using electrical appliances to reduce the risk of fire, electric shock, or injury.

- Do not use outdoors or on wet surfaces.
- Do not allow to be used as a toy. Close attention is necessary when used by or near children.
- Use only as described in this manual. Use only manufacturer's recommended attachments.
- Do not use with damaged cord or plug. If appliance is not working as it should, has been dropped, damaged, left outdoors, or dropped into water, return it to a service center.
- Do not pull or carry by cord, use cord as a handle, close a door on cord, or pull cord around sharp edges or corners. Do not run appliance over cord. Keep cord away from heated surfaces.
- Do not unplug by pulling on cord. To unplug, grasp the plug, not the cord.
- Do not handle plug or appliance with wet hands.
- Do not put any object into openings. Do not use with any opening blocked; keep free of dust, lint, hair, and anything that may reduce air flow.
- Keep hair, loose clothing, fingers, and all parts of body away from openings and moving parts.

- Do not pick up anything that is burning or smoking, such as cigarettes, matches, or hot ashes.
- Do not use to pick up flammable or combustible liquids, such as gasoline, or use in areas where they may be present.
- Do not use without dust cup and/or filters in place.
- Turn off all controls before unplugging.
- Use extra care when cleaning on stairs.
- Store the appliance indoors. Put the appliance away after use to prevent accidents.

### 3. PRODUCT COMPONENTS

The Deerma T50 Station vacuum cleaner comes with various components for versatile cleaning.



Image: All components of the Deerma T50 Station vacuum cleaner, including the main unit, base station, various brushes, and

accessories.

- Main Unit (Handheld Vacuum)
- Base Station (for charging and self-emptying)
- Extension Hose
- Electric Floor Brush
- Electric Carpet Brush
- Pet Hair Brush
- 2-in-1 Long Crevice Nozzle
- Wide-mouth Soft Brush
- Hair Screw Tool
- Dust Bag (x2)
- User Manual
- Adapter

## 4. SETUP GUIDE

---

### 4.1 Initial Charging

Before using your Deerma T50 Station for the first time, it is recommended to fully charge the device.

1. Connect the base station to a power source.
2. Place the main vacuum unit onto the base station, ensuring the two sets of charging contacts are in full contact.
3. When charging, the battery level indicator light on the screen will flash. The screen will turn off 1 minute after the device is fully charged.

Your browser does not support the video tag.

*Video: Demonstrates initial charging and battery pack installation. Note: The vacuum cleaner cannot work while being charged.*

### 4.2 Battery Pack Installation

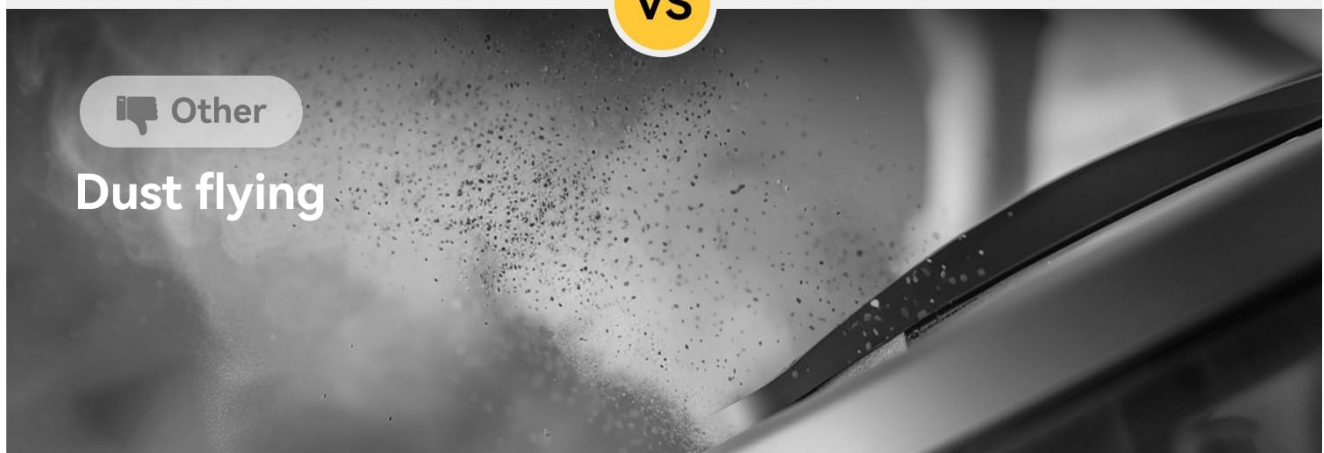
To install the battery pack:

1. Align the battery pack with the handle bayonet mount on the main unit.
2. Push it forward forcefully until you hear two "click" sounds, indicating secure installation.

*Refer to the video above for visual guidance on battery pack installation.*

### 4.3 Choosing and Attaching Brush Heads

The Deerma T50 Station comes with 7 different vacuum brush heads for various cleaning needs.



*Image: Overview of the main unit, base station, and all included brush heads and accessories.*

#### **For Daily Floor Cleaning (Floor Brush):**

1. Insert the extension hose into the main unit in the correct position.
2. Then insert the floor brush head into the extension hose in the correct position. A "click" sound indicates that it is installed properly.

*Refer to the video in the "Setup Guide" section for visual guidance on attaching the floor brush.*

#### **For Carpet Cleaning (Carpet Brush):**

If you need to clean carpets, you can press the release button on the floor brush to take it out, and then insert the carpet brush into the extension tube in the correct position.



*Image: The carpet brush showing the adjustable air release valve. When the valve is on the right side, it is suitable for picking up soybean-size items and easy to push on carpet. When it is in the middle, it is suitable for sucking particles similar to rice. When it is on the left side, it is suitable for sucking particles similar to dust or millet.*

Adjust the air release valve of the carpet brush to control the size of the particles to be sucked in:

- **Right side:** Suitable for picking up soybean-size items and easy to push on carpet.
- **Middle:** Suitable for sucking particles similar to rice.
- **Left side:** Suitable for sucking particles similar to dust or millet.

*Refer to the video in the "Setup Guide" section for visual guidance on attaching the carpet brush.*

#### **Direct Attachment to Main Unit:**

If there is no need to connect with the extension hose, you can press the release button on the extension hose and pull it out. The 2-in-1 long crevice nozzle, hair screw tool, and wide-mouth soft brush can be directly inserted into the main body of the machine. A "click" sound indicates that they are installed properly.

# Anti-hair Tangle Design



*Image: The main unit with various attachments, including the 2-in-1 long crevice nozzle, hair screw tool, and wide-mouth soft brush.*

- **2-in-1 Long Crevice Nozzle:** Hold down the switch button on the suction head, and you can switch between the brush and the crevice nozzle at will. It is suitable for narrow areas such as the gaps of sofas.
- **Hair Screw Tool:** Can deeply clean long hair, pet hair and the dust hidden in mattresses and deep inside sofas.
- **Wide-mouth Soft Brush:** Suitable for quickly cleaning the surface dust in homes and car interiors.

*Refer to the video in the "Setup Guide" section for visual guidance on attaching these tools.*

## Using the Extension Hose with other tools:

The non-marking soft brush and the comb brush need to be connected through a 60cm extension hose.

1. Insert the extension hose into the main body of the machine.
2. Attach the desired brush head to the other end of the extension hose.



Image: Non-marking soft brush and comb brush accessories.

- **Non-marking Soft Brush:** Suitable for cleaning hard-to-clean places such as computer keyboards and car central control panels. Hold the brush cover and quickly clean the dust on the brush bristles by pushing and rubbing.
- **Comb Brush:** Suitable for cleaning the floating hair on the surface of pets. Push it upward, and the hair-separating key can make the hair separate from the brush teeth and be automatically sucked into the pipeline.

Refer to the video in the "Setup Guide" section for visual guidance on using these tools with the extension hose.

## 5. OPERATING THE VACUUM CLEANER

### 5.1 Power On/Off and Mode Selection

To turn on the device, briefly press the power button. The standard mode is enabled by default when it is turned on. Briefly press the mode button to cyclically switch the modes among the powerful mode, energy-saving mode and standard mode, and the corresponding icons will light up.

Long press the mode button for 5 seconds, and the product will operate in the Turbo mode. (Attention: The Turbo mode cannot be switched when the battery level is lower than 20%.)



Image: The display panel of the vacuum cleaner showing Eco mode, Standard mode, Boost mode, and Turbo mode indicators.

Refer to the video in the "Operating the Vacuum Cleaner" section for visual guidance on power and mode selection.

### 5.2 Cleaning Operation

After adjusting to the appropriate gear, hold the handle and push or pull the vacuum cleaner to start cleaning.

Up To **90** mins

Up to 90min in Eco mode with crevice tool at full charge



*Image: A person using the Deerma T50 Station vacuum cleaner on a hard floor, highlighting the green light for dust detection.*

*Refer to the video in the "Operating the Vacuum Cleaner" section for visual guidance on cleaning.*

## 6. CLEANING & MAINTENANCE

---

Regular cleaning and maintenance ensure optimal performance and longevity of your vacuum cleaner.

### 6.1 Cleaning the Dust Cup

After using the product, there are three ways to clean the garbage in the dust cup:

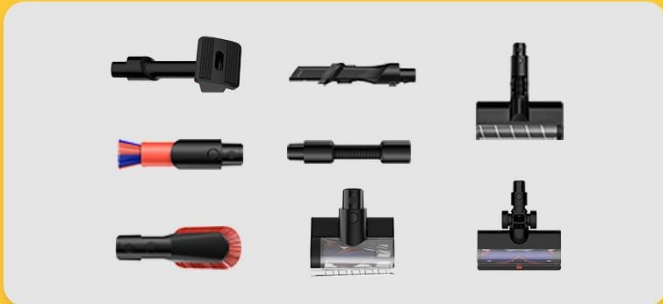
#### **Method 1: Automatic Cleaning via Base Station**

Place the machine on the base station. Press the power button of the base station to start the base station. The top rod of the dust cup will automatically open the dust cup and recycle the garbage inside the dust cup. After the recycling is completed, you can also press the power button again to turn off the power of the base station.

## Deerma



**Auto-Empty No Hands Dirty**



**7 Tools & Soft Hose**

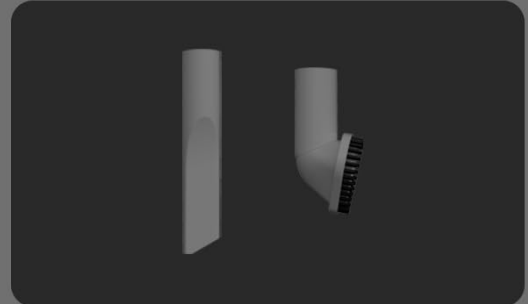


**590W Brushless Motor**

## Others



**Manual Clean Every Time**



**Few Tools**



**180W Motor**

*Image: The self-emptying process of the Deerma T50 Station, showing the vacuum docked and dust being transferred to the base station.*

When the base station is in a normal state, the indicator light shows green. When the dust bag is full, the indicator light shows red. When it is necessary to replace the cleaning base station, first turn off the base station, pull out the power plug, use both hands to hold on the both sides above the front cover assembly, gently pull them apart in the direction indicated by the arrow in the illustration, and then take out the front cover assembly upward. Pull out the old dust bag forcefully and throw it into the trash bin. Pull out the motor air inlet grid assembly forcefully, and then take out the filter cotton. Pinch the handle of the filter element at the bottom of the base station, rotate it clockwise, and pull out the filter element of the base station downward. Then take out the sound-absorbing cotton from the filter element.

*Refer to the video in the "Cleaning & Maintenance" section for visual guidance on automatic cleaning and dust bag replacement.*

### **Method 2: Manual Dust Cup Emptying**

Take out the extension hose and the floor brush head. Push the ash-dumping push rod forward above the trash bin. Open the bottom cover of the dust cup, pour the garbage in the dust cup into the trash bin, and then put the bottom cover of the dust cup back on.

*Refer to the video in the "Cleaning & Maintenance" section for visual guidance on manual dust cup emptying.*

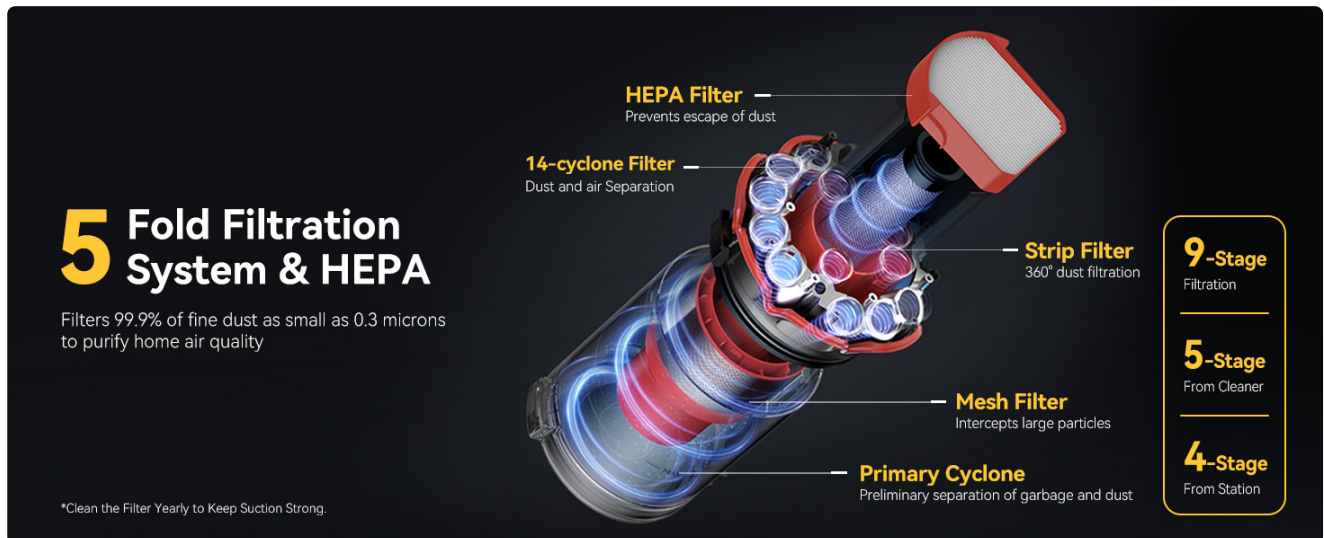
### **Method 3: Deep Cleaning of Dust Cup Components**

When you feel that the suction power is weakened, it is necessary to conduct a deep cleaning of the dust cup components.

1. Press the dust cup release button, and then lift the dust cup upward to take it out.
2. Pressing the release button on the bottom cover of the dust cup can also open the bottom cover of the dust cup.
3. Rotate the pre filter cotton counterclockwise to remove it.
4. Rotate counterclockwise to take out the cyclone tower. (Note: The 14-hole cyclone cone on the body of the machine cannot be disassembled. If there is garbage in the conical holes, it is necessary to use tools similar to chopsticks to clean them to avoid blocking the conical holes.)
5. Open the rear cover of the machine casing and take out the filter element.

**[Tip: Make sure all components are fully dried (avoid direct sunlight) before installation.]**

Clean the dust cup, front filter cotton, cyclone tower and filter element with tap water.



*Image: Separated and cleaned components of the dust cup and filter system, ready for reassembly.*

After cleaning, make sure to dry all the components thoroughly before reassembling them.

1. First, insert the filter element. Then put the rear cover of the machine casing back on.
2. Rotate the cyclone tower clockwise and install it.
3. Rotate the front filter cotton clockwise in the correct position and put it back.
4. Push the dust cup into the body of the machine according to the direction indicated by the arrow, the dust cup with the slot on the body of the machine. A "click" sound indicates that the installation is completed.

*Refer to the video in the "Cleaning & Maintenance" section for visual guidance on deep cleaning and reassembly.*

## 6.2 Cleaning the Roller Brush

[Note: It is not recommended to wash the roller brush with water.]

If you need to clean the roller brush, you can hold the handle position on the side cover of the roller brush with your fingers and rotate it downward, and then pull out the roller brush. Use scissors to clean the hair wound around the roller brush. Then put the roller brush back along. Then tighten the side cover of the brush.

*Refer to the video in the "Cleaning & Maintenance" section for visual guidance on cleaning the roller brush.*

## 6.3 Cleaning the Carpet Brush

If you need to clean the carpet brush, hold the handle position on the cover of the carpet brush with your fingers and rotate it downward, and then pull out the roller brush. Wipe it clean with a wet cloth, Place it in a dry place to dry, First, put the roller brush back in, Then press the side cover of the carpet brush upward.

*Refer to the video in the "Cleaning & Maintenance" section for visual guidance on cleaning the carpet brush.*

## 6.4 Cleaning the Hair Screw Tool

If you need to clean the hair screw tool, Press the release button of the hair screw tool, and then hold the handle position on the cover of the hair screw tool with your fingers and rotate it upward to take out the cover of the hair screw tool, Wipe the roller brush and the cover of the hair screw tool clean with a wet towel. Put the cover of the hair screw tool back along the roller brush until it is in place, and then press it downward.

Refer to the video in the "Cleaning & Maintenance" section for visual guidance on cleaning the hair screw tool.

## 7. TROUBLESHOOTING

If you encounter any issues with your Deerma T50 Station, please refer to the following common problems and solutions:

Problem	Possible Cause	Solution
Vacuum not turning on.	Battery not charged or not properly installed.	Ensure battery pack is fully charged and securely clicked into place.
Weak suction power.	Dust cup full, filters clogged, or brush head/hose blocked.	Empty dust cup. Clean all filters (pre-filter, cyclone tower, filter element). Check brush heads and extension hose for blockages.
Roller brush not spinning.	Hair or debris tangled around the roller brush.	Remove and clean the roller brush, removing any tangled hair or debris.
Base station indicator light is red.	Dust bag in the base station is full.	Replace the dust bag in the base station.
Vacuum stops unexpectedly.	Overheating due to prolonged use or blockages. Battery low.	Allow the vacuum to cool down. Check for and clear any blockages. Charge the battery.

## 8. SPECIFICATIONS

Feature	Detail
Brand	Deerma
Model Name	DEM-T50station-US
Special Feature	Cordless, Washable Filter, HEPA, Self Emptying, Anti-Tangle
Filter Type	Foam, HEPA Filter
Wattage	590 watts (Brushless Motor)

Feature	Detail
Runtime	Up to 90 minutes (Eco mode)
Capacity	0.4 Liters (Dust Cup)
Noise Level	84 dB
Product Dimensions	10.08"L x 11.02"W x 50.2"H
Item Weight	6.83 pounds
Power Modes	Eco, Standard, Boost, Turbo (4 modes)
Filtration System	5-Stage Filtration, HEPA & 14-Cyclone
Dust Bag Capacity (Base Station)	1.8 Liters

## 9. WARRANTY AND SUPPORT

---

For warranty information, technical support, or to purchase replacement parts, please visit the official Deerma website or contact their customer service. Keep your purchase receipt as proof of purchase.

Official Deerma Store: [Visit the Deerma Store on Amazon](#)