

## Manuals+

[Q & A](#) | [Deep Search](#) | [Upload](#)

manuals.plus /

› [VIVOSUN](#) /

› [VIVOSUN GrowCam C4 2K QHD WiFi Smart Camera User Manual](#)

## VIVOSUN C4

# VIVOSUN GrowCam C4 User Manual

2K QHD WiFi Smart Camera for Grow Tents & VGrow Smart Grow Boxes

## 1. INTRODUCTION

---

This manual provides detailed instructions for the setup, operation, maintenance, and troubleshooting of your VIVOSUN GrowCam C4. Please read this manual thoroughly before using the product to ensure proper functionality and safety.



Image 1.1: VIVOSUN GrowCam C4 Smart Camera. This image displays the compact, black VIVOSUN GrowCam C4 with its adjustable stand, designed for monitoring plant growth.

## 2. PACKAGE CONTENTS

Verify that all items listed below are present in your package:

- VIVOSUN GrowCam C4 Camera
- Power Cable (USB-C)
- Power Adapter (5V 1A)
- Camera Mount
- Screw Kit
- Position Sticker
- User Manual (this document)

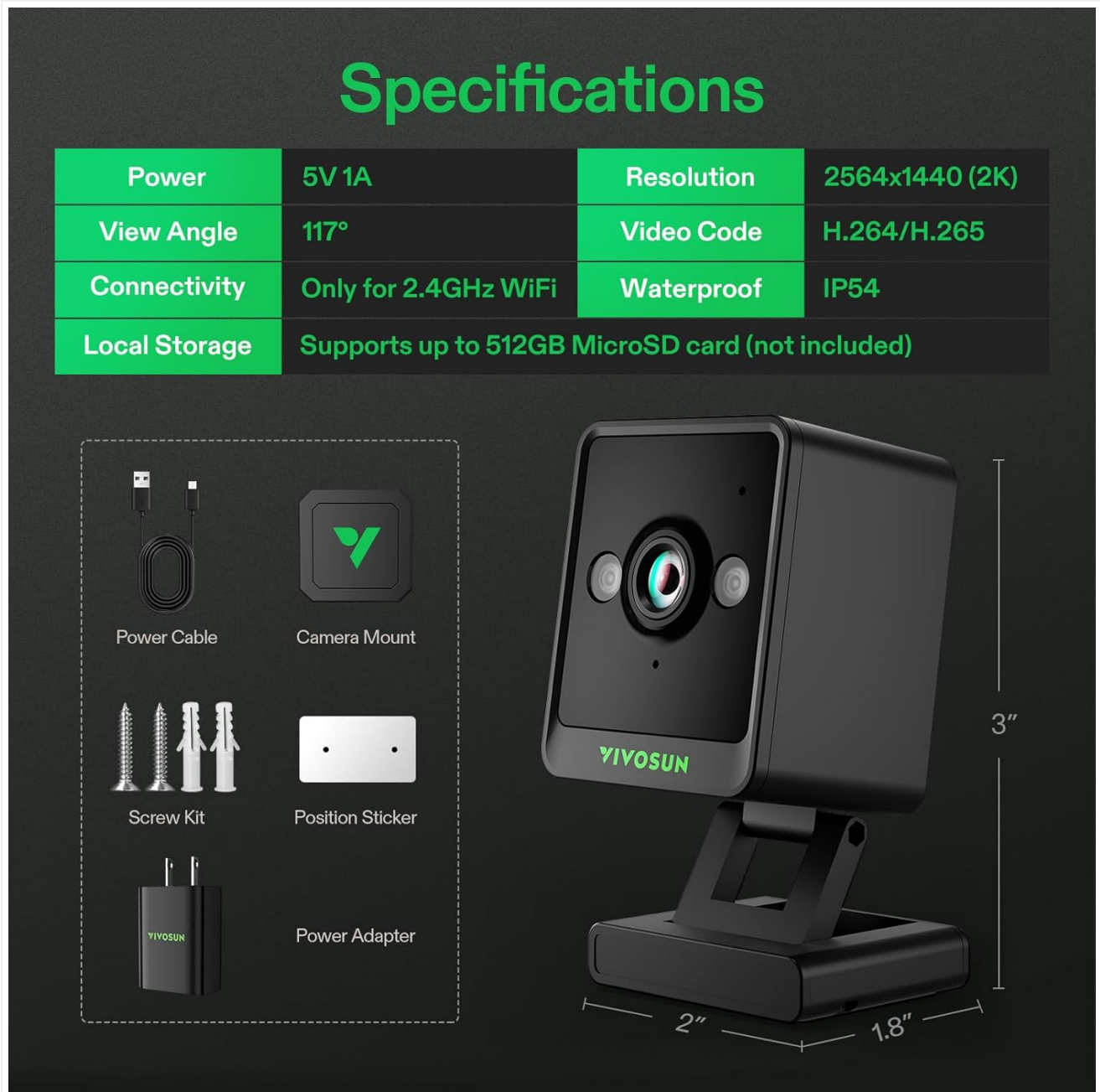


Image 2.1: Contents of the VIVOSUN GrowCam C4 package. This image illustrates the camera, power cable, power adapter, camera mount, screw kit, and position sticker included with the product.

### 3. SPECIFICATIONS

Feature	Detail
Power Input	5V 1A

Feature	Detail
Resolution	2564x1440 (2K QHD)
View Angle	117°
Video Code	H.264/H.265
Connectivity	2.4GHz Wi-Fi (Not compatible with 5GHz/6GHz)
Waterproof Rating	IP54
Local Storage	Supports up to 512GB MicroSD card (not included)
Controller Type	Android, iOS (VIVOSUN App)
Mounting Type	Wall Mount, Magnetic, Pole Clamp, Flat Surface
Item Weight	9.1 ounces (0.26 Kilograms)
Package Dimensions	4.21 x 3.78 x 2.52 inches
Special Feature	2-Way Audio, Night Vision, Timelapse
Indoor/Outdoor Usage	Indoor, Outdoor (protected from direct elements)

# Vivosun GrowCam C4



Image 3.1: Detailed specifications for the VIVOSUN GrowCam C4. This graphic presents key technical data such as power, resolution, view angle, connectivity, and storage capabilities.

## 4. SETUP

### 4.1 App Installation and Account Creation

1. Download the VIVOSUN App from your device's app store (iOS or Android).
2. Open the app and create a new account or log in with an existing one.

### 4.2 Device Pairing

Follow these steps to connect your GrowCam C4 to the VIVOSUN App:

1. Open the VIVOSUN App and navigate to the 'My Garden' section.
2. Tap the '+' icon to add a new device.
3. Select 'GrowCam C4' from the list of available devices.
4. Ensure your GrowCam C4 is powered on and in pairing mode. The indicator light should be flashing. If not, press and hold the reset button until it flashes.

5. Connect your mobile device to a 2.4GHz Wi-Fi network. The GrowCam C4 only supports 2.4GHz Wi-Fi (not 5GHz or 6GHz networks).
6. Enter your 2.4GHz Wi-Fi network password in the app.
7. The app will generate a QR code. Position your GrowCam C4 to scan this QR code from your phone screen.
8. Once the camera successfully scans the code, it will connect to your Wi-Fi network and pair with the app.



Image 4.1: Step-by-step guide for pairing the GrowCam C4 with the VIVOSUN App. This image illustrates the process from adding a device in the app to scanning the QR code for connection.

### 4.3 Mounting Options

The GrowCam C4 offers versatile mounting options to suit various environments:

- **Magnetic Mounting:** Utilize the magnetic base (included with VGrow systems) to attach the camera to metallic surfaces.
- **Pole Clamps:** Use the provided clamps to secure the camera to tent poles or similar structures.
- **Screw Mounting:** For permanent installation, use the screw kit to mount the camera to walls or other surfaces.
- **Flat Surface Placement:** The camera can be placed directly on any flat surface using its integrated stand.



Image 4.2: Various mounting methods for the VIVOSUN GrowCam C4. This image demonstrates magnetic mounting, clamping to poles, securing with screws, and placement on flat surfaces.

## 5. OPERATING INSTRUCTIONS

### 5.1 Live View and Monitoring

Once connected, you can access the live feed of your GrowCam C4 through the VIVOSUN App from anywhere with an internet connection.

- Open the VIVOSUN App and select your GrowCam C4 from the device list.
- The app will display a real-time 2K QHD video feed, allowing for detailed observation of your plants.
- The camera features a specially adjusted lens for grow setups, providing accurate color representation.
- Day/Night mode ensures clear recording 24/7. The camera automatically switches to night vision in low-light conditions without using white LEDs, preventing disturbance to plants.



Image 5.1: The VIVOSUN App interface displaying a live feed from the GrowCam C4. This image shows how users can monitor their plants remotely, with options for sound, microphone, snapshot, and recording.

## 5.2 Two-Way Audio

The GrowCam C4 includes a two-way audio feature:

- Tap the microphone icon in the app to speak through the camera's speaker.
- Listen to the environment around the camera through the app.

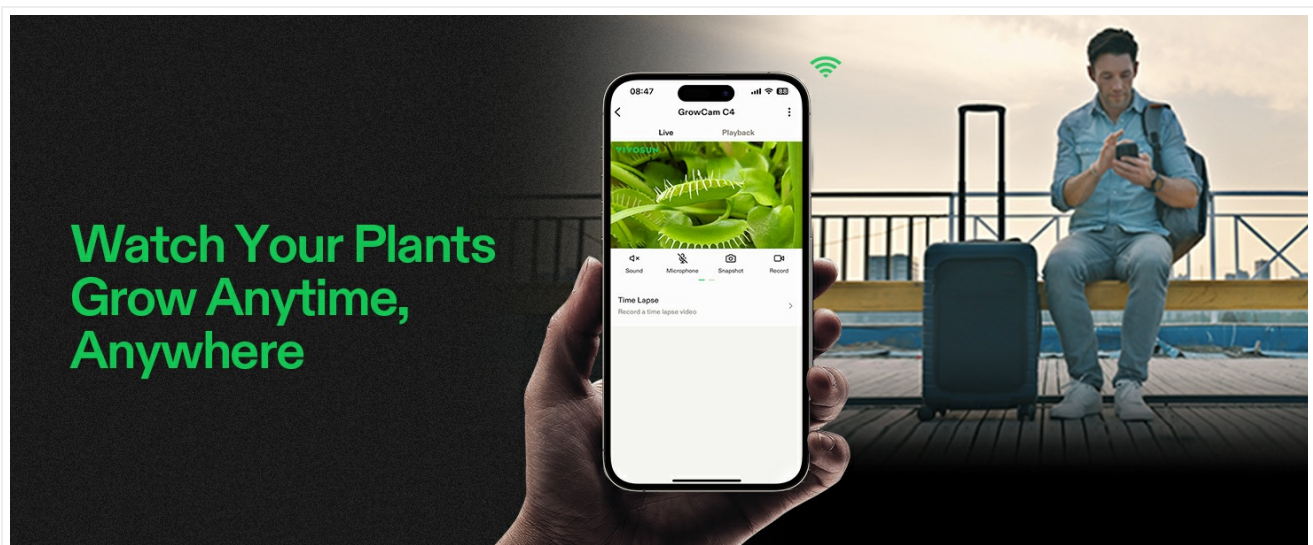


Image 5.2: Illustration of the two-way audio functionality of the GrowCam C4. This image depicts a user interacting with someone near the camera, demonstrating its communication capabilities.

## 5.3 Recording and Playback

The camera supports continuous recording and event-triggered recording:

- **MicroSD Card Storage:** Insert a MicroSD card (up to 512GB, not included) into the camera for local storage of footage. This enables continuous recording without a subscription.
- **Playback:** Access recorded footage directly through the VIVOSUN App.
- **App Alerts:** Receive instant notifications on your app for detected events, ensuring timely monitoring.

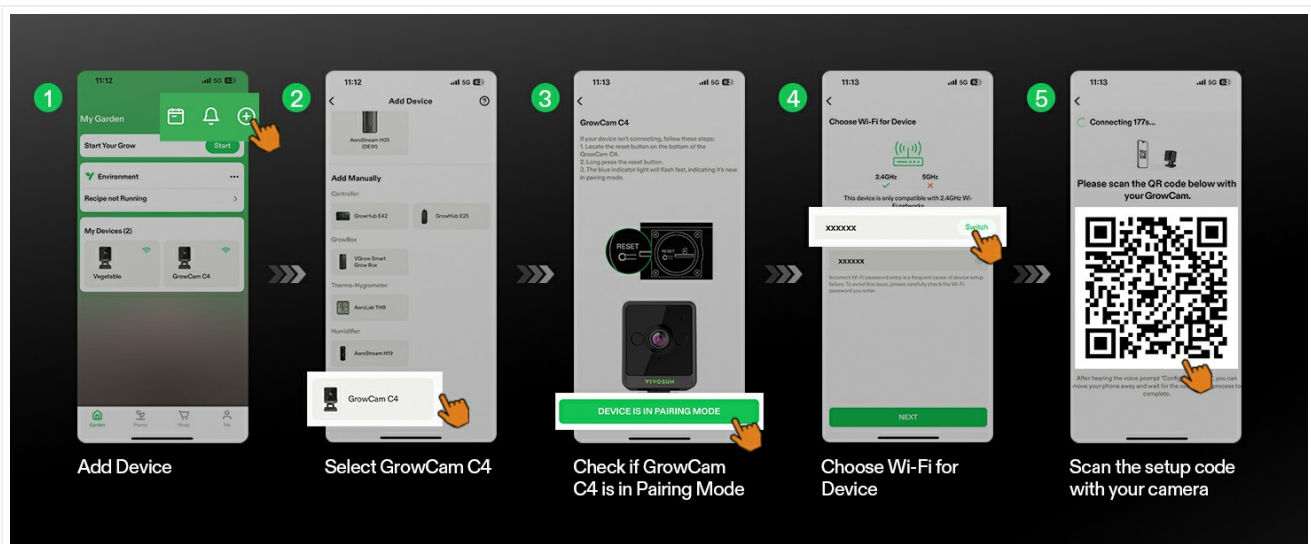


Image 5.3: The 24/7 recording capability of the GrowCam C4. This image shows the camera monitoring plants within a grow tent, with a smartphone displaying the continuous recording interface.

## 5.4 Timelapse Function

Capture the growth journey of your plants with the timelapse feature (requires a MicroSD card):

- Configure timelapse settings (intervals, duration) within the VIVOSUN App.
- The camera will compile a video showing your plants' development over time.
- Timelapse videos can be downloaded and shared.

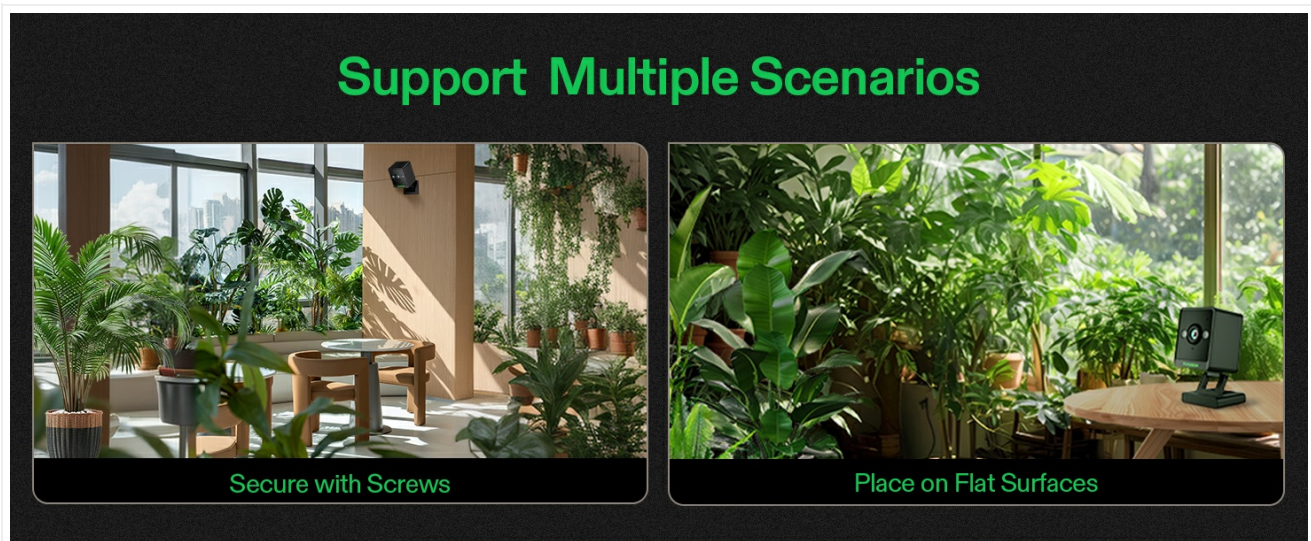


Image 5.4: The timelapse function of the VIVOSUN GrowCam C4. This image illustrates the camera capturing sequential images of plant growth, which are then compiled into a video.

## 6. MAINTENANCE

### 6.1 Cleaning the Camera

- Ensure the camera is powered off and unplugged before cleaning.
- Use a soft, dry cloth to wipe the camera body.
- For the lens, use a specialized lens cleaning cloth to avoid scratches. Do not use harsh chemicals or abrasive materials.

### 6.2 MicroSD Card Management

- Regularly check the storage status of your MicroSD card through the app.
- Format the MicroSD card periodically to maintain optimal performance and prevent data corruption. This can usually be done via the app settings.
- Replace the MicroSD card if it shows signs of degradation or error.

## 7. TROUBLESHOOTING

Problem	Possible Cause	Solution
Camera fails to connect to Wi-Fi.	Incorrect Wi-Fi band, wrong password, weak signal.	Ensure your router is broadcasting a 2.4GHz Wi-Fi signal. The camera does not support 5GHz or 6GHz networks. Verify the Wi-Fi password. Move the camera closer to the router or use a Wi-Fi extender.
Cannot view camera feed remotely (outside home network).	Internet connectivity issues, app configuration.	Ensure both your camera and mobile device have stable internet access. Check app permissions and settings for remote access. Restart the camera and router.
Camera falls from mounting position.	Improper installation, adhesive failure.	Re-secure the camera using the appropriate mounting method. For magnetic mounts, ensure the surface is clean and the adhesive is strong. Consider using screws for more permanent installations.
Camera disappears from app or cannot be re-added.	Device malfunction, app glitch, network change.	Try restarting the camera and the VIVOSUN App. Reset the camera to factory settings (refer to setup section) and attempt to re-pair. Ensure your network settings haven't changed.
Timelapse function not working.	No MicroSD card, card full or corrupted.	Insert a compatible MicroSD card. Check if the card has sufficient free space. Format the MicroSD card if necessary.
Poor image quality.	Dirty lens, insufficient lighting, network bandwidth.	Clean the camera lens. Ensure adequate lighting in the monitored area. Check your internet connection speed.

## 8. WARRANTY AND SUPPORT

### 8.1 Warranty Information

For specific warranty details regarding your VIVOSUN GrowCam C4, please refer to the warranty card included with your product or visit the official VIVOSUN website. Warranty terms may vary by region and retailer.

### 8.2 Customer Support

If you encounter any issues not covered in this manual or require further assistance, please contact VIVOSUN customer support through their official website or the VIVOSUN App. Provide your product model (C4) and a detailed description of the issue for efficient support.