

## EdenPURE A6030/B

# EdenPURE® Thunderstorm® III Air Purifier Instruction Manual

Model: A6030/B

## 1. INTRODUCTION

The EdenPURE® Thunderstorm® III Air Purifier is a compact, plug-in device designed to improve indoor air quality. It utilizes dual air purification technologies: activated oxygen (ozone) and ion-based plasma. This manual provides essential information for the safe and effective operation, maintenance, and troubleshooting of your air purifier. Please read this manual thoroughly before using the device and retain it for future reference.

## 2. IMPORTANT SAFETY INSTRUCTIONS

**WARNING: To reduce the risk of fire, electric shock, or injury, observe the following:**

- Read all instructions before using the appliance.
- Do not operate any appliance with a damaged cord or plug.
- Do not use outdoors or on wet surfaces.
- Unplug from outlet when not in use and before servicing.
- Use only as described in this manual.
- Keep hair, loose clothing, fingers, and all parts of body away from openings and moving parts.
- Do not handle plug or appliance with wet hands.
- Do not put any object into openings.
- Do not use with any opening blocked; keep free of dust, lint, hair, and anything that may reduce airflow.
- This appliance has a polarized plug (one blade is wider than the other). This plug will fit in a polarized outlet only one way. If the plug does not fit fully in the outlet, reverse the plug. If it still does not fit, contact a qualified electrician. Do not attempt to defeat this safety feature.
- Do not expose to water or moisture.
- Keep out of reach of children and pets.
- Ensure proper ventilation when using ozone settings. High ozone concentrations can irritate eyes and respiratory systems.

### 3. PRODUCT OVERVIEW

The EdenPURE® Thunderstorm® III Air Purifier is a compact, filter-free device designed for portable use in various environments such as homes, offices, cars, and RVs. It features a control knob for adjusting purification settings and indicator lights for active modes.



Figure 3.1: Front view of the EdenPURE Thunderstorm III Air Purifier, showing its compact design and how it plugs into a standard wall outlet.

# THUNDERSTORM

## Dual Cleaning Technologies



Destroys Air Pollutants



Revitalizes Air in your Home



Super-Clean with O<sub>3</sub> &  
Maintain with Plasma

**EdenPURE®**



Figure 3.2: Side view of the EdenPURE Thunderstorm III Air Purifier, illustrating its compact dimensions of 5.125 inches (height), 4.3 inches (width), and 2 inches (depth).

### 3.1 Key Features

- **Dual Air Purification Technology:** Combines activated oxygen (ozone) and ion-based plasma to address various airborne contaminants.
- **Filter-Free Design:** Eliminates the need for replacement filters, requiring only occasional cleaning.
- **Odor Neutralization:** Effectively reduces odors from pets, smoke, cooking, mold, mildew, and musty smells.
- **Compact and Portable:** Small footprint (5" x 4" x 2") and lightweight (1 pound) for easy placement and travel.
- **Whisper-Quiet Operation:** Operates at a low noise level of 34 dB.
- **USB Powered:** Includes an 8-foot USB power cord for versatile power options.

### 3.2 Package Contents

- EdenPURE® Thunderstorm® III Air Purifier Unit
- 8-foot USB Power Cord
- Instruction Manual (this document)

## 4. SETUP

---

### 4.1 Unpacking

Carefully remove the air purifier and all accessories from the packaging. Inspect the unit for any signs of damage. If any damage is found, do not use the device and contact customer support.

### 4.2 Placement

Place the air purifier in an area where air circulation is good and where it can effectively address the target odors or pollutants. For optimal performance, consider placing it:

- Near the source of odors (e.g., pet areas, kitchens, bathrooms).
- In a central location within the desired treatment area.
- Away from direct water sources or excessive humidity.
- On a stable surface or plugged directly into a wall outlet.

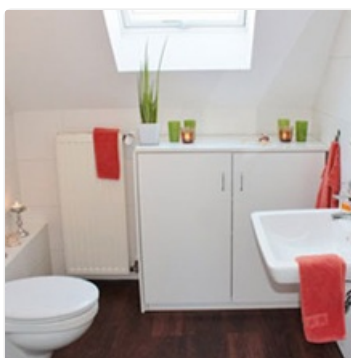


Figure 4.1: Ideal placement in a bathroom to neutralize odors.



Figure 4.2: Effective placement near pet areas to eliminate pet odors.

### 4.3 Power Connection

Connect the provided 8-foot USB power cord to the USB port on the air purifier. Plug the other end of the USB cable into a compatible USB power adapter (not included) or a powered USB port. The unit can be plugged directly into a wall outlet using a suitable adapter or placed on a flat surface.

## 5. OPERATING INSTRUCTIONS

---

The EdenPURE® Thunderstorm® III Air Purifier features a control knob to select between different purification modes: Ozone (O3) and Plasma. The indicator lights will illuminate to show the active mode and intensity.

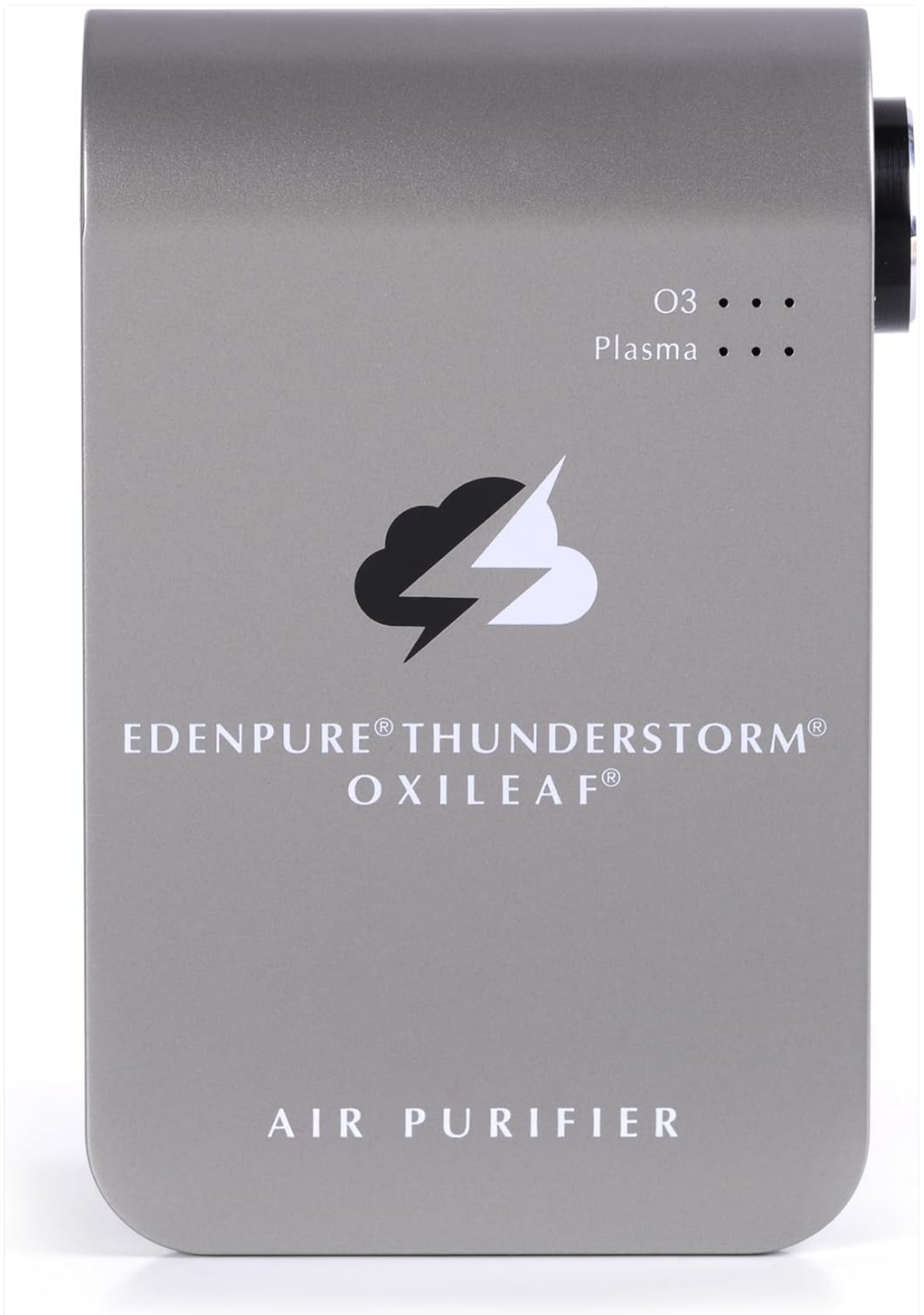


Figure 5.1: Detail of the control knob and O3/Plasma indicator lights.

## 5.1 Powering On/Off



To turn the unit on, rotate the control knob clockwise from the "OFF" position. To turn it off, rotate the knob counter-clockwise to the "OFF" position.

## 5.2 Selecting Purification Mode

The control knob allows you to select between Ozone (O3) and Plasma modes, each with varying intensity levels indicated by the number of illuminated dots.

- **Ozone (O3) Mode:** This mode generates activated oxygen to aggressively neutralize strong odors and pollutants. It is recommended for rapid odor elimination in unoccupied spaces or for short durations. The intensity can be adjusted.
- **Plasma Mode:** This mode generates ion-based plasma for continuous air purification, targeting airborne particles and maintaining air freshness. It is suitable for continuous use in occupied spaces. The intensity can be adjusted.

**CAUTION: When using the Ozone (O3) mode, especially at higher settings, ensure the area is well-ventilated and avoid prolonged exposure. High concentrations of ozone can be harmful to humans and pets. It is advisable to use this mode when the area is unoccupied and allow for ventilation before re-entry.**

## 5.3 Recommended Usage Scenarios

- **For Strong Odors (e.g., smoke, pet accidents, mold):** Use Ozone (O3) mode at a higher setting for 15-30 minutes in an unoccupied room. Ventilate the room thoroughly afterward.
- **For Continuous Air Freshness (e.g., general living areas, bedrooms):** Use Plasma mode at a low to medium setting. This mode is safe for continuous use in occupied spaces.
- **Travel/Car Use:** The compact size and USB power make it ideal for use in vehicles or during travel. Use Plasma mode for general air purification. For strong odors in a vehicle, use Ozone mode briefly with windows slightly open, then air out the vehicle.

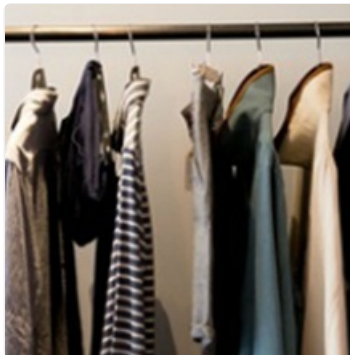


Figure 5.2: Use in closets or small spaces to freshen fabrics and remove musty smells.



Figure 5.3: Portable design makes it suitable for use in RVs and during travel.

Your browser does not support the video tag.

Video 5.1: A short preview video demonstrating the EdenPURE Thunderstorm III Air Purifier in use, highlighting its compact size and plug-in functionality. This video is provided by the seller and shows the product's basic operation.

## 6. MAINTENANCE

The EdenPURE® Thunderstorm® III Air Purifier is designed to be filter-free, minimizing maintenance. Regular cleaning will ensure optimal performance and longevity of the unit.

### 6.1 Cleaning the Unit

1. **Disconnect Power:** Always unplug the air purifier from the power source before cleaning.
2. **Wipe Exterior:** Use a soft, dry cloth to wipe down the exterior surface of the unit. Do not use abrasive cleaners, solvents, or harsh chemicals.
3. **Clean Air Intake/Outlet:** Periodically inspect the air intake vents (located on the sides) and the air outlet for dust and debris accumulation. Use a soft brush or a vacuum cleaner with a brush attachment to gently remove any dust or lint.
4. **Internal Cleaning (Advanced Users Only):** If significant dust accumulates inside the unit, it may be carefully opened by a qualified technician for cleaning. Do not attempt to disassemble the unit yourself unless specifically instructed by customer support.

**Frequency:** Clean the exterior and vents monthly, or more frequently if used in dusty environments or areas with high pet dander.

## 7. TROUBLESHOOTING

If you experience issues with your EdenPURE® Thunderstorm® III Air Purifier, please refer to the following troubleshooting guide. If the problem persists, contact customer support.

Problem	Possible Cause	Solution
Unit does not turn on.	No power supply. Power cord not properly connected. Outlet malfunction.	Ensure the unit is securely plugged into a working outlet. Check the USB cable connection to the unit and power adapter. Test the outlet with another device.
No noticeable air purification effect.	Incorrect mode selected. Room size too large for unit. Vents are blocked.	Ensure the desired mode (Ozone or Plasma) is selected and indicator lights are on. For larger areas, consider using the unit for longer durations or relocating it. Clean the air intake and outlet vents.
Unusual noise or smell.	Dust accumulation. Normal ozone smell (if in O3 mode). Internal component issue.	Clean the unit's vents. A slight "clean" or "after-storm" smell is normal in Ozone mode. If the smell is strong or burning, unplug immediately. If noise is excessive or smell is burning, unplug and contact customer support.
Indicator lights not working.	Unit not powered on. LED malfunction.	Ensure the unit is powered on and receiving electricity. If the unit is working but lights are off, contact customer support.

## 8. SPECIFICATIONS

Feature	Detail
Model Number	A6030/B

Feature	Detail
Product Dimensions (H x W x D)	5.13" x 4.3" x 2" (13.03 cm x 10.92 cm x 5.08 cm)
Weight	1 Pound (0.45 kg)
Power Consumption	4 watts
Noise Level	34 dB
Color	Gray
Certification	ETL Certified
First Available Date	July 2, 2024


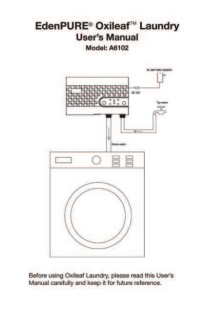

## 9. WARRANTY AND CUSTOMER SUPPORT

For warranty information, product support, or to purchase accessories, please contact EdenPURE® customer service. Refer to the product packaging or the official EdenPURE® website for the most current contact details.

**Legal Disclaimer:** Statements regarding dietary supplements have not been evaluated by the FDA and are not intended to diagnose, treat, cure, or prevent any disease or health condition. This product is an air purifier and not a dietary supplement.

© 2024 EdenPURE®. All rights reserved.  
EdenPURE® is a registered trademark.

### Related Documents - A6030/B

	<p><a href="#">EdenPURE Thunderstorm OxiLeaf Air Purifier User Manual</a></p> <p>This user manual provides comprehensive instructions for the EdenPURE Thunderstorm OxiLeaf Air Purifier. It covers safety information, installation, operation of O3 and Plasma technologies, sleep mode, applications, specifications, maintenance, and disposal. Learn how to achieve cleaner air in your home.</p>
	<p><a href="#">EdenPURE OxiLeaf A6102 Laundry System User Manual</a></p> <p>User's manual for the EdenPURE OxiLeaf A6102 Laundry System, detailing installation, operation, maintenance, and troubleshooting for ozone-based laundry treatment.</p>
	<p><a href="#">EdenPURE G9 Air Purifier Owner's Manual and Operating Guide</a></p> <p>Comprehensive owner's manual for the EdenPURE G9 Air Purifier, covering setup, operation, maintenance, troubleshooting, and warranty information.</p>





### [EdenPURE G9 Air Purifier Owner's Manual](#)

Comprehensive owner's manual for the EdenPURE G9 Air Purifier, detailing purification theory, components, installation, operation, display indicators, cleaning procedures, safety guidelines, and technical specifications.



### [Bio SpeedCLEAN VX200 Owner's Manual](#)

Owner's manual for the Bio SpeedCLEAN VX200 cordless vacuum cleaner, model A5969. Includes instructions on operation, assembly, cleaning, and troubleshooting.



### [Bio SpeedCLEAN VX300 Owner's Manual - Model A6072 | EdenPURE](#)

Owner's Manual for the EdenPURE Bio SpeedCLEAN VX300 cordless vacuum cleaner (Model A6072). Provides detailed instructions on operation, charging, maintenance, accessories, safety guidelines, and product specifications.