

## FlexSolar E20 Pro

# FlexSolar 20W Portable Solar Panel (Model E20 Pro) User Manual

Brand: FlexSolar | Model: E20 Pro

## 1. INTRODUCTION

This manual provides essential instructions for the safe and efficient use of your FlexSolar 20W Portable Solar Panel (Model E20 Pro). Designed for outdoor charging, this high-efficiency, foldable solar panel converts sunlight into electrical energy to power your devices. Please read this manual thoroughly before operation and retain it for future reference.



Image: The FlexSolar 20W Portable Solar Panel is designed for outdoor use, allowing users to harness solar power for their devices while hiking or camping.

## 2. PACKAGE CONTENTS

Verify that all items listed below are included in your package:

- 1x FlexSolar 20W Solar Panel Charger
- 2x Carabiners
- 1x User Manual



Image: The FlexSolar 20W Portable Solar Panel, shown with two phones charging, along with the included carabiners, representing the complete package.

## WHAT YOU GET



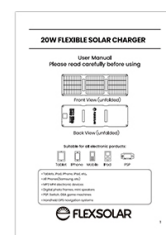
Packing Box



Foldable style



Carabiner x 2



User Manual

Image: Visual representation of the items included in the FlexSolar 20W solar panel package: the panel, two carabiners, and the user manual.

## 3. SAFETY INFORMATION

Observe the following safety precautions to prevent damage to the device or injury:

- Do not immerse the solar panel in water. While the panel surface is IP67 waterproof, the output ports are not.

- Avoid exposing the output ports to moisture or rain.
- Do not attempt to open, modify, or repair the device.
- Keep the panel away from fire or extreme heat sources.
- Ensure children do not play with the device.
- Use only compatible charging cables and devices.



## Superior Durability



Image: The FlexSolar panel's IP67 waterproof surface, demonstrating its resistance to water splashes and rain, though ports should remain dry.

## 4. SETUP

---

1. **Unfold the Panel:** Carefully unfold the FlexSolar panel completely to expose all solar cells.
2. **Position for Sunlight:** Place the unfolded panel in direct sunlight. For optimal performance, angle the panel directly towards the sun. Avoid shaded areas, as even partial shading can significantly reduce efficiency.
3. **Secure the Panel:** Use the integrated carabiner holes and included carabiners to secure the panel to a backpack, tent, or other stable surface, ensuring it remains facing the sun.
4. **Connect Your Device:** Locate the USB-A and USB-C output ports on the control box. Connect your device using a compatible USB cable.



# UPGRADED COMPACT AND LIGHTWEIGHT SOLAR PANEL

**WEIGHT**

**0.87LB**

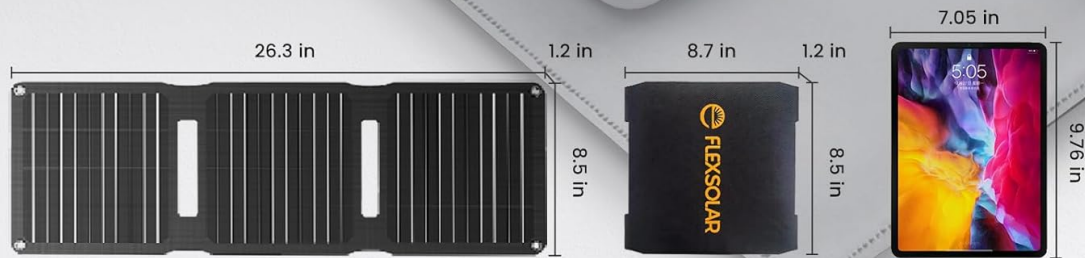


Image: The FlexSolar 20W solar panel in both folded and unfolded states, highlighting its compact dimensions and portability for easy transport.

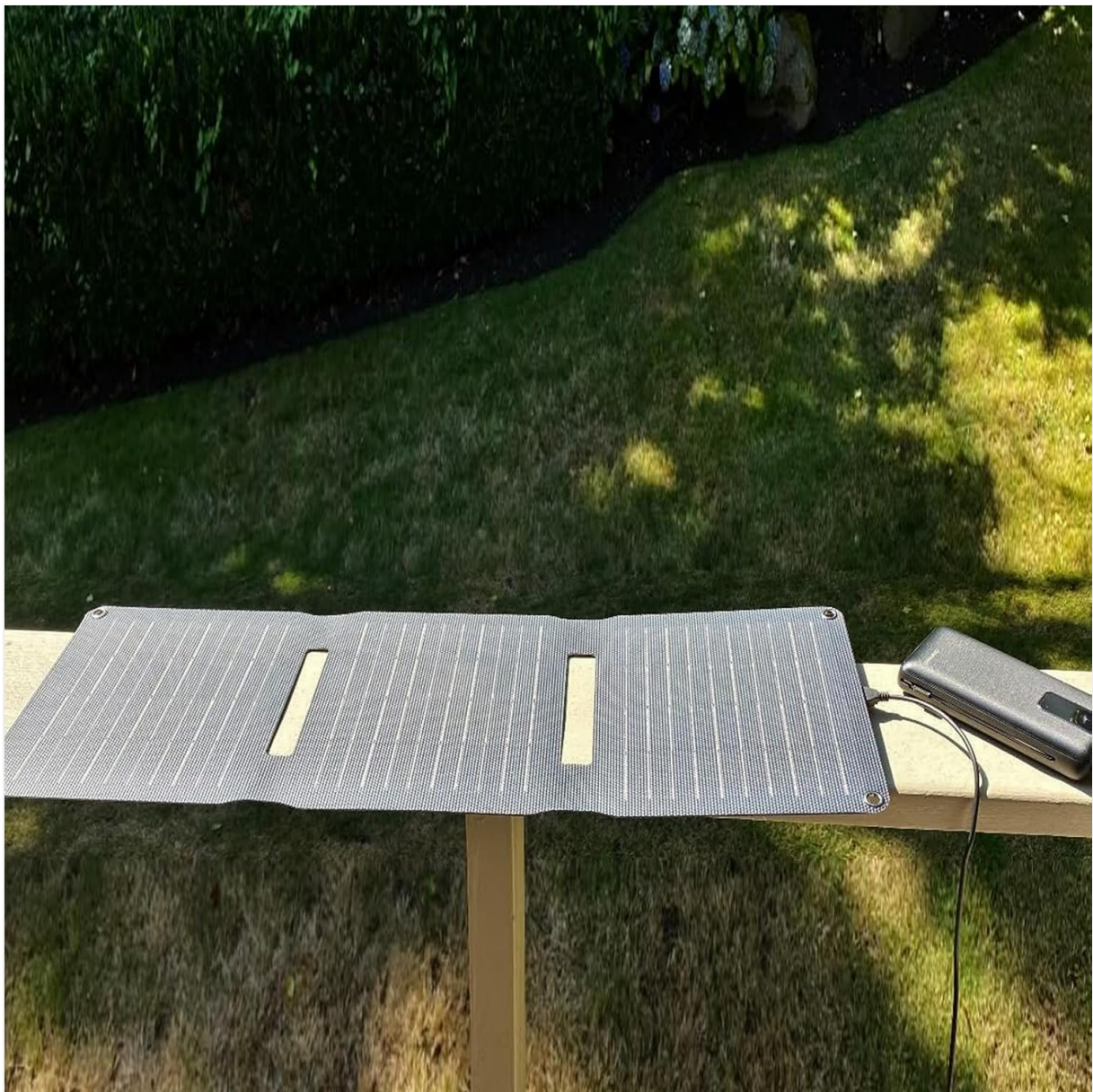


Image: The solar panel positioned on a railing, illustrating how to place it for maximum sun exposure to charge devices.

## 5. OPERATING INSTRUCTIONS

---

The FlexSolar 20W Portable Solar Panel converts sunlight directly into electricity. It does not store power internally, so devices must be connected while the panel is exposed to sunlight.

- **Charging Devices:** Once the panel is set up in direct sunlight, connect your smartphone, power bank, GPS, or other compatible USB device to either the USB-A (5V/3A Max) or USB-C (5V/3A Max) port.
- **Charging Indicator:** A red LED indicator on the control box will illuminate when the panel is receiving sufficient sunlight and generating power.
- **Optimal Performance:** The panel achieves up to 24% conversion efficiency in ideal conditions (clear, direct sunlight). Charging speed will vary based on sun intensity, cloud cover, and device power requirements.
- **Simultaneous Charging:** You can charge two devices simultaneously, but the total output will be shared between them.

Your browser does not support the video tag.

Video: An unboxing and overview of the FlexSolar 20W solar panel, demonstrating its two USB ports and how to unfold it.



## Charge 2 Devices with High Efficiency

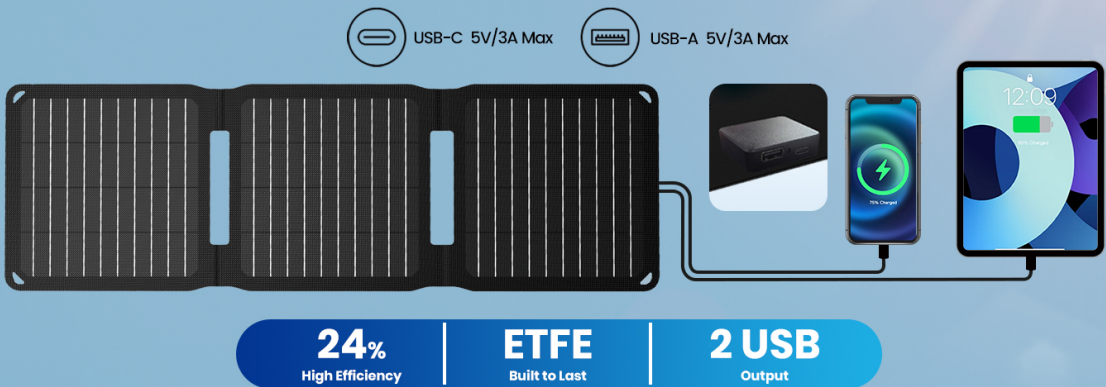


Image: The FlexSolar panel connected to a smartphone and a tablet, showcasing its ability to charge two devices at once with high efficiency.

## 20W FLEXSOLAR Solar Panel

### Charging Time

iphone 12 pro  
0.8-1.3 hrs

Galaxy S21  
1.1-1.8 hrs



USB output  
5V-3A·MAX



Type-c Output  
5V-3A·MAX



Image: Charging time estimates for popular smartphones (iPhone 12 Pro, Galaxy S21) using the 20W FlexSolar panel, detailing USB-A and USB-C output capabilities.

## 6. MAINTENANCE

- **Cleaning:** Regularly wipe the solar panel surface with a soft, damp cloth to remove dust, dirt, or

debris. A clean surface ensures maximum sunlight absorption. Do not use harsh chemicals or abrasive materials.

- **Storage:** When not in use, fold the solar panel and store it in a cool, dry place away from direct sunlight and extreme temperatures.
- **Inspection:** Periodically inspect the panel and cables for any signs of damage.

## 7. TROUBLESHOOTING

- **Device not charging:**
  - Ensure the panel is in direct, unobstructed sunlight.
  - Check all cable connections to ensure they are secure.
  - Verify that the red LED indicator on the control box is illuminated.
  - Test with a different USB cable or device to rule out cable/device issues.
- **Slow charging:**
  - Adjust the panel's angle to face the sun directly.
  - Clear any dust or debris from the solar panel surface.
  - Cloudy weather or low sun angle will naturally reduce charging speed.
  - Ensure your device is not drawing more power than the panel can supply (e.g., charging a large tablet while using it intensively).

## 8. SPECIFICATIONS

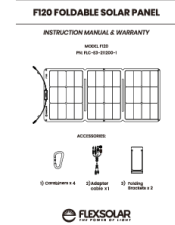
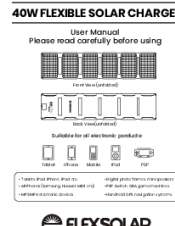


Feature	Detail
Brand	FlexSolar
Model Number	E20 Pro
Maximum Power	20 Watts
Material	ETFE
Conversion Efficiency	Up to 24%
Output Ports	1x USB-A (5V/3A Max), 1x USB-C (5V/3A Max)
Waterproof Rating	IP67 (panel surface)
Folded Size	8.7 × 8.5 × 1.2 inches
Unfolded Size	26.3 × 8.5 × 0.1 inches
Item Weight	0.86 lbs (396g)

## 9. WARRANTY AND SUPPORT

FlexSolar products are designed for reliability and performance. For specific warranty details, please refer to the warranty card included with your product or visit the official FlexSolar website. If you encounter any issues or have questions regarding your FlexSolar 20W Portable Solar Panel, please contact FlexSolar customer support for assistance.

For further information and support, please visit: [FlexSolar Store on Amazon](#)

## Related Documents - E20 Pro

	<p><a href="#">FLEXSOLAR F120 Foldable Solar Panel: Instruction Manual &amp; Warranty</a></p> <p>Comprehensive instruction manual and warranty details for the FLEXSOLAR F120 Foldable Solar Panel. Learn about safe operation, installation, specifications, maintenance, and product support.</p>
	<p><a href="#">FlexSolar 40W Flexible Solar Charger User Manual</a></p> <p>Comprehensive user manual for the FlexSolar 40W Flexible Solar Charger (Model E40). Includes specifications, operation instructions, maintenance guidelines, and warranty information. Suitable for charging various electronic devices.</p>
	<p><a href="#">FlexSolar 30W Flexible Solar Charger E30 - Efficient Outdoor Power</a></p> <p>Discover the FlexSolar 30W Flexible Solar Charger (E30, FLC-E4-200300-2), a lightweight and waterproof power solution for outdoor activities. Featuring high-efficiency monocrystalline solar cells (up to 24%), smart charging, and IP67 durability, it's ideal for camping and emergencies. Includes QC 3.0 and DC ports for charging multiple devices.</p>
	<p><a href="#">Ecosonique Portable Solar Panel Charger User Manual (E10, E20, E30)</a></p> <p>User manual for Ecosonique portable solar panel chargers (Models E10, E20, E30). Features include IP67 waterproofing, high-efficiency monocrystalline silicon cells, foldable design, and a detachable DC power hub with intelligent voltage regulation. Learn about specifications, usage, package contents, warnings, and troubleshooting.</p>