

7MAGIC TD-2301U

7MAGIC 7-in-1 Hair Styler & Hair Dryer Brush User Manual

Model: TD-2301U

<a href="#">Introduction</a>	<a href="#">Safety Information</a>	<a href="#">Package Contents</a>	<a href="#">Setup</a>	<a href="#">Operating Instructions</a>	<a href="#">Maintenance</a>
	<a href="#">Troubleshooting</a>	<a href="#">Specifications</a>		<a href="#">Warranty &amp; Support</a>	

1. INTRODUCTION

This manual provides detailed instructions for the safe and effective use of your 7MAGIC 7-in-1 Hair Styler & Hair Dryer Brush. Please read this manual thoroughly before first use and retain it for future reference.

The 7MAGIC 7-in-1 Hair Styler is a versatile hair styling tool designed for fast drying, curling, volumizing, and straightening. It features a high-speed brushless motor, negative ion technology, and smart temperature control for optimal hair health and styling results.

2. IMPORTANT SAFETY INFORMATION

**WARNING: To reduce the risk of burns, electrocution, fire, or injury to persons:**

- Keep out of reach of children.
- Do not use while bathing or near water.
- Allow the device to cool before storing.
- Use the heat-resistant glove provided when using the curling barrels.
- Do not use the device if the power cord or plug is damaged.
- Always unplug the device when not in use.
- Keep the device away from heated surfaces.
- In case of overheating, unplug the device and allow it to cool before using again.
- Always follow the instructions provided in this user manual for safe operation.
- This appliance has a polarized plug (one blade is wider than the other). As a safety feature, this plug will fit in a polarized outlet only one way. If the plug does not fit fully in the outlet, reverse the plug. If it still does not fit, contact a qualified electrician. Do not attempt to defeat this safety feature.
- The device includes an ALCI (Appliance Leakage Current Interrupter) safety plug for electric shock prevention. Test

the ALCI before each use by pressing the "TEST" button. The "RESET" button should pop up. Press "RESET" to resume operation. If the ALCI does not function correctly, do not use the appliance.

### 3. PACKAGE CONTENTS

---

Verify that all items are present and in good condition upon opening the package.

- 7MAGIC Main Body (Hair Styler Handle)
- 32mm Auto-Wrap Curler (Left)
- 32mm Auto-Wrap Curler (Right)
- Straightener Brush
- Oval Volumizer Brush
- High-Speed Hair Dryer Attachment
- Styling Concentrator Attachment
- Diffuser Attachment
- Travel Case
- Heat-resistant Glove
- Hairpins (2)
- User Manual (This document)



Figure 3.1: Complete 7MAGIC 7-in-1 Hair Styler Set with all attachments and travel case.

## 4. SETUP AND ASSEMBLY

Before using the hair styler, ensure it is properly assembled and connected to a suitable power source.

### 4.1 Attaching Styling Heads

1. Select the desired styling attachment (e.g., curling barrel, brush, dryer).
2. Align the arrows on the attachment with the arrows on the main body of the styler.
3. Insert the attachment into the main body and turn it to the right until it clicks securely into place.



Figure 4.1: Installation and Removal of Styling Attachments.

## 4.2 Removing Styling Heads

1. Ensure the device is unplugged and cool before attempting to remove attachments.
2. Press the styler lock button (usually indicated by a lock icon).
3. Turn the attachment to the left and gently pull it away from the main body to detach.

## 4.3 Power Connection

Plug the ALCI safety plug into a standard 120-volt electrical outlet. Ensure the ALCI is reset before use.

# 5. OPERATING INSTRUCTIONS

## 5.1 Controls Overview

### Diffuser Attachment of Hair Dryers

Designed to enhance the natural curls of the hair, the diffuser reduces frizz effectively with gentle and even airflow, maintaining the shape and elasticity of curls.



Figure 5.1: Control Panel and Settings.

- **Power Switch:** Turns the device ON/OFF.
- **Wind Speed Settings:** Three settings (Low, Mid, High) adjustable with up/down buttons.
- **Temperature Settings:** Four settings (Cold, Warm, Hot, Cold & Heat Cycles) adjustable with up/down buttons.
- **Automatic Mode Button:** Briefly press to activate 10 seconds of high-heat curling followed by 5 seconds of cool air blast. Press and hold to switch to continuous cool air mode.



## 5.2 General Usage Tips

- Ensure hair is towel-dried and detangled before styling.
- For best results, allow hair to reach approximately 80% dryness before using styling attachments.
- Always use the heat-resistant glove when handling hot attachments.
- Start with a lower heat setting and increase as needed, depending on your hair type and desired style.

## 5.3 Using the High-Speed Hair Dryer & Styling Concentrator

Attach the High-Speed Hair Dryer or Styling Concentrator. Select your desired wind speed and temperature. Direct the airflow to dry hair quickly and efficiently. The Styling Concentrator provides precise airflow for targeted drying and straightening.

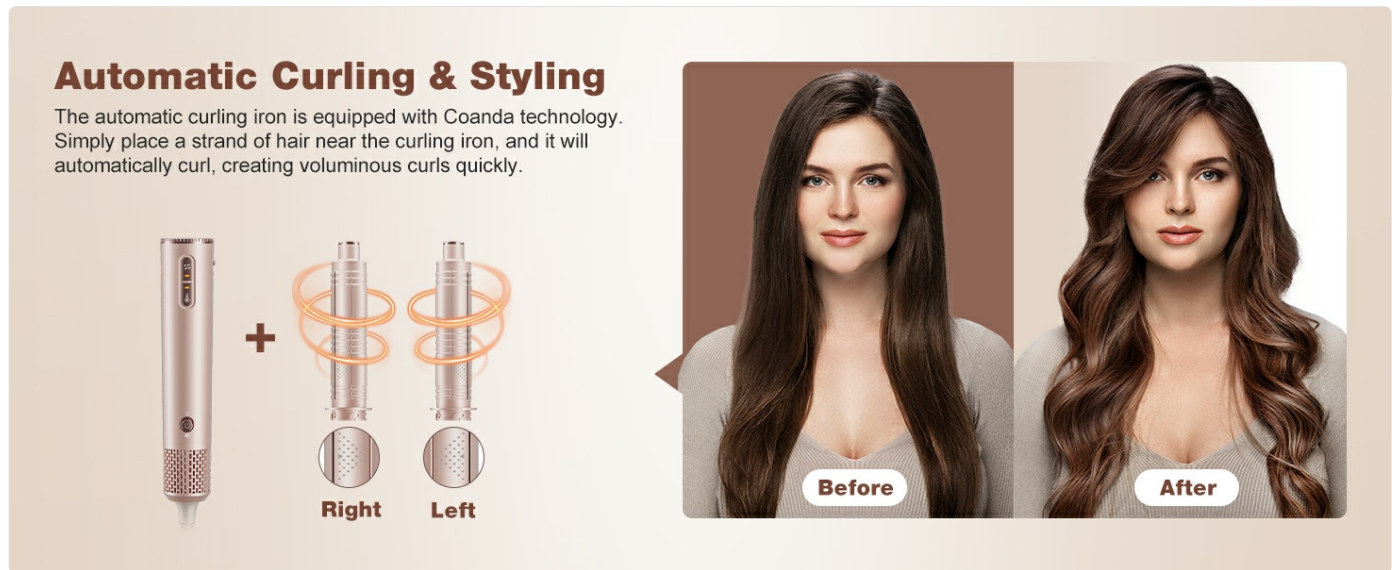


Figure 5.2: High-Speed Hair Dryer and Styling Concentrator in use.

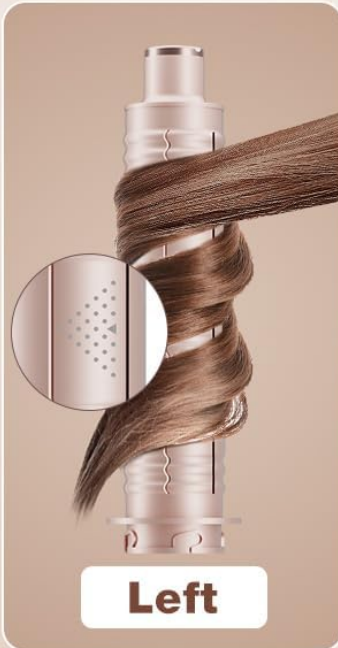
## 5.4 Using the 32mm Auto-Wrap Curlers

These curlers utilize the Coanda effect to automatically wrap hair. Use the Left curler for curls on the left side of your head and the Right curler for curls on the right side, or alternate for varied styles.

1. Ensure hair is damp, not wet, for best curling results.
2. Select the appropriate auto-wrap curler (Left or Right).
3. Hold a section of hair near the curling barrel. The Coanda effect will attract and wrap the hair around the barrel.
4. For automatic curling with cool air blast, briefly press the Auto Mode button. The device will heat for 10 seconds, then cool for 5 seconds.
5. Release the curl gently.

## Two 32mm Auto Airflow Curlers

Left / right automatic curling with Coanda technology  
for voluminous curls



Align hair ends with arrow

Figure 5.3: Auto-Wrap Curlers for Left and Right Curls.





Figure 5.4: Automatic Curling and Styling.

## 5.5 Using the Straightener Brush

The Straightener Brush combines a comb and flat iron function, utilizing negative ion technology to reduce frizz and static.

1. Ensure hair is dry before using the straightener brush.
2. Section your hair.
3. Slowly glide the brush through each section from root to tip.

### High-Speed Hair Dryer & Styling Concentrator

This high-speed hair dryer features a magnetic nozzle for precise airflow control. With 110,000 RPM and 28 m/s airflow, it cuts drying time by 50% and reduces heat damage compared to other dryers.



Figure 5.5: Straightener Brush in use.

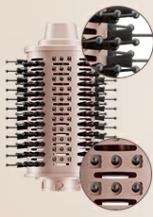
## 5.6 Using the Oval Volumizer Brush

This brush is designed to boost root volume and create smooth, healthy styles. It features nylon pins and tufted bristles for detangling and scalp massage.

1. Use on damp or dry hair.
2. For volume, place the brush close to the roots and lift upwards while drying.
3. For smoothing, glide the brush through hair sections.

## Oval-Shaped Curling Brush

Direct airflow to the roots for quick drying. Effortlessly create voluminous styles, leaving hair dry, smooth, and sleek.



### Short Tufted Bristles

Boost root volume  
Tangle-free

### Nylon Pin Bristles

Massage the scalp  
Scald-proof



Figure 5.6: Oval Volumizer Brush in use.

## 5.7 Using the Diffuser Attachment

The diffuser is ideal for enhancing natural curls and waves, reducing frizz with gentle, even airflow.

1. Attach the diffuser to the main body.
2. Place sections of damp, curly hair into the diffuser bowl.
3. Gently lift the diffuser towards the scalp, allowing the air to dry and define curls without disturbing their pattern.

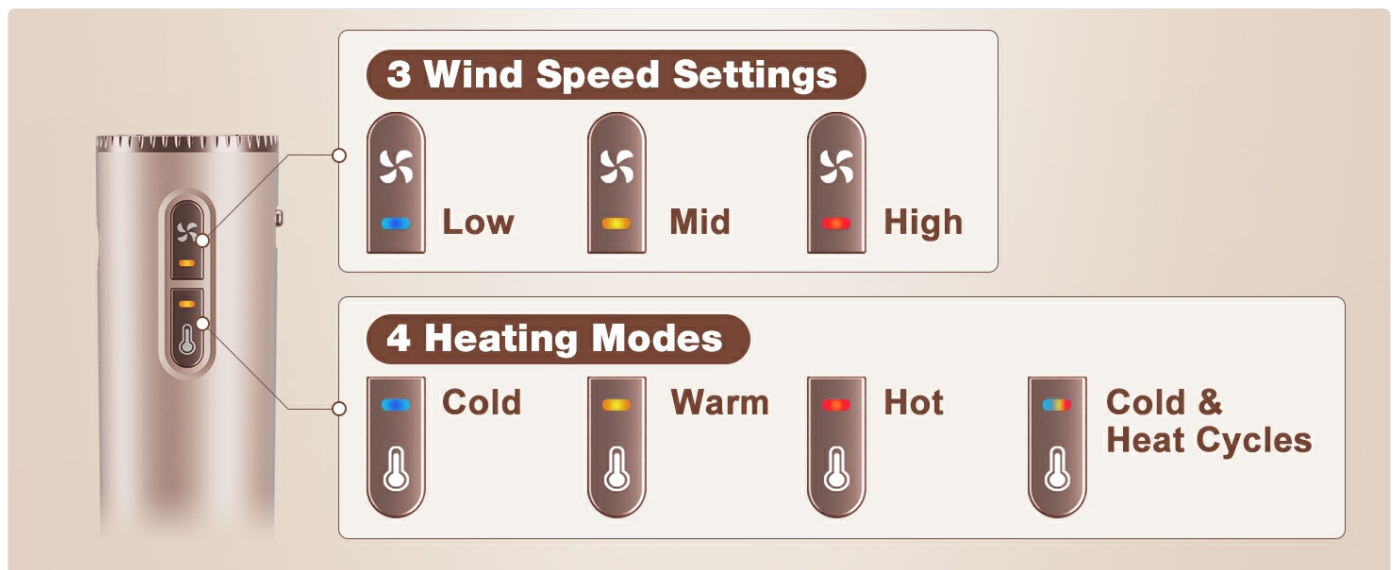


Figure 5.7: Diffuser Attachment in use.

## 5.8 Negative Ion Technology

The 7MAGIC styler releases negative ions during operation. These ions help to neutralize static electricity, reduce frizz, and leave hair smoother and shinier.



# 200 Million Negative Ions

Effectively tames static frizz, enhances shine, and creates voluminous styles

↑  
**+50%**  
Smoother

↑  
**+40%**  
Shinier

↓  
**-90%**  
Less Frizz

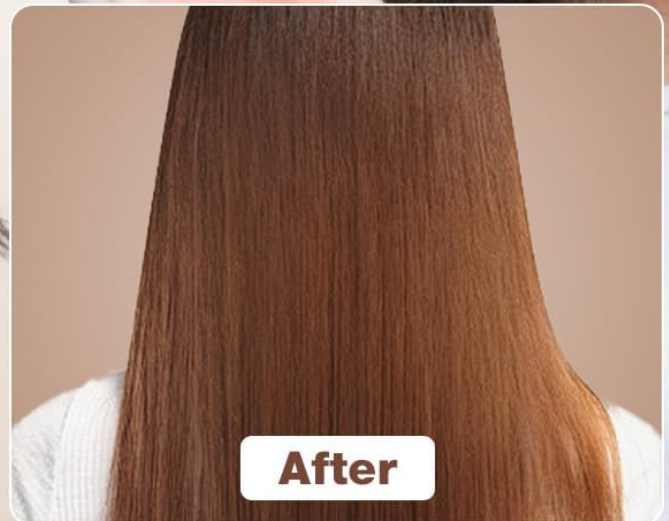
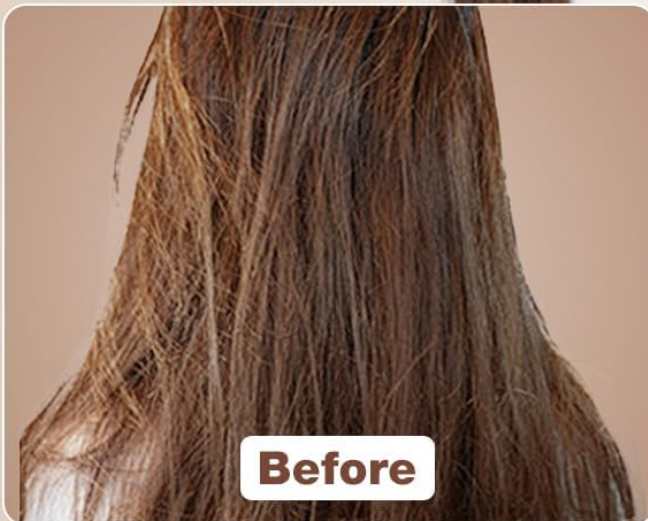


Figure 5.8: Benefits of Negative Ion Technology.

## 6. CARE AND MAINTENANCE

Proper care and maintenance will extend the life of your 7MAGIC Hair Styler.

### 6.1 Cleaning the Device

- Always unplug the device and allow it to cool completely before cleaning.
- Wipe the main body and attachments with a soft, damp cloth. Do not use abrasive cleaners or solvents.
- Remove any hair tangled in the brushes or attachments regularly.

6.2 Cleaning the Air Inlet Filter

The air inlet filter should be cleaned regularly to maintain optimal performance and prevent overheating.

1. Ensure the device is unplugged and cool.
2. Locate the air inlet filter at the bottom of the main body.
3. Gently twist and pull to remove the filter cover.
4. Clean any accumulated dust or hair from the filter using a soft brush or cloth.
5. Reattach the filter cover by aligning and twisting until secure.

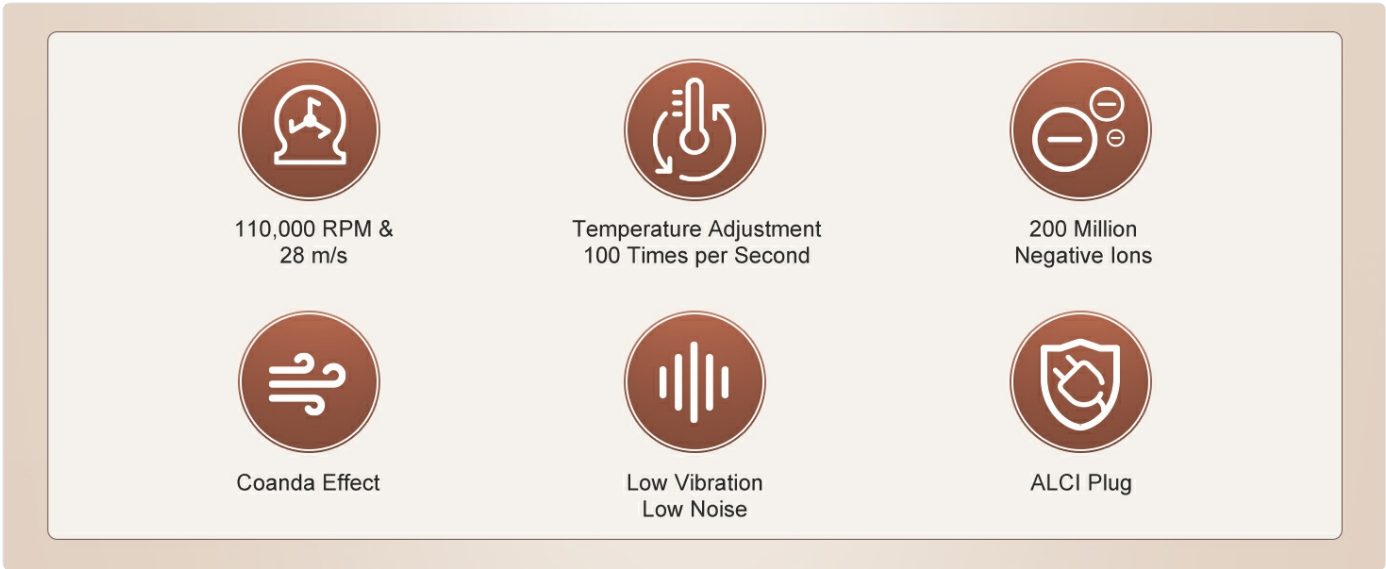


Figure 6.1: Features for Durability and Maintenance (Swivel Cord, Magnetic Suction, Air Inlet).

6.3 Storage

- Store the device and its attachments in the provided travel case when not in use.
- Ensure the device is completely cool and dry before storing.
- Do not wrap the power cord tightly around the device, as this can damage the cord.
- Store in a cool, dry place, away from direct sunlight and moisture.

7. TROUBLESHOOTING

If you encounter any issues with your 7MAGIC Hair Styler, refer to the following table for common problems and solutions.

Problem	Possible Cause	Solution
Device does not turn on.	Not plugged in; ALCI tripped; Power outlet issue; Device malfunction.	Ensure plug is fully inserted. Press "RESET" on the ALCI plug. Test the outlet with another appliance. Contact customer support if issue persists.
No airflow or weak airflow.	Air inlet filter blocked; Attachment not securely installed.	Clean the air inlet filter (refer to Section 6.2). Ensure attachment is clicked into place.

Problem	Possible Cause	Solution
Device overheats and shuts off.	Air inlet filter blocked; Prolonged use; Internal safety mechanism activated.	Unplug and allow to cool for at least 15 minutes. Clean the air inlet filter. Reduce usage time.
Curling barrels not wrapping hair effectively.	Hair too wet or too dry; Section too large; Incorrect barrel direction.	Ensure hair is damp (80% dry). Use smaller sections. Verify you are using the correct Left/Right barrel for the side of the head.
Hair not smooth or still frizzy after styling.	Incorrect temperature setting; Hair not fully dry; Product buildup on brush.	Adjust temperature. Ensure hair is dry before straightening. Clean brush attachments.

If the problem persists after attempting these solutions, please contact 7MAGIC customer support.

## 8. PRODUCT SPECIFICATIONS

Feature	Detail
Model Number	TD-2301U
Rated Voltage	120 Volts
Rated Wattage	1400 Watts
Motor Speed	Up to 110,000 RPM
Airflow Speed	28 m/s
Temperature Control	Smart chip, adjusts 1000 times/second, max 176°F (80°C)
Negative Ion Output	200 Million
Product Dimensions	1.8 x 1.8 x 9 inches
Product Weight	1 Pound
Cord Length	360° Swivel Cord
Safety Features	ALCI Safety Plug, NTC Feedback System, Bimetallic Thermal Switch, Non-resettable Fuse, Overheating Protection
Material	Aluminum, Metal, Nylon
Color	Pink

## 9. WARRANTY AND SUPPORT

### 9.1 Warranty Information

7MAGIC is committed to providing a 100% satisfactory shopping experience and offers a quality commitment for its



products. Specific warranty duration details are typically provided with your purchase documentation or can be obtained by contacting customer support.

This warranty covers defects in materials and workmanship under normal use. It does not cover damage resulting from misuse, accident, alteration, unauthorized repair, or failure to follow instructions.

## 9.2 Customer Support

For technical assistance, troubleshooting, or warranty claims, please contact 7MAGIC customer support. Please have your model number (TD-2301U) and purchase information ready when contacting support.

You can visit the official 7MAGIC store on Amazon for more information and contact options:[7MAGIC Amazon Store](#)

