

HARFO DA2H-SN

Harfo Fingerprint Smart Door Lock Instruction Manual

Model: DA2H-SN | Brand: HARFO

1. INTRODUCTION

This manual provides detailed instructions for the installation, operation, and maintenance of your Harfo Fingerprint Smart Door Lock. This advanced keyless entry system offers multiple access methods, including fingerprint, passcode, IC card, and smartphone app control, designed to enhance the security and convenience of your home. Please read this manual thoroughly before installation and use to ensure proper function and safety.

2. PRODUCT OVERVIEW AND FEATURES

The Harfo Smart Door Lock is an all-in-one solution for modern home security, integrating various technologies for flexible and secure access.

- **Multiple Access Methods:** Unlock using fingerprints, the dedicated mobile app, custom passcodes, IC cards, or traditional physical keys.
- **Biometric Fingerprint Access:** Instant and secure entry with a quick fingerprint scan, eliminating the need for keys. Supports up to 50 unique fingerprints.
- **App Management:** Generate and share one-time, permanent, scheduled, or recurring access codes. Manage user access rights and review access logs directly from your smartphone.
- **Keypad Entry:** Digital electronic touchscreen keypad supports up to 250 passcodes. Features anti-peeping password input for enhanced security.
- **IC Card Access:** Supports up to 1000 IC cards for convenient tap-to-unlock functionality (3 cards included).
- **Auto-Lock & One-Touch Locking:** Configure automatic locking between 5 to 900 seconds. Activate one-touch locking by pressing '#' on the keypad for 2 seconds.
- **Enhanced Security Features:** Includes privacy mode, passage mode, silent mode, anti-wrong password lockout, and an emergency power port for temporary power supply.
- **Remote & Voice Control (Gateway Required):** When paired with a Harfo Gateway (sold separately), remotely control the lock via the app and integrate with Amazon Alexa or Google Assistant for voice commands. Receive real-time notifications and monitor lock status.

Secure Smart Fingerprint Door Lock

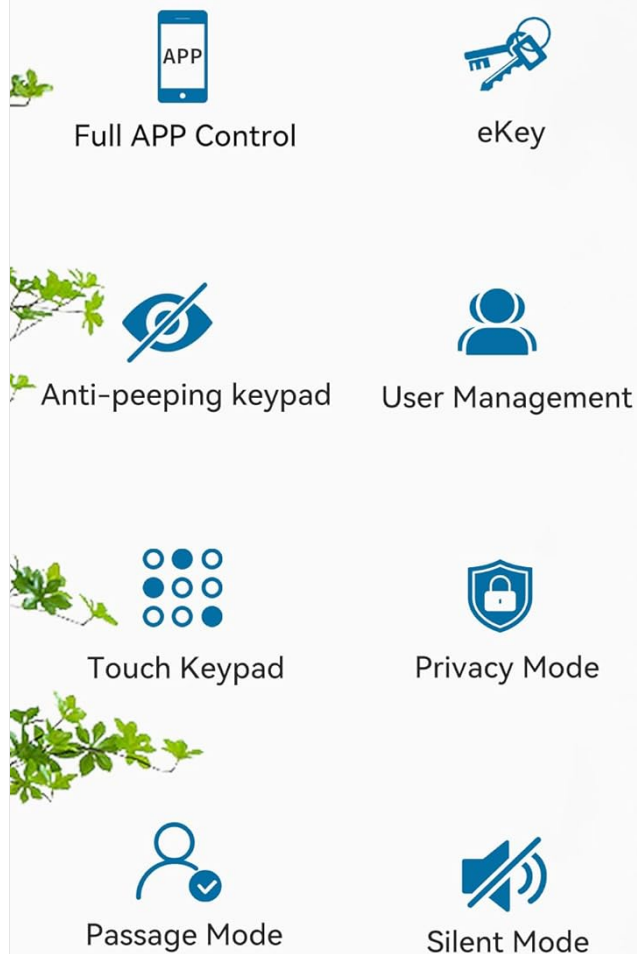


Figure 2.1: Secure Smart Fingerprint Door Lock Features

3. WHAT'S INCLUDED

Please verify that all components are present before beginning installation:

- APP Control Smart Deadbolt Lock Assembly
- Door Handlesets
- 3 x IC Fobs
- 2 x Physical Keys
- User Manual (this document)
- Screw Accessories Kit



Figure 3.1: Included Components

4. SPECIFICATIONS

Attribute	Detail
Brand	HARFO
Model Name	DA2
Item Model Number	DA2H-SN
Color	Satin Nickel
Material	Zinc
Lock Type	Biometric, Combination Lock, Deadbolt, Keypad
Special Features	Anti-Peeping Password, Fingerprint, Fob Unlock, Passcode Unlock, Touchscreen

Attribute	Detail
Item Dimensions (L x W x H)	4 x 14 x 11 inches
Item Weight	4.55 pounds
Connectivity Protocol	Bluetooth
Control Method	App, Remote, Touch, Voice
Controller Type	Amazon Alexa, Google Assistant (with separate gateway)
Batteries Required	Yes (4x 1.5V AA dry batteries, not included)
Recommended Uses	Airbnb, Rental, Vacation House, Front Door, Side Door, Back Door, Garage Door, New Home, Apartment

5. SETUP AND INSTALLATION

The Harfo Smart Door Lock is designed for easy installation on most standard doors. Please ensure your door meets the following requirements:

- **Door Thickness:** 1.38 inches to 1.97 inches (35mm-50mm) thick.
- **Door Hole:** Suitable for 2-1/8 inches (5.4cm) door holes.
- **Door Type:** Works with standard wooden, left-handed, and right-handed doors.

Battery Requirements: The lock requires 4x 1.5V AA dry batteries (not included). Rechargeable batteries are not recommended as most have a voltage of 1.2V, which may affect performance.

Installation Steps (Overview):

1. Prepare the door by ensuring it meets the specified dimensions and hole requirements.
2. Install the latch and strike plate into the door frame.
3. Mount the exterior assembly of the lock.
4. Install the interior assembly and connect the necessary cables.
5. Secure all components with the provided screws.
6. Insert the 4x AA dry batteries into the battery compartment.
7. Test the lock's basic functionality (e.g., manual locking/unlocking).

For detailed, step-by-step installation instructions, please refer to the included user manual booklet or the official Harfo installation video resources.

Fits on Most Standard Doors

✓ Left-Handed Door

✓ Right-Handed Door

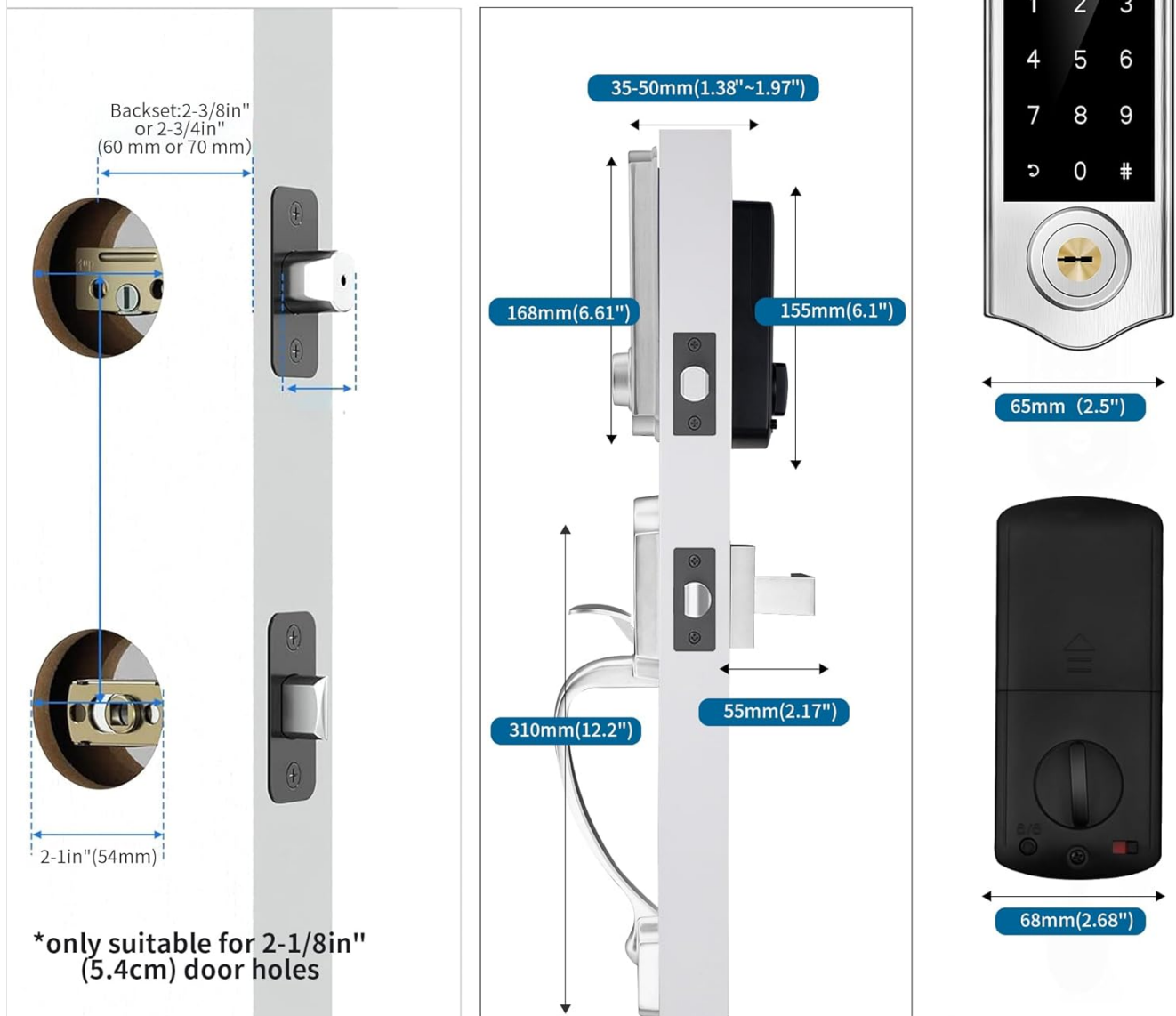


Figure 5.1: Door Compatibility and Dimensions

6. OPERATING INSTRUCTIONS

6.1 Unlocking Methods

- **Fingerprint:** Place your registered finger on the fingerprint sensor for instant unlocking. The lock supports up to 50 unique fingerprints.
- **Passcode:** Enter your registered passcode on the touchscreen keypad, followed by the '#' key. The lock supports up to 250 passcodes.
- **IC Card:** Tap a registered IC card against the designated area on the lock to unlock. The lock supports up to 1000 IC cards (3 included).
- **Physical Key:** In case of emergency or battery depletion, use the provided physical key to manually unlock the deadbolt.
- **Mobile App:** Use the Harfo mobile application to remotely unlock the door (requires Harfo Gateway, sold separately).



Figure 6.1: Multiple Access Methods

Safety & Solid Privacy Protection

50+
Fingerprints

250+
Passcodes

1000+
IC Crads(3 include)

2 Physical Keys



Figure 6.2: Access Capacity

6.2 Locking Methods

- **Auto-Lock:** The lock can be configured to automatically lock after a set period (5 to 900 seconds) once unlocked.
- **One-Touch Locking:** From the outside, press and hold the '#' key on the keypad for 2 seconds to engage the deadbolt.
- **Manual Locking:** From the inside, turn the thumb-turn to lock the door.

Auto-lock & One-touch Locking

Press # button for 2 seconds to lock



Figure 6.3: Auto-Lock and One-Touch Locking

6.3 Special Modes

- **Privacy Mode:** When activated, only the administrator's code or physical keys can unlock the door from the outside, preventing other registered users from entering.
- **Passage Mode:** Keeps the lock in an unlocked status, allowing free entry and exit without requiring credentials. Ideal for high-traffic periods.
- **Silent Mode:** Disables all sound prompts from the lock, useful for maintaining quiet environments.

7. APP MANAGEMENT

The Harfo Smart Door Lock integrates with a mobile application (e.g., VV SmartLock app) for comprehensive management of your lock's features.

- **User Management:** Add, modify, or delete user fingerprints, passcodes, and IC cards.
- **Code Generation:** Create various types of passcodes: one-time, permanent, scheduled (time-limited), and recurring.
- **Access Logs:** View a detailed history of who entered and when, providing an audit trail for your door.

- **Remote Control:** Lock or unlock your door from anywhere (requires Harfo Gateway, sold separately).
- **Notifications:** Receive real-time push notifications on your smartphone regarding lock activity.

8. REMOTE AND VOICE CONTROL

To enable remote control and voice assistant integration, the Harfo Gateway (sold separately) is required. This gateway connects your smart lock to your home Wi-Fi network.

- **Remote Access:** Once connected to the gateway, you can lock or unlock your door from anywhere using the mobile app, monitor its status, and receive alerts.
- **Voice Control:** Integrate your lock with Amazon Alexa or Google Assistant. Use voice commands to lock or unlock your door (e.g., "Alexa, lock my front door").



Voice Control & Remotely Control

Work with Alexa

Work with Goggle Assistant

Alexa, lock my room door

Ok, locking the room door

Pair the lock with a gateway (sold separately) will enable you voice control & remotely control the lock



Figure 8.1: Voice and Remote Control Setup

9. MAINTENANCE

Regular maintenance ensures the longevity and optimal performance of your Harfo Smart Door Lock.

- **Battery Replacement:** Replace the 4x AA dry batteries when the low battery indicator appears or when the lock's response time slows. Do not mix old and new batteries.
- **Cleaning:** Wipe the keypad and fingerprint sensor with a soft, dry cloth. Avoid using abrasive cleaners or solvents that could damage the finish or electronic components.
- **Mechanical Check:** Periodically check that all screws are tight and that the handle and deadbolt operate smoothly without obstruction.
- **Software Updates:** Keep your mobile app updated to the latest version to ensure compatibility and access to new features or security enhancements.

10. TROUBLESHOOTING

If you encounter issues with your Harfo Smart Door Lock, refer to the following common problems and solutions:







Problem	Possible Cause	Solution
Lock does not respond to input (keypad, fingerprint, fob)	Low or dead batteries. Incorrect input.	Replace all 4 AA dry batteries. Ensure correct passcode/fingerprint/fob is used.
Fingerprint not recognized	Dirty sensor. Finger not placed correctly. Unregistered fingerprint.	Clean the fingerprint sensor with a soft cloth. Ensure full contact of the finger. Re-register fingerprint if necessary.
Connectivity issues with app or voice assistant	Harfo Gateway not connected or out of range. Bluetooth issue.	Ensure the Harfo Gateway is powered on and within range of the lock and Wi-Fi. Check Bluetooth connection on your phone. Restart the app.
Lockout due to incorrect attempts	Too many incorrect passcode/fingerprint attempts.	The lock will temporarily disable after 5 incorrect attempts. Wait for the lockout period to expire or use a physical key.
Auto-lock not functioning	Auto-lock feature is disabled or set to a long delay.	Check the auto-lock settings in the mobile app and adjust the delay time as needed.

If the problem persists after attempting these solutions, please contact HARFO customer support for further assistance.

11. WARRANTY AND SUPPORT

HARFO is committed to providing high-quality products and excellent customer service. While specific warranty details are not provided in this manual, HARFO offers responsive support for its products.

For any questions, technical assistance, or warranty claims, please contact HARFO customer support through the contact information provided on the product packaging or the official HARFO website. When contacting support, please have your product model number (DA2H-SN) and purchase details ready.

 <p>HARFO® HL20 series USER MANUAL</p>	<p>HARFO HL20 Series Smart Door Lock User Manual: Installation, Features, and Operation</p> <p>Comprehensive user manual for the HARFO HL20 series smart door lock, covering installation, fingerprint and password management, unlocking methods, alarm warnings, and after-sales service.</p>
 <p>Welcome to myQ. Let's get you started.</p>	<p>Yale LiftMaster Smart Lock & myQ Module: Quick Start Guide</p> <p>Get started with your Yale LiftMaster Smart Lock and myQ Network Module. This guide covers installation, app setup, and troubleshooting for seamless smart home integration.</p>
 <p>HARFO® HL10 series USER MANUAL</p>	<p>HARFO HL10 Series User Manual</p> <p>User manual for the HARFO HL10 series door lock, providing instructions on installation, operation, and troubleshooting. Includes technical specifications and after-sales service information.</p>
 <p>Alfred DB2S Programming Instructions</p>	<p>Alfred DB2S Programming Instructions and User Guide</p> <p>Comprehensive programming instructions and user guide for the Alfred DB2S smart lock, covering setup, operations, settings, and troubleshooting.</p>
 <p>MAXPRO INTRUSION INBRAAKCENTRALES</p>	<p>Honeywell MAXPRO Intrusion: Cloud-gehoste Inbraakdetectie en Toegangscontrole Centrales</p> <p>Ontdek de Honeywell MAXPRO Intrusion centrales, een volledig geïntegreerde, cloud-gehoste oplossing voor inbraakdetectie en toegangscontrole. Beheer uw beveiligingssystemen eenvoudig via de MAXPRO Cloud, ideaal voor kleine tot middelgrote bedrijven.</p>
 <p>V-PLEX-BEWEGINGSMELDERS</p>	<p>Honeywell V-Plex Bewegingsmelders: Geavanceerde PIR en Dual Tec Sensoren</p> <p>Ontdek de Honeywell V-Plex PIR en Dual Tec bewegingsmelders, ontworpen voor eenvoudige installatie, superieure detectie en minimale valse alarmen. Compatibel met Honeywell centrales, deze sensoren bieden geavanceerde technologie voor betrouwbare beveiliging.</p>