

## Manuals+

[Q & A](#) | [Deep Search](#) | [Upload](#)

manuals.plus /

› [Terviiix](#) /

› [Terviiix 4-in-1 Hot Air Rotating Blow Dryer Brush Kit Instruction Manual](#)

## Terviiix FA318-Black

# Terviiix 4-in-1 Hot Air Rotating Blow Dryer Brush Kit Instruction Manual

Model: FA318-Black

Brand: Terviiix

### IMPORTANT SAFETY INFORMATION

Keep the product away from water. Use caution when styling to prevent burns.

The Terviiix Hair Dryer Brush is designed for use with 125V voltage and is not compatible with countries that use 200-250V. Do not take it abroad to avoid potential compatibility issues.

Before starting your styling session, thoroughly detangle your hair with a wide-tooth comb to minimize tangles and snags. In case of any unexpected issues, promptly switch off the styler and gently untangle your hair.

Equipped with an ALCI safety plug, the Terviiix Hot Air Blowdryer Brush instantly cuts power in the event of water contact, providing an extra layer of protection and ensuring safe operation.

### PRODUCT OVERVIEW

The Terviiix 4-in-1 Hot Air Rotating Blow Dryer Brush Kit offers versatile hair styling with its interchangeable attachments and advanced technology.

#### Included Attachments:

- 2" Rotating Volumizing Brush
- 1.25" Rotating Volumizing Brush
- 3" Non-Rotating Oval Volumizing Brush
- Diffuser Attachment

These attachments allow for various voluminous looks, from large waves to defined curls.



Figure 1: The Terviiix 4-in-1 Hot Air Rotating Blow Dryer Brush Kit showing the main unit and its four interchangeable attachments: two rotating brushes, one oval volumizer, and a diffuser.

## SETUP AND ASSEMBLY

To attach any of the interchangeable accessories, align the white bar on the attachment with the unlock symbol on the main unit. Gently push the attachment onto the unit and twist it clockwise until it locks into place, aligning the white bar with the lock symbol. Ensure the attachment is securely fastened before use.

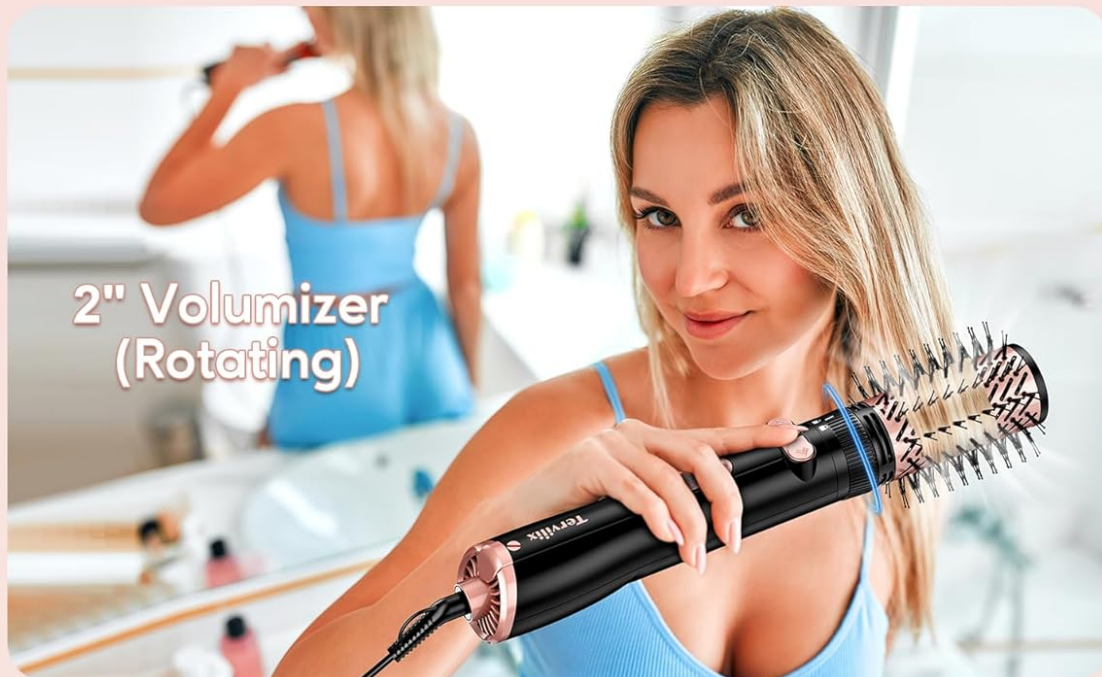


Figure 2: A user demonstrating the attachment of the 2-inch rotating volumizing brush to the main unit.

## OPERATING INSTRUCTIONS

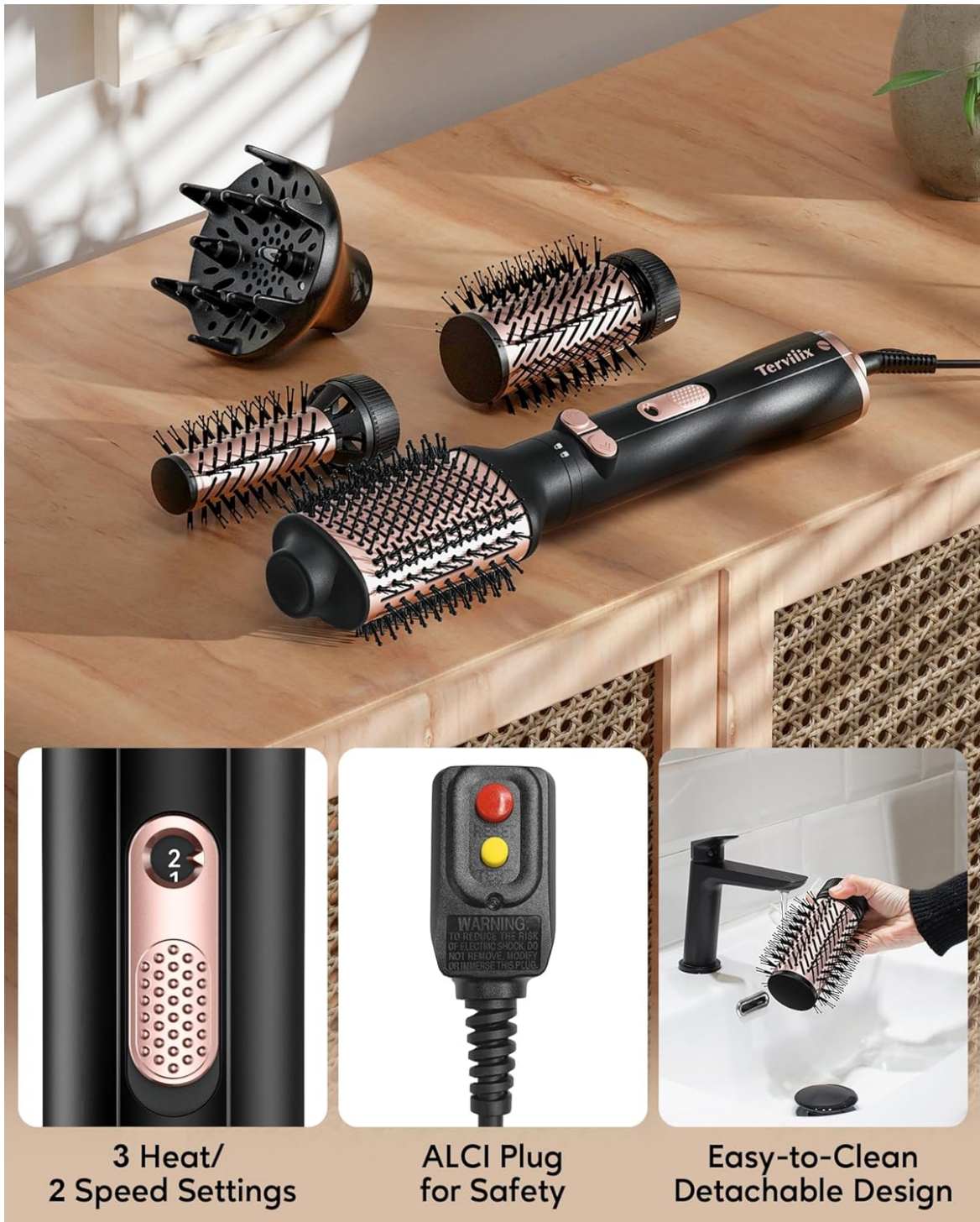
### Power and Settings

The Terviix Hot Air Rotating Blow Dryer Brush features customizable heat and speed settings for optimal styling.

- **Three Heat Settings:** Hot (high), Warm (low), and Cool Soft Air.
- **Two Speed Settings:** Adjust airflow intensity.

The cool soft air setting is ideal for setting your style. For first-time users, it is recommended to begin

with the cool setting to practice technique and prevent hair tangling.



**3 Heat/  
2 Speed Settings**

**ALCI Plug  
for Safety**

**Easy-to-Clean  
Detachable Design**

Figure 3: Detailed view of the control panel with heat and speed settings, the ALCI safety plug, and the easy-to-clean detachable brush design.

### Using the Rotating Brushes

The rotating attachments (2" and 1.25" volumizing brushes) rotate up to 360° and support rotation in two directions. This allows for easy volume and shape creation with one hand, reducing arm fatigue.

Two large buttons on the handle control the rotation: one for clockwise rotation and one for counter-clockwise rotation.

Your browser does not support the video tag.

Video 1: Demonstration of the Terviiix blow dryer brush's versatility and ease of use, showcasing the rotating brush functionality.

The brush grips hair effectively, making styling easier. It may take a few uses to become accustomed to styling with the rotation buttons.

### Using the Non-Rotating Attachments

The 3" non-rotating oval volumizing brush and the diffuser attachment are used for specific styling needs without rotation.



Figure 4: A user styling hair with the 3-inch non-rotating oval volumizing brush for added volume and smoothness.

# 360° Auto-Rotating Air

Achieve your desired look in half the time

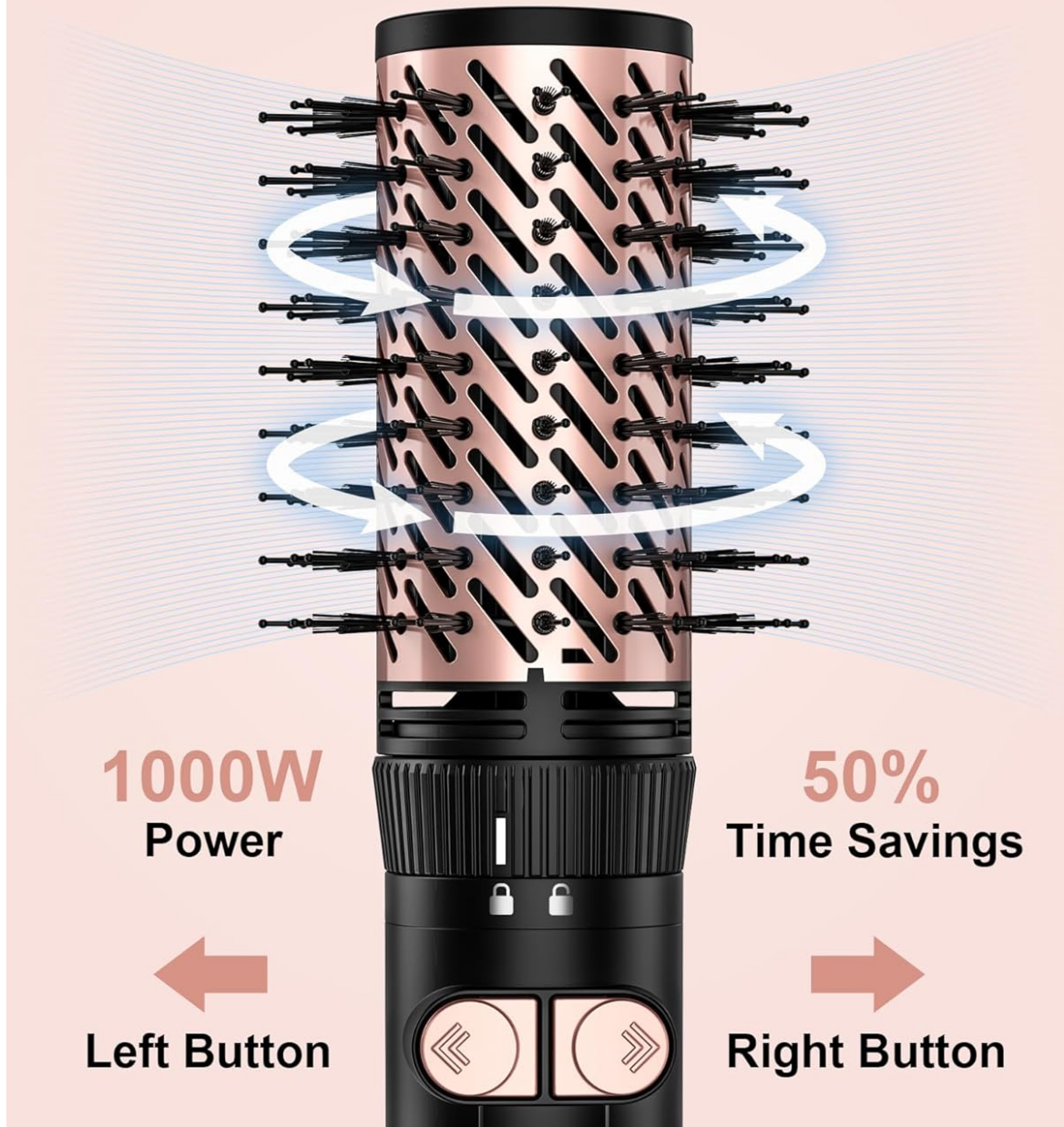


Figure 5: A user utilizing the volumizer diffuser attachment, ideal for enhancing natural curls and reducing frizz.

## Styling Tips

1. **Prep and Set:** Wash and towel-dry your hair until damp. Apply heat protectant and detangle with a wide-tooth comb. Choose your attachment and securely attach it. Start with a lower heat setting for control, then increase as needed.
2. **Create Volume:** Use the rotating volumizing brush at the roots to lift and curl. Work in sections, styling from roots to ends until fully dry and smooth. For a bent or curled end, gently pull the brush toward the ends while rotating.
3. **Cool Down:** Finish with the cool shot to lock in your style, allowing hair to cool fully before touching.



Figure 6: Visual guide illustrating the recommended steps for preparing hair, creating volume, and cooling down after styling.

## MAINTENANCE AND CARE

The brush heads are designed without electrical components, allowing for easy detachment and cleaning after each use. This ensures hygiene and longevity of your styling tools.

# Dual Bristle Design with AKT Ceramic Barrel



Pinned Bristles



Tufted Bristles

Figure 7: A detachable brush head being cleaned under running water, highlighting the ease of maintenance.

## TROUBLESHOOTING

### Common Issues and Solutions

Problem	Possible Cause	Solution
Brush not rotating or inconsistent rotation	Hair tangled in bristles; incorrect attachment; motor issue.	Ensure hair is detangled before use. Re-attach brush head securely. If issue persists, contact customer support.

Problem	Possible Cause	Solution
Unit suddenly stops working or smells like burning plastic	Internal short circuit; overheating; damaged cord.	Immediately unplug the unit. Do not use if burning smell or short circuit occurs. Contact customer support for assistance.
Difficulty holding or maneuvering the handle	Hand size or grip preference.	The ergonomic handle is designed for comfort, including for those with arthritis. Practice with the cool setting to improve handling.
Hair tangling during styling	Insufficient detangling; large hair sections; incorrect technique.	Always thoroughly detangle hair before use. Work with smaller sections. Practice technique, especially with rotating brushes.

## SPECIFICATIONS

<b>Product Dimensions</b>	3.15 x 3.94 x 13.78 inches; 2.6 Pounds
<b>Item Model Number</b>	FA318-Black
<b>Manufacturer</b>	Terviiix
<b>ASIN</b>	B0D8BCQJTT
<b>Country of Origin</b>	China
<b>Brand</b>	Terviiix
<b>Color</b>	Black
<b>Material</b>	Plastic
<b>Wattage</b>	1000 watts
<b>Power Source</b>	Corded Electric
<b>Voltage</b>	125 volts (US standard)

## WARRANTY AND SUPPORT

Specific warranty details for the Terviiix 4-in-1 Hot Air Rotating Blow Dryer Brush Kit are not provided in this manual. Please refer to the product packaging, the manufacturer's official website, or your point of purchase for comprehensive warranty information.

For technical support, troubleshooting assistance, or any inquiries regarding your product, please contact Terviiix customer service.

You can often find contact information on the product packaging or by visiting the official Terviiix store page on Amazon: [Terviiix Store](#).

