



[Manuals.plus](#) /

> [Acquaer](#) /

> Acquaer Shallow Well Jet Pump (Model CCJC) Instruction Manual

Acquaer CCJC

Acquaer Shallow Well Jet Pump Instruction Manual

Model: CCJC

1. INTRODUCTION AND OVERVIEW

This manual provides essential information for the safe and efficient operation, installation, and maintenance of your Acquaer Shallow Well Jet Pump, Model CCJC. This pump is designed for wells up to 25 feet deep and is suitable for various applications including irrigation systems, sprinkler setups, gardens, and supplying water to homes or small farms.

The Acquaer Shallow Well Jet Pump features a durable cast iron volute, a dual voltage motor (115V/230V), automatic thermal overload protection, and an automatic pressure switch to ensure consistent water pressure.



Acquaer Shallow Well Jet Pump with performance metrics: Max 1130 GPH at 40 PSI, suitable for well depths up to 25 feet.

2. PRODUCT FEATURES

- **Powerful Suction:** Equipped with a 3/4HP electric motor, this pump delivers strong suction power and ample water flow, ideal for wells up to 25 feet deep. It can also serve as an irrigation or sprinkler pump.
- **Dual Voltage Motor:** The heavy-duty motor operates safely on both 115V and 230V. The unit is factory-set for 230V. Its design ensures high efficiency and energy saving even under high-intensity use, making it suitable for fresh water supply to gardens, lawns, and farms.
- **Overheat Protection:** A built-in automatic thermal overload protector prevents the motor from overheating and potential damage. The pump automatically shuts off if water runs out or the motor temperature becomes excessive.
- **Automatic Pressure Switch:** Functions as a pressure booster, activating the pump when pressure drops below 20 PSI and deactivating it when pressure exceeds 40 PSI. This maintains consistent water pressure for household use. A pressure gauge is included on the casing.
- **Durable Cast Iron Volute:** Constructed with exquisite craftsmanship and a rugged cast iron casing for durability and high performance.

Acquaer™

Shallow Well Jet Pump

- Strong Flow
- Thermal Overload Protection
- Dual Voltage
- Well Depth Up to 25ft



Key features of the Acquaer Shallow Well Jet Pump.

3. SETUP AND INSTALLATION

Proper setup is crucial for the optimal performance and longevity of your Acquaer Shallow Well Jet Pump. Ensure all connections are secure and leak-free.

3.1 Component Identification

PRODUCT DETAILS



Detailed view of the Acquaer Shallow Well Jet Pump highlighting key components: Priming Port, 1-inch NPT Outlet, Voltage Box, and Power Box.

- **Priming Port:** Used to fill the pump with water before initial operation.
- **1-1/4" NPT Inlet:** Connection point for the suction line from the well.
- **1" NPT Outlet:** Connection point for the discharge line to the water system.
- **Voltage Box:** Contains the electrical connections and voltage selection switch.
- **Power Box:** Houses the motor's electrical components.
- **Pressure Gauge:** Displays the current water pressure.

3.2 Voltage Selection

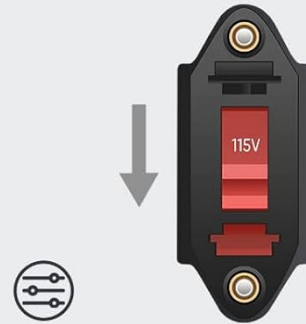
The pump is factory-set to 230V. If your power supply is 115V, you must adjust the voltage switch before first use. Failure to do so can damage the pump.

DUAL VOLTAGE

Factory Preset at 230V



Switch Down for 115V



Switch Up for 230V



CAUTION: Please Select the Correct Voltage for the First Time Using.

Illustration of the dual voltage switch on the Acquaer Shallow Well Jet Pump, showing positions for 115V (switch down) and 230V (switch up). Factory preset is 230V. A caution advises selecting the correct voltage before first use.

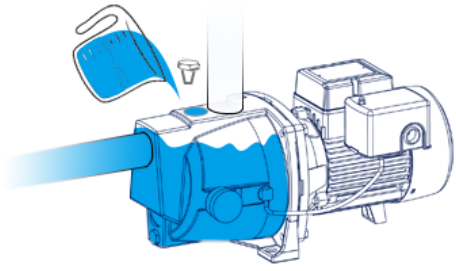
1. Ensure the pump is disconnected from all power sources.
2. Locate the voltage box cover.
3. Carefully remove the cover to access the voltage switch.
4. Adjust the switch to the appropriate voltage (115V or 230V) for your electrical system.
5. Securely replace the voltage box cover.

CAUTION: Please select the correct voltage for the first time using. Incorrect voltage selection will damage the pump.

3.3 Priming the Pump

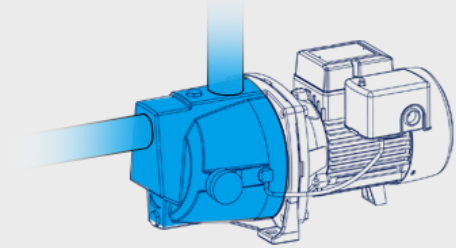
Before initial operation, the pump must be primed with water to ensure proper function and prevent dry running.

PRIME THE PUMP



Step 1

Unscrew the priming port and pour water into the cavity from the hole.



Step 2

Until the cavity is fully filled with water, reinstall the cap and the pump is ready for startup.

Instructions for priming the pump: Step 1, unscrew the priming port and pour water into the cavity; Step 2, reinstall the cap once the cavity is full.

1. Unscrew the priming port cap located on top of the pump.
2. Pour water into the cavity until it is completely filled.
3. Once the cavity is full, reinstall the priming port cap securely.
4. The pump is now ready for startup.

4. OPERATING INSTRUCTIONS

After proper installation and priming, the pump can be operated. The automatic pressure switch will manage the pump's operation to maintain desired water pressure.

- Connect the pump to the appropriate power supply (115V or 230V) after verifying the voltage switch setting.
- The pump will automatically start when the water pressure drops below 20 PSI and shut off when it reaches 40 PSI.
- Monitor the pressure gauge to ensure consistent operation.

4.1 Overheat Protection

Built-in Automatic Thermal Overload Protector

Thermo Stop



Auto Stop

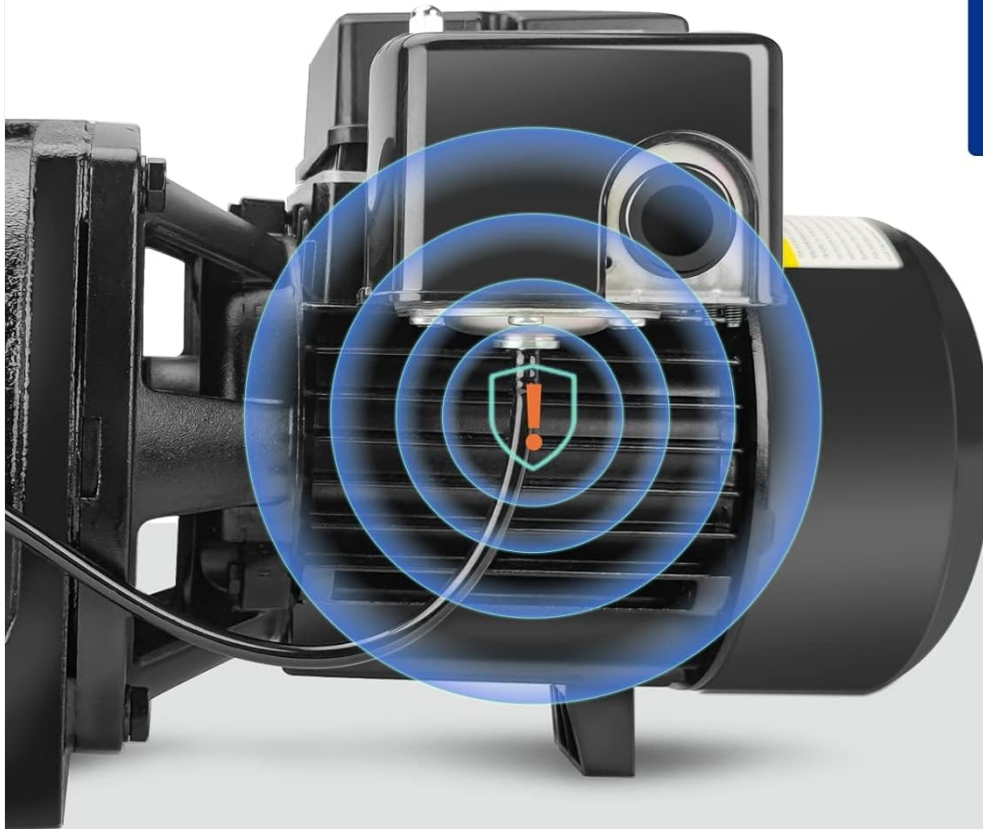


Diagram illustrating the built-in automatic thermal overload protector in the Acquaer Shallow Well Jet Pump, indicating 'Thermo Stop' and 'Auto Stop' features for motor protection.

The pump is equipped with an automatic thermal overload protector. If the motor overheats or runs dry, the pump will automatically shut down to prevent damage. Allow the pump to cool down before attempting to restart it. Check for any blockages or issues with water supply if this occurs frequently.

5. MAINTENANCE

Regular maintenance ensures the longevity and efficient performance of your pump.

- Periodically inspect all connections for leaks and tighten as necessary.
- Ensure the pump is protected from freezing temperatures. Drain the pump completely if it will be exposed to freezing conditions.
- Keep the motor's cooling fins clean and free from debris to prevent overheating.
- Check the pressure gauge regularly to ensure it is functioning correctly.

6. TROUBLESHOOTING

This section provides solutions to common issues you might encounter with your Acquaer Shallow Well Jet Pump.

Problem	Possible Cause	Solution
Pump does not start	No power; Incorrect voltage setting; Thermal overload tripped	Check power supply; Verify voltage switch setting (115V/230V); Allow motor to cool and reset.
Pump runs but no water or low pressure	Pump not primed; Air leak in suction line; Clogged inlet/outlet; Well dry	Prime the pump; Check and seal all suction line connections; Clear any blockages; Check well water level.
Pump cycles too frequently	Pressure tank issue; Leak in system; Pressure switch malfunction	Inspect pressure tank; Check for leaks in plumbing; Consult Acquaer customer service.
Excessive noise or vibration	Loose mounting; Air in pump; Worn bearings	Securely mount the pump; Prime the pump; Contact customer service for repair.


7. TECHNICAL SPECIFICATIONS

TECHNICAL SPECIFICATIONS

MODEL SJC075-1	DISCHARGE 1 inch NPT
VOLTAGE 115 V/230 V	HP 3/4 HP
MAX HEAD 167'	AMP 9.0 A/4.5 A

GPH OF WATER @ FT. OF HEAD

5'	50'	100'	140'
1130	841	427	133



The image shows the Acquaer Shallow Well Jet Pump, Model SJC075-1, which is a black, compact unit with a motor and a pressure tank. It is shown from a three-quarter view against a light gray background with the Acquaer logo.

Technical specifications for the Acquaer Shallow Well Jet Pump, Model SJC075-1.

Specification	Detail
Brand	Acquaer
Model Number	CCJC (also referred to as SJC075-1)
Power Source	Corded Electric
Voltage	115V / 230V (Dual Voltage)
Horsepower (HP)	3/4 HP

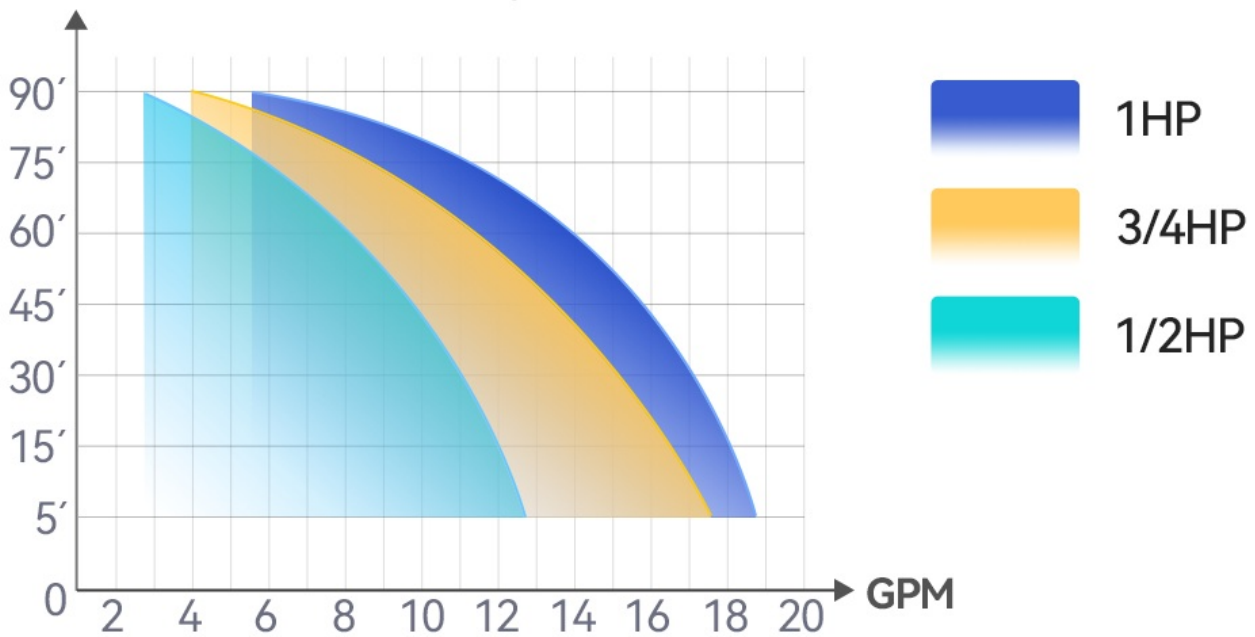
Specification	Detail
Amperage (AMP)	9.0 A (115V) / 4.5 A (230V)
Maximum Flow Rate	18 Gallons Per Minute (GPM) / 1130 GPH @ 40 PSI
Maximum Lifting Height (Max Head)	167 Feet
Well Depth Capability	Up to 25 feet
Discharge Port Size	1 inch NPT
Inlet Port Size	1-1/4 inch NPT
Material	Cast Iron
Product Dimensions (L x W x H)	16.1" x 8.9" x 8.1"
Item Weight	28 Pounds



Physical dimensions of the Acquaer Shallow Well Jet Pump.

Choose the Right Well Pump for Home

Max. ft Max. ft = Well Depth + Head



Performance chart for selecting the appropriate well pump based on horsepower, well depth, and flow rate.

8. WARRANTY AND SUPPORT

The Acquaer Shallow Well Jet Pump comes with a **24-month warranty**. Acquaer customer service is available to provide professional advice on installation and maintenance.

Capacitor Motor

High efficiency with strong suction and high flow.



High Quality

Detailed installation manual & professional advice on installation and maintenance.



Caution

Please select the correct voltage for the first time using



Information on the pump's capacitor motor, quality, voltage caution, and 24-month warranty.

For warranty registration, an extra 1-year warranty, or a free replacement, please refer to the information provided with your product packaging or contact Acquaer customer service directly.

Contact Information:

- Email: service@acquaer.com
- Website: www.acquaerpumps.com
- Facebook: [Acquaer Pump](#)