



[Manuals.plus](#) /

› [DazzlingStage](#) /

› DazzlingStage 2000W Fog Bubble Machine with RGB LED Lights Instruction Manual (Model ZQ10142)

DazzlingStage ZQ10142

DazzlingStage 2000W Fog Bubble Machine with RGB LED Lights Instruction Manual

Model: ZQ10142

[Introduction](#)

[Safety Information](#)

[Package Contents](#)

[Product Overview](#)

[Setup](#)

[Operation](#)

[Maintenance](#)

[Troubleshooting](#)

[Specifications](#)

[Warranty & Support](#)

1. INTRODUCTION

Thank you for purchasing the DazzlingStage 2000W Fog Bubble Machine. This device is designed to create dynamic atmospheric effects with fog, bubbles, and RGB LED lighting, suitable for various events. Please read this manual thoroughly before operation to ensure safe and correct usage.

2. SAFETY INFORMATION

- Always ensure the machine is placed on a stable, level surface.
- Use only recommended fog and bubble liquids. Using other liquids may damage the machine or pose a safety risk.
- Do not operate the machine without sufficient liquid in the tanks to prevent damage to internal components.
- Keep out of reach of children and pets.
- Ensure adequate ventilation when operating the machine.
- Do not block the ventilation openings.
- Disconnect from power before cleaning or maintenance.
- Avoid direct contact with fog output, especially for extended periods.

3. PACKAGE CONTENTS

Verify that all items listed below are included in your package:

- Fog Bubble Machine x 1
- Power cord x 1

- Instruction Manual x 1

4. PRODUCT OVERVIEW

The DazzlingStage 2000W Fog Bubble Machine combines three effects in one unit: fog generation, bubble production, and RGB LED lighting. It features multiple control modes for versatile use.



Image: Front view of the DazzlingStage 2000W Fog Bubble Machine, highlighting its remote control, LCD menu control, and DMX512 control options. The machine is actively producing fog and bubbles with colorful LED lights.

Key Features:

- **3-in-1 Functionality:** Produces fog, bubbles, and features 18 RGB LED lights.
- **Multiple Control Modes:** Operates via LCD display, DMX512, and remote control. Smoke, bubbles, and LED lights can be controlled independently.
- **Liquid Recycling System:** Includes a piston for recycling remaining bubble liquid and a leak-proof drawer for smoke liquid, minimizing waste and protecting the machine.

- **Portable Design:** Constructed from high-quality ABS material, weighing only 6.9kg, with two handles for easy transport.
- **High Output:** Achieves smoke spray height of 6 meters and bubble height of 4 meters.

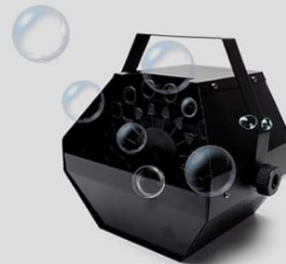


Our



- ✓ **2L** Bubble liquid container
- ✓ **1.5L** Smoke liquid container
- ✓ Use time up to **60min**

Others



✗
Only bubble



✗
Only smoke

Image: Comparison showing the DazzlingStage machine with 2L bubble liquid and 1.5L smoke liquid containers, offering up to 60 minutes of use, contrasted with other machines that only produce bubbles or smoke.

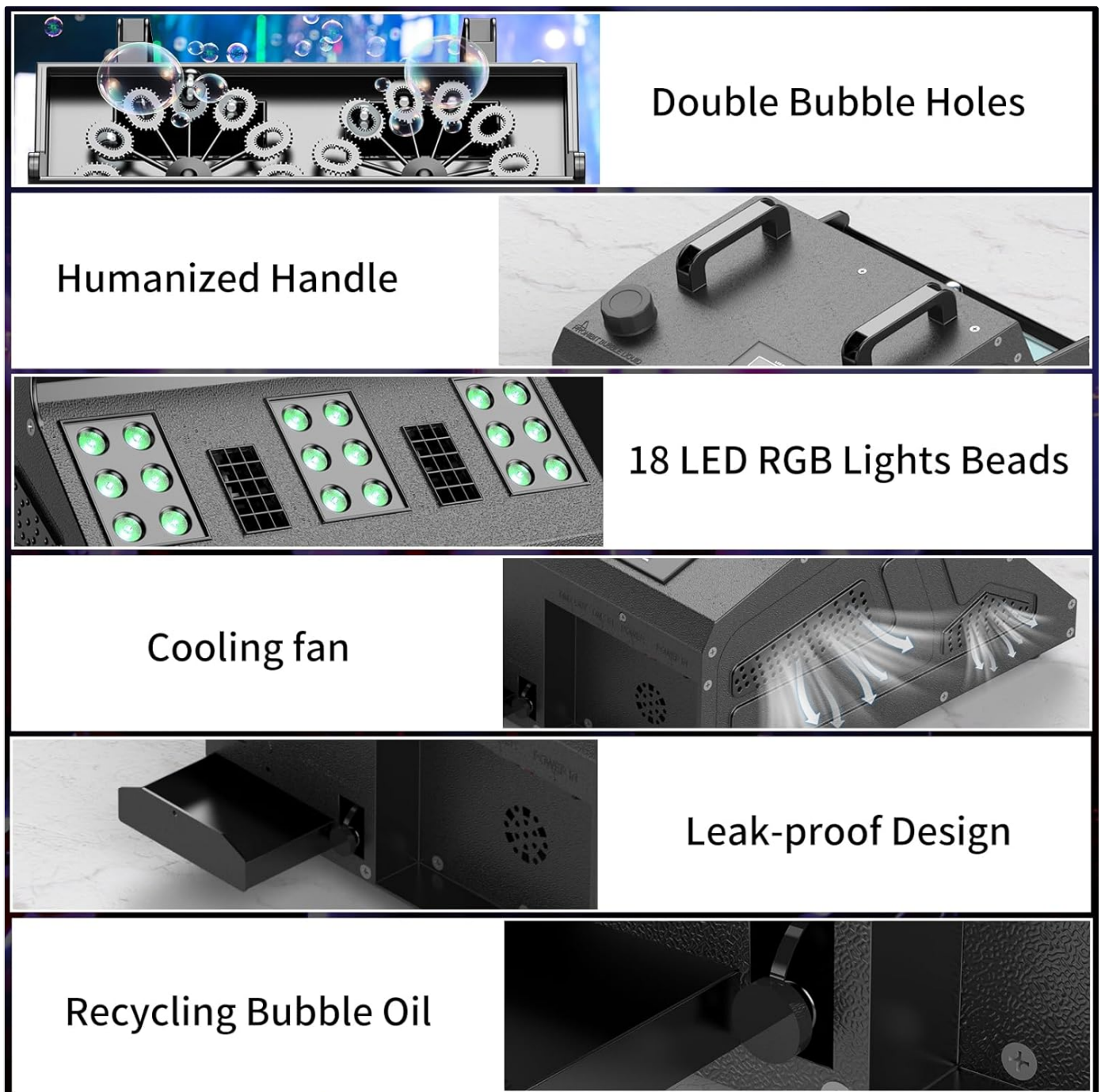


Image: Close-up views of various features including double bubble holes, ergonomic handles, 18 RGB LED lights, a cooling fan, a leak-proof design for smoke liquid, and a system for recycling bubble oil.

5. SETUP

1. **Placement:** Place the machine on a flat, stable surface in a well-ventilated area. Ensure there is enough space around the machine for proper air circulation.
2. **Fill Bubble Liquid:** Open the bubble liquid tank and carefully pour bubble fluid. Do not overfill; the fluid level should be approximately 2/3 of the tank capacity.
3. **Fill Fog Fluid:** Open the fog fluid tank and pour high-density fog liquid. Ensure the tank is adequately filled.
Caution: Never run the machine on an empty fog liquid tank as this can cause damage.
4. **Connect Power:** Plug the power cord into the machine's power input and then into a standard AC110V-130V 50/60Hz power outlet.
5. **Pre-heating:** Turn on the machine. The initial heating time is approximately 3-5 minutes. The LCD display will indicate "READY" once heating is complete. Subsequent heating cycles take 45-60 seconds.



Step.1

Open the tank and add the bubble fluid. Pay attention that the bubble fluid should not be too full, which is about 2/3 of the capacity.



Step.2

Pour the smoke oil into the smoke oil tank. (Remember to add smoke oil in time to avoid damaging the machine. 1 liter of smoke oil, can be used for 1 hour.)



Step.3

Plug the adapter cable into the fog machine to heat the fog machine.



Step.4

Heat the fog machine for 3-4 minutes, then wait for the display to light up with "READY" .



Step.5

Use the remote control to control the smoke from the fog machine after it has warmed up.

Image: A visual step-by-step guide showing how to fill the bubble and fog liquids, connect the power, wait for heating, and operate with the remote control.

Your browser does not support the video tag.

Video: Official DazzlingStage video demonstrating the setup process, including filling liquids and initial power-on. This video is provided by the seller and is directly relevant to the product.

6. OPERATION

The machine offers three control methods: LCD display, DMX512, and remote control. Bubbles can operate immediately upon power-on without heating, while fog requires pre-heating.

6.1. LCD Display Control

Use the MENU, UP, DOWN, BUBBLE, FOG, and MANUAL buttons on the LCD display panel to navigate settings and activate functions. The display provides real-time status information.



Image: An exploded view diagram labeling the various parts of the machine, including the LCD display, handles, liquid tanks, fans, bubble wheels, and LED lights.

6.2. Remote Control

The included wireless remote control allows for convenient activation of various effects:

Button	Function
1 ALL ON	Open smoke + bubble
2 FOG ON	Open the smoke
3 BUB ON	Open the bubble
4 LED ON	Turn on the light
5 ALL OFF	Close the smoke + bubble

Button	Function
6 FOG OFF	Turn off the smoke
7 BUB OFF	Turn off the bubble
8 LED OFF	Turn off the lights

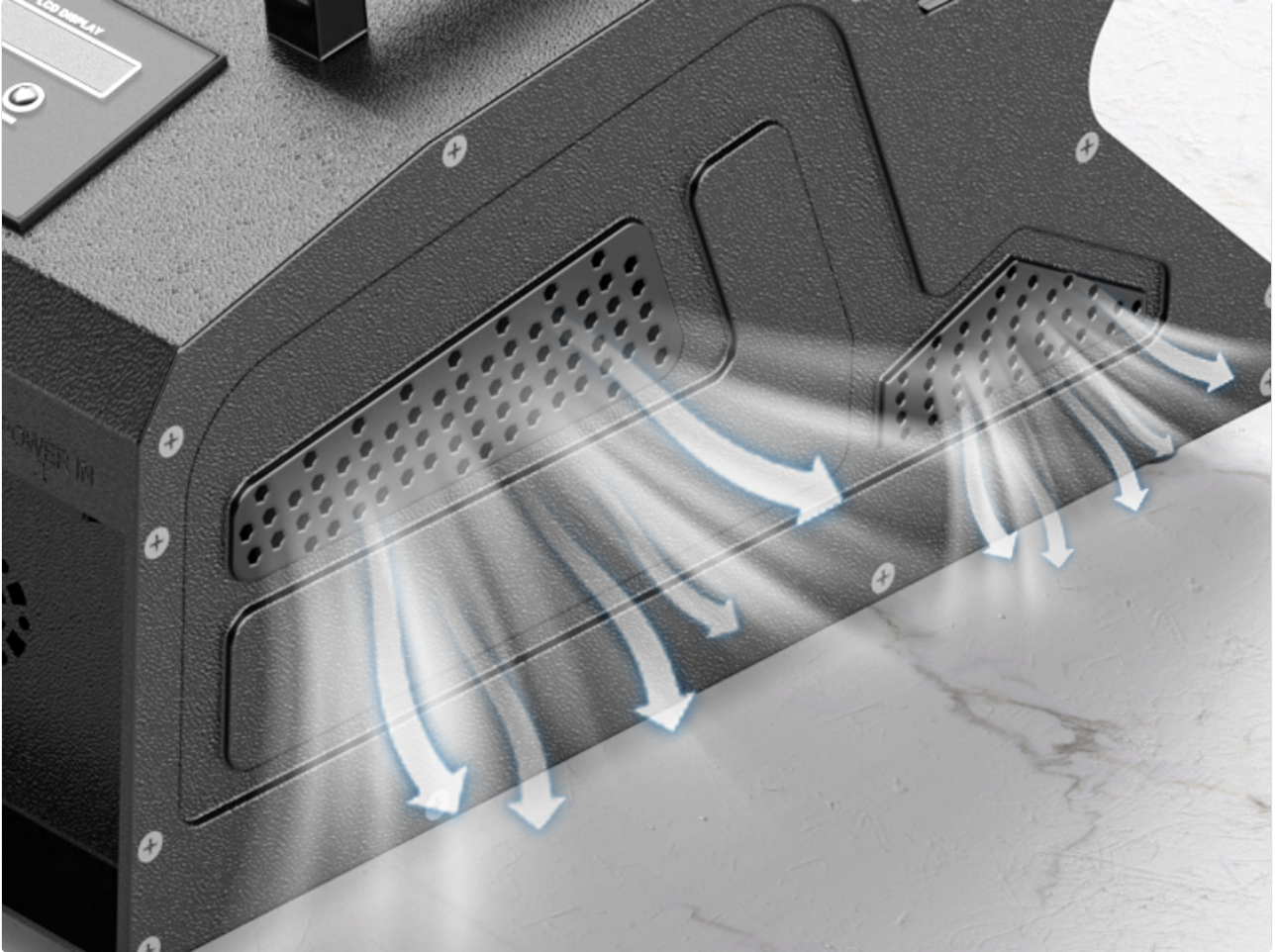


Image: A diagram illustrating the remote control and its corresponding functions for operating the fog, bubble, and LED light features.

6.3. DMX512 Control

The machine supports 7-channel DMX control, allowing integration with professional lighting systems. Refer to your DMX controller's manual for specific programming instructions. Smoke, bubbles, and LED lights can be controlled separately via DMX512.

Your browser does not support the video tag.

Video: A seller-provided video demonstrating the fog and bubble machine in action, showcasing its various light colors and effects. This video highlights the machine's operational capabilities.

7. MAINTENANCE

- **Bubble Liquid Recycling:** After use, pull out the small piston at the back of the machine to drain any remaining bubble liquid into a bottle for future use. This prevents waste and protects the machine.
- **Smoke Liquid Leak-proof Design:** A small pull-out drawer is located under the smoke liquid container. Clean any leaked smoke liquid every 30 minutes and collect it for reuse.
- **Cleaning:** Regularly clean the exterior of the machine with a soft, dry cloth. Do not use abrasive cleaners or solvents.

- **Storage:** When not in use for extended periods, ensure all liquid tanks are emptied and cleaned. Store the machine in a cool, dry place.



Image: A close-up of the machine's rear, illustrating the leak-proof design for smoke liquid with a removable tray to collect any drips, ensuring cleanliness and reusability.

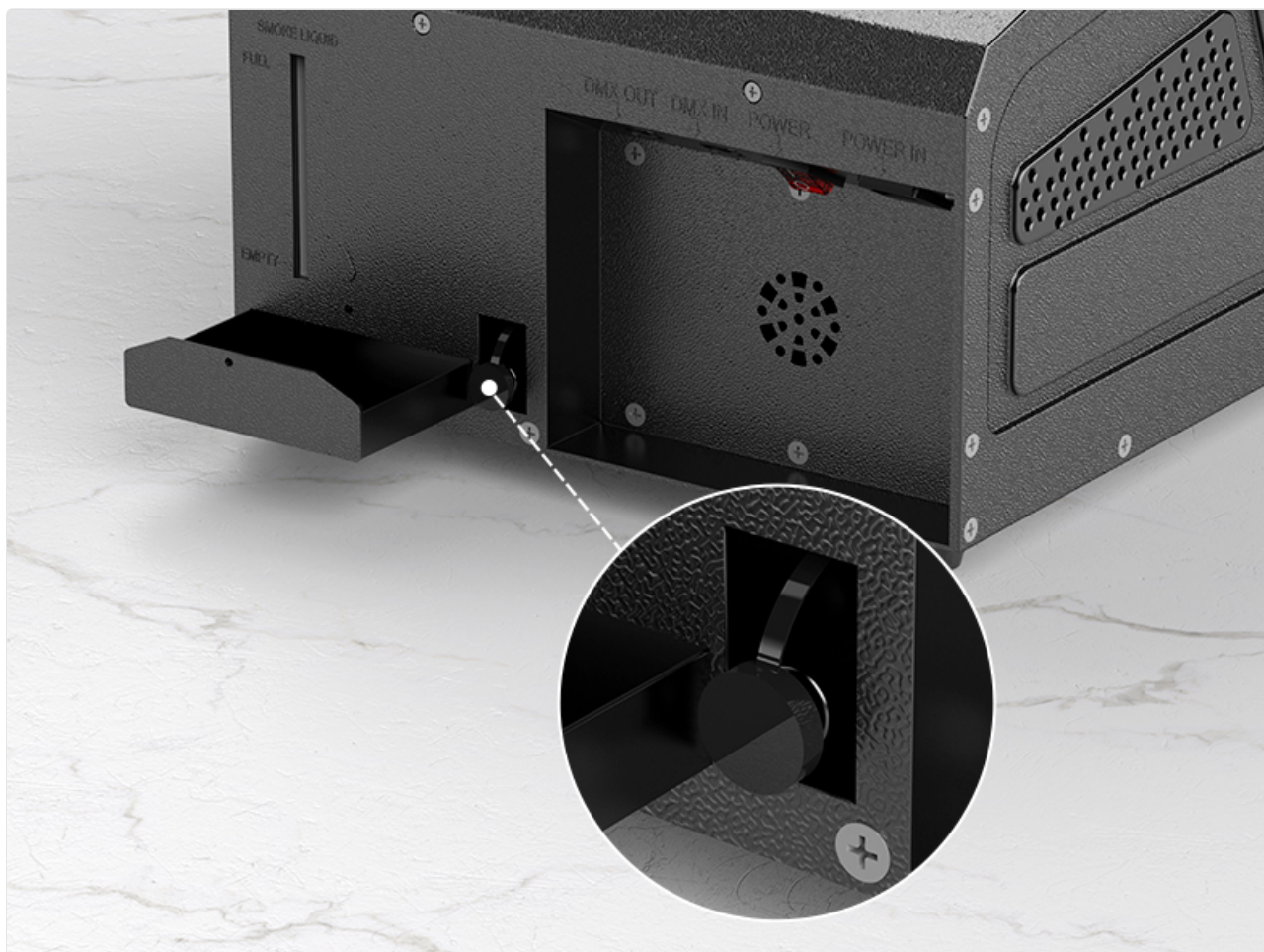


Image: A detailed view of the bubble liquid recycling piston, which allows users to easily drain and collect unused bubble fluid from the machine.

8. TROUBLESHOOTING

Problem	Possible Cause	Solution
---------	----------------	----------

Problem	Possible Cause	Solution
No fog/bubbles output	No power; insufficient liquid; machine not heated (for fog); clogged nozzle.	Check power connection; refill liquid tanks; wait for "READY" indicator; clean nozzle.
LED lights not working	Lights turned off; DMX settings incorrect.	Activate lights via remote/LCD/DMX; check DMX channel settings.
Remote control not responding	Battery low/dead; out of range; interference.	Replace battery; move closer to machine; reduce interference.

9. SPECIFICATIONS

Feature	Detail
Model Number	ZQ10142
Voltage	AC110V-130V 50/60Hz
Power	2000W
Light Source	18 RGB LEDs
Oil Drum Capacity (Smoke)	2000ml (0.53gal) - Available in 1 hour
Bubble Oil Capacity	1000ml (0.26gal) - Available in 30 minutes
Warm-up Time (Fog)	3-5 minutes
Bubble Blowing Time	2-3 minutes
Control Mode	Remote/DMX Control
Item Weight	16.83 pounds
Package Dimensions	22.44 x 16.54 x 13.78 inches



Image: A diagram illustrating the physical dimensions of the fog bubble machine and its remote control for reference.

10. WARRANTY & SUPPORT

For any questions or issues regarding your DazzlingStage Fog Bubble Machine, please feel free to contact us anytime. We are committed to providing excellent customer service and will reply within 24 hours. Please refer to your purchase documentation for specific warranty details.

