

Phomemo M835-BK

Phomemo M835 Portable Printer User Manual

Inkless Thermal Printer for Travel and Mobile Use

1. INTRODUCTION

The Phomemo M835 is a compact and lightweight inkless thermal printer designed for on-the-go printing. Utilizing advanced thermal technology, it eliminates the need for ink cartridges, ribbons, or toner, offering a cost-effective and clean printing solution. This manual provides essential information for setting up, operating, maintaining, and troubleshooting your M835 printer.



Figure 1: Phomemo M835 Portable Thermal Printer



Figure 2: Compact and Portable Design of the M835 Printer

Video 1: Overview of the M835 Portable Printer for Travel

2. WHAT'S IN THE BOX

Your Phomemo M835 package includes the following items:

- 1 x M835 Portable Thermal Printer
- 1 x A4 Size Thermal Paper Roll (pre-installed in the printer paper bin)
- 1 x Flannel Storage Bag
- 1 x Type-C Charging Cable
- 1 x Quick Start Guide

3. SETUP

3.1 Initial Charging

Before first use, fully charge your Phomemo M835 printer using the provided Type-C charging cable. The printer features a 2600 mAh battery, capable of printing up to 150 sheets on a full charge.

3.2 Loading Paper

The M835 printer supports various thermal paper types and sizes, including 8.5"/A4, 4.33", 3.15", and 2.08" rolls, as well as individual sheets and folded paper. A roll of A4 thermal paper is pre-installed.

1. To open the paper bin, press the cover open buttons located on either side of the printer.
2. Remove any protective paper or empty rolls.
3. Insert the thermal paper roll or individual sheets, ensuring the paper is aligned correctly with the adjustable stoppers.
4. Close the top cover securely.



Figure 3: Built-in Paper Bin for Thermal Paper Rolls



Figure 4: Supported Thermal Paper Sizes

3.3 Powering On/Off

Press and hold the power button on the printer for 3 seconds to turn it on or off. The indicator light will illuminate when the printer is on.

3.4 Connecting to Devices

The Phomemo M835 offers versatile connectivity options:

3.4.1 Mobile Devices (iOS & Android) via Bluetooth

1. Download the "Phomemo" App from the App Store (iOS) or Google Play (Android).
2. Ensure Bluetooth is enabled on your mobile device.
3. Open the Phomemo App, go to settings, and select the M835 model.
4. The app will automatically search for and connect to your printer.

Upgraded **2600mAh** Battery Capacity

Print 150 sheets when fully charged



Figure 5: Bluetooth and USB Connectivity

Video 2: How to connect the M835 portable printer with the Phomemo app

3.4.2 Computers (Windows/Mac/Linux) via USB

1. Visit M835.phomemo.com to download the appropriate driver for your operating system (Windows, Mac, or Linux).
2. Install the downloaded driver on your computer.
3. Connect the M835 printer to your computer using the provided Type-C USB cable.
4. Once the driver is installed and the printer is connected, it will appear as an available printer in your system's print dialogue.

Video 3: How to set up the M835 Thermal Printer on Windows

Video 4: How to use the M835 Portable Printer on Mac

Video 5: How to set up the M835 Portable Printer on Linux System

4. OPERATING INSTRUCTIONS

4.1 Printing Documents

Once connected, you can print documents directly from the Phomemo app on your mobile device or from any application

on your computer. Select "M835" as your printer from the print dialogue.

4.2 Inkless Thermal Printing

The M835 uses thermal printing technology, which means it does not require ink. Instead, it uses heat to react with specially coated thermal paper, producing crisp, clear black-and-white prints. This eliminates the mess and cost associated with traditional ink printers.



Figure 6: Benefits of Inkless Thermal Printing

5. MAINTENANCE

5.1 Cleaning the Print Head

To ensure optimal print quality, regularly clean the print head. Use a soft, lint-free cloth lightly dampened with isopropyl alcohol. Gently wipe the print head surface. Ensure the printer is off and cool before cleaning.

5.2 Paper Storage

Thermal paper is sensitive to heat, light, and humidity. Store thermal paper in a cool, dry place away from direct sunlight and heat sources to prevent discoloration and fading of prints over time.

5.3 Battery Care

To prolong battery life, avoid fully discharging the printer frequently. Charge the printer regularly, even if not in constant

use. Store the printer in a cool, dry place when not in use for extended periods.

6. TROUBLESHOOTING

6.1 Common Issues and Solutions

- **Printer not connecting:** Ensure Bluetooth is on (for mobile) or USB cable is securely connected and drivers are installed (for computer). Restart both the printer and your device.
- **Poor print quality:** Check if the thermal paper is loaded correctly and is not damaged. Clean the print head as described in the Maintenance section.
- **Paper jams:** Open the printer cover and carefully remove any jammed paper. Ensure paper is loaded straight and not wrinkled.
- **Printer not turning on:** Ensure the battery is charged. Connect the printer to a power source using the Type-C cable.


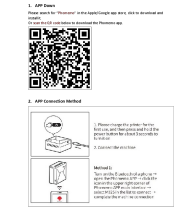
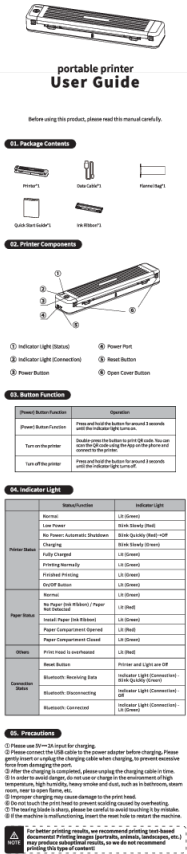
For more detailed troubleshooting steps, please refer to the Phomemo App's FAQ section or visit the official Phomemo support website.

7. SPECIFICATIONS

Feature	Detail
Model Name	M835-BK
Printing Technology	Thermal
Connectivity	Bluetooth, USB (Type-C)
Max Print Resolution	203 dpi
Supported Paper Sizes	8.5" x 11" (US Letter), A4, 4.33" (110mm), 3.15" (80mm), 2.08" (53mm)
Supported Paper Types	Thermal Paper Roll, Individual-sheet Thermal Paper, Folded Thermal Paper
Battery Capacity	2600 mAh
Max Input Sheet Capacity	150 sheets (continuous printing)
Item Weight	1.5 pounds
Product Dimensions	10.39"D x 3.07"W x 1.77"H

8. WARRANTY AND SUPPORT

The Phomemo M835 Portable Printer comes with a limited warranty. For specific warranty terms and conditions, please refer to the warranty card included in your product packaging or visit the official Phomemo website. For further assistance, technical support, or to purchase accessories and thermal paper, please visit the [Phomemo Store on Amazon](#) or the official Phomemo website.

	<h3>Phomemo M08F Quick Start Guide: Computer and Smartphone Printing</h3> <p>A concise guide to setting up and using the Phomemo M08F portable printer for printing from computers (Windows, Mac, Linux) via USB and from smartphones via Bluetooth, including setup instructions and regulatory information.</p>
	<h3>Phomemo M02S Printer: App Download, Connection, and Sticker Paper Replacement Guide</h3> <p>A comprehensive guide for the Phomemo M02S printer, covering app download, Bluetooth connection methods, and step-by-step instructions for replacing sticker paper.</p>
	<h3>Phomemo P831 Portable Printer User Guide</h3> <p>Comprehensive user guide for the Phomemo P831 portable printer, covering package contents, printer components, button functions, indicator lights, precautions, app installation, paper usage, cleaning, and warranty information.</p>

A comprehensive troubleshooting guide for Phomemo A281M, A282M, and A285M thermal printers, covering product information, usage, common machine and connection issues, printing problems, and app-related questions.

Guide de prise en main rapide

M08F

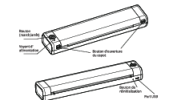
imprimante portable



01. Filaires d'origine



02. Description de l'imprimante



03. Description de l'état de l'imprimante

Nom	État	Description de la fonction
État d'attente	État d'attente	Attente de données
État d'impression	État d'impression	Impression en cours
État d'erreur	État d'erreur	Erreur de papier ou de température
État de charge	État de charge	Chargement en cours

04. Fonction du bouton

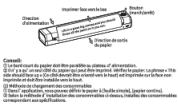
Fonction du bouton	Description
Bouton d'alimentation	Appuyer sur le bouton d'alimentation pour allumer l'imprimante.
Bouton d'impression	Appuyer sur le bouton d'impression pour imprimer.

05. Attention

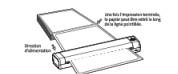
05.1 Attention à l'usage de l'imprimante
05.2 Attention à l'usage de l'imprimante
05.3 Attention à l'usage de l'imprimante
05.4 Attention à l'usage de l'imprimante
05.5 Attention à l'usage de l'imprimante
05.6 Attention à l'usage de l'imprimante
05.7 Attention à l'usage de l'imprimante
05.8 Attention à l'usage de l'imprimante
05.9 Attention à l'usage de l'imprimante
05.10 Attention à l'usage de l'imprimante

06. Installation et utilisation

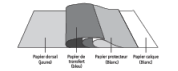
06.1 Installation de l'imprimante
06.2 Utilisation de l'imprimante
06.3 Utilisation de l'imprimante
06.4 Utilisation de l'imprimante
06.5 Utilisation de l'imprimante
06.6 Utilisation de l'imprimante
06.7 Utilisation de l'imprimante
06.8 Utilisation de l'imprimante
06.9 Utilisation de l'imprimante
06.10 Utilisation de l'imprimante



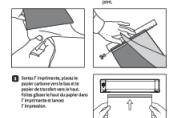
06.11 Utilisation de l'imprimante
06.12 Utilisation de l'imprimante
06.13 Utilisation de l'imprimante
06.14 Utilisation de l'imprimante
06.15 Utilisation de l'imprimante
06.16 Utilisation de l'imprimante
06.17 Utilisation de l'imprimante
06.18 Utilisation de l'imprimante
06.19 Utilisation de l'imprimante
06.20 Utilisation de l'imprimante



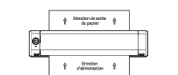
07. Utilisation de l'imprimante



07.1 Utilisation de l'imprimante
07.2 Utilisation de l'imprimante
07.3 Utilisation de l'imprimante
07.4 Utilisation de l'imprimante
07.5 Utilisation de l'imprimante
07.6 Utilisation de l'imprimante
07.7 Utilisation de l'imprimante
07.8 Utilisation de l'imprimante
07.9 Utilisation de l'imprimante
07.10 Utilisation de l'imprimante



07.11 Utilisation de l'imprimante
07.12 Utilisation de l'imprimante
07.13 Utilisation de l'imprimante
07.14 Utilisation de l'imprimante
07.15 Utilisation de l'imprimante
07.16 Utilisation de l'imprimante
07.17 Utilisation de l'imprimante
07.18 Utilisation de l'imprimante
07.19 Utilisation de l'imprimante
07.20 Utilisation de l'imprimante



08. Modes de chargement du filaire

08.1 Modes de chargement du filaire
08.2 Modes de chargement du filaire
08.3 Modes de chargement du filaire
08.4 Modes de chargement du filaire
08.5 Modes de chargement du filaire
08.6 Modes de chargement du filaire
08.7 Modes de chargement du filaire
08.8 Modes de chargement du filaire
08.9 Modes de chargement du filaire
08.10 Modes de chargement du filaire



08.11 Modes de chargement du filaire
08.12 Modes de chargement du filaire
08.13 Modes de chargement du filaire
08.14 Modes de chargement du filaire
08.15 Modes de chargement du filaire
08.16 Modes de chargement du filaire
08.17 Modes de chargement du filaire
08.18 Modes de chargement du filaire
08.19 Modes de chargement du filaire
08.20 Modes de chargement du filaire

08.21 Modes de chargement du filaire
08.22 Modes de chargement du filaire
08.23 Modes de chargement du filaire
08.24 Modes de chargement du filaire
08.25 Modes de chargement du filaire
08.26 Modes de chargement du filaire
08.27 Modes de chargement du filaire
08.28 Modes de chargement du filaire
08.29 Modes de chargement du filaire
08.30 Modes de chargement du filaire

08.31 Modes de chargement du filaire
08.32 Modes de chargement du filaire
08.33 Modes de chargement du filaire
08.34 Modes de chargement du filaire
08.35 Modes de chargement du filaire
08.36 Modes de chargement du filaire
08.37 Modes de chargement du filaire
08.38 Modes de chargement du filaire
08.39 Modes de chargement du filaire
08.40 Modes de chargement du filaire

08.41 Modes de chargement du filaire
08.42 Modes de chargement du filaire
08.43 Modes de chargement du filaire
08.44 Modes de chargement du filaire
08.45 Modes de chargement du filaire
08.46 Modes de chargement du filaire
08.47 Modes de chargement du filaire
08.48 Modes de chargement du filaire
08.49 Modes de chargement du filaire
08.50 Modes de chargement du filaire

--	--