

## Sharp CV-S71-W

# SHARP CV-S71-W Dehumidifier Instruction Manual

Model: CV-S71-W | Brand: Sharp

## 1. INTRODUCTION

Thank you for purchasing the Sharp CV-S71-W Dehumidifier. This appliance is designed to provide efficient dehumidification and clothes drying, especially in compact living spaces. It incorporates advanced Plasmacluster technology to enhance air quality by deodorizing and suppressing mold and bacteria. Please read this manual thoroughly before use to ensure safe and optimal operation.



*Figure 1.1: Front view of the Sharp CV-S71-W Dehumidifier.*

## 2. KEY FEATURES

- **Efficient Compressor Dehumidification:** Capable of removing 7.1 liters of moisture per day (60Hz), ideal for humid seasons.
- **Fast Clothes Drying:** Dries approximately 2kg of laundry in about 167 minutes.
- **Plasmacluster 7000 Technology:** Sharp's unique air purification system helps eliminate room-drying odors and inhibits the growth of airborne mold and bacteria.
- **Compact Design:** Occupies a footprint roughly the size of an A4 sheet of paper, making it suitable for small rooms.
- **Continuous Drainage Capability:** Allows for extended operation without needing to empty the water tank frequently (requires a commercially available hose, 15mm inner diameter).

- **Portable:** Equipped with a convenient handle for easy transport between rooms.
- **User-Friendly Tank:** The drainage tank features a simple design with minimal irregularities for easy cleaning.
- **Dust Block Pre-filter:** Captures large dust particles at the air intake.
- **Internal Drying Function:** Helps dry the interior of the unit to prevent mold and odors.

※1

# 洗いにくい衣類を手軽に消臭 衣類消臭運転

プラズマクラスターの風で、洗いにくいジャケットや制服などに付着したニオイを消臭します。





●「く付着汗臭」●試験機関：当社調べ●試験方法：汗のニオイ成分がしみこんだ布片で消臭効果を6段階臭気強度表示法にて評価。■試験結果：約6時間で気にならないレベルまで消臭。CV-E71（Cタイプと同等性能機種）のイオン送風「殺菌」運転で実施。  
●ニオイの種類・強さ・対象物の素材などによって、消臭効果は異なります。  
●吹き出す風の当たらない部分の消臭や風の抑制はできません。

Figure 2.1: Overview of dehumidification capacity and clothes drying performance.

### 3. SETUP

1. **Unpacking:** Carefully remove the dehumidifier from its packaging. Retain all packaging materials for future transport or storage.
2. **Placement:** Place the unit on a flat, stable surface. Ensure there is adequate space around the unit for proper airflow (at least 30 cm from walls or furniture). The compact design allows for placement in small areas, with a footprint of approximately A4 size.
3. **Power Connection:** Plug the power cord securely into a grounded electrical outlet. Ensure the voltage matches the unit's requirements.
4. **Water Tank Installation:** Ensure the water tank is correctly inserted into the unit. The tank is designed for easy handling and removal.

5. **Continuous Drainage (Optional):** For continuous operation without emptying the tank, connect a commercially available hose (inner diameter 15mm) to the continuous drainage port at the back of the unit. Ensure the hose is sloped downwards to allow water to drain freely into a suitable receptacle or drain.

## ハンドル付きで 持ち運びラクラク



Figure 3.1: The compact footprint of the dehumidifier, approximately A4 size.



Figure 3.2: Continuous drainage setup with an external hose.

## 4. OPERATING INSTRUCTIONS

## 4.1. Basic Operation

- **Power On/Off:** Press the Power button to turn the unit on or off.
- **Mode Selection:** Use the Mode button to cycle through available modes, such as Dehumidification, Clothes Drying, and Deodorization.
- **Louvers:** Adjust the louvers to direct the airflow. For optimal clothes drying, ensure the airflow covers the entire laundry area. Directing louvers downwards can help target damp areas on floors or mats.

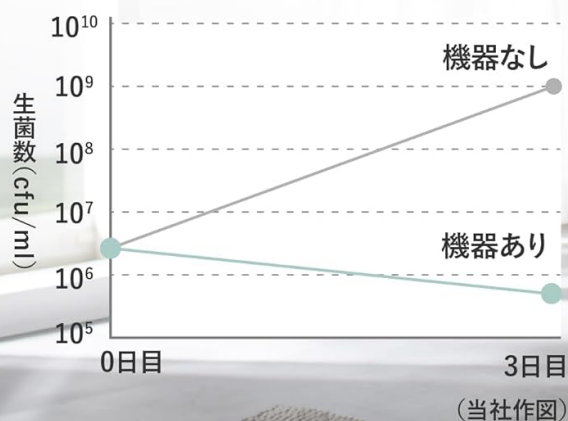
## 4.2. Dehumidification

The compressor method efficiently removes moisture from the air. Humid air is drawn into the unit, cooled by a refrigerant, causing moisture to condense into water droplets that collect in the tank. The dry air is then released back into the room.

# バスマットに付着した菌の増殖を抑制

## バスマットに付着した菌の増殖効果

(縦軸1目盛低減は生菌数90%減に相当)



すべての付着菌に対応するわけではありません。菌の種類・対象物の素材などによって効果は異なります。

●約20m<sup>3</sup>(約5畳相当)の試験空間で、本体から約50cmの位置で、衣類乾燥(強)運転時の3日後(1日12時間)の効果です。実使用空間での実証結果ではありません。

使用場所の状況や使いかたによって効果は異なります。吹き出す風の当たらない部分の菌は抑制できません。

※効果についての試験の概要および効果については、シャープのホームページの製品ページをご覧ください。

Figure 4.1: Diagram illustrating the compressor dehumidification process.

## 4.3. Clothes Drying

Place laundry in an enclosed space with the dehumidifier. Select the Clothes Drying mode. The unit will circulate dry air to speed up the drying process. The unit can automatically detect the drying status of clothes and stop operation when they are dry.

# 24時間連続排水に対応



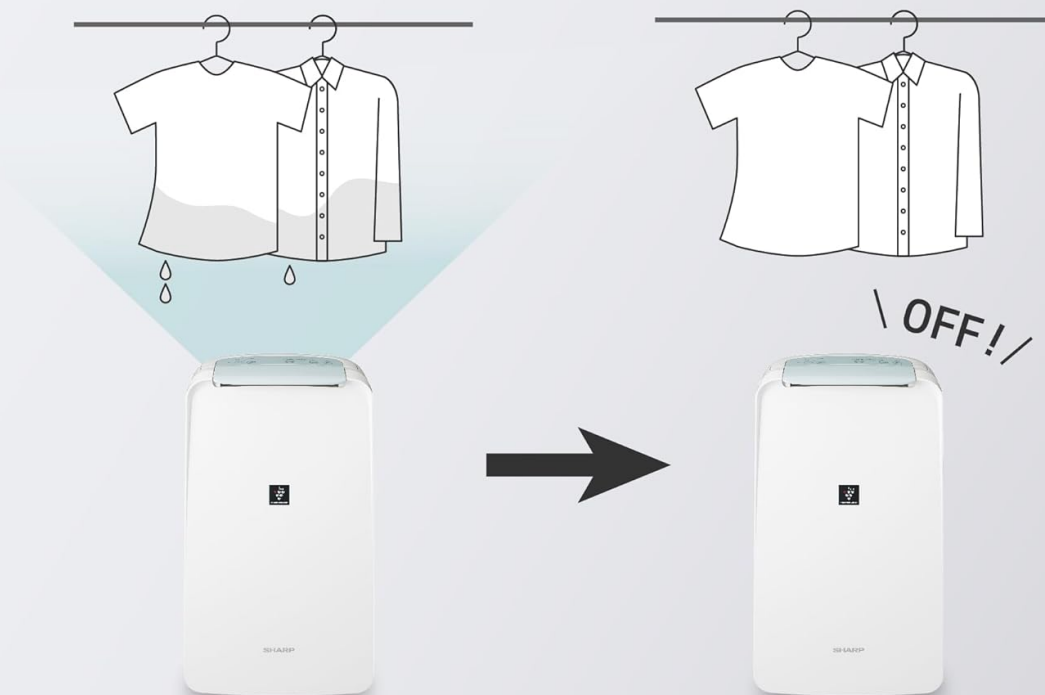
※市販のホース<内径15mm>が必要です。

*Figure 4.2: The unit automatically stops clothes drying when laundry is dry.*

## 4.4. Plasmacluster Deodorization

The Plasmacluster 7000 technology releases positive and negative ions into the air, which surround and break down airborne contaminants. This function is effective in deodorizing room-drying odors, suppressing mold growth, and inhibiting bacteria on surfaces.

# 衣類の乾燥状態を見極めて 自動で衣類乾燥を終了



\*「衣類乾燥(エコ自動)」のときは、衣類の量や風の当たりかたによって、衣類が完全に乾かずに運転停止する場合があります。  
乾きが不十分なときは「衣類乾燥(速乾または標準)」をおすすめします。

Figure 4.3: Plasmacluster technology helps eliminate various odors and inhibit mold.

# 設置スペースは ほぼA4サイズ



Figure 4.4: Plasmacluster ions deodorizing hard-to-wash items like jackets.



# オートオフ機能で 切り忘れ防止



12時間

OFF!!



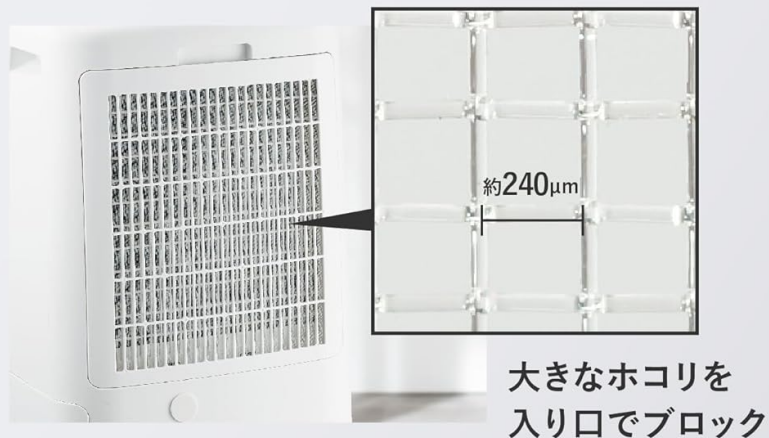
● 24時間連続運転する場合は、オートオフ機能を解除して使用ください。

Figure 4.5: Plasmacluster helps suppress bacterial growth on bath mats.

## 4.5. Timer and Auto-Off

The unit features a timer function for scheduled operation. It also has an auto-off function that activates after 12 hours of continuous operation to prevent accidental prolonged use. This auto-off can be disabled for 24-hour continuous drainage.

# こだわりの使いやすさ



お手入れしやすいハンドル付き  
タンク



本体の内部に残った水分を乾燥  
※写真・イラストはイメージです

Figure 4.6: The unit automatically turns off after 12 hours of operation.

## 5. MAINTENANCE

### 5.1. Water Tank Cleaning

The water tank should be emptied and cleaned regularly to prevent mold and bacterial growth. The tank is designed with minimal irregularities for easy cleaning. Use a soft cloth and mild detergent if necessary, then rinse thoroughly.

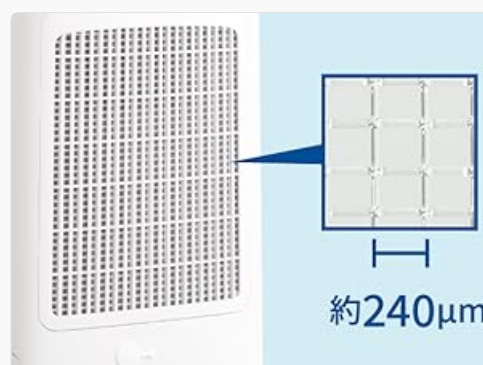


Figure 5.1: The water tank features a handle for easy removal and cleaning.

## 5.2. Air Filter Cleaning

The dust block pre-filter should be cleaned periodically to maintain optimal performance. Remove the filter and gently brush off any accumulated dust. For heavier dirt, wash with water and mild detergent, then allow it to dry completely before reinserting.



Figure 5.2: Close-up of the dust block pre-filter, designed to block large dust particles.

## 5.3. Internal Drying Function

To prevent mold and odors inside the unit, utilize the internal drying function. This can be activated by running the clothes deodorization

### Related Documents - CV-S71-W

	<p><a href="#">Sharp DW-D12A Dehumidifier Operation Manual</a></p> <p>Comprehensive operation manual for the Sharp DW-D12A dehumidifier, covering features, safety precautions, operation, maintenance, specifications, and troubleshooting. Learn how to use Plasmacluster Ion technology for improved air quality.</p>
	<p><a href="#">Sharp Room Air Conditioner User Manual</a></p> <p>This user manual provides instructions for the Sharp Room Air Conditioner models AC-225FD, AC-255FD, and AC-285FD. It covers installation, operation, maintenance, troubleshooting, and safety precautions.</p>
	<p><a href="#">Sharp DW-J27FV/J27FM/J20FM Air Purifying Dehumidifier Operation Manual</a></p> <p>Official operation manual for Sharp DW-J27FV, DW-J27FM, and DW-J20FM air purifying dehumidifiers. Learn about features, operation, maintenance, and troubleshooting for optimal air quality.</p>
	<p><a href="#">Sharp KD-NHA8S6GW3-CB Tumble Dryer User Manual - Operation, Safety, and Maintenance</a></p> <p>Comprehensive user manual for the Sharp KD-NHA8S6GW3-CB Tumble Dryer, covering safety instructions, installation, operation, cleaning, troubleshooting, and technical specifications.</p>



[SHARP FU-NC01 Air Purifier Operation Manual](#)

Comprehensive operation manual for the SHARP FU-NC01 Air Purifier, covering setup, usage, maintenance, safety guidelines, and troubleshooting for optimal air purification.



[SHARP FP-J40 Series Air Purifier Operation Manual](#)

User manual for the SHARP FP-J40E, FP-J40L, and FP-J40M air purifiers. Learn about features, installation, operation, maintenance, and troubleshooting for your SHARP air purifier.