

[Manuals.plus](#) /

> [WYZBEN](#) /

> Instruction Manual for WYZBEN Suspension Springs

WYZBEN 100M 101M

WYZBEN Suspension Spring Replacement Manual

For Jauch 77 Emperor 100M & 101M Grandfather Clocks

1. PRODUCT OVERVIEW

This manual provides instructions for the installation and care of the WYZBEN Suspension Spring Replacement set. These springs are designed as high-quality aftermarket parts for specific grandfather clock movements, ensuring proper pendulum function.

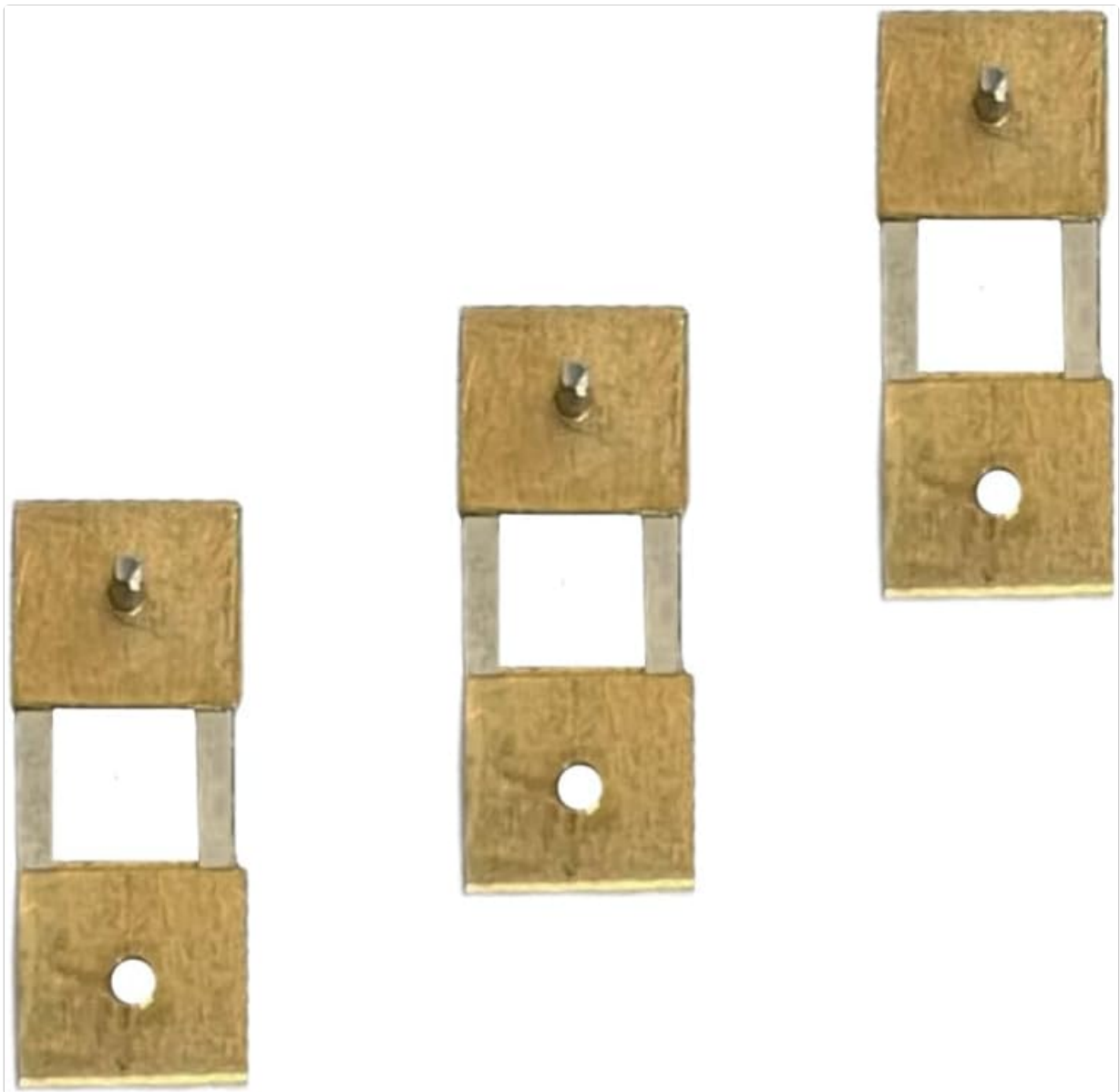


Image 1.1: A set of three WYZBEN suspension springs, showing their metallic construction and design.

2. COMPATIBILITY

The WYZBEN Suspension Springs are specifically designed as replacement parts for the **Jauch 77 clock movement**, commonly found in **Emperor Grandfather Clock models 100M and 101M**. They are also suitable for other pendulum clocks, including wall clocks, that utilize a suspension spring of similar dimensions and design.

3. PRODUCT SPECIFICATIONS

- **Quantity:** 3 pieces per package
- **Material:** Metal
- **Approximate Dimensions:** 11/16 inches (17.5mm) in length x 5/16 inches (7.9mm) in width
- **Weight:** Approximately 0.317 ounces (total for the set)
- **Color:** Metallic

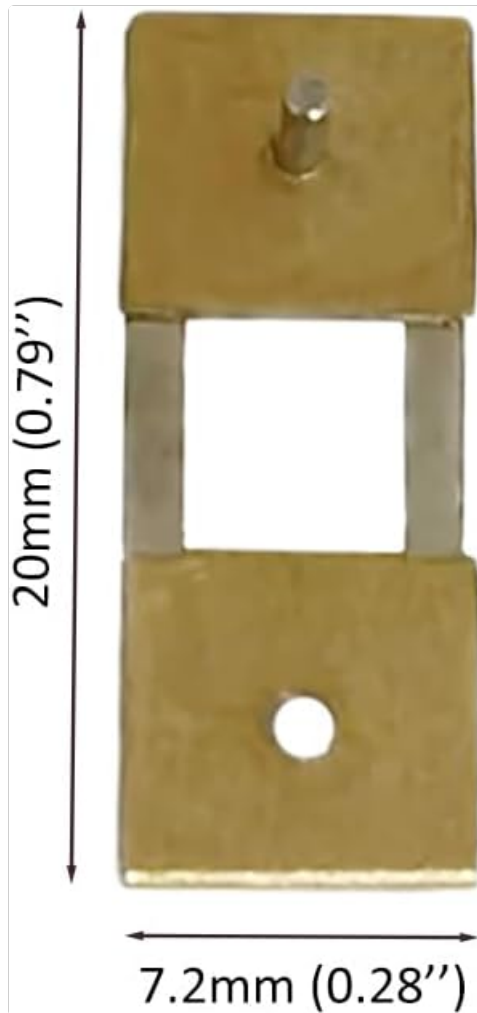


Image 3.1: A single suspension spring with its approximate length (20mm / 0.79") and width (7.2mm / 0.28") clearly indicated.

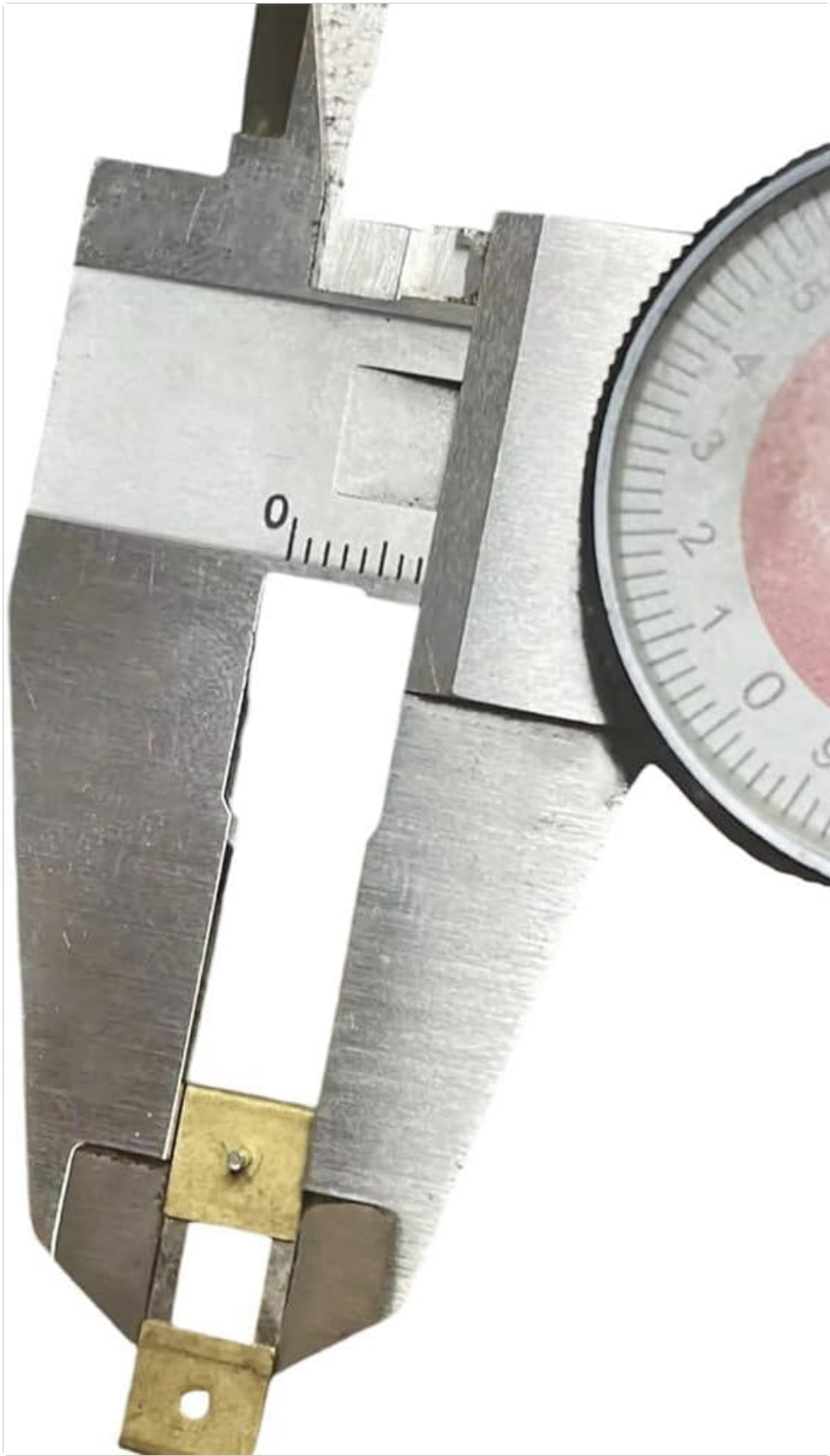


Image 3.2: A suspension spring held by a digital caliper, demonstrating its length measurement.



Image 3.3: A suspension spring held by a digital caliper, demonstrating its width measurement.

4. INSTALLATION (REPLACEMENT)

The suspension spring is a critical component that supports the pendulum and allows it to swing freely. Replacing a broken or worn spring is a common clock repair. Always handle clock movements with care.

1. **Prepare the Clock:** Carefully stop the pendulum and remove it from the clock. If possible, remove the clock movement from its case to gain better access to the suspension spring.
2. **Identify the Old Spring:** The suspension spring is typically located at the top of the clock movement, where the pendulum rod attaches. It is a thin, flat piece of metal.
3. **Remove the Old Spring:** The old spring is usually held in place by a suspension post and a pin or wedge. Carefully

remove any retaining pins or wedges. Gently slide the old spring out of its slot. Note its orientation for correct installation of the new spring.

4. **Install the New Spring:** Take one of the new WYZBEN suspension springs. Carefully slide the new spring into the slot, ensuring it is properly seated and oriented. The top of the spring typically has a small pin or hook that engages with the suspension post, while the bottom has a hole for the pendulum leader.
5. **Secure the Spring:** Reinsert any retaining pins or wedges to secure the new spring in place. Ensure it is firm and does not wobble.
6. **Reattach Pendulum:** Carefully reattach the pendulum rod to the bottom of the new suspension spring. Ensure it hangs freely and is not obstructed.
7. **Test the Clock:** Gently start the pendulum swinging. Observe its motion. The clock should begin to tick if the movement is otherwise functional.



Image 4.1: A closer view of three suspension springs, highlighting the top pin and bottom hole for attachment.

5. OPERATING INSTRUCTIONS

As a replacement component, the WYZBEN Suspension Spring does not have operational controls. Its function is to enable the proper operation of your clock's pendulum. Once correctly installed, the clock's normal operating procedures

should be followed.

6. MAINTENANCE

The suspension spring itself requires minimal maintenance. However, proper care of your clock movement will prolong the life of all its components, including the spring.

- **Handle with Care:** Avoid bending or twisting the suspension spring during installation or handling, as this can damage it and affect pendulum accuracy.
- **Keep Clean:** Ensure the area around the suspension spring and pendulum is free from dust and debris, which can impede the pendulum's swing.
- **Professional Servicing:** For comprehensive clock maintenance, including cleaning and oiling of the movement, it is recommended to consult a qualified clock repair professional every few years.

7. TROUBLESHOOTING

If your clock does not operate correctly after replacing the suspension spring, consider the following:

- **Pendulum Not Swinging:**
 - Ensure the pendulum is securely attached to the suspension spring.
 - Verify the suspension spring is correctly seated and not bent or obstructed.
 - Check if the pendulum is striking the sides of the clock case or other components.
- **Clock Not Ticking:**
 - Confirm the clock is wound.
 - Listen for the "tick-tock" sound. If it's uneven, the clock may be "out of beat." This is an adjustment typically made by a professional.
 - Ensure no other parts of the clock movement are jammed or require lubrication.

If issues persist, it is advisable to seek assistance from a professional clock repair technician.

8. WARRANTY AND SUPPORT

This product is a generic aftermarket replacement part and is not covered under any OEM manufacturer's warranty. For any issues or questions regarding the WYZBEN Suspension Springs, please contact the seller directly through the platform where the purchase was made. They can provide assistance with product-specific concerns.

