

Maupvit 2-Drawers

Maupvit Shoe Storage Cabinet with 2 Flip Louvered Doors (Model: 2-Drawers)

Instruction Manual

1. INTRODUCTION

Thank you for choosing the Maupvit Shoe Storage Cabinet. This cabinet is designed to provide an organized and space-saving solution for shoe storage in various home environments such as entryways, hallways, living rooms, or porches. This manual contains important information regarding the assembly, operation, and maintenance of your new cabinet. Please read it thoroughly before beginning assembly and retain it for future reference.



Image 1.1: Maupvit Shoe Storage Cabinet (2-Drawers) in a home setting, showing both open and closed configurations.

2. PRODUCT FEATURES

- **Space-Saving Design:** Features 2 flip louvered doors, allowing for placement in narrow spaces while keeping shoes out of sight and protected from dust.
- **Ventilated Louvered Doors:** The louvered design promotes air circulation, helping to prevent odors.
- **Adjustable Storage Capacity:** Each drawer contains two layers of storage space. Panels can be adjusted or removed to accommodate various shoe heights and sizes, including flats, mid-boots, or heels.
- **Top Surface with Fence:** The top surface includes a protective fence, ideal for placing potted plants, ornaments, socks, or keys without concern of items falling.
- **Durable Construction:** Constructed with 0.4-inch thickened louvers for strong load-bearing capacity and resistance to deformation. Features white flip drawer hinges designed for long service life and black metal handles for comfortable use and scratch prevention.
- **Safety Features:** Includes an anti-tipping device for secure wall mounting, enhancing stability and protecting against accidental tipping.
- **Environmentally Friendly Materials:** Utilizes formaldehyde-free water-based environmentally friendly resin paint.



Image 2.1: Key features of the cabinet, highlighting the white paint, durable hinges, top fence, and metal support legs.

3. SAFETY INFORMATION

WARNING: To prevent tipping and ensure safety, especially for children, it is mandatory to secure the cabinet to the wall using the provided anti-tipping device.

- Always follow the assembly instructions carefully.
- Do not allow children to climb on or play with the cabinet.
- Ensure the cabinet is placed on a level surface before securing it to the wall.
- Do not overload the drawers or top surface beyond recommended weight limits.

Prevent Tip-over Incidents Ensuring your family's Safety

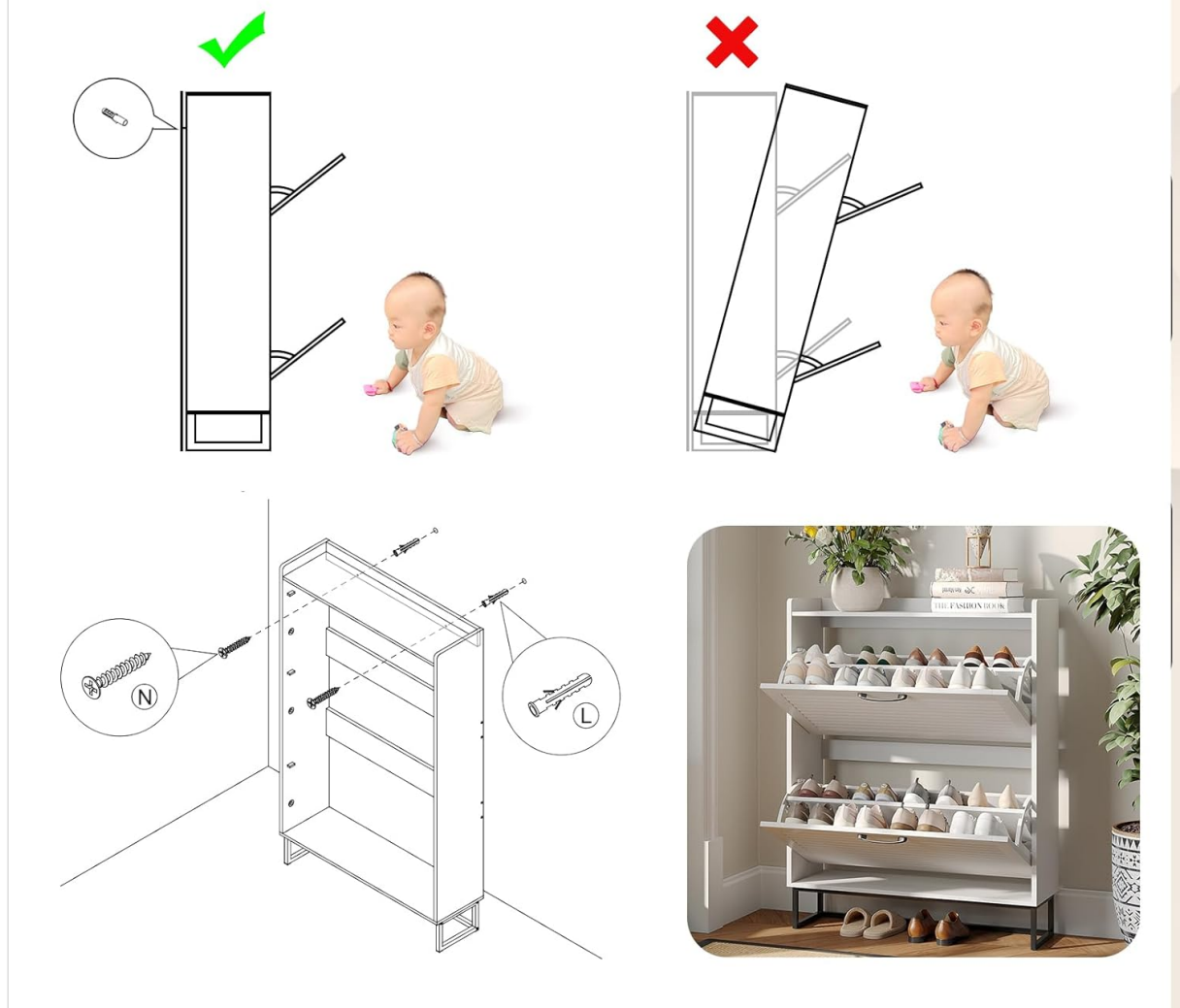


Image 3.1: Visual guide for installing the anti-tipping device to ensure cabinet stability and safety.

4. SETUP AND ASSEMBLY

Assembly is required for this product. Please ensure all components are present before beginning. Refer to the included assembly instructions for detailed, step-by-step guidance. It is recommended to have two people for assembly to ensure ease and safety.

4.1 Unpacking and Component Check

Carefully unpack all parts and lay them out on a clean, soft surface to prevent scratches. Verify that all hardware and panels listed in the assembly manual are present. If any parts are missing or damaged, please contact customer service.

4.2 Assembly Steps

Follow the numbered steps in the provided assembly instruction booklet. Pay close attention to the diagrams for correct orientation of parts and hardware. Ensure all screws and fasteners are tightened securely, but do not overtighten.

4.3 Wall Mounting

Once assembled, position the cabinet in its desired location. Use the anti-tipping device to securely fasten

the cabinet to a wall stud. This step is crucial for stability and safety.

5. OPERATING INSTRUCTIONS

5.1 Opening and Closing Drawers

To open a drawer, gently pull the black metal handle. The louvered front will flip open, revealing the shoe storage compartments. To close, push the louvered front back into the cabinet until it is flush with the cabinet frame.



Image 5.1: The cabinet demonstrating the flip-open mechanism of the drawers.

5.2 Adjusting Shelf Height

Each flip drawer contains internal panels that can be adjusted or removed. To adjust, carefully lift the panel from its current grooves and reposition it into a different set of grooves to accommodate taller or shorter footwear. For very tall items like boots, the panel can be completely removed to create a single, larger compartment.

LARGE STORAGE SPACE

The position of the partitions can be adjusted to accommodate shoes of different heights. It can also be taken out directly to become a large drawer.

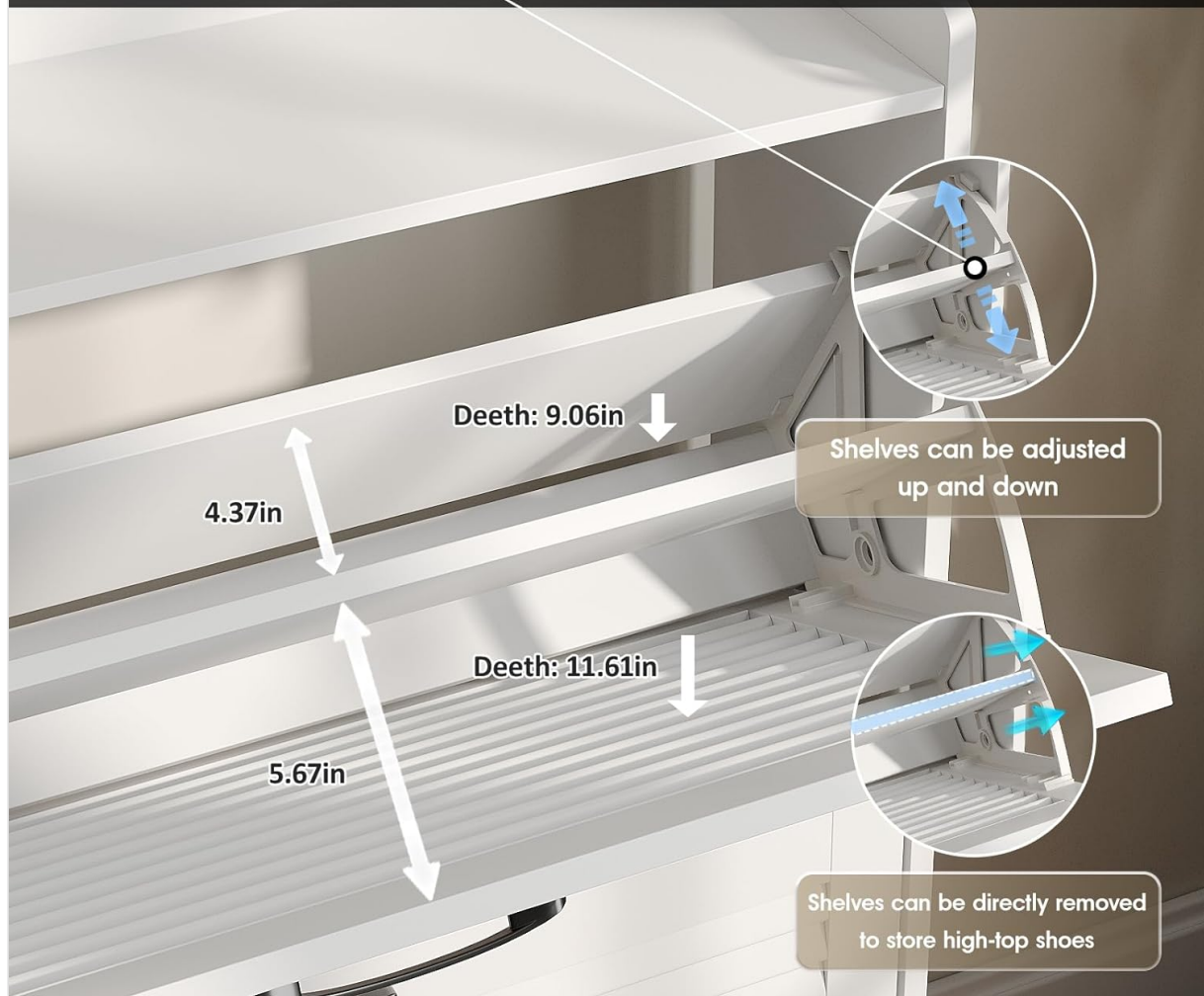


Image 5.2: Illustration of how internal shelves can be adjusted or removed to fit various shoe sizes.

6. MAINTENANCE

- **Cleaning:** Wipe the cabinet surfaces with a soft, damp cloth. Avoid using harsh chemicals or abrasive cleaners, as these may damage the finish.
- **Dusting:** Regularly dust the cabinet to maintain its appearance.
- **Hardware Check:** Periodically check all screws and fasteners to ensure they remain tight. Retighten if necessary.
- **Ventilation:** The louvered doors are designed for ventilation. Ensure they are not blocked to allow air circulation.

7. TROUBLESHOOTING

Problem	Possible Cause	Solution
Drawers do not open/close smoothly.	Misaligned hinges or obstruction.	Check hinge alignment and ensure no items are blocking the drawer mechanism. Lubricate hinges if needed.

Problem	Possible Cause	Solution
Cabinet feels unstable.	Not properly wall-mounted or uneven surface.	Ensure the anti-tipping device is securely installed into a wall stud. Verify the cabinet is on a level surface.
Odor inside the cabinet.	Lack of ventilation or damp shoes.	Ensure louvered doors are not obstructed. Allow shoes to dry before storing. Consider using shoe deodorizers.

8. SPECIFICATIONS

Brand:	Maupvit
Model:	2-Drawers
Color:	White
Product Dimensions (D x W x H):	9.45"D x 31.5"W x 40.16"H
Item Weight:	46.8 pounds (21.25 Kilograms)
Material:	Wood (Top Material, Back Material), Metal (Frame Material, Handle Material, Legs)
Mounting Type:	Floor Mount (with wall-mount anti-tipping device)
Door Style:	Louvered, Flip-Down
Number of Compartments:	2 (each with 2 layers of storage)
Assembly Required:	Yes

SIZE

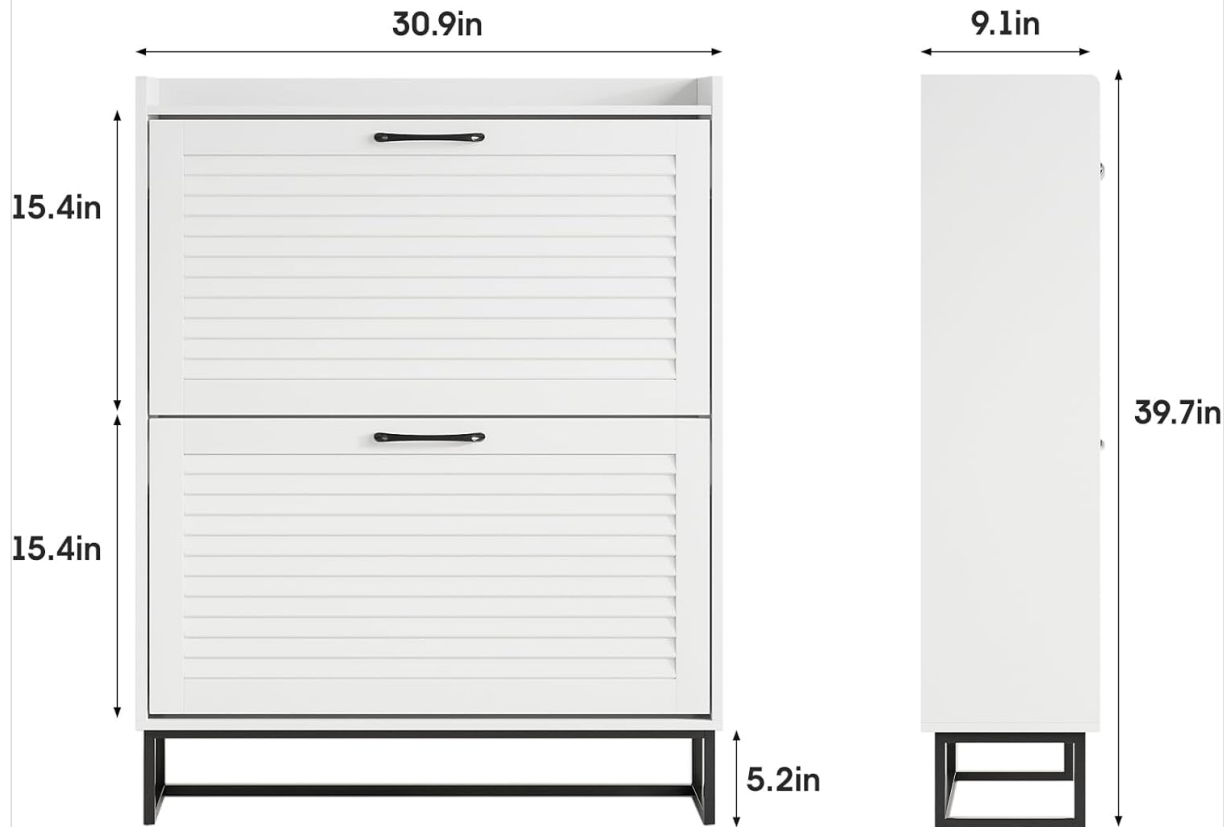


Image 8.1: Detailed dimensions of the Maupvit Shoe Storage Cabinet.

9. WARRANTY AND SUPPORT

Maupvit offers a commitment to quality, including a 10-year warranty and lifetime maintenance for this product. For any questions, concerns, or assistance with your Maupvit Shoe Storage Cabinet, please contact our customer service team.

Customer Service Email: TENNTQU-Service@hotmail.com