

ONNAIS W007B

ONNAIS RV Door Lock Replacement User Manual

Model: W007B

INTRODUCTION

This user manual provides comprehensive instructions for the installation, operation, maintenance, and troubleshooting of your ONNAIS RV Door Lock Replacement. Please read this manual thoroughly before installation and use to ensure proper function and safety.

The ONNAIS RV Door Lock offers advanced security features including a 10-digit keypad, dual-door remote control, and a backup mechanical key, designed for secure and convenient travel.

PRODUCT FEATURES

- **Durable and Secure Material:** Built with all-metal construction, waterproof, and resistant to break-ins.
- **Three Unlocking Methods:** FOB remote access, keypad entry, and a hidden mechanical key for backup.
- **Dual Door Control FOB:** Control both front and rear RV doors with a single fob, effective over 100 feet. Includes 2 remote control fobs.
- **Peek-Proof Keypad:** Allows random digits before and after the correct password (up to 32 digits total) for enhanced security.
- **Perfectly Sized for RVs:** Fits standard camper openings (3.75" x 2.75" x 1.5") and has an exterior size of 6.1" x 4.7", suitable for most RV doors with right-side hinges.
- **Child Safety Lock:** Disables settings buttons to prevent accidental adjustments by children.

PACKAGE CONTENTS

Please verify that all components are present before beginning installation:

- ONNAIS RV Door Lock Body
- 2 x FOB Remote Controls
- 2 x Mechanical Keys
- Installation Tools (5 screws, screwdriver, battery removal tool)

- Strike Plate
- User Manual (this document)

Note: Batteries (2 Lithium Ion AA) are not supplied and must be purchased separately.



Image: The ONNAIS RV Door Lock unit, showing the keypad and handle, alongside two remote key fobs, one with a visible mechanical key.

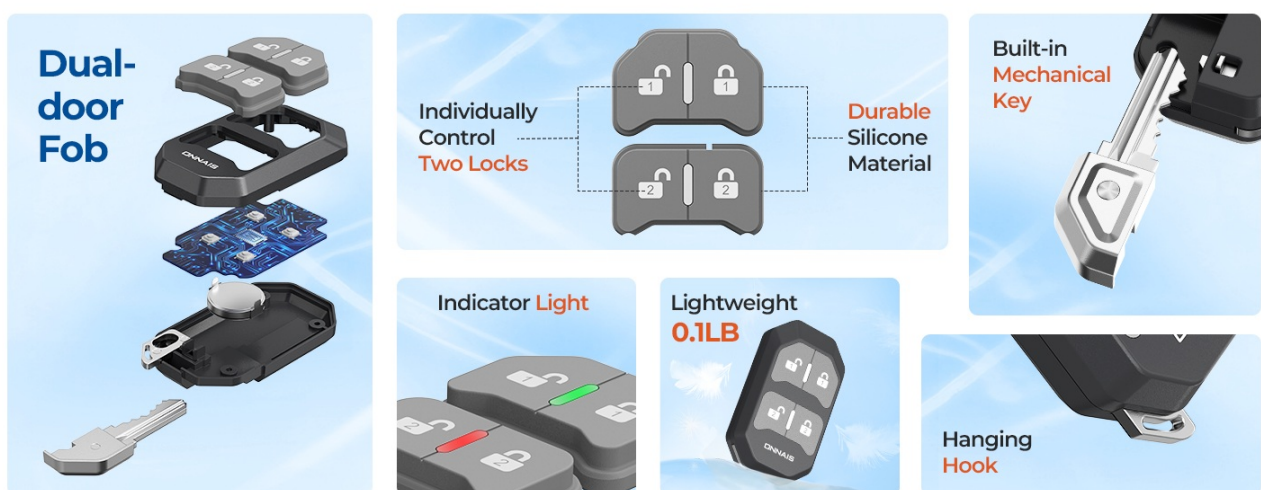


Image: An exploded view diagram illustrating all components included in the ONNAIS RV Door Lock package, such as the lock body, fobs, keys, screws, and tools.

INSTALLATION GUIDE

1. Pre-Installation Check

Ensure your RV door meets the following specifications:

- Standard camper opening: 3.75" x 2.75" x 1.5"
- Exterior lock size: 6.1" x 4.7"
- Suitable for RV doors with right-side hinges.

Fits Most RVs Seamlessly



Image: A diagram illustrating the lock's dimensions (lock size, door thickness, hole cutout) and showing various types of RVs and trailers it is compatible with, including motorhomes, travel trailers, and toy haulers.



Surviving in thousands of times' attacks.



Image: An illustration demonstrating that the ONNAIS RV Door Lock is designed to fit RV doors with right-side hinges, showing several different RV models.

2. Removing the Old Lock

1. Using a screwdriver, remove the screws securing the interior and exterior parts of your existing RV door lock.
2. Carefully remove both parts of the old lock from the door.
3. Remove the old strike plate from the door frame.

3. Installing the New Lock

1. Insert the new lock body into the prepared opening in the RV door. Ensure the deadbolt mechanism aligns correctly.
2. Secure the lock body with the provided screws.
3. Install the new strike plate on the door frame, aligning it with the deadbolt.



Image: An exploded diagram showcasing the secure and reliable mechanical lock structure, highlighting components like the automatic zinc alloy latch and strong aviation aluminum construction.

OPERATING INSTRUCTIONS

1. Battery Installation

The lock requires 2 Lithium Ion AA batteries (not included). Use the provided battery removal tool to open the battery compartment on the interior side of the lock. Insert batteries according to polarity markings and close the

compartment.

2. Setting Passcodes

The keypad allows for up to 32 digits, incorporating a peek-proof system. You can add random digits before and after your actual password.

1. Press the 'SET' button on the interior side of the lock.
2. Enter your desired password (e.g., 12345).
3. Press the 'SET' button again to confirm.
4. To use the peek-proof feature, you can enter random numbers before and after your password (e.g., 73225613B**12345**22157878461). The lock will recognize the embedded correct password.



Image: A visual explanation of the peek-proof code system, showing how random digits can be added around the correct password, and demonstrating one-touch locking for convenience.

3. Using the FOB Remote Control

The two included FOB remote controls can control both front and rear RV doors.

1. To pair a FOB, press the 'SET' button on the interior side of the lock.
2. Press any button on the FOB remote control. The lock will beep to confirm pairing.
3. Use the lock/unlock buttons on the FOB to control the door. The FOB has an extended range of over 100 feet.

Dual Lock Control with a Single Fob



Remote control
distance

100 feet



Reaction
rate

1s



Continuous
use

5 years



Image: A person's hand holding the ONNAIS remote fob, demonstrating its use to control an RV door from a distance, highlighting the dual lock control feature.

Dual-door Fob with Hidden Physical Key Always Secure Entry



Lightweight
0.1LB

Keychain
-Friendly



Hidden
Physical
Key

Image: A detailed view of the dual-door fob, emphasizing its lightweight design, keychain-friendly nature, and the hidden physical key mechanism for secure entry.



Fit RV Doors With Right-side Hinges



Image: An intricate diagram of the dual-door fob, detailing its internal components, durable silicone material, indicator light, lightweight design (0.1LB), and integrated hanging hook, along with its ability to individually control two locks.



Image: Two scenarios demonstrating the dual lock control feature, where a single fob can operate locks on two separate RVs, highlighting its versatility.

4. Using the Mechanical Key

The mechanical key serves as a backup in case of battery depletion or electronic system failure. The key is integrated into the FOB remote control.

1. Slide the release button on the FOB to extract the mechanical key.
2. Insert the key into the keyhole on the lock and turn to unlock.

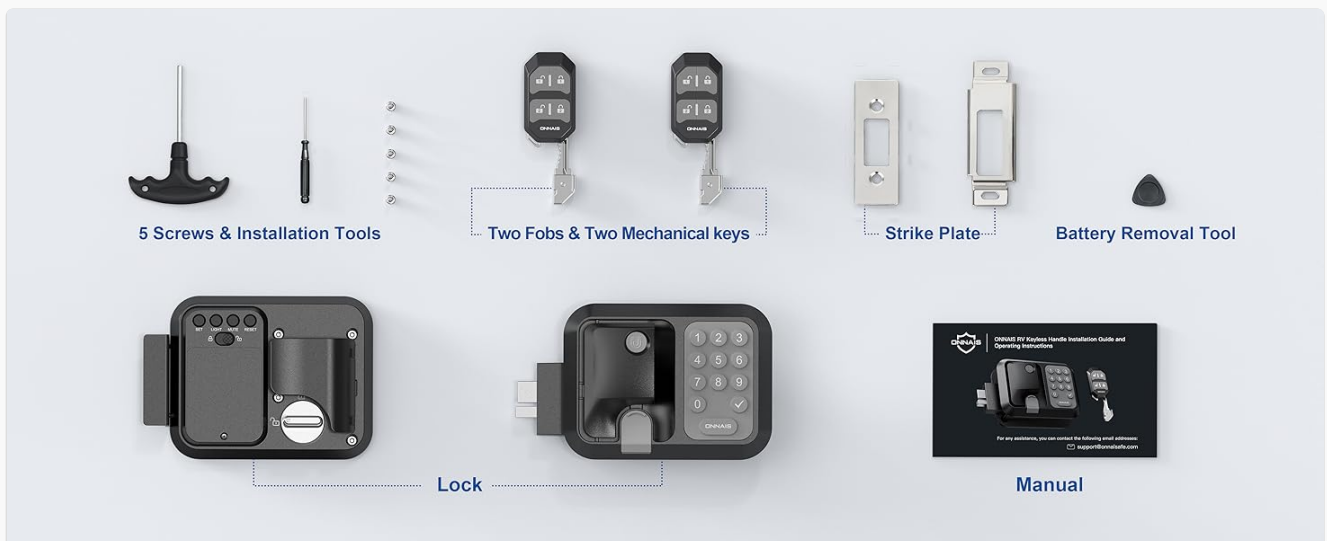


Image: A hand inserting the mechanical backup key into the RV door lock, demonstrating the manual override option.

5. Child Safety Lock

To activate the child safety mode, locate the child safety switch on the interior side of the lock. Slide the switch to the 'locked' position to disable the settings buttons, preventing accidental adjustments.

Child Lock Boosts Security, Preventing Accidental Changes

Child Lock



Image: A child reaching for the RV door lock, with an inset showing a close-up of the child safety lock switch (labeled SET, LIGHT, MUTE, RESET) in the locked position, indicating that it prevents accidental changes.

MAINTENANCE

- **Battery Replacement:** Replace batteries when the low battery indicator activates or when the lock's performance degrades. Always use 2 Lithium Ion AA batteries for optimal performance, especially in cold weather.
- **Cleaning:** Wipe the exterior of the lock with a soft, damp cloth. Avoid abrasive cleaners or solvents that could damage the finish or electronic components.
- **Lubrication:** Periodically lubricate the mechanical parts of the deadbolt and latch with a silicone-based lubricant to ensure smooth operation.
- **Regular Checks:** Periodically check all screws for tightness and ensure the lock operates smoothly.

TROUBLESHOOTING

Problem	Possible Cause	Solution
Lock does not respond to keypad or FOB.	Low or dead batteries; FOB not paired; electronic malfunction.	Replace batteries. Re-pair FOB. Use mechanical key. Contact support if issue persists.
Keypad input is inconsistent.	Weak batteries; dirty keypad; environmental interference.	Replace batteries. Clean keypad. Ensure clear line of sight for FOB.
Mechanical key does not work smoothly.	Lack of lubrication; debris in keyhole.	Apply silicone lubricant to the keyhole. Clear any debris.
Child safety lock cannot be disengaged.	Switch is stuck or damaged.	Ensure the switch is fully in the 'unlocked' position. Do not force. Contact support.

SPECIFICATIONS

- **Brand:** ONNAIS
- **Model Name:** ONNAIS RV Door Lock Guard Pro
- **Model Number:** W007B
- **Lock Type:** Keypad
- **Material:** Metal (Automatic Zinc Alloy Latch, Strong Aviation Aluminum)
- **Color:** Black
- **Item Dimensions (L x W x H):** 7.87 x 4.72 x 4.52 inches
- **Exterior Lock Size:** 6.1" x 4.7"
- **Standard Camper Opening:** 3.75" x 2.75" x 1.5"
- **Item Weight:** 3.76 pounds (1.71 Kilograms)
- **Power Source:** 2 Lithium Ion AA batteries (not included)
- **Special Features:** Anti-Peeping Password, Passcode Unlock, Child Safety Lock
- **Controller Type:** FOB, Keypad, Mechanical knob
- **FOB Remote Control Range:** Over 100 feet
- **Keypad Digits:** Up to 32 digits (including random digits)
- **Certifications:** ANSI/BHMA Grade 2 Certification
- **Waterproof Rating:** IPX5
- **UPC:** 860012389810



Image: An infographic highlighting the robust features of the ONNAIS RV Door Lock, including its ability to withstand attacks, IPX5 waterproof rating, durable silicone keyboard, strong aviation aluminum, ANSI/BHMA Grade 2 certification, and quick set/reset capabilities.

WARRANTY AND SUPPORT

For warranty information and technical support, please refer to the contact details provided on the product packaging or visit the official ONNAIS website. Keep your purchase receipt as proof of purchase.

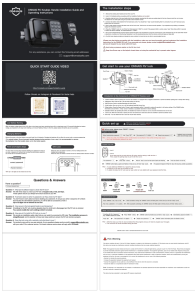



Customer Service: For any questions or assistance, please contact ONNAIS customer support. Contact information can typically be found on the product packaging or the manufacturer's official website.

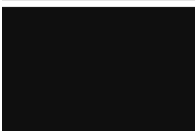
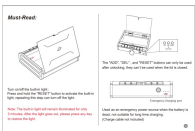
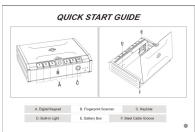
IMPORTANT SAFETY INFORMATION

- Do not attempt to disassemble or repair the lock yourself. This may void the warranty and could lead to malfunction.
- Ensure the mechanical key is always accessible outside the RV in case of electronic failure or dead batteries.
- Keep remote fobs and mechanical keys in a secure location to prevent unauthorized access.
- Avoid exposing the lock to extreme temperatures or harsh chemicals.

© 2025 ONNAIS. All rights reserved.

Related Documents - W007B

	<p>ONNAIS RV Keyless Handle Lock: Installation Guide & Operating Instructions</p> <p>Comprehensive guide for installing and operating the ONNAIS RV Keyless Handle Lock. Learn setup, programming, troubleshooting, and key features for your RV.</p>
	<p>ONNAIS RV Keyless Handle Installation and Operating Instructions</p> <p>Comprehensive guide for installing and operating the ONNAIS RV Keyless Handle, including setup, programming, and troubleshooting.</p>
	<p>ONNAIS Biometric Gun Safe Quick Start Guide</p> <p>A quick start guide for the ONNAIS Biometric Gun Safe, covering setup, fingerprint and password addition, and troubleshooting.</p>
	<p>ONNAIS HX-011 Quick Start Guide: Biometric Safe Setup and Operation</p> <p>Get started with your ONNAIS HX-011 biometric safe. This quick start guide covers charging, unlocking, registration of passwords, fingerprints, and RFID cards, plus troubleshooting and FAQs for optimal security.</p>



[ONNAIS Iron PRO Biometric Fingerprint Gun Safe Quick Start Guide](#)

This guide provides quick start instructions for the ONNAIS Iron PRO Biometric Fingerprint Gun Safe. Learn how to set up your safe, install batteries, program digital passwords and fingerprints, and find answers to common questions.



[ONNAIS HX-010 Gun Safe Quick Start Guide](#)

Concise and SEO-optimized HTML guide for the ONNAIS HX-010 Gun Safe, covering setup, operation, and troubleshooting.