

Manuals+

[Q & A](#) | [Deep Search](#) | [Upload](#)

[manuals.plus](#) /

› [Yaheetech](#) /

› [Yaheetech 5-Tier Heavy-Duty Standing Shelf Unit Instruction Manual \(Model YT-00139034#\)](#)

Yaheetech YT-00139034

Yaheetech 5-Tier Heavy-Duty Standing Shelf Unit Instruction Manual

Model: YT-00139034#

Brand: Yaheetech

1. INTRODUCTION

This manual provides detailed instructions for the assembly, usage, and maintenance of your Yaheetech 5-Tier Heavy-Duty Standing Shelf Unit. Designed for versatile storage, this unit is suitable for various environments including garages, offices, kitchens, workshops, and warehouses. Please read this manual thoroughly before assembly and use to ensure safe and correct operation.





Image 1.1: The Yaheetech 5-Tier Heavy-Duty Standing Shelf Unit in blue, showcasing its five adjustable shelves and sturdy construction.

2. SAFETY INFORMATION

Adhering to these safety guidelines is crucial for preventing injury and damage to the product.

- **Do not overload:** The maximum weight capacity per shelf is 386 lb (175 kg). The total maximum weight capacity for the entire unit is 1925 lb (873 kg). Exceeding these limits can cause structural failure.
- **Proper Assembly:** Ensure all components are correctly assembled and secured according to the instructions. Incorrect assembly can compromise stability.
- **Stable Placement:** Place the shelf unit on a flat, level, and stable surface. Uneven surfaces can lead to tipping.
- **Anti-skid Pads:** Utilize the provided anti-skid rubber pads to enhance stability and protect your flooring from scratches.
- **Children and Pets:** Keep children and pets away from the unit during assembly. Do not allow them to climb on the assembled unit.
- **Tools:** A rubber mallet (not included) is highly recommended for assembly to prevent damage to components.

3. PACKAGE CONTENTS

Verify that all components are present before beginning assembly. If any parts are missing or damaged,

contact customer support.

- Vertical Posts (Uprights)
- Horizontal Beams (Long and Short)
- MDF Boards (5 pieces)
- Fixed Connection Plates
- Anti-slip Footpads
- Gloves (for assembly)
- Instruction Manual

4. ASSEMBLY INSTRUCTIONS

The boltless design allows for straightforward assembly. Two people are recommended for easier installation. A rubber mallet (not included) will be helpful.

1. **Prepare Components:** Lay out all parts on a clean, flat surface. Wear the provided gloves to protect your hands.
2. **Assemble Vertical Posts:** Connect the vertical posts using the fixed connection plates if assembling a taller unit. Ensure they are securely interlocked.
3. **Attach Beams:** Connect the horizontal beams to the vertical posts. The beams feature tabs that slot into the post openings. Use a rubber mallet to gently tap them into place until fully seated.
4. **Form Shelf Levels:** Repeat step 3 for all four sides of each shelf level. Ensure the beams are level and securely attached before proceeding.
5. **Insert MDF Boards:** Once a shelf frame is complete, place an MDF board onto the assembled beams. Ensure it sits flush within the frame.
6. **Repeat for All Tiers:** Continue assembling the remaining shelf tiers, adjusting the height of each tier as desired before inserting the MDF boards.
7. **Attach Footpads:** Secure the anti-slip footpads to the bottom of the vertical posts.

10-min Easy to Assemble

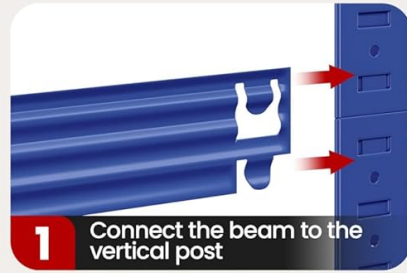
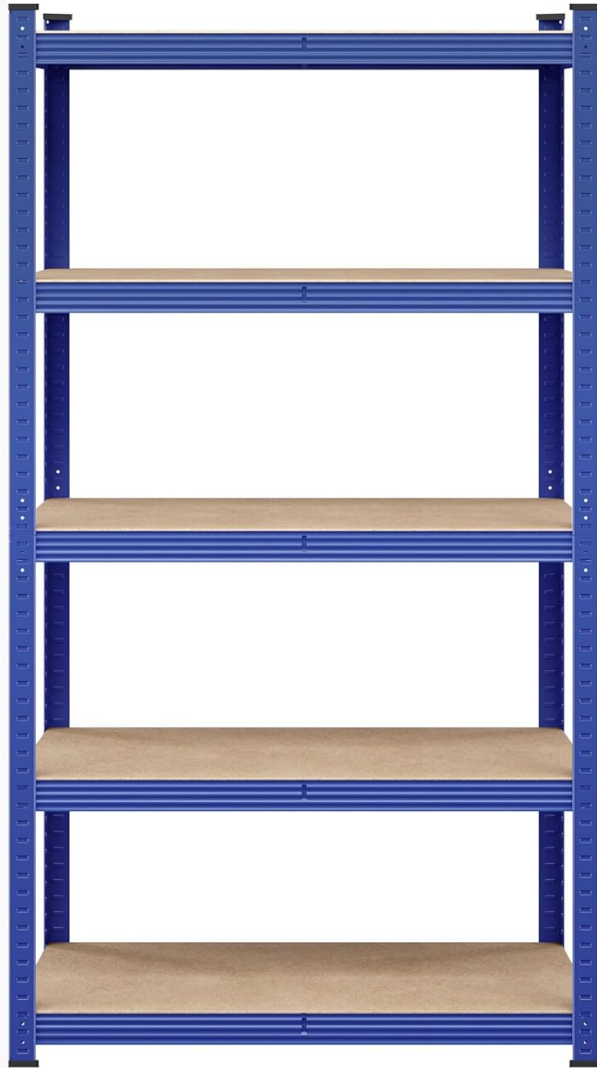


Image 4.1: Visual guide for assembly, showing connecting beams to posts, snapping crossbars, placing wooden boards, and attaching non-slip footpads.



Image 4.2: Close-up view of key features including durable protective surface, adjustable height mechanism, fixed connection plate, easy boltless assembly, durable medium density fiberboard, and anti-slip footpads.

5. USAGE AND CONFIGURATION

The Yaheetech shelf unit offers flexible configuration options to suit your storage needs.

5.1 Adjustable Shelves

The five shelves are fully adjustable. You can customize the height of each shelf to accommodate items of various sizes. To adjust, simply detach the beams from the vertical posts, reposition them to the desired height, and re-secure them.

5.2 Changeable Design

Beyond a single tall unit, this rack can be configured into different forms, such as two shorter, separate units or an L-shaped workbench. This adaptability maximizes its utility in diverse spaces.

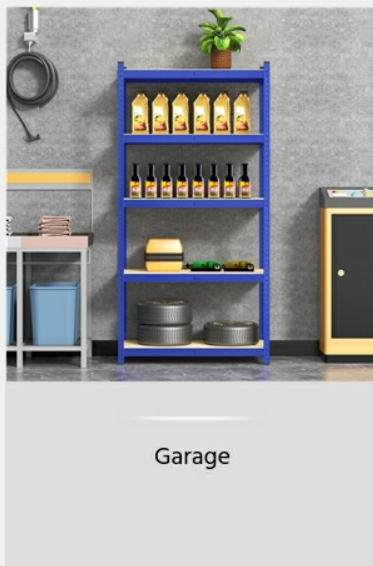


Image 5.1: Examples of different shelf configurations, including a tall 5-tier unit, two shorter 2-tier units, and an L-shaped setup.

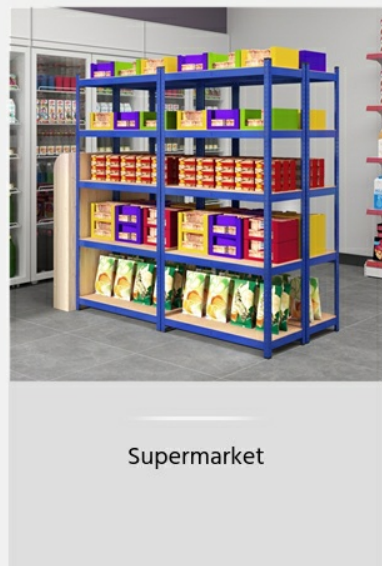
MULTIPLE USES



Kitchen



Garage



Supermarket

Image 5.2: Demonstrations of the shelf unit's versatility in different environments: a kitchen for pantry storage, a garage for tools and supplies, and a supermarket for product display.



Image 5.3: A blue Yaheetech shelf unit neatly organized with various storage bins, tools, and tires in a garage setting.



Image 5.4: A blue Yaheetech shelf unit used in a kitchen, holding various kitchenware, appliances, and food items.

6. MAINTENANCE

To ensure the longevity and appearance of your shelf unit, follow these simple maintenance steps:

- **Cleaning:** Wipe the surfaces with a dry cloth to remove dust and debris. Avoid using abrasive cleaners or harsh chemicals, which can damage the painted finish and MDF boards.
- **Inspection:** Periodically check all connections to ensure they remain secure. Re-tap any loose beams with a rubber mallet if necessary.
- **Moisture:** While the MDF boards are durable, prolonged exposure to excessive moisture should be avoided to prevent warping or damage.

7. TROUBLESHOOTING

If you encounter issues with your shelf unit, consider the following:

- **Unit Wobbles:** Ensure the unit is placed on a level surface. Check that all beams are fully seated and securely locked into the vertical posts. Verify that the anti-slip footpads are correctly installed.
- **Difficulty Assembling:** If beams are hard to connect, ensure they are aligned correctly with the slots. A rubber mallet can assist in seating them firmly. Do not force components, as this may cause

damage.

- **Shelf Sagging:** Ensure the weight on the shelf does not exceed the individual shelf capacity of 386 lb (175 kg). Distribute weight evenly across the shelf.

8. SPECIFICATIONS

Feature	Detail
Model Name	5-Tier Adjustable Standing Shelf
Model Number	YT-00139034#
Overall Dimensions (L x W x H)	35.5" x 16" x 71" (90.17 cm x 40.64 cm x 180.34 cm)
Number of Shelves	5
Material	Heavy-duty Steel Frame, CARB P2-compliant MDF Boards
Max. Weight Capacity Per Shelf	386 lb (175 kg)
Total Max. Weight Capacity	1925 lb (873 kg)
Item Weight	29.1 lb (13.2 kg)
Assembly Required	Yes (Boltless Assembly)
Special Features	Adjustable Shelves, Changeable Design, Anti-skid Rubber Pads
Care Instructions	Wipe with Dry Cloth



**5-TIER BOLTLESS
STORAGE SHELF**
MAXLOAD: **386LB**
(PER SHELF)

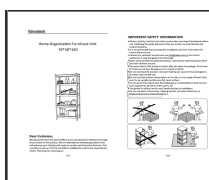
Image 8.1: Diagram illustrating the dimensions of the 5-tier shelf unit: 35.5 inches wide, 16 inches deep, and 71 inches high, with a maximum load of 386 lbs per shelf.

9. WARRANTY AND SUPPORT

For any questions, concerns, or assistance with your Yaheetech 5-Tier Heavy-Duty Standing Shelf Unit, please contact Yaheetech customer support. Refer to your purchase documentation for specific warranty details and contact information.

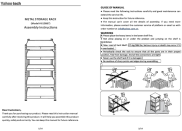
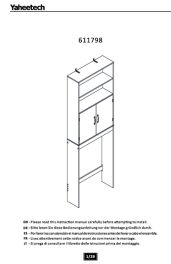


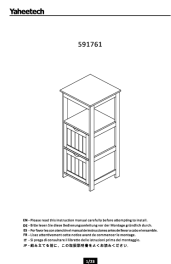
© 2025 Yaheetech. All rights reserved.

Related Documents - YT-00139034



[Yaheetech 5-Tier Home Organization Furniture Unit Assembly Guide](#)

Comprehensive assembly instructions and safety information for the Yaheetech 5-Tier Home Organization Furniture Unit, a versatile shelving solution for home organization.

	<p>Yaheetech Metal Storage Rack Assembly Instructions (Model 610867)</p> <p>Detailed assembly instructions for the Yaheetech Model 610867 Metal Storage Rack. Learn how to safely and correctly assemble your heavy-duty shelving unit with step-by-step guidance and part identification.</p>
	<p>Yaheetech Over The Toilet Storage Cabinet Installation Manual</p> <p>Comprehensive installation guide for the Yaheetech Over The Toilet Storage Cabinet, including multilingual instructions, parts list, and wall anchoring procedures.</p>
	<p>Yaheetech 610877 Shelving Unit Assembly Instructions</p> <p>Comprehensive assembly guide for the Yaheetech 610877 shelving unit. This manual provides step-by-step instructions, a detailed parts list, and safety recommendations for building your storage rack.</p>
	<p>Yaheetech Ergonomic Gaming Chair Installation Guide</p> <p>Step-by-step instructions and parts list for assembling your Yaheetech ergonomic gaming chair, featuring massage lumbar support and adjustable footrest. Ensure proper setup for optimal comfort and performance.</p>
	<p>Yaheetech 591761 Multi-Shelf Storage Unit Assembly Instructions and Care Guide</p> <p>Comprehensive assembly instructions, safety guidelines, and care information for the Yaheetech 591761 multi-shelf storage unit. Includes parts list, step-by-step diagrams, and wall anchoring advice.</p>