

Bomivoi B0D7ZX4GGF

Bomivoi Bluetooth 5.3 Transmitter Receiver User Manual

Model: B0D7ZX4GGF

Brand: Bomivoi

1. INTRODUCTION

The Bomivoi Bluetooth 5.3 Transmitter Receiver is a versatile 2-in-1 wireless audio adapter designed to enhance your audio experience. It allows you to transmit audio from non-Bluetooth devices (like TVs, PCs, or gaming consoles) to Bluetooth headphones or speakers (TX mode), or receive audio from Bluetooth devices (like smartphones or tablets) and play it through non-Bluetooth speakers or home stereo systems (RX mode). Featuring advanced Qualcomm chip technology with aptX Low Latency and aptX HD support, this device ensures high-fidelity, synchronized audio with minimal delay. Its dual connection capability allows for shared listening, making it an ideal solution for various audio setups.

2. SAFETY INFORMATION

Please read and follow these safety guidelines carefully to ensure safe operation and prevent damage to the device or injury:

- Ensure the device is not used near water or in high humidity areas.
- Do not open the device as it may contain parts that could be harmful if mishandled.
- Keep the device away from children.
- Dispose of used batteries properly (if applicable, though this device has no built-in battery).
- Only use the provided cables and a compatible 5V power adapter (not included) for power.
- Avoid extreme temperatures and direct sunlight.

3. PACKAGE CONTENTS

Please check the package for the following items:

- Bomivoi Bluetooth 5.3 Transmitter Receiver Unit
- 3.5mm AUX Audio Cable
- RCA Audio Cable
- USB-A to USB-C Charging Cable

- User Manual (this document)

4. PRODUCT OVERVIEW

Familiarize yourself with the device's components and indicators.

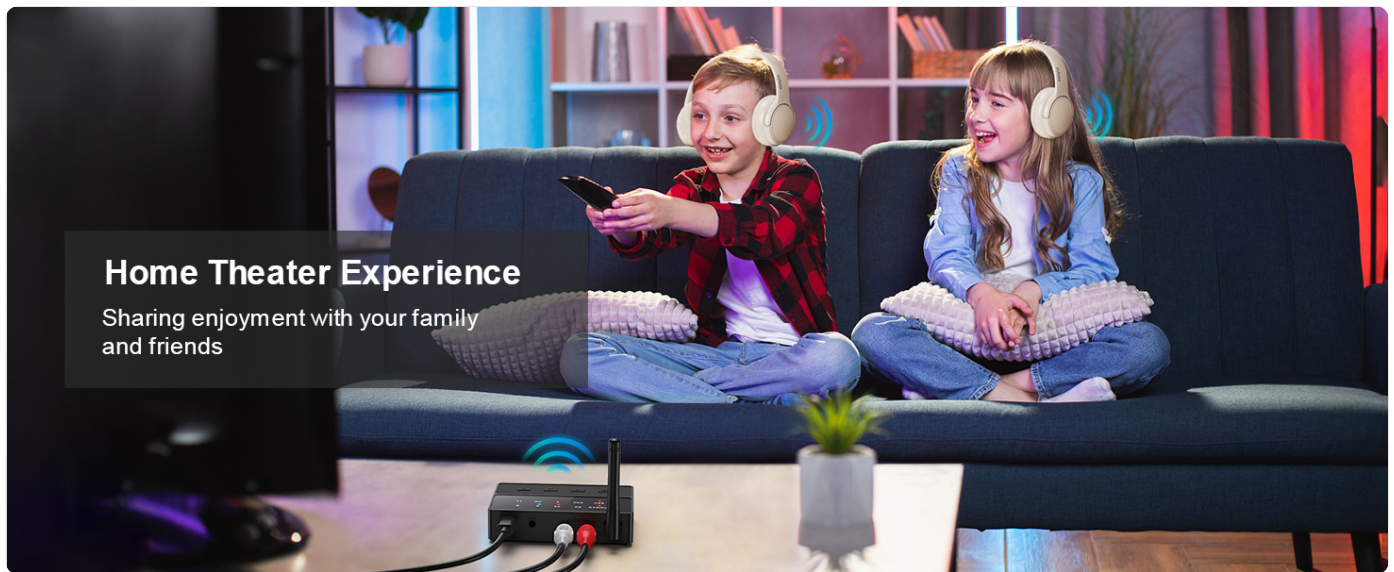


Figure 4.1: Bomivoi Bluetooth Transmitter Receiver with labeled ports and indicators. This image shows the front panel with POWER, RX, TX, A, B, SBC, AAC, X, HD, LL indicators, and control buttons. The rear panel displays the Power interface (USB-C), AUX interface, RCA interface, and Antenna. The TX/RX switch is located on the side.

Indicators and Buttons:

- **POWER Indicator:** Lights up when the device is powered on.
- **RX Indicator:** Lights up when in Receiver mode.
- **TX Indicator:** Lights up when in Transmitter mode.
- **A/B Indicators:** Show connection status for paired devices A and B.
- **SBC/AAC/aptX/HD/LL Indicators:** Display the active audio codec. 'X' indicates aptX support.
- **TX/RX Switch:** Toggles between Transmitter and Receiver modes.
- **Control Buttons:**
 - **Double-click:** Initiates pairing.
 - **Long press 5s:** Clears pairing information.
 - **Click:** Play/Pause, Previous/Next track.
 - **Long press:** Volume Up/Down.

Ports:

- **Type-C Power Port:** For connecting the USB-A to USB-C charging cable to a 5V power adapter.
- **AUX Interface (3.5mm):** For connecting audio devices using a 3.5mm audio cable.
- **RCA Interface (L-AUDIO-R):** For connecting audio devices using an RCA audio cable.
- **Antenna:** For stable Bluetooth signal transmission and reception.

5. KEY FEATURES

- **Qualcomm Chip & aptX Low Latency:** Supports SBC, MP3, AAC, aptX, aptX-LL, and aptX-HD codecs for high-quality, low-latency audio. Note: For aptX Low Latency, your connected Bluetooth device must also support aptX-LL.

- **2-in-1 Bluetooth Transmitter Receiver:** Seamlessly switch between TX (transmit) and RX (receive) modes to suit your audio needs.
- **Dual Connection:** Connect two Bluetooth headphones/speakers simultaneously in TX mode, or two mobile phones in RX mode, for shared audio experiences.
- **Powered by Type-C & Long Range:** Requires continuous power via Type-C. Features Bluetooth 5.3 technology and an external antenna for a stable connection up to 100 feet (30 meters) in open space.
- **Wide Compatibility:** Equipped with RCA and 3.5mm AUX inputs/outputs, compatible with a variety of devices including TVs, PCs, gaming consoles, speakers, and home stereo systems.

6. SETUP AND INITIAL CONNECTION

6.1 Powering the Device

1. Connect the provided USB-A to USB-C charging cable to the Type-C Power Port on the device.
2. Plug the USB-A end of the cable into a 5V USB power adapter (not included) or a USB port on your TV/PC.
3. The POWER indicator light will illuminate, indicating the device is powered on.

6.2 Selecting Mode (TX/RX)

Locate the TX/RX switch on the side of the device and slide it to your desired mode:

- **TX (Transmitter) Mode:** To send audio from a non-Bluetooth device to Bluetooth headphones/speakers. The TX indicator will light up.
- **RX (Receiver) Mode:** To receive audio from a Bluetooth device and play it through wired speakers/stereo. The RX indicator will light up.

7. OPERATING INSTRUCTIONS

7.1 Transmitter (TX) Mode Operation

Use TX mode to stream audio from your TV, PC, or other non-Bluetooth audio sources to Bluetooth headphones or speakers.

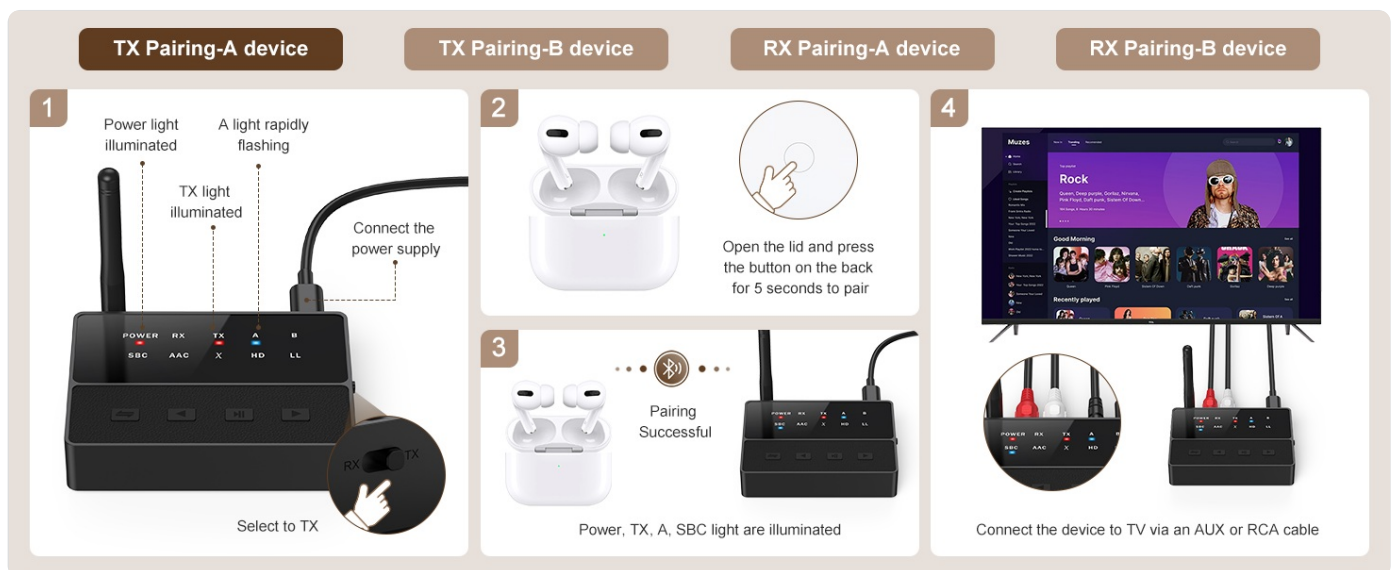


Figure 7.1: TX Mode Setup and Pairing (Device A).

1. **Connect Audio Source:** Connect the Bomivoi device to your non-Bluetooth audio source (e.g., TV, PC) using either the 3.5mm AUX cable or the RCA cable. Ensure you connect to an audio *output* port on your source device. For TVs, set the audio output to PCM mode if using USB power for the transmitter to ensure sound.
2. **Enter Pairing Mode:** Ensure the TX/RX switch is set to TX. The TX light will illuminate, and the A light will rapidly flash,

indicating it's ready to pair.

3. **Pair with Bluetooth Device A:** Put your Bluetooth headphones or speaker (Device A) into pairing mode.
4. **Connect:** The Bomivoi device will automatically search and connect to Device A. Once connected, the A light will become solid, and the corresponding audio codec light (SBC, AAC, aptX, HD, or LL) will illuminate.
5. **Enjoy Audio:** Audio from your source device will now be transmitted to your Bluetooth headphones/speaker.

7.2 Receiver (RX) Mode Operation

Use RX mode to receive audio from your Bluetooth-enabled devices (e.g., smartphone, tablet) and play it through wired speakers or a home stereo system.

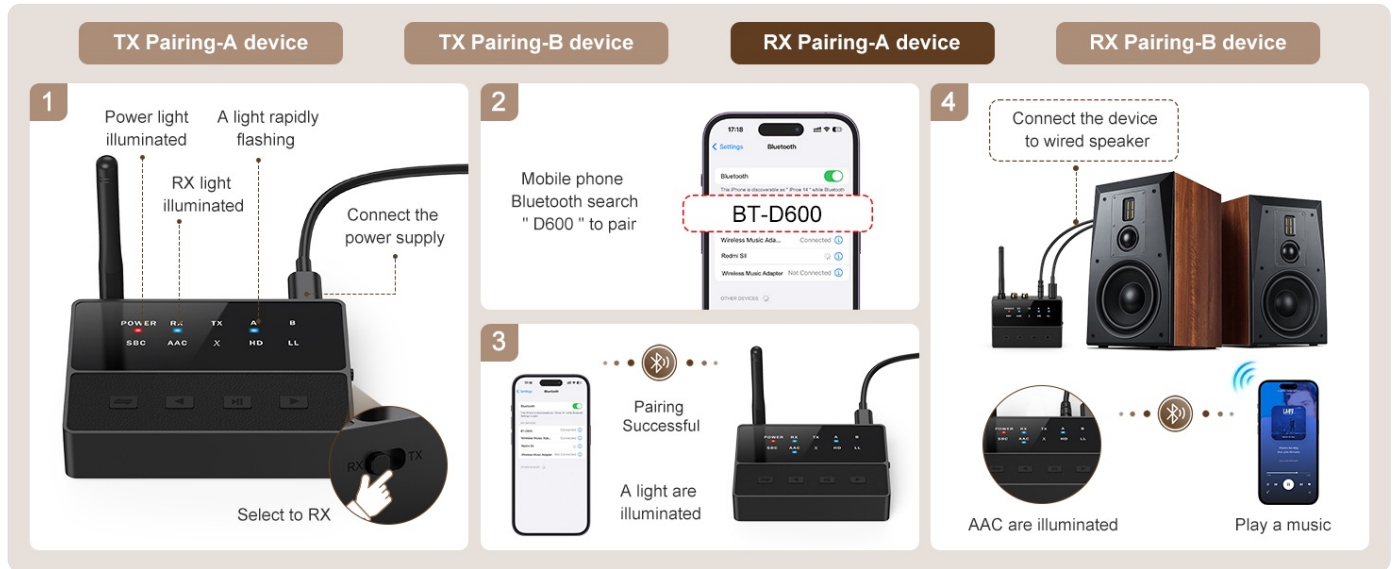


Figure 7.2: RX Mode Setup and Pairing (Device A).

1. **Connect Audio Output:** Connect the Bomivoi device to your wired speaker, home stereo, or headphones using either the 3.5mm AUX cable or the RCA cable.
2. **Enter Pairing Mode:** Ensure the TX/RX switch is set to RX. The RX light will illuminate, and the A light will rapidly flash, indicating it's ready to pair.
3. **Pair with Bluetooth Device A:** On your smartphone, tablet, or other Bluetooth device (Device A), search for Bluetooth devices and select "BT-D600" to pair.
4. **Connect:** Once connected, the A light will become solid, and the corresponding audio codec light (SBC, AAC, aptX, HD, or LL) will illuminate.
5. **Enjoy Audio:** Audio from your Bluetooth device will now be played through your wired speakers/stereo.

7.3 Dual Connection (TX Mode)

The Bomivoi device can connect to two Bluetooth headphones/speakers simultaneously in TX mode.

Long Distance Transmission

Up to 30M/100FT(Open space)



Figure 7.3: Dual Pairing in TX Mode.

1. First, pair Device A following the steps in Section 7.1.
2. Once Device A is connected (A light solid), double-click the pairing button on the Bomivoi device. The B light will rapidly flash.
3. Put your second Bluetooth headphones or speaker (Device B) into pairing mode.
4. The Bomivoi device will automatically search and connect to Device B. Once connected, the B light will become solid.
5. You can now enjoy audio simultaneously through both connected Bluetooth devices.

7.4 Dual Connection (RX Mode)

The Bomivoi device can connect to two Bluetooth source devices (e.g., smartphones) simultaneously in RX mode.

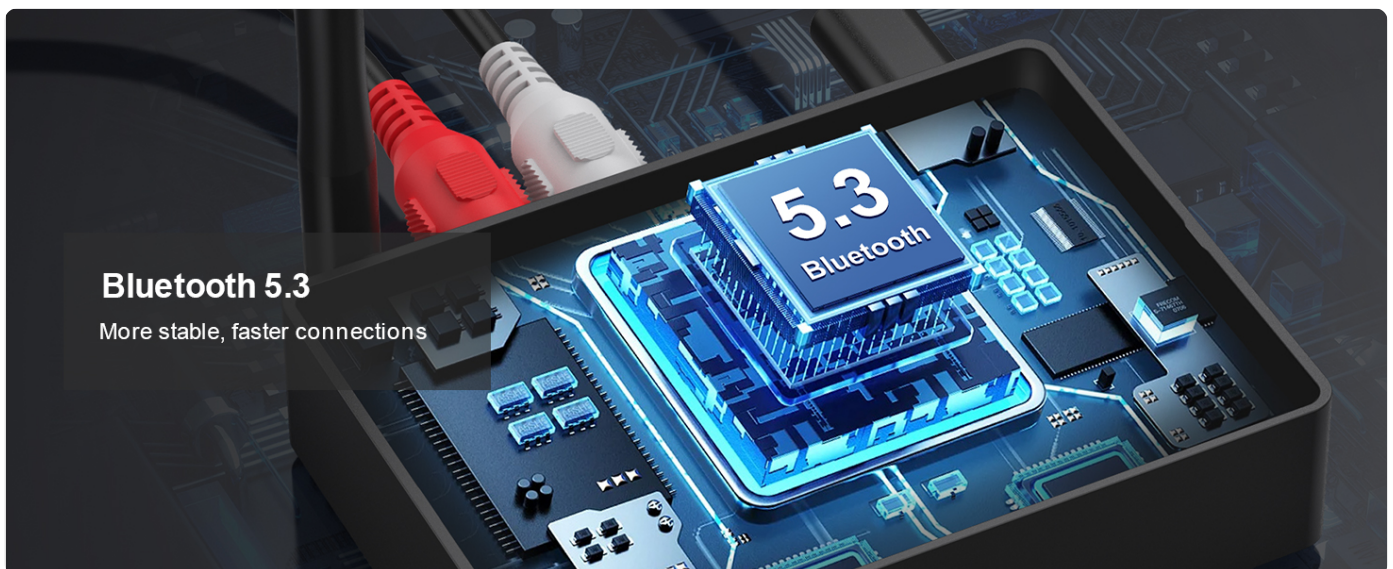


Figure 7.4: Dual Pairing in RX Mode.

1. First, pair Device A following the steps in Section 7.2.
2. Once Device A is connected (A light solid), double-click the pairing button on the Bomivoi device. The B light will rapidly flash.
3. On your second Bluetooth source device (Device B), search for Bluetooth devices and select "BT-D600" to pair.
4. The Bomivoi device will connect to Device B. Once connected, the B light will become solid.
5. You can now switch between playing audio from Device A or Device B. If Device A is playing audio, you must pause it before hitting "Play" on Device B.

7.5 Volume Control

To adjust the volume, long press the Previous (<<) button to decrease volume or the Next (>>) button to increase volume.

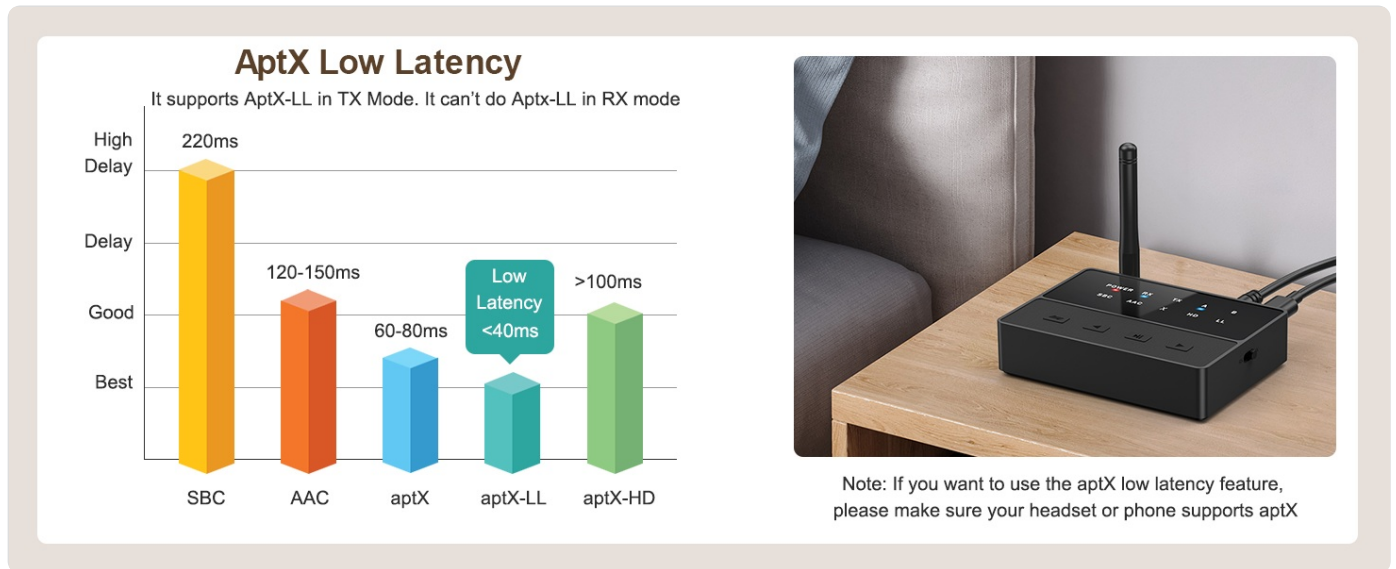


Figure 7.5: Volume Control on the device.

8. SPECIFICATIONS

Detailed technical specifications for the Bomivoi Bluetooth 5.3 Transmitter Receiver.

Feature	Description
Model	B0D7ZX4GGF
Bluetooth Version	5.3
Connectivity Technology	Bluetooth, AUX (3.5mm), RCA
Audio Codecs Supported	SBC, MP3, AAC, aptX, aptX-LL, aptX-HD
Operating Modes	Transmitter (TX), Receiver (RX)
Dual Connection	Supports 2 devices simultaneously in TX/RX mode
Power Source	USB A to USB C (5V adapter required, not included)
Wireless Range	Up to 100 feet (30 meters) in open space
Dimensions	Approx. 4.72 x 3.94 x 1.73 inches
Weight	Approx. 0.2 Kilograms (7.05 ounces)
Manufacturer	Bomivoi

9. MAINTENANCE

To ensure the longevity and optimal performance of your Bomivoi Bluetooth Transmitter Receiver, follow these maintenance guidelines:

- **Cleaning:** Use a soft, dry cloth to wipe the device. Do not use liquid cleaners or aerosols, as they may damage the device.

- **Storage:** When not in use for extended periods, store the device in a cool, dry place away from direct sunlight and extreme temperatures.
- **Handling:** Avoid dropping the device or subjecting it to strong impacts.
- **Ventilation:** Ensure the device has adequate ventilation and is not covered during operation to prevent overheating.

10. TROUBLESHOOTING

If you encounter issues with your Bomivoi Bluetooth Transmitter Receiver, please refer to the following common problems and solutions:

Problem	Possible Cause & Solution
No power/Device not turning on	Ensure the USB-C cable is securely connected to both the device and a working 5V power adapter/USB port. Try a different power source or cable.
Cannot pair with Bluetooth device	<ul style="list-style-type: none"> • Ensure the device is in the correct TX/RX mode. • Make sure your Bluetooth headphones/speaker/phone is in pairing mode. • Clear previous pairing information on the Bomivoi device by long pressing the pairing button for 5 seconds. • Move the devices closer to each other. • Restart both the Bomivoi device and your Bluetooth device.
No sound in TX mode	<ul style="list-style-type: none"> • Verify the audio cable is connected to an <i>output</i> port on your TV/PC, not an input. • For TVs, ensure the audio output setting is set to PCM mode. • Check volume levels on both the Bomivoi device and your connected Bluetooth headphones/speaker. • Ensure the Bluetooth device is successfully paired and connected (solid A/B light).
No sound in RX mode	<ul style="list-style-type: none"> • Verify the audio cable is connected to the input of your wired speaker/stereo. • Check volume levels on both the Bomivoi device and your wired speaker/stereo. • Ensure your Bluetooth source device (phone/tablet) is successfully paired and playing audio.
Audio delay/latency	If experiencing significant delay, ensure both the Bomivoi device and your Bluetooth headphones/speaker support aptX Low Latency (aptX-LL). If not, the audio will default to a higher latency codec.
Short Bluetooth range/Interference	<ul style="list-style-type: none"> • Reduce obstacles between the Bomivoi device and your Bluetooth device. • Avoid placing the device near Wi-Fi routers, microwaves, or other strong signal sources. • Ensure the antenna is properly positioned.

11. WARRANTY AND SUPPORT

Bomivoi products are designed for reliability and performance. This product comes with a standard manufacturer's warranty against defects in materials and workmanship. For specific warranty terms and conditions, please refer to the warranty card

included in your product packaging or contact Bomivoi customer support.

If you have any questions, require technical assistance, or need to report an issue, please contact our customer support team through the following channels:

- **Email:** Refer to your product packaging or the Bomivoi official website for contact details.
- **Online Support:** Visit the Bomivoi official website for FAQs and support resources.

Please have your product model number (B0D7ZX4GGF) and purchase information ready when contacting support.