



Manuals.plus /

› SMARTSTANDARD /

› SMARTSTANDARD Bifold Barn Door 24" x 84" Instruction Manual

## SMARTSTANDARD M-BDM-HB2-TKJ-WH

# SMARTSTANDARD Bifold Barn Door Instruction Manual

Model: M-BDM-HB2-TKJ-WH

### INTRODUCTION

This manual provides detailed instructions for the installation, operation, and maintenance of your SMARTSTANDARD Bifold Barn Door. Please read carefully before beginning installation to ensure proper setup and safe use.

### SAFETY INFORMATION

- Always wear appropriate safety gear, including eye protection and gloves, during installation.
- Ensure the wall structure can adequately support the weight of the door and hardware. Consult a professional if you are unsure about wall integrity.
- Keep children and pets away from the work area during installation to prevent accidents.
- Do not modify the product or use non-approved parts, as this may void the warranty and compromise safety.
- Exercise caution when handling door panels to prevent personal injury.

### PACKAGE CONTENTS

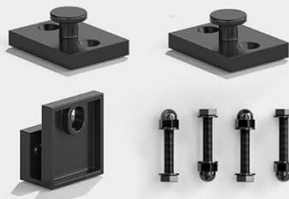
Verify all components are present and undamaged before starting assembly. If any parts are missing or damaged, please contact customer support.

# Packing List

## Complete accessories & Professional Manual



**Bottom Pivot Plate & Sleeve**



**Pulley Base**



**Wall Spacer Kit (x3)**



**Pulley**



**Bi-Fold Door Butt Hinges(x3)**



**Handle**



**Assembled door**



**Professional Manual**



**Rail and Wall Spacer**

This image displays the complete set of accessories and the assembled door panels included in your package.

- Finished MDF Bifold Barn Doors (24"x84")
- 2.33FT Track Kit
- Handle
- Fixed Roller
- Fixed Roller Lock Bracket (x2)
- Bottom Pivot Plate & Sleeve
- Butt Hinges (x3)
- Anti-collision strip
- All necessary hardware for assembly
- Installation Instructions Manual

## SETUP AND INSTALLATION

The SMARTSTANDARD Bifold Barn Door is designed for straightforward assembly with pre-drilled holes and a user-friendly manual. Follow these steps for a smooth setup process.

### Step 1: Prepare the Door Panels

The door panels come pre-finished and pre-drilled. Assemble the bifold butt hinges onto the door panels as shown.



Image showing the installation of bifold door butt hinges.

### Step 2: Install Bottom Pivot Plate

Determine the fixed pivot position on the bottom of the door. Drill a hole and insert the brass sleeve into the designated position.



Image illustrating the installation of the bottom pivot plate.

### Step 3: Mount the Track Kit

Install the track kit above the door opening. Ensure there is at least 6 inches of clearance from the top of the door to the ceiling for proper installation of the rail hole. Attach the fixed and adjustable rollers to the track.



Size Choice	Fit Opening Width	Track length	Weights(LB)
A: 24" * 84"	Max 22"	28"	71
B: 28" * 84"	Max 26"	32"	79
C: 30" * 84"	Max 28"	34"	83
D: 32" * 84"	Max 30"	36"	85
E: 36" * 84"	Max 34"	40"	86
F: 40" * 84"	Max 38"	44"	92

This diagram shows the minimum distance required from the rail hole to the ceiling (6 inches) and other critical dimensions for installation.

Your browser does not support the video tag.

Official installation video demonstrating the assembly of the bifold barn door and track system. This video provides a visual guide to the installation steps.

### Step 4: Hang the Doors

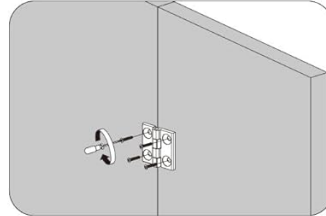
Carefully hang the assembled door panels onto the track. Use an Allen wrench to adjust the height of the adjustable roller to ensure the door is parallel to the rail. Lock the fixed roller onto the rail by tightening the long set screw.

# Easy to Install

Stacked doors are assembled and finished



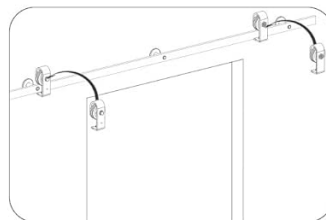
## A simple installation process that



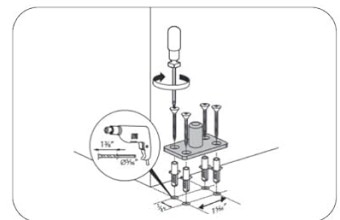
1. Assemble bifold butt hinge



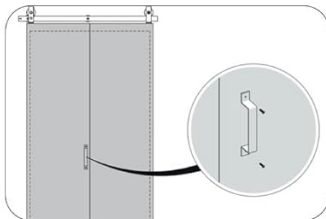
2. Install the hex bolts



3. Hang the fixed roller and the adjustable roller



4. Install the Bottom Pivot Plate



5. Install the handle



We come with a detailed installation manual

This image provides a step-by-step visual guide for the installation process, from assembling hinges to installing the handle.

### Step 5: Install the Handle

Attach the handle to the door panel as per the instructions provided in the detailed manual included with your package.

### OPERATING INSTRUCTIONS

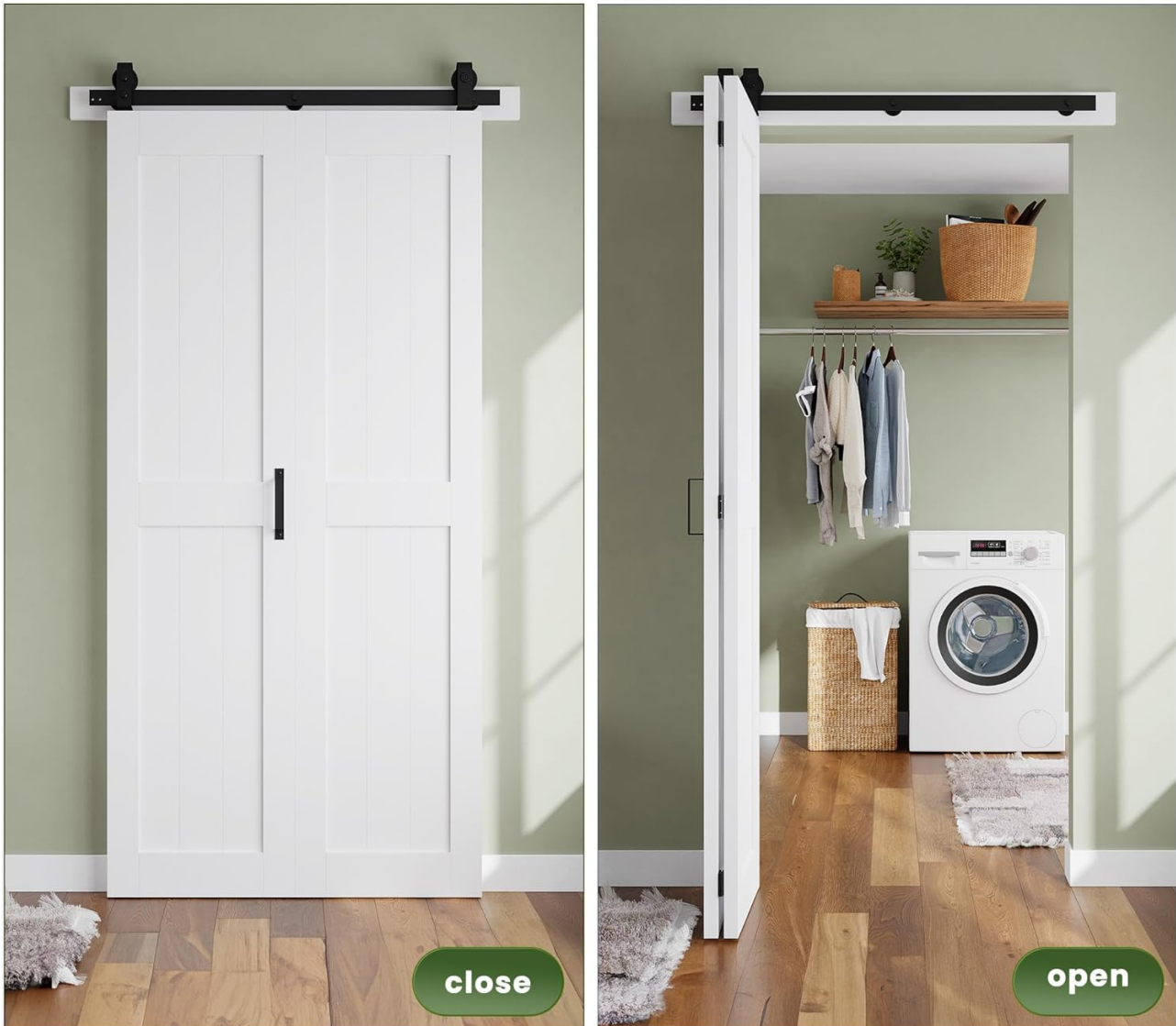
Your SMARTSTANDARD Bifold Barn Door is designed for smooth and quiet operation, saving up to 50% of space compared to traditional doors.

#### Opening and Closing

To open the door, gently push the panels inward. The bi-fold butt hinges allow the door to fold completely, maximizing your available space. To close, pull the panels outward until they meet in the center, forming a flush closure.

# Save 50% of Space

Takes up hardly any extra space, especially when the door is folded up.



This image illustrates the door in its closed state and fully open, highlighting how it saves 50% of space.

## Versatile Use

This bifold barn door is suitable for various living spaces, including bedrooms, laundry rooms, closets, pantries, studies, living rooms, and kitchens, offering a practical and aesthetic solution for space management.



**laundries**



**Living Room**



**Kitchen**

A collage showing the bifold door in different settings: laundry room, living room, and kitchen.

## MAINTENANCE

### Cleaning

The door panels are crafted from primed MDF with waterproof and scratch-resistant features. Clean them with a soft, damp cloth and a mild, non-abrasive detergent. Avoid harsh chemicals or abrasive cleaning tools that could damage the finish.

### Hardware Check

Periodically inspect all screws and fasteners on the track, rollers, and hinges to ensure they remain tight. Tighten any loose hardware to maintain optimal performance and safety.

### Smooth Operation

If the door does not slide smoothly, clean the track and rollers to remove any accumulated dust or debris. A small amount of silicone-based lubricant can be applied to the track if necessary, but avoid oil-based lubricants which

can attract dirt. The integrated anti-collision strip helps prolong service life and reduce operational noise.

## **TROUBLESHOOTING**

### **Door does not slide smoothly**

- Check for any obstructions in the track.
- Ensure rollers are clean and free of debris.
- Verify the track is level. Adjust the adjustable roller height if needed using an Allen wrench.
- Confirm the fixed roller is securely locked onto the rail.

### **Door does not close flush**

- Check the alignment of the bottom pivot plate. Precise measurements are crucial during installation.
- Ensure all hinges are properly installed and tightened.

### **Excessive noise during operation**

- Clean the track and rollers thoroughly.
- Check for loose hardware and tighten as necessary.
- Ensure the anti-collision strip is properly installed and intact.

### **Missing parts or damaged components**

- Refer to the "Package Contents" section to verify all items.
- Contact SMARTSTANDARD customer support for assistance with replacements or further guidance.

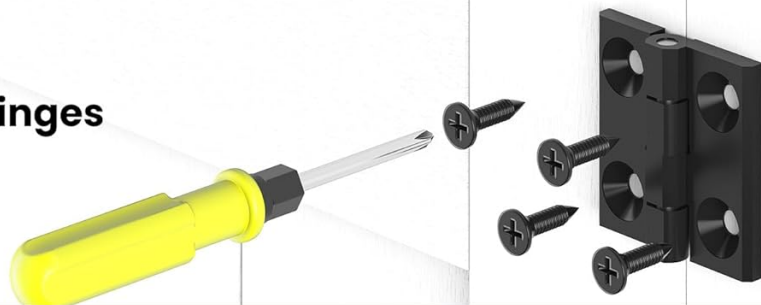
## **SPECIFICATIONS**

<b>Feature</b>	<b>Detail</b>
Brand	SMARTSTANDARD
Model Number	M-BDM-HB2-TKJ-WH
Color	White
Material	Polyvinyl Chloride (Primed MDF panels)
Style	Modern
Item Weight	71 Pounds
Product Dimensions	5 x 24 x 84 inches
Door Panel Size	24"(12"x2) x 84"
Door Panel Thickness	1 3/8"
Track Length	28"
Assembly Required	Yes
Included Components	Adjustable Roller, Bi-Fold Door Butt Hinges, Fixed Roller, Hardware Kit, Track Kit

## Exquisite product detail drawings



## **02** Bifold Door Butt Hinges



This image provides detailed drawings of key product components: the adjustable roller, bifold door butt hinges, and the bottom pivot plate.

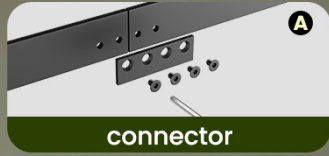
## **WARRANTY AND SUPPORT**

For specific warranty information or technical support regarding your SMARTSTANDARD Bifold Barn Door, please refer to the documentation included with your purchase or contact SMARTSTANDARD customer service directly.

The product is manufactured with high-quality materials, ensuring durability and resistance to corrosion, water, abrasion, and scratches, contributing to a long service life.

**The product is provided with connecting plate**

DIY combination of four doors is possible



This image highlights the door's material properties, including resistance to cat scratches and waterproof capabilities.