

Petory F03W

Petory Automatic Pet Feeder Instruction Manual

Model: F03W

1. INTRODUCTION

Thank you for choosing the Petory Automatic Pet Feeder. This device is designed to provide convenient and precise feeding for your cats and small dogs, ensuring they receive their meals on schedule, even when you're away. This manual provides detailed instructions for setting up, operating, maintaining, and troubleshooting your new feeder to ensure optimal performance and a healthy feeding routine for your pet.

2. PRODUCT OVERVIEW

The Petory Automatic Pet Feeder (Model F03W) is a smart feeding solution featuring 2.4G WiFi connectivity, allowing for remote control and scheduling via a dedicated app. It supports up to 10 meals daily with adjustable portion sizes, and includes a slow feed mode to promote healthy digestion.

- **Capacity:** Stores approximately 12.6 cups of dry pet food.
- **Portion Control:** 1-50 portions per meal (1 portion 1/24 cup).
- **Food Compatibility:** Suitable for dry food, mixed food, freeze-dried food, and air-dried food with a diameter of 0.2-0.6 inches.
- **Dual Power Supply:** Operates via USB-C power adapter or 3 D-cell batteries (not included) for backup.
- **Security:** Features a secure locking mechanism and button lock to prevent accidental changes by pets.
- **Dimensions:** Approximately 12.8 x 7.28 x 11.8 inches (L x W x H).
- **Weight:** 3 pounds.



Figure 2.1: Petory Automatic Pet Feeder and its accompanying mobile application interface.

Suitable for 0.2-0.6 inches Dry Food



Dry Food



Mixed Food



Freeze-Dried Food



Figure 2.2: Illustration of various food types and sizes compatible with the feeder, ranging from 0.2 to 0.6 inches in diameter.

3. SETUP

3.1 Unboxing and Assembly

1. Carefully remove all components from the packaging.
2. Place the stainless steel bowl into its base.
3. Ensure the food hopper is securely attached to the main unit.

3.2 Power Supply

The feeder supports dual power supply options:

- **Primary Power:** Connect the USB-C power adapter to the feeder and plug it into a wall outlet.
- **Backup Power:** For uninterrupted operation during power outages, install three D-cell batteries (not included)

in the battery compartment at the bottom of the unit.

Dual Power Supply



Figure 3.1: The feeder can be powered by an external adapter or by three D-cell batteries for backup.

3.3 Wi-Fi Connection

To utilize the smart features, connect your feeder to a 2.4GHz Wi-Fi network via the Petory app. The app allows for two connection modes: Bluetooth Mode and AP Mode.

3.3.1 Connecting via Bluetooth Mode

This is the recommended method for quick setup.

1. Download the Petory app from your device's app store.
2. Ensure your phone's Bluetooth is enabled.
3. Open the Petory app and follow the on-screen instructions to add a new device.
4. Confirm the Wi-Fi indicator on the feeder is flashing rapidly. If not, long-press the SET button on the feeder for 6 seconds to reset it until the indicator flashes rapidly.
5. The app will discover the feeder via Bluetooth. Select the feeder and enter your 2.4G Wi-Fi network password.

6. Once connected, the Wi-Fi indicator on the feeder will become solid white.

Your browser does not support the video tag.

Video 3.1: A step-by-step guide on connecting the Petory Automatic Pet Feeder to your Wi-Fi network using Bluetooth mode via the mobile application.

3.3.2 Connecting via AP Mode

Use this mode if Bluetooth connection is unsuccessful.

1. Ensure the feeder is powered on.
2. Long-press the SET button on the feeder for 6 seconds until the Wi-Fi indicator changes from fast flashing to slow flashing (1 flash per second). This indicates AP mode.
3. In the Petory app, select AP Mode for connection.
4. Follow the app's instructions to connect your phone to the feeder's temporary Wi-Fi hotspot (usually named "SmartLife-XXXX").
5. Return to the app and enter your home 2.4G Wi-Fi network password. The feeder will then connect to your home network.

Your browser does not support the video tag.

Video 3.2: Instructions for connecting the Petory Automatic Pet Feeder to Wi-Fi using AP mode, an alternative connection method.

4. OPERATING INSTRUCTIONS

4.1 Setting Feeding Schedule

The Petory app allows you to customize your pet's feeding schedule with precision.

1. Open the Petory app and select your feeder.
2. Navigate to the "Schedule" or "Meal Plan" section.
3. Add new feeding times, specifying the time of day and the number of portions (1-50) for each meal.
4. You can set up to 10 meals per day.

Customized Feeding Schedule

1-10 meals/day

1-50 portions/meal

1 portion about **1/24** cup

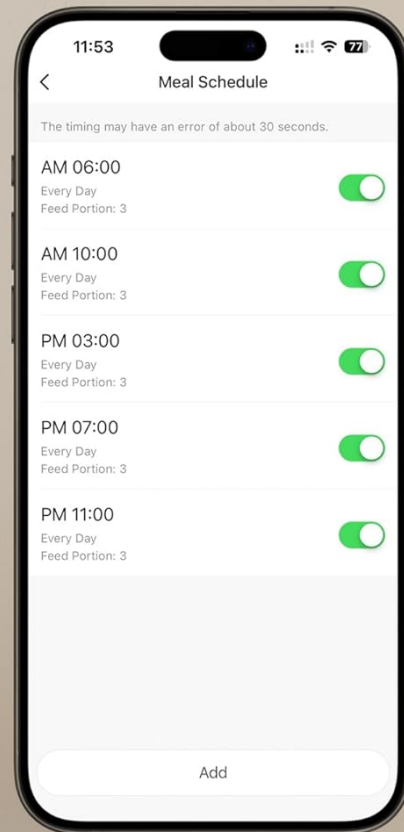


Figure 4.1: The mobile app interface for setting a customized feeding schedule, allowing for multiple meals and precise portion control.

4.2 Slow Feed Mode

To prevent rapid eating and promote better digestion, activate the slow feed mode in the app. This feature dispenses food gradually over a set interval (e.g., 1-10 minutes per portion).

Slow Feed Mode

Set the interval time for dispense from this portion to the next



Figure 4.2: Visual representation of the slow feed mode, showing how food portions are dispensed with a set interval to encourage slower eating.

4.3 Manual Feeding

You can dispense food instantly at any time using the app or the manual feed button on the feeder.

- **Via App:** On the main screen of the feeder in the app, select the desired number of portions and tap "Manual Feed".
- **Via Feeder:** Press the manual feed button on the feeder's control panel to dispense one portion.

4.4 Locking Mechanism and Alerts

The feeder includes a button lock feature to prevent pets from accidentally changing settings. The app also provides real-time alerts for important events.

- **Button Lock:** Activate this feature in the app to disable physical buttons on the feeder.
- **Real-Time Alerts:** Receive notifications on your phone for events such as low food levels, food blocking, or low battery.

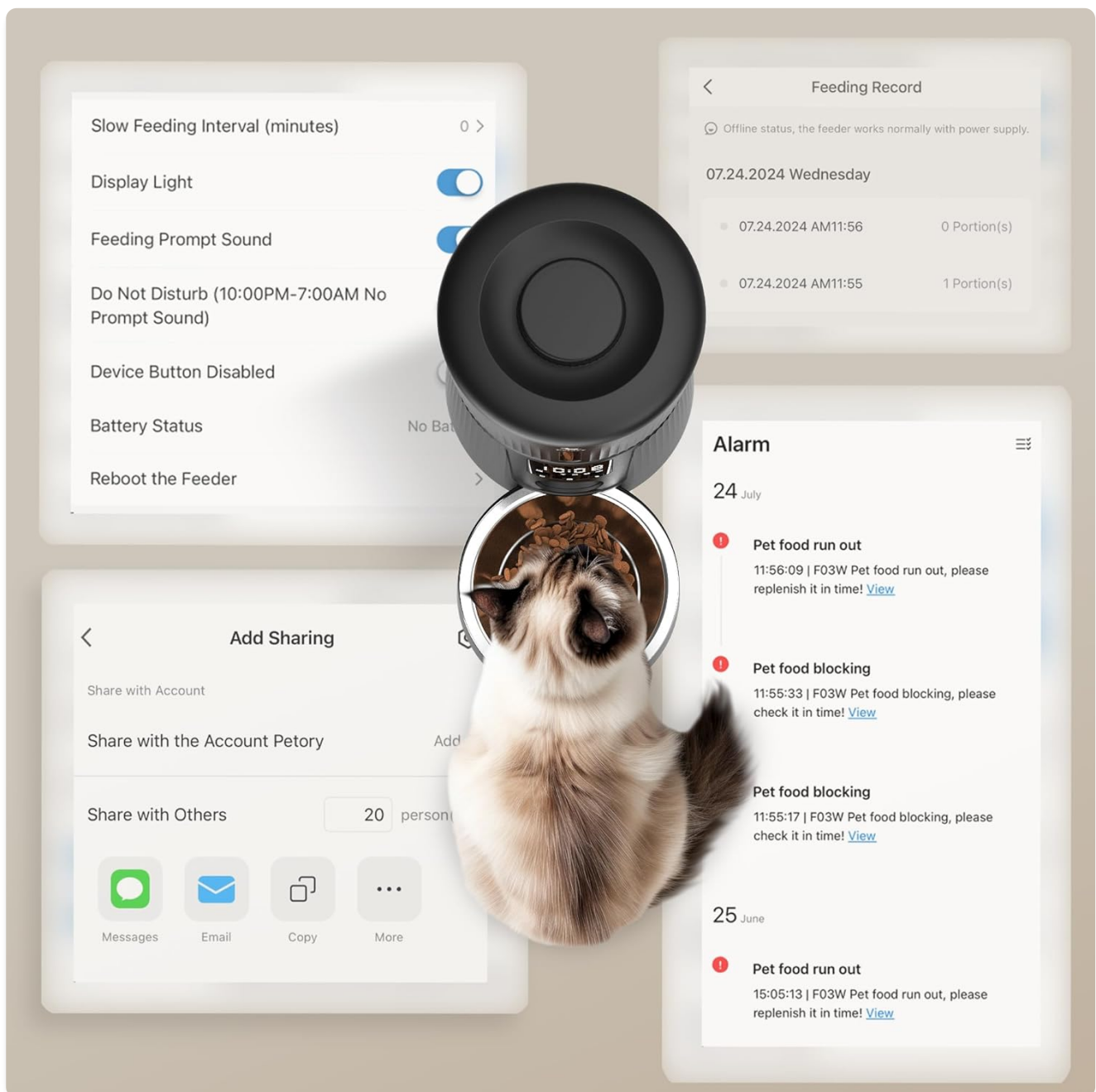


Figure 4.3: The mobile app displays feeding records and sends timely alerts for critical events like food run out or food blocking.

5. MAINTENANCE

5.1 Cleaning

Regular cleaning ensures hygiene and proper functioning of the feeder.

- **Food Bowl:** The stainless steel bowl is removable and can be hand washed with mild soap and water. Rinse thoroughly and dry completely before reinserting.
- **Food Hopper and Dispenser:** Wipe down the inside of the food hopper and the dispenser mechanism with a damp cloth. Ensure all parts are dry before refilling with food. Do not submerge the main unit in water.
- **Exterior:** Wipe the exterior of the feeder with a soft, dry cloth.

5.2 Desiccant Bag Replacement

The feeder includes a desiccant bag to keep food fresh and prevent spoilage. It is recommended to replace the desiccant bag (1.77 x 2.2 inches) every month for optimal freshness.

6. TROUBLESHOOTING

Problem	Possible Cause	Solution
Feeder not dispensing food.	Food hopper empty; food jammed; dispenser motor issue.	Check food level and refill; clear any food blockages; ensure power supply is stable. Check app alerts for "food blocking".
Wi-Fi connection unstable or disconnected.	Incorrect Wi-Fi password; feeder too far from router; 5GHz network used.	Re-enter Wi-Fi password in app; move feeder closer to router; ensure you are connecting to a 2.4GHz network. Reset feeder and try connecting again.
Feeder not powering on.	Power adapter disconnected; batteries drained or not installed.	Check power adapter connection; replace D-cell batteries if using backup power.
Settings changed unexpectedly.	Pet interfered with buttons.	Activate the button lock feature in the Petory app.

For further assistance, please refer to the FAQ section on the Petory website or contact customer support.

7. SPECIFICATIONS

Feature	Detail
Brand	Petory
Model Name	F03W
Item Weight	3 Pounds
Item Dimensions (LxWxH)	12.8 x 7.28 x 11.8 inches
Material	BPA Free
Target Species	House-cats, Small Dogs
Power Supply	USB-C (Primary), 3 D-cell batteries (Backup)
Connectivity	2.4G WiFi
Max Meals/Day	10

Feature	Detail
Portions/Meal	1-50
Special Feature	Voice Recording
Care Instructions	Hand Wash Only
Manufacturer	Shenzhen Jingyi Technology Co., Ltd.
Country of Origin	China

8. WARRANTY & SUPPORT


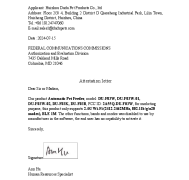
8.1 Warranty Information

The Petory Automatic Pet Feeder comes with a **1-Year Warranty** from the date of purchase. This warranty covers manufacturing defects and malfunctions under normal use. Please retain your proof of purchase for warranty claims.

8.2 Customer Support

For technical support, troubleshooting assistance, or warranty inquiries, please visit the official Petory website or contact their customer service team. Contact details can typically be found on the product packaging or the brand's official online presence.

Related Documents - F03W

	<p>Petory F01 Automatic Pet Feeder User Manual</p> <p>Comprehensive user manual for the Petory F01 Automatic Pet Feeder. Learn how to install, operate, program feeding schedules, and troubleshoot your pet's automatic food dispenser. Includes safety information, product specifications, and cleaning instructions.</p>
	<p>FCC Attestation Letter for Dudu Pet Products Automatic Pet Feeder</p> <p>An attestation letter from Huizhou Dudu Pet Products Co., Ltd. to the FCC, confirming that their Automatic Pet Feeder models DU-F03W, DU-F03W-01, DU-F03W-02, DU-F03K, DU-F03B (FCC ID: 2A55Q-DU-F03W) only support 2.4G Wi-Fi and BLE 1M, with other functions disabled by the manufacturer.</p>



Confidentiality Request Letter - Shenzhen Patpet Automatic Pet Feeder Models

Official request for confidentiality of technical documents for Shenzhen Patpet Automatic Pet Feeder models PF1W, PF2W, PF3W, PF5W, F01W, F02W, F03W, F05W, FCC ID: 2AHHY-PF1W, submitted to Eurofins Electrical and Electronic Testing NA, Inc.



Shenzhen Patpet Technology Automatic Pet Feeder Model Difference Letter

Official letter from Shenzhen Patpet Technology Co., Ltd to the Federal Communications Commission detailing model differences for the Automatic Pet Feeder, including models PF1W, PF2W, PF3W, PF5W, F01W, F02W, F03W, and F05W, all sharing the same circuit and RF module.



TEST REPORT

Report No.:	ICT225586334-1E
Applicant:	Shenzhen Pinpet Technology Co., Ltd
Product Name:	Automatic Pet Feeder
Model/Type Ref.:	PF1W
Tested Date:	2022-05-14 to 2022-05-24
Issued Date:	2022-05-24



Shenzhen Patpet Automatic Pet Feeder PF1W RF Test Report

Comprehensive RF compliance test report for the Shenzhen Patpet Automatic Pet Feeder, Model PF1W, covering conducted emissions, radiated emissions, power spectral density, bandwidth, and peak output power. Tested by Shenzhen BCTC Testing Co., Ltd.