

[Manuals.plus](#) /

› [Kacarber](#) /

› Kacarber 595321 Carburetor Instruction Manual for Briggs & Stratton 44N877 and Husqvarna 24v54 Mowers

Kacarber 595321

Kacarber 595321 Carburetor Instruction Manual

For Briggs & Stratton 44N877 Gas Engines and Husqvarna 24v54 Mowers

INTRODUCTION

This manual provides detailed instructions for the installation, operation, maintenance, and troubleshooting of the Kacarber 595321 Carburetor. This carburetor is designed as a replacement part for Briggs & Stratton 44N877 gas engines and Husqvarna 24v54 lawn mowers. Please read this manual thoroughly before attempting any installation or maintenance procedures to ensure safe and correct usage.

SAFETY INFORMATION

- Always disconnect the spark plug wire and battery (if applicable) before working on the engine to prevent accidental starting.
- Ensure the engine is cool before performing any maintenance to avoid burns.
- Work in a well-ventilated area. Gasoline fumes are flammable and hazardous.
- Wear appropriate personal protective equipment, including gloves and eye protection.
- Handle gasoline with extreme care. Store in approved containers away from ignition sources.
- Refer to your equipment's original service manual for specific engine and mower safety guidelines.

PACKAGE CONTENTS

Verify that all components are present and undamaged upon opening the package.

- 1 x Kacarber 595321 Carburetor
- Gaskets (if included in kit)



Image: Front view of the Kacarber 595321 Carburetor, showing the main body and intake.

SPECIFICATIONS

Feature	Description
Model Number	595321
Brand	Kacarber
Compatibility	Briggs & Stratton 44N877 Gas Engine, Husqvarna 24v54 Mower
Fuel Type	Gasoline
Replacement Part Number	595321

SETUP AND INSTALLATION

This section outlines the general steps for replacing a carburetor. Specific procedures may vary based on your engine and mower model. Always consult your equipment's service manual for detailed instructions.

1. Preparation

- Park the mower on a level surface and engage the parking brake.
- Disconnect the spark plug wire to prevent accidental starting.
- Allow the engine to cool completely.
- Turn off the fuel supply valve (if equipped) or clamp the fuel line.
- Drain the fuel tank if necessary, or use a fuel siphon to remove fuel from the tank.

2. Removal of Old Carburetor

1. Locate the carburetor on the engine. It is typically mounted between the air filter and the engine intake manifold.
2. Carefully disconnect the fuel line from the carburetor. Be prepared for residual fuel to spill.
3. Disconnect any throttle linkage, choke linkage, and electrical connections (e.g., fuel solenoid) attached to the carburetor. Note their positions for reassembly.
4. Remove the mounting bolts or nuts that secure the carburetor to the engine.
5. Gently remove the old carburetor and any old gaskets. Inspect the intake manifold for debris or damage.

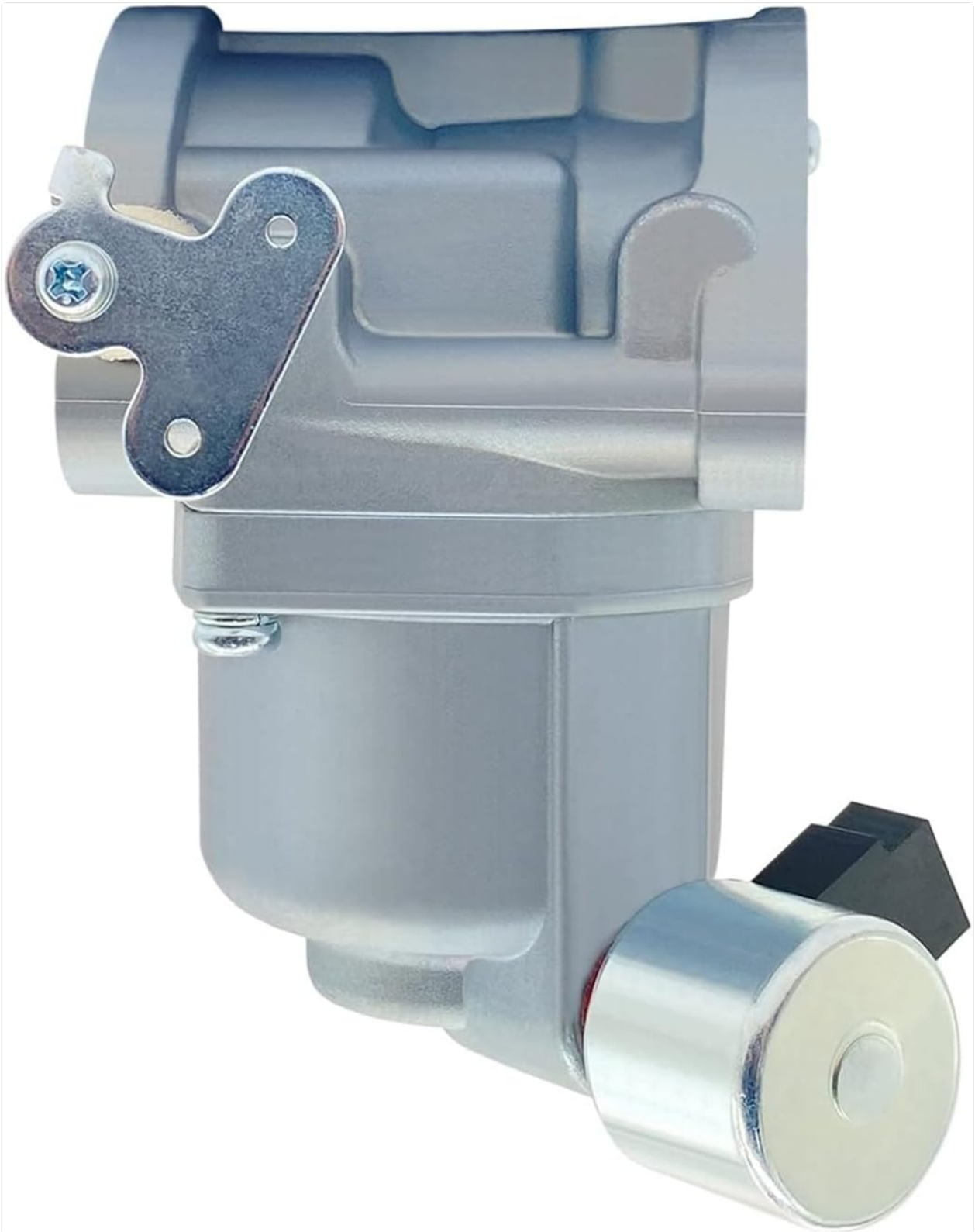


Image: Side view of the Kacarber 595321 Carburetor, highlighting the fuel solenoid and linkage points.

3. Installation of New Carburetor

1. Ensure all mating surfaces are clean and free of old gasket material.
2. Place new gaskets in their correct positions.
3. Mount the new Kacarber 595321 Carburetor onto the engine, aligning it with the mounting studs or bolt holes.
4. Secure the carburetor with the mounting bolts or nuts. Tighten them evenly to the manufacturer's recommended torque specifications (refer to your engine manual).
5. Reconnect the throttle linkage, choke linkage, and any electrical connections. Ensure they move freely

and operate correctly.

6. Reconnect the fuel line to the carburetor. Ensure a secure, leak-free connection.
7. If a fuel pump is present, ensure its connections are also secure.



Image: Illustrative image of a fuel pump, a component often associated with carburetor systems in some engines.

OPERATION (POST-INSTALLATION)

After installation, perform the following steps before starting the engine:

- Open the fuel supply valve (if applicable).
- Check for any fuel leaks around the carburetor and fuel lines. Address any leaks immediately.
- Reconnect the spark plug wire.
- Start the engine according to your mower's operating instructions.
- Allow the engine to warm up and observe its performance. The carburetor should provide smooth idling and acceleration.
- If the engine runs rough, refer to the Troubleshooting section.



Image: A riding lawn mower in operation, representing the typical application of this carburetor.

MAINTENANCE

Proper maintenance ensures the longevity and optimal performance of your carburetor.

- **Fuel Quality:** Always use fresh, clean gasoline. Stale or contaminated fuel can clog carburetor passages. Consider using a fuel stabilizer if the equipment is stored for extended periods.
- **Fuel Filter:** Regularly inspect and replace the fuel filter according to your engine manufacturer's recommendations. A clogged fuel filter can restrict fuel flow to the carburetor.
- **Air Filter:** Maintain a clean air filter. A dirty air filter can cause the engine to run rich and affect carburetor performance.
- **Storage:** Before long-term storage, run the engine until it runs out of fuel, or drain the fuel system to prevent fuel degradation and carburetor gumming.

TROUBLESHOOTING

If you encounter issues after installing the carburetor, consider the following common problems and solutions:

Problem	Possible Cause	Solution
Engine will not start	No fuel, clogged fuel line, incorrect choke setting, spark plug issue	Check fuel level, inspect fuel line for kinks/blockages, ensure choke is set correctly, check spark plug.
Engine runs rough or surges	Dirty air filter, old/stale fuel, minor carburetor adjustment needed, vacuum leak	Clean/replace air filter, use fresh fuel, check for loose connections, consult a service professional for adjustments.
Fuel leaks from carburetor	Improperly seated gaskets, loose connections, damaged float/needle valve	Ensure gaskets are correctly installed and connections are tight. If leaks persist, the carburetor may require inspection or replacement of internal components.
Engine lacks power	Clogged fuel filter, dirty air filter, carburetor not delivering enough fuel	Replace fuel filter, clean/replace air filter, ensure fuel flow is unobstructed.

If troubleshooting steps do not resolve the issue, it is recommended to consult a qualified small engine technician.

WARRANTY AND SUPPORT

For warranty information or technical support regarding your Kacarber 595321 Carburetor, please refer to the seller's return policy or contact the retailer from whom the product was purchased. Keep your proof of purchase for any warranty claims.

© 2024 Kacarber. All rights reserved.