

1Mii ML302+

1Mii RCA Bluetooth 5.3 Adapter User Manual

Model: ML302+

Brand: 1Mii

INTRODUCTION

Thank you for choosing the 1Mii RCA Bluetooth 5.3 Adapter (Model ML302+). This versatile 2-in-1 device functions as both a Bluetooth transmitter and receiver, enabling seamless wireless audio connectivity for a wide range of devices. Whether you want to stream audio from your non-Bluetooth TV to wireless headphones or transform your wired speakers into a Bluetooth-enabled system, the ML302+ provides a high-fidelity, low-latency solution.



Image: The 1Mii ML302+ Bluetooth adapter, a compact black device with control buttons and audio ports.

SAFETY INFORMATION

Please read the following safety guidelines carefully before using the device:

- Avoid placing the device near other wireless devices to prevent interference.
- Keep the battery away from extreme temperatures and humidity.
- Do not dispose of the battery in regular trash; follow local regulations for battery disposal.
- Do not disassemble, modify, or attempt to repair the device yourself. This may void the warranty and pose safety risks.
- Keep the device away from water or other liquids.

PACKAGE CONTENTS

Ensure all items are present in your package:

- 1Mii Bluetooth Transmitter Receiver (ML302+)
- Instruction Manual
- 3.5mm Audio Cable
- RCA Audio Cable
- Type-C Power Cord

WIRELESS 5.3 CHIP

Equipped with high-performance wireless 5.3 chip, enhanced transmission signal, more stable and smooth connection.

Note: To achieve low latency, your Bluetooth headphones/speaker should also support aptX Low Latency.

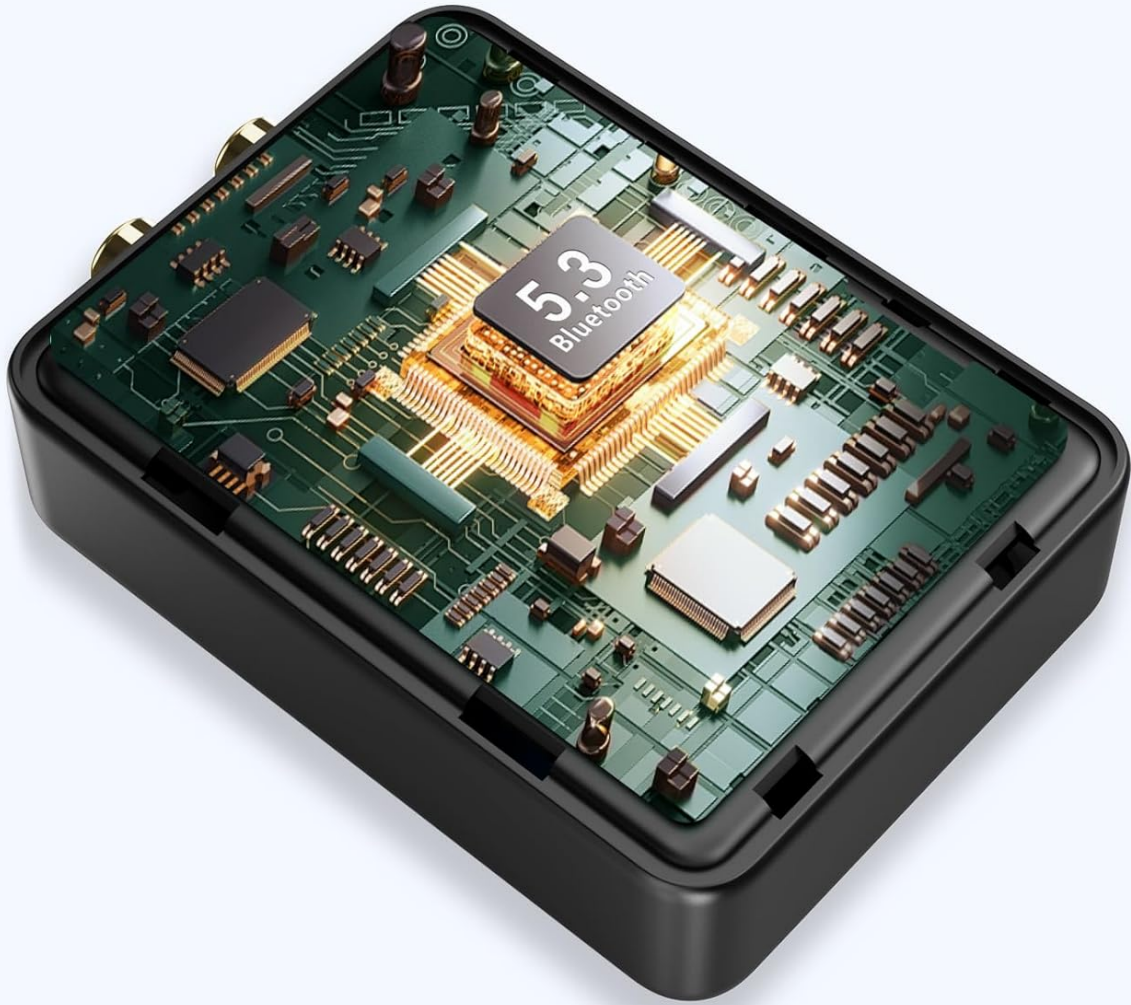


Image: A visual representation of the ML302+ adapter and its included accessories: instruction manual, 3.5mm audio cable, RCA audio cable, and Type-C power cord.

PRODUCT OVERVIEW

The 1Mii ML302+ is designed for maximum versatility, offering both transmitting and receiving capabilities:

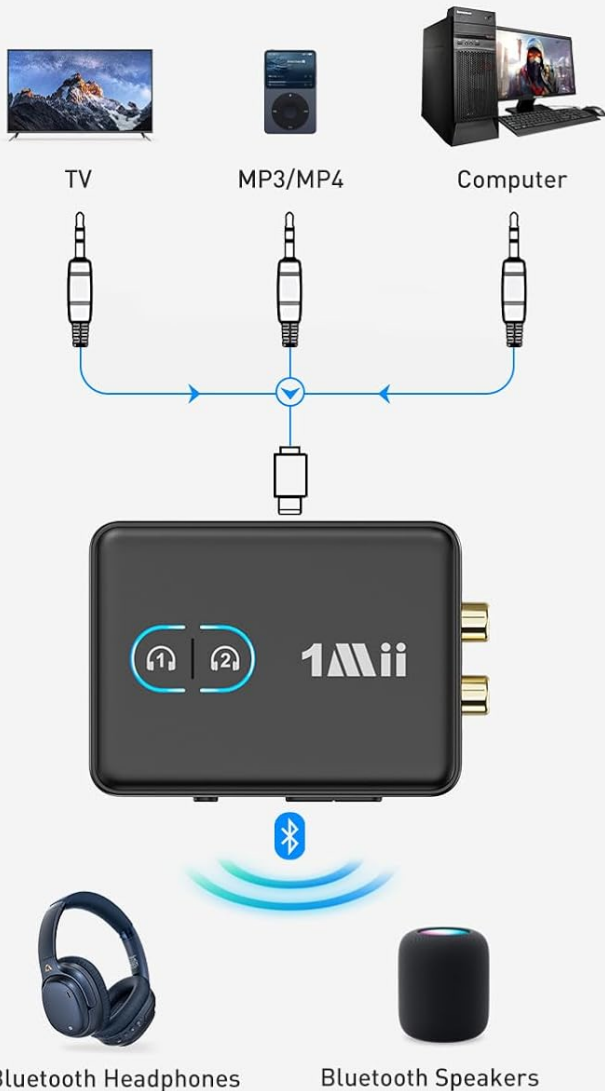
- **Transmitter (TX) Mode:** Convert non-Bluetooth audio sources (TV, PC, Projector, Treadmills) into Bluetooth-enabled devices, allowing them to connect to Bluetooth headphones or speakers.
- **Receiver (RX) Mode:** Enable non-Bluetooth audio devices (Home Stereo, Speakers, Car Stereo) to receive Bluetooth audio from your smartphone or tablet.
- **Bluetooth 5.3:** Provides stable, fast, and reliable connections.
- **aptX Low Latency:** Ensures synchronized audio and video, minimizing lip-sync delay when paired with compatible devices.
- **Dual Connection:** Connect two Bluetooth headphones simultaneously in TX mode, or two devices in RX mode.
- **Volume Control:** Integrated buttons for easy audio level adjustment.

- **Long Battery Life:** Up to 30 hours of continuous use on a single charge.

2-IN-1

Bluetooth Transmitter and Receiver

Transmitter Mode



Receiver Mode

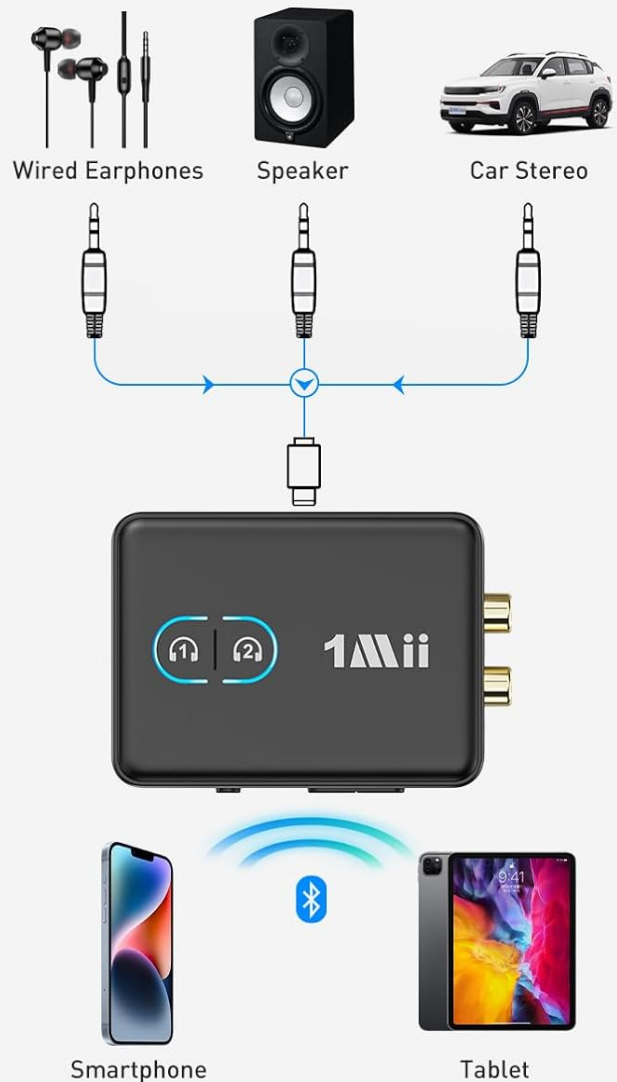


Image: Diagram illustrating the 2-in-1 functionality, showing how the device acts as a transmitter for TVs/PCs to headphones/speakers, and as a receiver for phones/tablets to wired earphones/speakers/car stereos.

SETUP

1. Charging the Device

Before first use, fully charge the ML302+ using the provided Type-C power cord and a standard USB power adapter (not included). The device has a built-in Lithium Polymer battery. You can check the battery level by pressing the Bluetooth button 3 times (LEDs flash 1-5 times, each flash = 20% battery level).

2. Selecting Operating Mode (TX/RX)

Locate the TX/OFF/RX switch on the side of the device. Slide the switch to the desired mode:

- **TX (Transmitter) Mode:** To send audio from a non-Bluetooth device (e.g., TV) to Bluetooth headphones/speakers.

- **RX (Receiver) Mode:** To receive audio from a Bluetooth device (e.g., smartphone) and play it through wired speakers/car stereo.

3. Connecting to Your Audio Source/Device

The ML302+ supports both 3.5mm AUX and RCA connections. Choose the appropriate cable based on your device's audio output/input ports.

- **In TX Mode:** Connect the ML302+ to the **AUDIO OUT** jack of your device (e.g., TV, PC) using either the 3.5mm AUX cable or the RCA cable.
- **In RX Mode:** Connect the ML302+ to the **AUDIO IN** jack of your wired audio system (e.g., home stereo, speakers) using either the 3.5mm AUX cable or the RCA cable.

Dual Connection

Easily pair with two headphones simultaneously



Image: Close-up view of the ML302+ showing its 3.5mm AUX and RCA input/output ports.

Before You Buy, Please Note:

Please make sure your TV has 3.5mm AUX AUDIO OUT jack or Headphone jack or 2RCA AUDIO OUT jack.

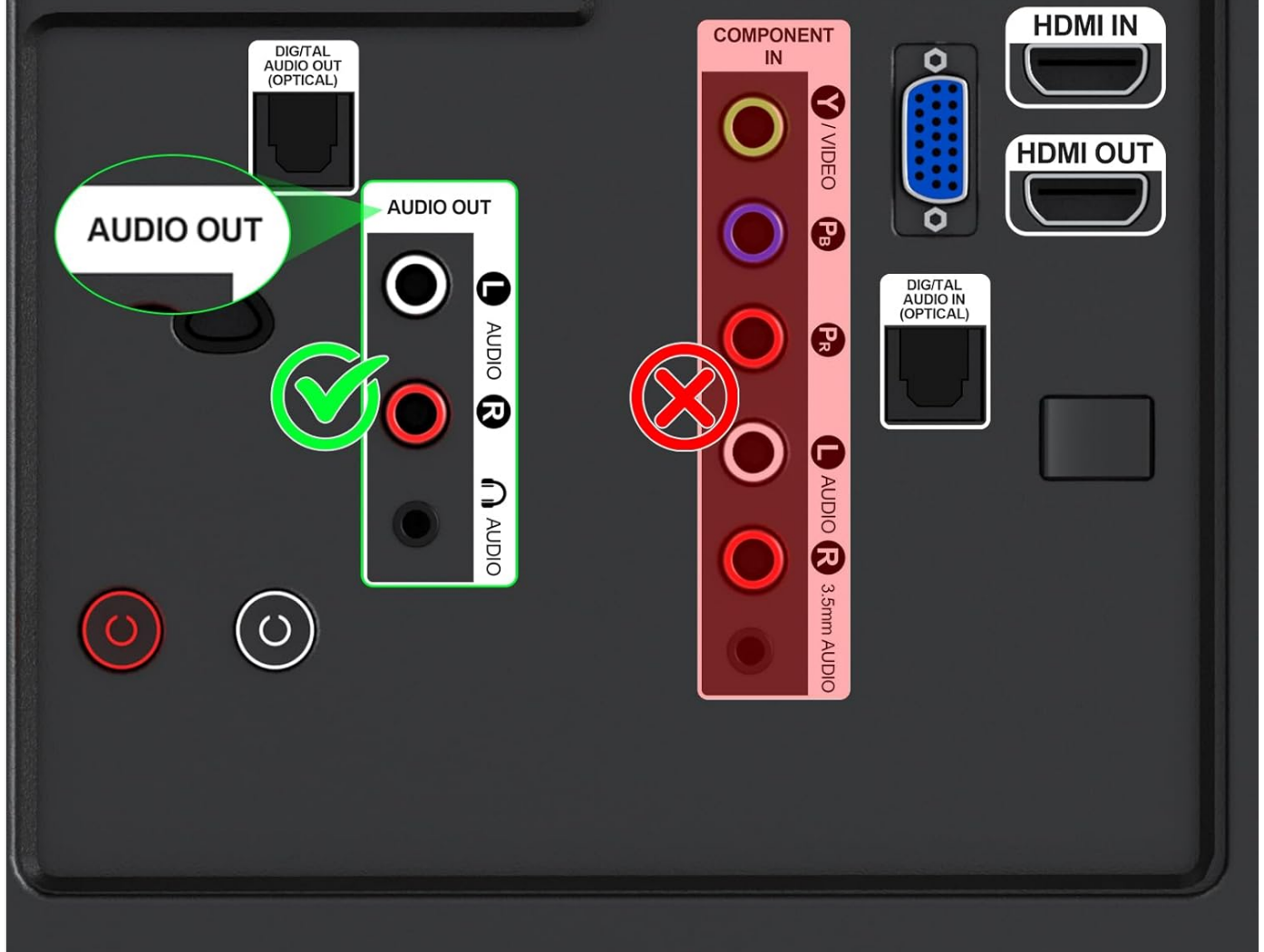


Image: Diagram illustrating correct audio output connections on a TV for the ML302+, highlighting 3.5mm AUX and RCA audio out jacks.

OPERATING INSTRUCTIONS

Transmitter (TX) Mode Operation

In TX mode, the ML302+ sends audio from your non-Bluetooth device to Bluetooth headphones or speakers.

1. Ensure the ML302+ is switched to "TX" mode and connected to your audio source's AUDIO OUT port.
2. **Pairing the First Bluetooth Headphone/Speaker:**
 - Press and hold the Bluetooth button #1 (labeled with a headphone icon) on the ML302+ for 2 seconds to enter pairing mode. The LED will flash red and blue.
 - Put your Bluetooth headphones/speaker into pairing mode (refer to your headphone/speaker manual for specific instructions).
 - Once successfully paired, the LED on the ML302+ for button #1 will stay solid blue.
3. **Pairing the Second Bluetooth Headphone/Speaker (Optional):**

- Press and hold the Bluetooth button #2 (labeled with a headphone icon) on the ML302+ for 2 seconds to enter pairing mode. The LED will flash red and blue.
- Put your second Bluetooth headphones/speaker into pairing mode.
- Once successfully paired, the LED on the ML302+ for button #2 will stay solid blue.

4. Audio from your source device will now be transmitted to your connected Bluetooth headphones/speakers.

aptX Low Latency

Ensure synchronized audio and video while watching TV
Headphones required aptX-LL support



Image: A person watching TV with Bluetooth headphones connected via the ML302+, demonstrating aptX Low Latency for synchronized audio.

Add Bluetooth to An Old Stereo Receiver System

Get rid of wires, enjoy high-definition wireless music



Image: Two people sharing audio from a tablet to two pairs of Bluetooth headphones, illustrating the dual connection feature in TX mode.

Receiver (RX) Mode Operation

In RX mode, the ML302+ receives audio from your Bluetooth-enabled device (e.g., smartphone) and plays it through wired speakers or a car stereo.

1. Ensure the ML302+ is switched to "RX" mode and connected to your wired audio system's AUDIO IN port.
2. **Pairing with your Smartphone/Tablet:**
 - The ML302+ will automatically enter pairing mode in RX mode (LED flashes red and blue).
 - On your smartphone or tablet, go to Bluetooth settings and search for "ML302+". Select it to connect.
 - Once successfully paired, the LED on the ML302+ will stay solid blue.
3. You can now stream audio wirelessly from your smartphone/tablet to your wired audio system.

Move Freely, Train Wireless

Enjoy high definition audio while exercising

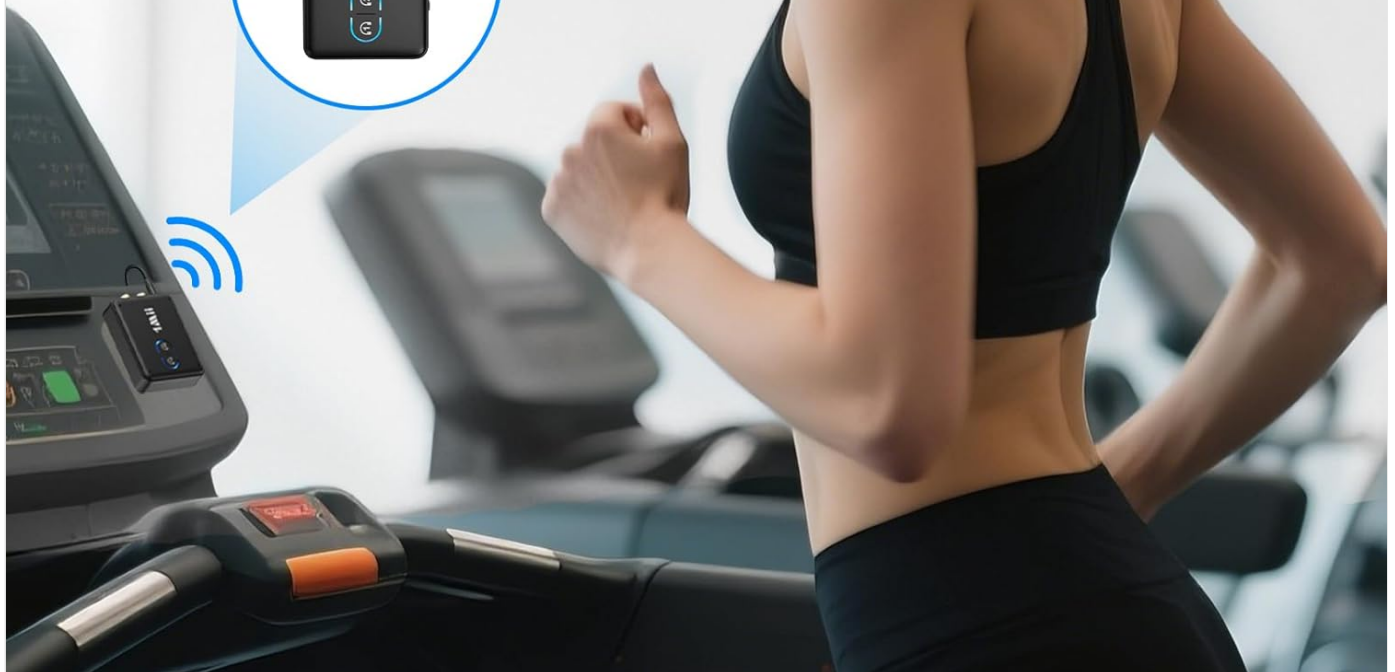


Image: A family enjoying music through a wired speaker connected to the ML302+ in RX mode, streaming from a mobile device.

Volume Control

The ML302+ features dedicated volume control buttons. Use the '+' button to increase volume and the '-' button to decrease volume. For optimal sound, it is recommended to set the volume on the ML302+ to maximum and control the final output volume from your connected headphones/speakers or source device.

Official Product Video: How to use ML302+ to connect Bluetooth headphone to TV

Your browser does not support the video tag.

Video: A step-by-step guide demonstrating how to set up the 1Mii ML302+ in transmitter mode to connect Bluetooth headphones to a TV, including pairing multiple headphones and connecting audio cables.

MAINTENANCE

To ensure the longevity and optimal performance of your 1Mii ML302+ adapter, follow these maintenance guidelines:

- **Cleaning:** Use a soft, dry cloth to clean the device. Avoid using abrasive cleaners, solvents, or strong chemicals, as

they may damage the surface or internal components.

- **Storage:** When not in use for extended periods, store the device in a cool, dry place away from direct sunlight and extreme temperatures.
- **Handling:** Handle the device with care. Avoid dropping it or subjecting it to strong impacts, which can cause internal damage.
- **Charging:** Only use the provided Type-C power cord for charging. Do not use damaged cables or chargers.

TROUBLESHOOTING

If you encounter issues with your 1Mii ML302+ adapter, please refer to the following common problems and solutions:

Problem	Possible Cause / Solution
No sound or low volume.	<ul style="list-style-type: none">◦ Ensure the ML302+ is correctly connected to the AUDIO OUT (TX mode) or AUDIO IN (RX mode) jack of your device.◦ Check the volume levels on the ML302+, your connected headphones/speakers, and the source device. Increase all volumes.◦ Verify that the correct audio output is selected on your TV or source device.◦ If using a record player, ensure it's set to LINE output, not PHONO, if applicable.
Cannot pair with Bluetooth headphones/speakers.	<ul style="list-style-type: none">◦ Ensure the ML302+ is in the correct mode (TX for headphones/speakers, RX for receiving from phone).◦ Make sure both the ML302+ and your headphones/speakers are in pairing mode (LEDs flashing red and blue on ML302+).◦ Move the devices closer to each other.◦ Clear previous pairing records on both devices and try pairing again.◦ Ensure no other Bluetooth devices are interfering with the pairing process.
Audio delay (lip-sync issues).	<ul style="list-style-type: none">◦ To achieve aptX Low Latency, both the ML302+ and your Bluetooth headphones/speakers must support aptX Low Latency. If only one device supports it, a standard codec (like SBC/aptX) will be used, which may result in a 70-200ms audio delay.◦ Ensure there are no significant obstacles between the ML302+ and your receiving device.
Device not turning on.	<ul style="list-style-type: none">◦ Check if the battery is charged. Connect the device to power using the Type-C cable.◦ Ensure the TX/OFF/RX switch is not in the "OFF" position.

SPECIFICATIONS

Feature	Detail
Product Dimensions	2.95 x 2.17 x 0.78 inches
Item Weight	0.634 ounces
Bluetooth Version	5.3

Feature	Detail
Supported Audio Codecs	aptX-Adaptive, aptX-Low Latency, SBC, AAC
Connectivity Technology	Bluetooth, 3.5mm AUX, RCA
Power Source	Battery Powered (1 Lithium Polymer battery included)
Battery Life	Up to 30 hours (approx.)
Manufacturer	1Mii

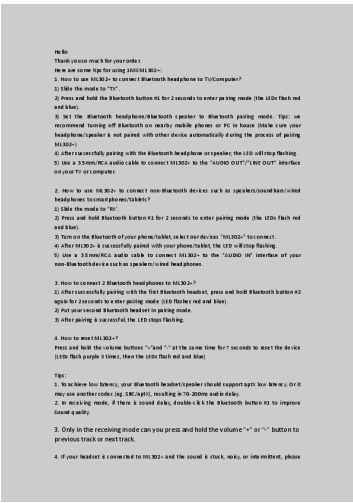
WARRANTY AND SUPPORT

1Mii products typically come with a standard manufacturer's warranty. For specific warranty details, technical support, or further assistance, please refer to the official 1Mii website or contact their customer service directly.

You can also refer to the official User Manual (PDF) for additional information[Download User Manual \(PDF\)](#)

© 2025 1Mii. All rights reserved.

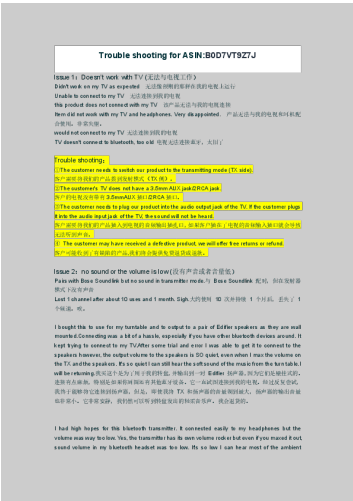
Documents - 1Mii – ML302



[pdf] Troubleshooting Guide Guide

YeeMall 1Mii RCA Bluetooth 5 3 Adapter for TV 5mm AUX Transmitter Receiver 2 AirPods or Headphones Home Stereo Speakers Projector Treadmills PC with Volume Control aptX Low LatencyTroubleshooting Guide Latency B0D7VT9Z7J513B7pINn7Lm media amazon images I 513B7pINn7L |||

Hello Thank you so much for your order. Here are some tips for using 1Mi**ML302** : 1. How to use **ML302** to connect Bluetooth headphone to TV/Computer 1 Slide the mode to TX . 2 Press and hold the Bluetooth button #1 for 2 seconds to enter pairing mode the LEDs flash red and blue . 3 Set the Blu...
lang:en score:37 filesize: 40.39 K page_count: 2 document date: 2025-06-24



Troubleshooting Guide for 1Mii ML302+ Bluetooth Transmitter/Receiver

A comprehensive troubleshooting guide for the 1Mii ML302+ Bluetooth transmitter and receiver, covering common issues such as connectivity problems, no sound, low volume, audio delay, and pairing difficulties.
lang:en score:24 filesize: 156.63 K page_count: 4 document date: 2025-03-28

Page 1 of 21 Report No.: LCSA08232016EA

RADIO TEST REPORT

For
Shenzhen ankbit international Limited
Bluetooth transmitter and receiver 2-in-1
Test Model: ML301
Additional Model No.: Please Refer to Page 6

Prepared for Address : Shenzhen ankbit international Limited
: Runfeng Industrial Park, 4197 Baoan Blvd, Xixiang St,
Baoan Dist, Shenzhen, China

Prepared by Address : Shenzhen LCS Compliance Testing Laboratory Ltd.
: Room 101, 201, Building A and Room 301, Building C,
Juli Industrial Park, Yabansuocuiwei, Shajing Street,
Baoan District, Shenzhen, Guangdong, China

Tel : (+86)755-82591332
Fax : (+86)755-82591332
Web : www.LCS-cert.com
Mail : webmaster@LCS-cert.com

Date of receipt of test sample : August 24, 2022
Number of tested samples : 2
Serial number :
Date of Test : August 24, 2022 - September 08, 2022
Date of Report : September 09, 2022

Shenzhen LCS Compliance Testing Laboratory Ltd.
Room 101, 201, Building A and Room 301, Building C, Juli Industrial Park, Yabansuocuiwei, Shajing Street,
Baoan District, Shenzhen, Guangdong, China
Tel: (+86)755-82591332 E-mail: webmaster@lcs-cert.com Web: www.lcs-cert.com
Fax: (+86)755-82591332

[pdf] Test Report

FCC PART 15 news Bluetooth transmitter and receiver 2 in 1 Trade Mark 1Mii 302Pro ML302Pro RT238
RT6007Q1 ML300 219 229207 02 006 tele soumu go jp giteki SearchServlet2 PageID jt01 ATF
102461006 |||

Page 1 of 21 Report No.: LCSA082322016EA RADIO TEST REPORT For Shenzhen
ankbit international Limit ... al Model No. Model Declaration Power Supply Hardware
Version : ML301 , ML301Pro, ML301Pro , ML302, **ML302** , ML 302Pro, ML302Pro ,
RT238, RT6007Q1, ML300, ML300 , ML300Pro, ML300Pro , RT239 : PCB board...
lang:en score:19 filesize: 906.31 K page_count: 21 document date: 2022-09-20

Page 1 of 20 Report No.: LCSA08232016EB

RADIO TEST REPORT

For
Shenzhen ankbit international Limited
Bluetooth transmitter and receiver 2-in-1
Test Model: ML301
Additional Model No.: Please Refer to Page 6

Prepared for Address : Shenzhen ankbit international Limited
: Runfeng Industrial Park, 4197 Baoan Blvd, Xixiang St,
Baoan Dist, Shenzhen, China

Prepared by Address : Shenzhen LCS Compliance Testing Laboratory Ltd.
: Room 101, 201, Building A and Room 301, Building C,
Juli Industrial Park, Yabansuocuiwei, Shajing Street,
Baoan District, Shenzhen, Guangdong, China

Tel : (+86)755-82591332
Fax : (+86)755-82591332
Web : www.LCS-cert.com
Mail : webmaster@LCS-cert.com

Date of receipt of test sample : August 24, 2022
Number of tested samples : 2
Serial number :
Date of Test : August 24, 2022 - September 08, 2022
Date of Report : September 09, 2022

Shenzhen LCS Compliance Testing Laboratory Ltd.
Room 101, 201, Building A and Room 301, Building C, Juli Industrial Park, Yabansuocuiwei, Shajing Street,
Baoan District, Shenzhen, Guangdong, China
Tel: (+86)755-82591332 E-mail: webmaster@lcs-cert.com Web: www.lcs-cert.com
Fax: (+86)755-82591332

[pdf] Test Report

TELEC LEO RADIO TEST REPORT For Shenzhen ankbit international Limited Bluetooth transmitter and
receiver 2 in 1 Trade Mark 1Mii Test Model ML301 Ratings 219 229207 02 007 tele soumu go jp giteki
SearchServlet2 PageID jt01 ATF 102462007 |||

Page 1 of 20 Report No.: LCSA082322016EB RADIO TEST REPORT For Shenzhen
ankbit international Limit ... al Model No. Model Declaration Power Supply Hardware
Version : ML301 , ML301Pro, ML301Pro , ML302, **ML302** , ML 302Pro, ML302Pro ,
RT238, RT6007Q1, ML300, ML300 , ML300Pro, ML300Pro , RT239 : PCB board...
lang:en score:18 filesize: 902.5 K page_count: 20 document date: 2022-09-20