



[Manuals.plus](#) /

> [novorik](#) /

> novorik 12-inch Double Bevel Compound Sliding Miter Saw User Manual

novorik XQJ001000

novorik 12-inch Double Bevel Compound Sliding Miter Saw User Manual

Model: XQJ001000 | Brand: novorik

1. INTRODUCTION

Thank you for choosing the novorik 12-inch Double Bevel Compound Sliding Miter Saw. This manual provides essential information for the safe assembly, operation, maintenance, and troubleshooting of your new tool. Please read this manual thoroughly before initial use and keep it for future reference. This miter saw is designed for precise cutting of various materials, including wood, plastic, and soft metals, offering versatility for your woodworking projects.

2. IMPORTANT SAFETY INSTRUCTIONS

Always follow basic safety precautions to reduce the risk of fire, electric shock, and personal injury. Failure to follow these instructions may result in serious injury or death.

- **Wear Eye Protection:** Always wear ANSI-approved safety goggles or safety glasses with side shields.
- **Wear Hearing Protection:** Use earplugs or earmuffs during operation to prevent hearing damage.
- **Keep Work Area Clean:** Cluttered areas invite accidents. Ensure your workspace is well-lit and free of obstructions.
- **Avoid Dangerous Environments:** Do not use power tools in damp or wet locations, or expose them to rain. Keep work area well-lit.
- **Keep Children Away:** All visitors should be kept a safe distance from the work area.
- **Secure Workpiece:** Always clamp or otherwise secure the workpiece to prevent movement during cutting.
- **Unplug Tool:** Disconnect the saw from the power source before making any adjustments, changing accessories, or performing maintenance.
- **Use Correct Blade:** Ensure the saw blade is appropriate for the material being cut and is sharp and undamaged.
- **Maintain Guards:** Keep all guards in place and in working order. Never operate the saw without guards.
- **Avoid Forcing Tool:** Allow the saw to cut at its own pace. Forcing it can lead to kickback or damage.
- **Proper Footing:** Maintain proper footing and balance at all times. Do not overreach.
- **Inspect Tool:** Before each use, check for damaged parts, misalignment, binding of moving parts, breakage of parts, and any other condition that may affect its operation.

3. PRODUCT OVERVIEW AND COMPONENTS

Familiarize yourself with the parts of your novorik miter saw before operation.

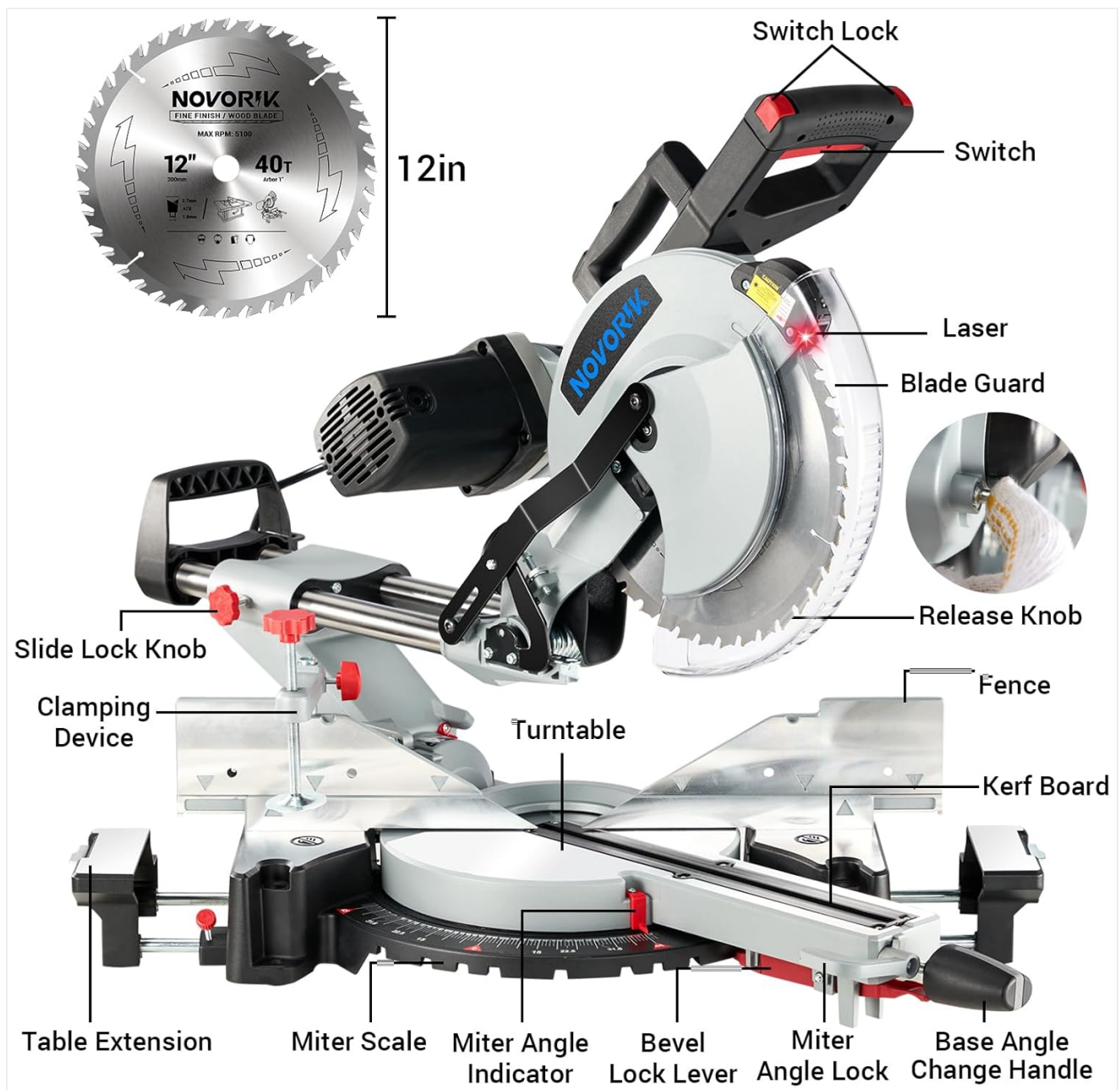


Figure 3.1: Labeled diagram showing key components of the miter saw, including the switch, laser, blade guard, release knob, fence, turntable, miter scale, bevel lock lever, and table extensions.

3.1 Package Contents

Upon unpacking, ensure all items are present and undamaged:

- novorik 12-inch Double Bevel Compound Sliding Miter Saw
- 12-inch TCT Saw Blade (for woodworking)
- Blade Wrench (for blade changes)
- Dust Bag
- Workpiece Clamp
- Instruction Manual



Figure 3.2: The novorik 12-inch Double Bevel Compound Sliding Miter Saw, shown with the included 12-inch TCT saw blade.

4. ASSEMBLY AND SETUP

4.1 Installing the Saw Blade

Ensure the saw is unplugged from the power source before installing or replacing the blade.

1. Raise the blade guard.
2. Loosen the guard plate bolt and raise the guard plate.
3. Loosen the arbor bolt by turning clockwise and remove the used saw blade (if applicable).
4. Place the new saw blade onto the arbor, ensuring the teeth are oriented correctly for cutting.
5. Tighten the arbor bolt by turning counter-clockwise.
6. Lower the guard plate and tighten the guard plate bolt.
7. Lower the blade guard.

HOW TO ADJUST MITER ANGLE ?

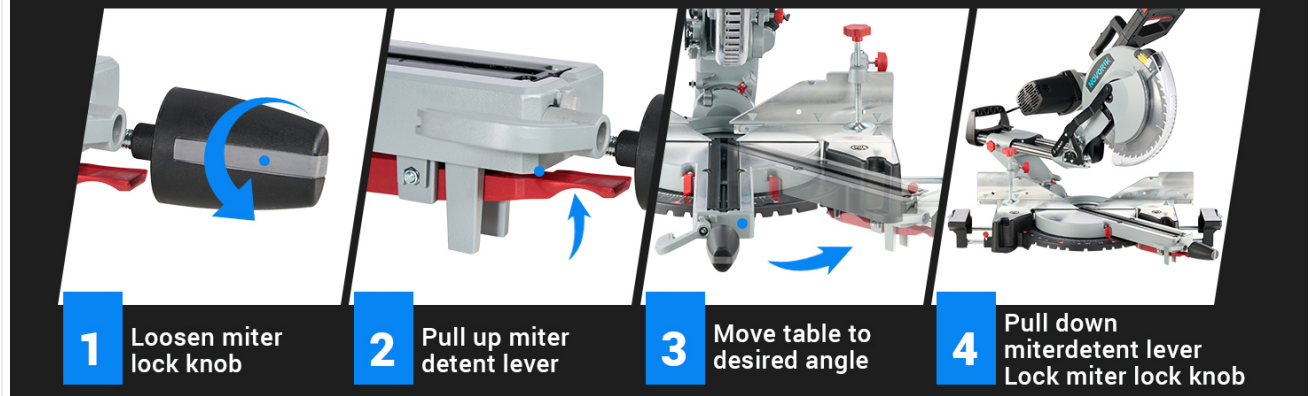


Figure 4.1: Visual guide for replacing the saw blade, detailing the steps from raising the guard to securing the new blade.

4.2 Adjusting Miter Angle

The miter saw allows for precise angle adjustments for miter cuts.

1. Loosen the miter lock knob.
2. Pull up the miter detent lever.
3. Move the turntable to the desired angle on the miter scale.
4. Push down the miter detent lever to lock into a preset stop, or tighten the miter lock knob for custom angles.

HOW TO ADJUST BEVEL ANGLE ?



Figure 4.2: Visual instructions for adjusting the miter angle, showing the loosening of the knob, pulling the lever, moving the table, and locking the angle.

4.3 Adjusting Bevel Angle

The saw head can be tilted for bevel cuts, with a free bevel range from -45° to 45° .

1. Lift up the bevel lock lever.
2. Adjust the saw head assembly to the desired angle on the bevel scale.
3. Push down the bevel lock lever to secure the saw head in position.

HOW TO REPLACE SAW BLADE ?

- 1 Raise up blade guard.
- 2 Loosen guard plate bolt and raise up guard plate.
- 3 Loosen the arbor bolt by turning clockwise and remove the used saw blade.
- 4 Put in the new saw blade and tighten the arbor bolt by turning anticlockwise.
- 5 Lower guard plate and tighten guard plate bolt.
- 6 Lower blade guard.



Figure 4.3: Visual instructions for adjusting the bevel angle, illustrating lifting the lever, tilting the saw head, and pushing the lever to lock.

DUAL BEVEL WITH 9 STOPS

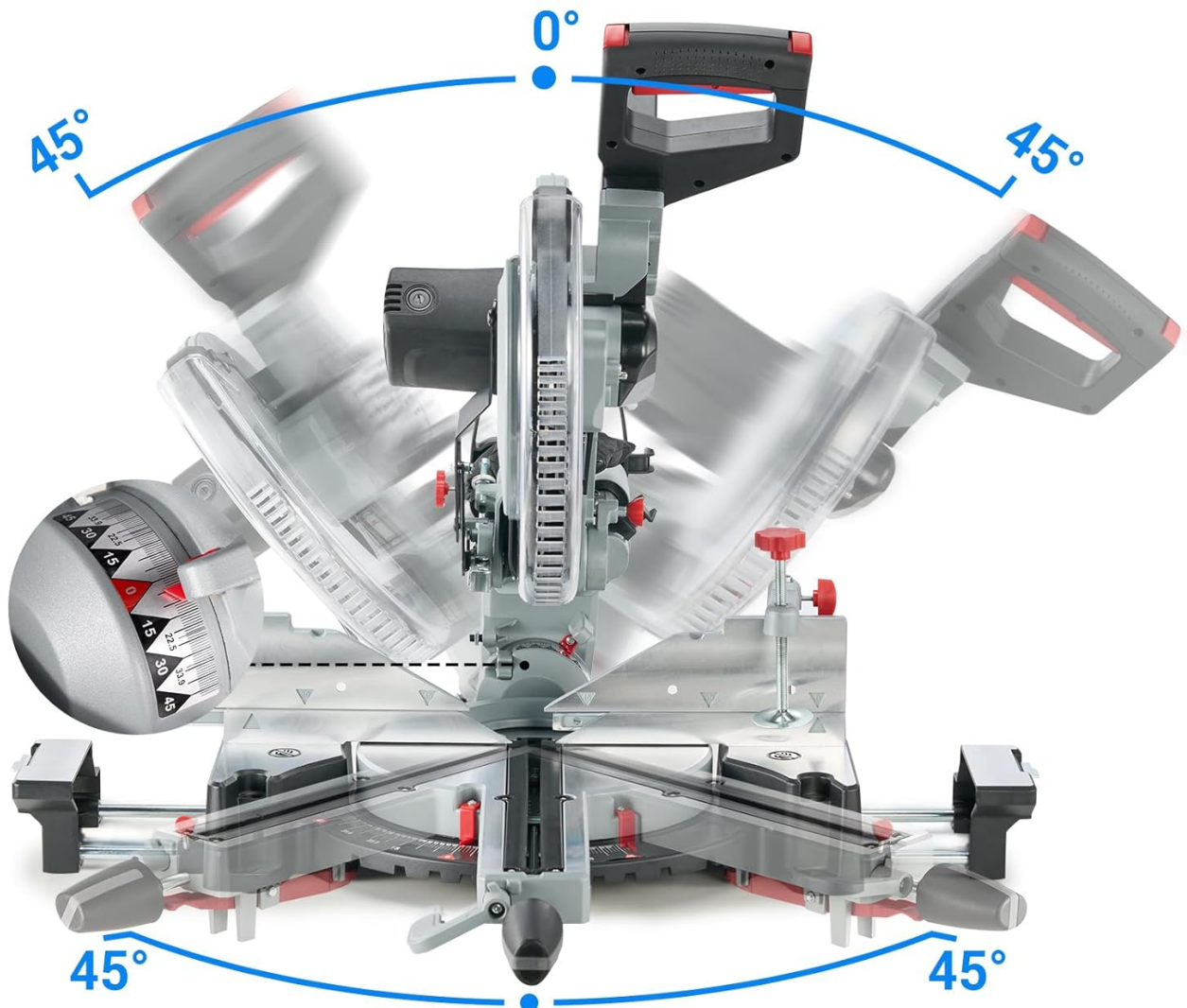


Figure 4.4: Illustration of the saw's dual bevel feature, allowing cuts from -45° to 45° with multiple stops for common angles.

5. OPERATING INSTRUCTIONS

5.1 General Operation

Before starting, ensure the workpiece is securely clamped and the saw blade is clear of any obstructions. The 15-Amp / 1800W motor provides a no-load speed of 4,000 rpm for efficient cutting.



Figure 5.1: The powerful 15-Amp motor, delivering 4000 RPM for effective cutting.

5.2 Laser Guide for Precision

The integrated laser guide projects a line onto your workpiece, indicating the exact cutting path. This feature assists in making precise and accurate cuts.



MAKE PRECISE CUTS WITH OUR LASER GUIDE

Figure 5.2: The laser guide in action, providing a clear visual line for precise cuts on a workpiece.

5.3 Cutting Capacities and Types

The novorik miter saw is capable of various cuts with specific capacities:

- **Straight Cuts (90°):** 4-1/4" x 13-5/8"
- **Max Bevel Cuts:** 2-1/4" x 13-3/8"
- **Max Miter Cuts:** 4-1/4" x 9-3/4"
- **Compound Cuts:** 2-1/4" x 9-3/4"



90° STRAIGHT
4-1/4" X 13-5/8"



45° MITER
4-1/4" X 9-3/4"



45° STRAIGHT BEVEL
2-1/4" X 13-3/8"



45° COMPOUND
2-1/4" X 9-3/4"

Figure 5.3: Visual representation of the saw's cutting capabilities for straight, miter, bevel, and compound cuts.

5.4 Compatible Materials

This miter saw is suitable for cutting a variety of materials. The included TCT saw blade is optimized for woodworking.

- Wood
- Plastic
- Soft Metal (with appropriate blade, not included)

CUT THROUGH WIDE RANGE OF MATERIALS

COMES WITH A SAW BLADE FOR WOOD CUTTING

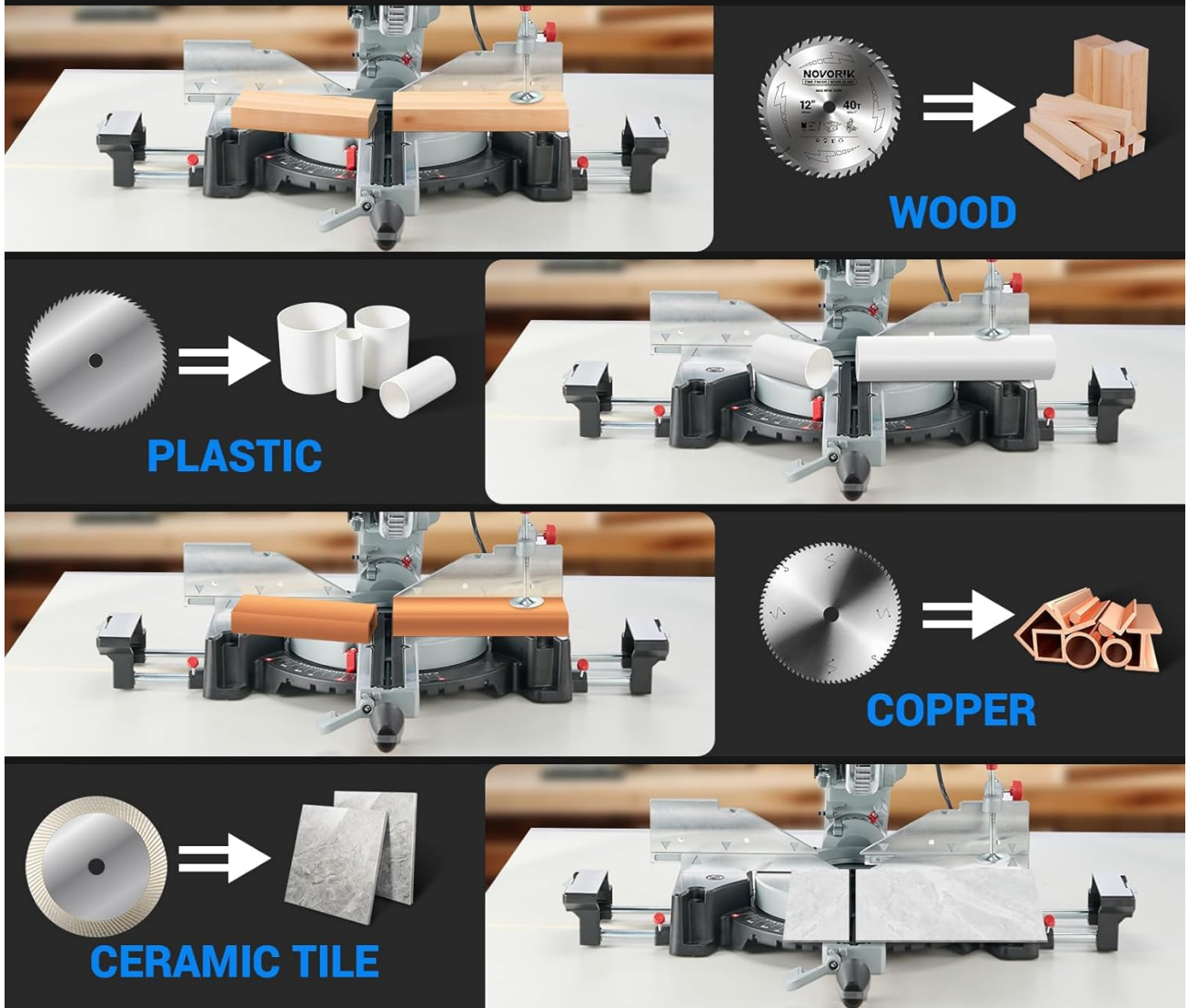


Figure 5.4: Examples of materials that can be cut with the miter saw, such as wood, plastic, and soft metals. Note: A different blade may be required for materials other than wood.

6. MAINTENANCE

Regular maintenance ensures the longevity and safe operation of your miter saw.

- **Cleaning:** After each use, unplug the saw and clean off sawdust and debris from the motor housing, blade guard, and work surface. Use a soft brush or compressed air.
- **Dust Extraction:** Connect a vacuum hose to the dust extraction port to keep your workplace clean and reduce airborne dust. Regularly empty the dust bag if used.
- **Blade Inspection:** Periodically inspect the saw blade for sharpness, cracks, or missing teeth. Replace dull or damaged blades immediately.
- **Moving Parts:** Keep all moving parts clean and lightly lubricated as recommended in the full service manual (if applicable).
- **Cord Inspection:** Check the power cord for any damage or fraying. Replace if necessary.

7. TROUBLESHOOTING

This section addresses common issues you might encounter. For problems not listed here, contact customer support.

Problem	Possible Cause	Solution
Saw does not start	No power supply; faulty switch; motor overload.	Check power connection; ensure switch is fully engaged; allow motor to cool down.
Inaccurate cuts	Blade dull or damaged; miter/bevel angle not locked; fence misalignment.	Replace blade; ensure angles are securely locked; check fence alignment.
Excessive vibration or noise	Loose blade; damaged blade; motor issue.	Tighten blade arbor bolt; replace damaged blade; contact service if motor issue persists.
Laser guide not visible	Laser lens dirty; laser module faulty.	Clean laser lens; contact service for replacement if faulty.

8. SPECIFICATIONS

Feature	Detail
Model Number	XQJ001000
Blade Diameter	12 Inches
Power Source	Corded Electric
Motor	15 Amp / 1800W
No-Load Speed	4,000 rpm
Voltage	120 Volts
Miter Range	-45° to 45° (9 stops)
Bevel Range	-45° to 45° (Dual Bevel)
Blade Material	Tungsten Carbide (TCT)
Product Dimensions	22"L x 20.4"W x 38"H
Item Weight	22 pounds (approx. 10 kg)
UPC	731052332879

9. WARRANTY AND SUPPORT

This novorik product comes with a Limited Warranty. For specific details regarding warranty coverage, terms, and conditions, please refer to the warranty card included with your product or contact novorik customer support. For technical assistance or service inquiries, please visit the official novorik website or contact their customer service department.

