

CCGIRU SFW1-500BOI-RC

CCGIRU 20-inch Remote Control Wall Mount Fan Instruction Manual

Model: SFW1-500BOI-RC

INTRODUCTION

Thank you for choosing the CCGIRU 20-inch Remote Control Wall Mount Fan. This manual provides essential information for the safe and efficient operation, installation, and maintenance of your fan. Please read this manual thoroughly before use and retain it for future reference.

This high-velocity fan is designed for optimal air circulation in various environments, including industrial settings, commercial spaces, covered patios, warehouses, workshops, and garages. It features dual control modes, multiple speed settings, a timer function, and adjustable oscillation and tilt for customized airflow.

IMPORTANT SAFETY INSTRUCTIONS

- Always ensure the fan is securely mounted to a stable wall structure before operation.
- Do not operate the fan with a damaged cord or plug. If the cord is damaged, it must be replaced by the manufacturer, its service agent, or similarly qualified persons to avoid a hazard.
- Keep hands, hair, clothing, and other objects away from the fan blades during operation to prevent injury.
- Unplug the fan from the power outlet before cleaning, servicing, or moving it.
- Do not use the fan in wet or damp locations, or near water. This fan is rated for indoor use.
- Ensure the power supply matches the voltage specified on the fan's rating label (120 Volts AC).
- This appliance has a 3-pin plug. Do not modify the plug or use an adapter that defeats the purpose of the grounding feature.
- Do not insert fingers or foreign objects into the grille.
- Supervise children when the fan is in use.

PACKAGE CONTENTS

Verify that all components are present and in good condition:

- Fan Head (with 3 aluminum blades and rust-resistant grilles)

- Wall Mounting Bracket
- Remote Control
- Screw Accessories (for mounting)
- User Manual (this document)



Image: The CCGIRU 20-inch Remote Control Wall Mount Fan, showing the fan unit and its accompanying remote control.

SETUP AND INSTALLATION

1. **Choose a Location:** Select a sturdy wall location capable of supporting the fan's weight (approximately 23.4 pounds). Ensure there is a power outlet within reach of the 9-foot power cord.
2. **Mounting the Bracket:** Using the provided screw accessories, securely attach the wall mounting bracket to a wall stud or appropriate anchor points. Ensure the bracket is level and firmly fixed.
3. **Attaching the Fan Head:** Carefully lift the fan head and attach it to the mounted bracket according to the instructions provided with the screw accessories. Ensure all connections are tight and secure.

4. **Power Connection:** Plug the fan's 3-pin power cord into a standard 120V AC grounded electrical outlet.

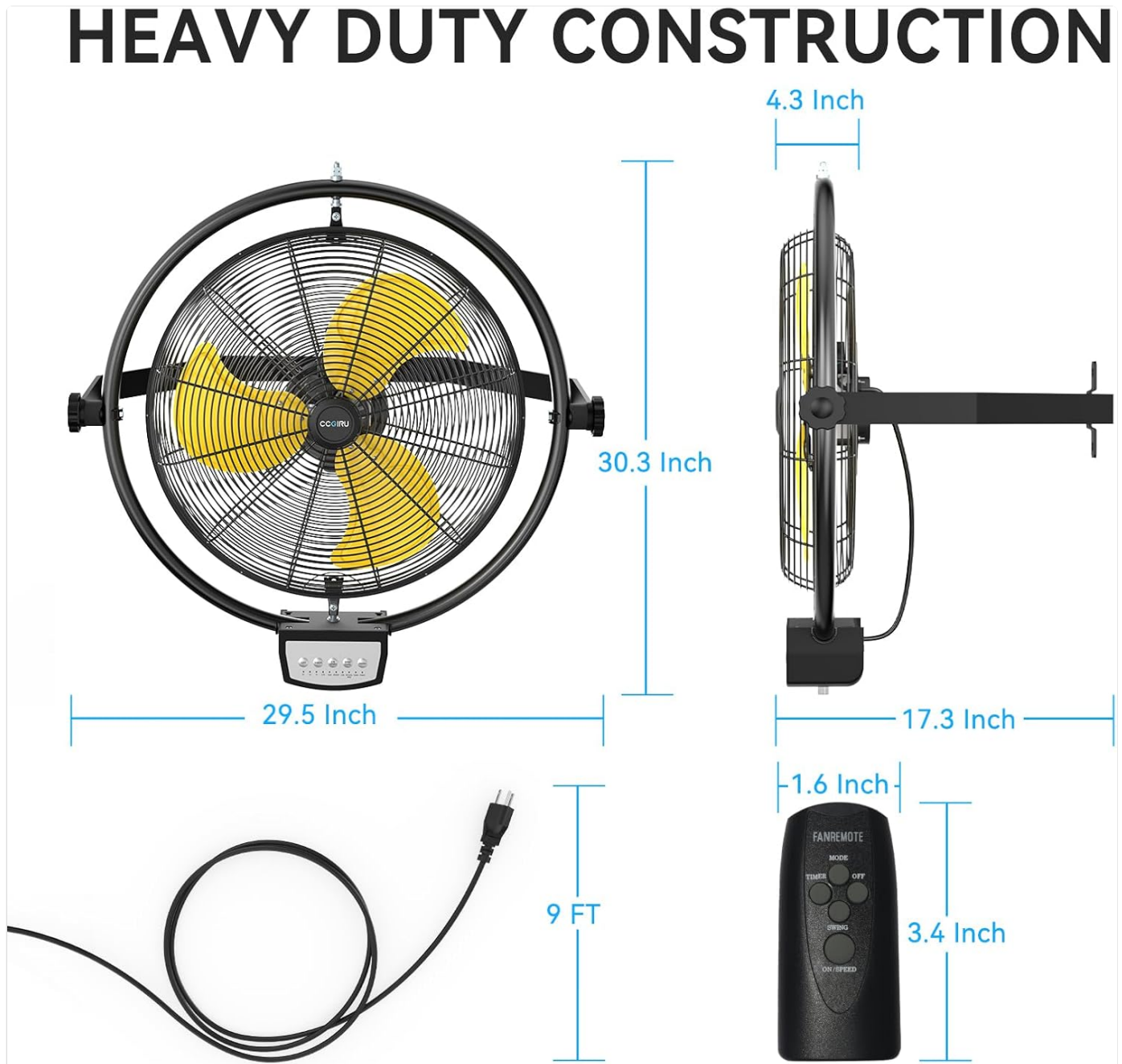


Image: Detailed dimensions of the fan and remote control, illustrating the heavy-duty construction and components.

OPERATING INSTRUCTIONS

Your CCGIRU wall mount fan offers both manual control via the integrated panel and convenient remote control operation.

1. Power On/Off

- **Manual:** Press the "ON/OFF" button on the fan's control panel.
- **Remote Control:** Press the "ON/OFF" button on the remote. The remote control has an effective range of up to 26.24 feet.

2. Speed Settings

The fan features three dynamic speed settings to adjust airflow:

- **High:** 5100 CFM (Cubic Feet Per Minute)

- **Medium:** 4400 CFM
- **Low:** 3900 CFM

Adjust the speed using the "ON/SPEED" button on the remote or the corresponding buttons on the control panel.

3 SPEED SETTINGS

Remote control to customize the airflow



High
5100 CFM



Mid
4400 CFM



Low
3900 CFM



Image: Visual representation of the fan's three speed settings and their corresponding airflow capacities.

3. Wind Modes

Select between two wind modes for customized comfort:

- **Normal Wind:** Provides a consistent, powerful airflow.
- **Natural Wind:** Simulates a natural breeze by varying fan speed.

Toggle between modes using the "MODE" button on the remote or control panel.

2 TYPES OF WIND



Image: Illustration of the two available wind modes: Normal and Natural.

4. Timer Setting

Set the fan to automatically turn off after a specified period:

- Available settings: 0.5 hours, 1 hour, 2 hours, 4 hours.
- The timer can be set for a maximum of 7.5 hours by combining these intervals.

Use the "TIMER" button on the remote or control panel to cycle through the timer options.

Remote Control Timer Settings

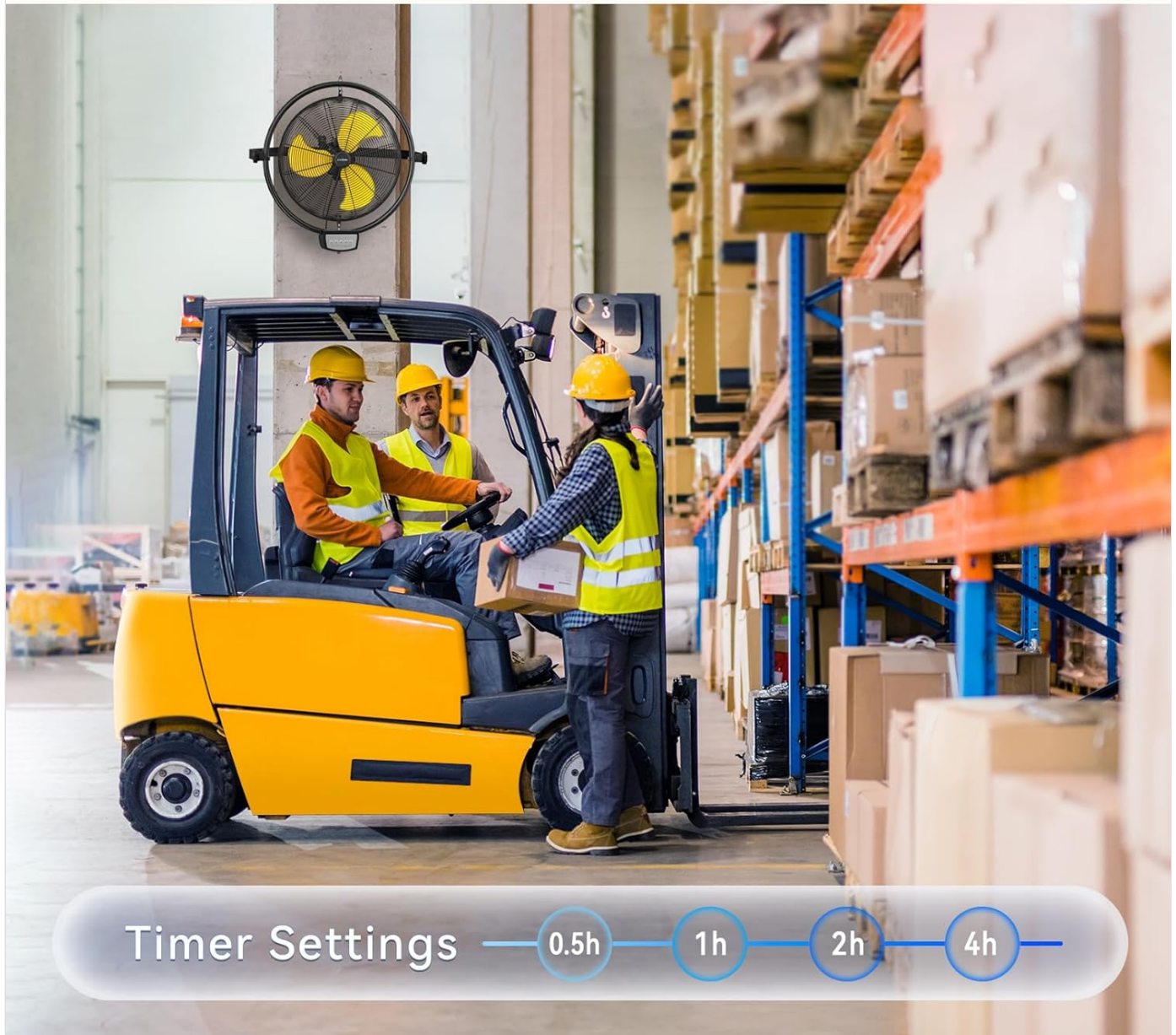


Image: Example of timer settings in use, showing the fan operating in a warehouse environment.

5. Oscillation and Tilting

- **Oscillation:** The fan features a 90° oscillation function to distribute air across a wider area. Activate or deactivate oscillation using the "SWING" button on the remote or control panel.
- **Tilting:** The fan head can be manually tilted up to 180° to direct airflow precisely where needed. Adjust the tilt by loosening the side knobs, positioning the fan, and then tightening the knobs securely.

WIDE-ANGLE OSCILLATION

Feeling cooling wherever you are

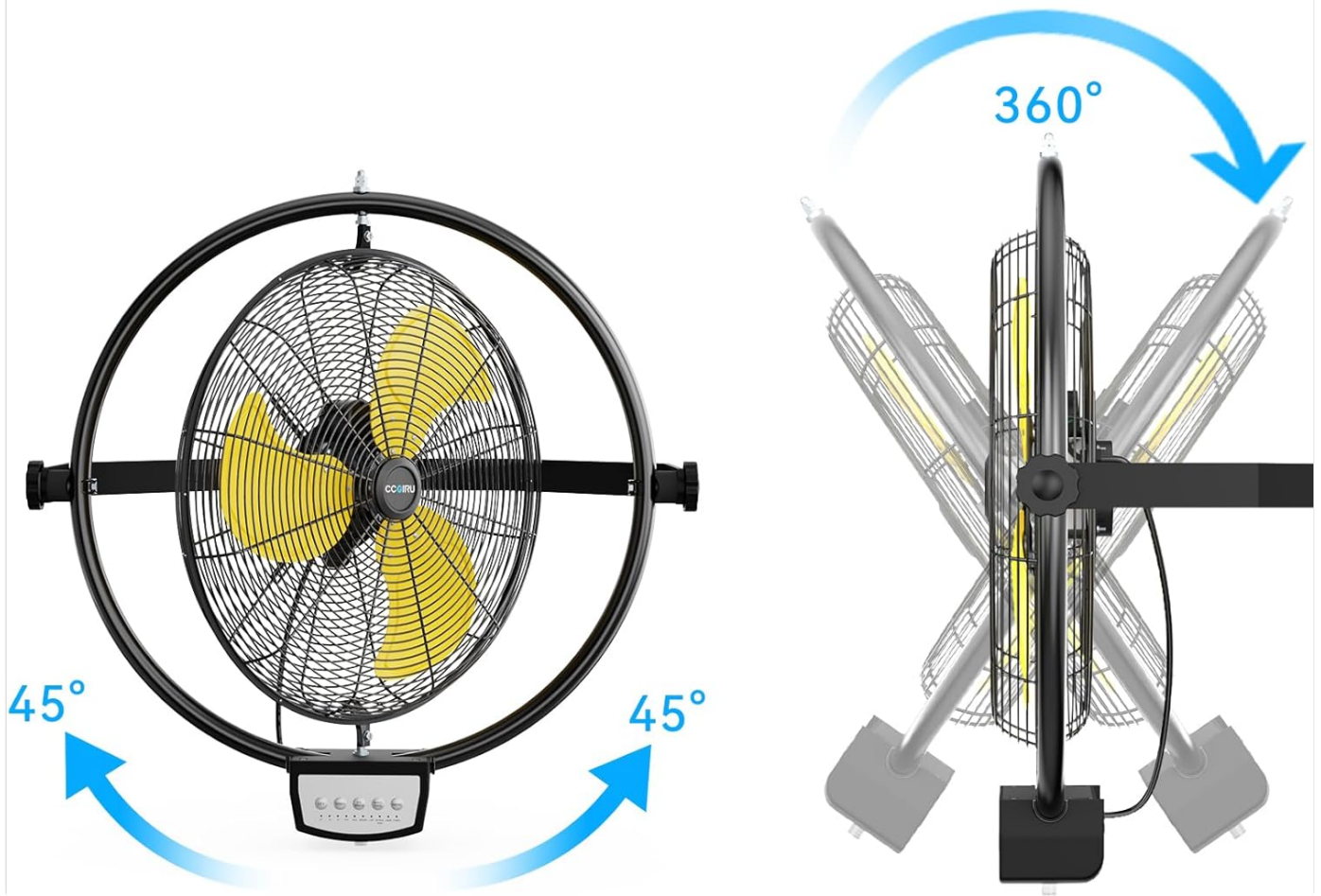


Image: Visual guide to the fan's oscillation and manual tilt capabilities.

MAINTENANCE

Regular maintenance ensures optimal performance and extends the lifespan of your fan.

- **Cleaning:**

- Always unplug the fan before cleaning.
- Use a soft, damp cloth to wipe down the exterior surfaces and grilles.
- For stubborn dirt, a mild soap solution can be used, followed by wiping with a clean, damp cloth.
- Do not use abrasive cleaners, solvents, or harsh chemicals, as these may damage the finish.
- Ensure the fan is completely dry before plugging it back in.

- **Blade Cleaning:** Periodically remove the front grille (if detachable) to clean the fan blades. Use a soft cloth or brush to remove dust and debris.

- **Storage:** If storing the fan for an extended period, unplug it, clean it thoroughly, and store it in a dry, cool place, preferably in its original packaging.

- **Inspection:** Regularly inspect the power cord and plug for any signs of damage. If damage is found, discontinue use and contact customer support.

TROUBLESHOOTING

Problem	Possible Cause	Solution
Fan does not turn on.	Not plugged in. Power outlet is not functioning. Remote control batteries are dead.	Ensure the power cord is securely plugged into a working outlet. Test the outlet with another appliance. Replace remote control batteries.
Weak airflow.	Fan speed is set too low. Grilles or blades are obstructed by dust/debris.	Increase the fan speed setting. Unplug the fan and clean the grilles and blades.
Excessive noise or rattling.	Loose components (grille, mounting). Fan is an industrial model, inherently louder than household fans.	Check and tighten all screws on the grille and mounting bracket. Ensure the fan is securely mounted. Note that this industrial fan operates at a noise level of 59 dB, which is typical for its category.
Remote control not working.	Batteries are dead or incorrectly inserted. Obstruction between remote and fan sensor. Beyond remote's operating range.	Replace batteries, ensuring correct polarity. Remove any obstructions. Operate within the 26.24 ft range.

SPECIFICATIONS

Brand	CCGIRU
Model Name	Wall Mounted Fans (SFW1-500BOI-RC)
Style	20" Remote
Product Dimensions	6"D x 27"W x 28"H
Item Weight	23.4 pounds
Power Source	AC
Voltage	120 Volts (AC)
Wattage	150 watts
Air Flow Capacity	5100 Cubic Feet Per Minute (CFM)
Number of Blades	3 (Aluminum)
Noise Level	59 dB
Control Method	Remote, Touch (Button Control)

Special Features	Adjustable Tilt, Oscillating, Remote Controlled, Timer
Indoor/Outdoor Usage	Indoor
Safety Certification	UL Listed

WARRANTY AND SUPPORT

For warranty information or technical support, please refer to the purchase documentation or contact CCGIRU customer service directly. Contact details are typically available on the product packaging or the official CCGIRU website.

When contacting support, please have your product model number (SFW1-500BOI-RC) and purchase date available.

