

DOOCK MC26

DOOCK Wireless Apple CarPlay Screen User Manual

Model: MC26

1. INTRODUCTION

This manual provides detailed instructions for the installation, operation, and maintenance of your DOOCK MC26 Wireless Apple CarPlay Screen. This 10.26-inch touchscreen car stereo integrates seamlessly with Apple CarPlay and Android Auto, featuring a 4K front dash camera and a 1080P rear camera for enhanced security and convenience. It supports navigation, mirror link, and loop recording, designed to provide a safe and connected driving experience.

2. PACKAGE CONTENTS

Before proceeding with installation, please verify that all items listed below are present in your package:

- 10.26-inch Wireless Apple CarPlay Screen Unit
- Power Supply Cable (for cigarette lighter connection)
- Rear Camera with Cable
- AUX Cable
- 64GB Memory Card (pre-installed)
- 3M Adhesive Pad
- User Manual



Image 2.1: Overview of the DOOCK MC26 Wireless Apple CarPlay Screen and its included components, such as the main unit, front and rear cameras, power cable, AUX cable, 64GB memory card, and 3M adhesive.

3. SETUP AND INSTALLATION

The DOOCK MC26 is designed for simple, non-destructive installation, preserving your vehicle's original radio setup.

3.1 Main Unit Installation

1. Select a suitable location on your dashboard for the main unit. Ensure it does not obstruct your view or interfere with vehicle controls.
2. Clean the dashboard surface where the unit will be mounted.
3. Attach the 3M adhesive pad to the base of the main unit's stand.
4. Securely press the unit onto the chosen dashboard location.
5. Connect the power supply cable to the main unit and plug the other end into your vehicle's cigarette lighter socket.

3.2 Rear Camera Installation

The IP6 waterproof rear camera can be installed inside or outside your vehicle.

1. Choose a mounting location for the rear camera, typically near the license plate or inside the rear window.
2. Route the rear camera cable from the camera to the main unit, ensuring it is securely tucked away and does not interfere with vehicle operation.
3. Connect the rear camera cable to the designated port on the main unit.
4. For automatic reverse image display, connect the rear camera's trigger wire (if present) to your vehicle's reverse light power supply. Consult a professional if unsure.



Image 3.1: The DOOCK MC26 unit mounted on a car dashboard, illustrating its compact design and easy placement without requiring console dismantling.

4. OPERATION

4.1 Wireless CarPlay & Android Auto

The unit supports seamless wireless connection to Apple CarPlay and Android Auto, providing access to navigation, calls, messages, and music directly from your smartphone.

1. Ensure Bluetooth and Wi-Fi are enabled on your smartphone.
2. On the MC26 unit, navigate to the CarPlay or Android Auto icon.
3. Follow the on-screen prompts to pair your smartphone via Bluetooth. Once paired, the unit will automatically establish a Wi-Fi connection for CarPlay/Android Auto functionality.

Support Wireless CarPlay & Android Auto



Image 4.1: Display modes for Wireless CarPlay, Wireless Android Auto, and Mirror Link, demonstrating the unit's versatile smartphone integration.

4.2 Voice Assistant (Siri/Google Assistant)

Control functions hands-free using voice commands through Siri or Google Assistant.

- Once connected to CarPlay or Android Auto, activate your voice assistant by saying the wake word (e.g., "Hey Siri" or "Hey Google") or by pressing the voice command button on the screen (if available).
- You can then issue commands for navigation, making calls, sending messages, playing music, and more.

Smart Voice Assistant

• • •

Easily access all phone features via wireless connection such as making phone calls, voice control, navigation, playing music, etc.



Hi Siri, "send message to Mom"

Hey Siri, "open the map"



Image 4.2: Illustration of the smart voice assistant feature, allowing hands-free control of navigation, communication, and media playback.

4.3 Audio Output Modes

The unit offers multiple audio output options for high-quality sound.

- **Built-in Speaker:** The unit has an integrated speaker for direct audio output.
- **Bluetooth:** Connect the unit to your car's existing audio system via Bluetooth for audio playback.
- **AUX Connection:** Use the provided AUX cable to connect the unit to your car's AUX input for wired audio transmission.

Bluetooth

Multiple Audio Output Modes



Built-in Speaker



AUX IN



Image 4.3: Visual representation of the various audio output options available, including Bluetooth, AUX connection, and the unit's built-in speaker.

4.4 DVR and Camera Functions

The unit is equipped with a 4K front camera and a 1080P rear camera for continuous recording and enhanced security.

- **Loop Recording:** The system continuously records footage to the pre-installed 64GB memory card. When the card is full, the oldest unlocked videos are automatically overwritten.
- **G-Sensor (Collision Sensor):** In the event of a sudden impact or collision, the built-in G-sensor will automatically detect the event and lock the current video footage, preventing it from being overwritten. Locked videos are marked with a lock icon on the display.
- **Reverse Image Assist:** When reverse gear is engaged, the unit automatically displays the rear camera feed with parking lines for safer maneuvering.

4K Dash Cam with 1080P Rear Camera

Equipped 4K HD front camera, 1080 AHD rear camera with 64G Memory Card, 1600*600 HD resolution touch screen and loop recording ensure important footage is saved



Locked
Video



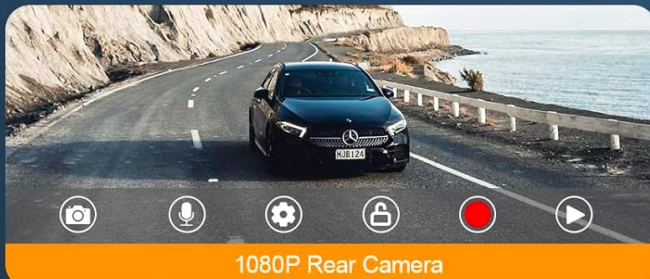
Video
Playback



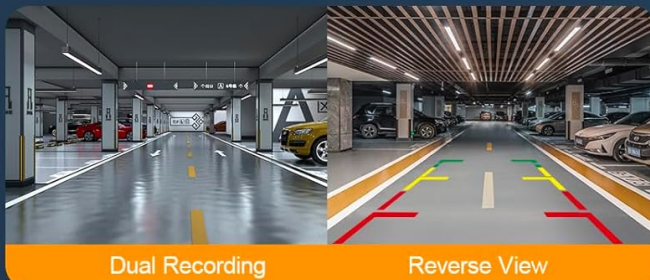
64GB
Memory card



4K Front Camera



1080P Rear Camera



Dual Recording

Reverse View



Image 4.4: Details on the 4K front and 1080P rear camera capabilities, highlighting features like locked video, video playback, and the included 64GB memory card.

Record Every Moment



G-Sensor

Lock crash videos without being overwritten

Loop Recording

Auto frees memory by overwriting unlocked videos



Reversing Image Assist

When reverse gear is engaged, the reversing image can be automatically switched

Image 4.5: Explanation of key recording features: G-Sensor for emergency video locking, loop recording for continuous capture, and reversing image assist for parking safety.

5. MAINTENANCE

To ensure the longevity and optimal performance of your DOOCK MC26 unit, follow these maintenance guidelines:

- **Cleaning:** Use a soft, dry, lint-free cloth to clean the screen and exterior of the unit. Avoid using abrasive cleaners, solvents, or aerosol sprays, as they may damage the surface.
- **Temperature:** Avoid exposing the unit to extreme temperatures, both hot and cold, for extended periods.
- **Cable Management:** Ensure all cables are properly routed and secured to prevent damage from pinching or snagging.
- **Memory Card:** Periodically format the memory card (e.g., once a month) to maintain optimal recording performance and prevent data corruption. Back up any important footage before formatting.

6. TROUBLESHOOTING

If you encounter issues with your DOOCK MC26 unit, refer to the following common problems and solutions:

- **Unit does not power on:**
 - Ensure the power cable is securely plugged into both the unit and the vehicle's cigarette lighter socket.
 - Check if the cigarette lighter socket is receiving power (e.g., by testing with another device).
- **No CarPlay/Android Auto connection:**
 - Verify that Bluetooth and Wi-Fi are enabled on your smartphone.
 - Ensure your phone is paired correctly via Bluetooth to the MC26 unit.
 - Restart both the MC26 unit and your smartphone.
- **Camera footage is unclear or distorted:**
 - Clean the camera lenses to remove any dirt or smudges.
 - Ensure the camera cables are securely connected.
- **Memory card error:**
 - Ensure the 64GB memory card is properly inserted.
 - Try formatting the memory card through the unit's settings.
 - If the issue persists, the memory card may be faulty and require replacement.

7. SPECIFICATIONS

Specifications & Packaging List

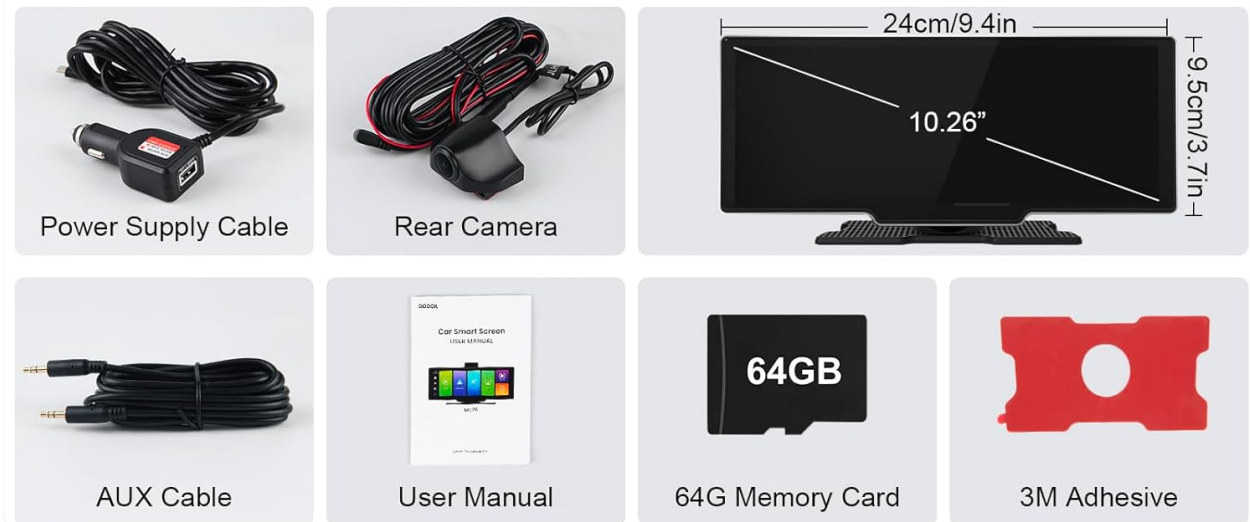


Image 7.1: Visual representation of the DOOCK MC26 unit's dimensions and a summary of the included package contents.

Feature	Description
Model Name	MC26
Screen Size	10.26 Inches (Visible screen diagonal: 11" / 27 cm)
Product Dimensions	9.5 x 3.7 x 4 inches
Item Weight	1.12 pounds
Front Camera	4K Resolution
Rear Camera	1080P Resolution, IP6 Waterproof, 170° Wide-Angle View
Memory Card	64GB (pre-installed)
Connectivity Technology	Auxiliary, Bluetooth, Wi-Fi

Audio Output Modes	Bluetooth, AUX IN, Built-in Speaker
Special Features	Wireless CarPlay, Android Auto, G-sensor, GPS Navigation, Screen Mirroring, Siri/Google Assistant Voice Control, Loop Recording, Reversing Image Assist
Mounting Type	Dashboard Mount
Vehicle Service Type	Car, Truck
Operating System Compatibility	Android, iOS

8. SUPPORT AND PROTECTION PLANS

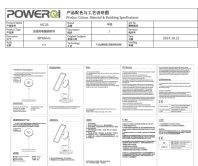
For any operational questions or technical assistance, please refer to the contact information provided with your product packaging or visit the official DOOCK support channels. Additionally, protection plans are available for purchase to extend coverage beyond the standard manufacturer's warranty. These plans offer added peace of mind for your investment:

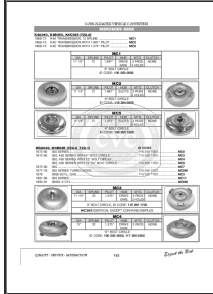
- 2-Year Protection Plan
- 3-Year Protection Plan
- Complete Protect (monthly subscription covering eligible purchases)

Details regarding these protection plans, including terms and conditions, can be found at the point of purchase or through the respective plan providers.

© 2024 DOOCK. All rights reserved.

Related Documents - MC26

	<p>POWERQI MC26 Qi2.0 Duo Wireless Charger - Product Specifications and Compliance</p> <p>Detailed specifications, features, safety notes, and FCC/CE compliance information for the POWERQI MC26 Qi2.0 Duo Wireless Charger, supporting simultaneous charging of phones, AirPods, and Apple Watch.</p>
---	---



[Mercedes-Benz Torque Converters: Consolidated Vehicle Converters Catalog](#)

A comprehensive catalog of Mercedes-Benz torque converters from Consolidated Vehicle Converters (CVC), detailing specifications, ID codes, and compatible vehicle models for various transmission series (722.2, 722.6, 722.9, etc.). Includes technical data for models MC1 through MC32.