

HARFO DA2H-BK

Harfo Fingerprint Smart Door Lock User Manual

Model: DA2H-BK | Brand: HARFO

1. INTRODUCTION

The Harfo Fingerprint Smart Door Lock provides advanced security and convenient keyless access for your home. This manual will guide you through the installation, setup, operation, and maintenance of your new smart lock, ensuring optimal performance and security.



Figure 1: Harfo Fingerprint Smart Door Lock and its components.

2. PACKAGE CONTENTS

Please verify that all components are present before beginning installation:

- APP Control Smart Deadbolt Lock
- Door Handlesets
- 3 IC Fobs (Cards)
- 2 Physical Keys
- User Manual
- Screw Accessories

3. KEY FEATURES

The Harfo Smart Door Lock offers multiple ways to access your home and enhanced security features:

- **Multiple Access Methods:** Unlock using Fingerprints, Mobile App, Passcodes, IC Cards, Physical Keys, or E-keys.
- **Biometric Fingerprint Access:** Quick and secure entry with a fingerprint scan. Supports up to 50 fingerprints.
- **APP Management:** Generate one-time, permanent, scheduled, or recurring passcodes. Manage access rights and view access logs. Supports up to 250 passcodes and 1000 IC cards (3 included).
- **Auto-Lock & One-Touch Locking:** Configurable auto-lock duration (5-900 seconds) or instant locking by pressing '#' on the keypad for 2 seconds.
- **Enhanced Security:** Features include Anti-Peeping Password, Privacy Mode, Passage Mode, Silent Mode, Anti-wrong password lockout, and an emergency power port.
- **Remote Control & Voice Control (Gateway Required):** When paired with a Harfo Gateway (sold separately), remotely unlock/lock your door, receive real-time notifications, and integrate with Alexa/Google Assistant for voice control.

Secure Smart Fingerprint Door Lock

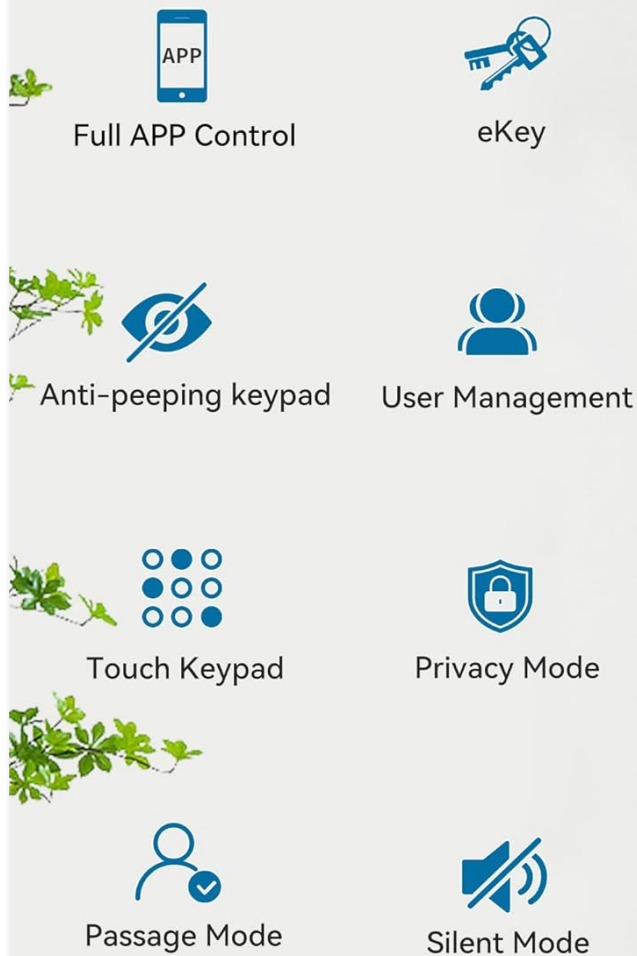


Figure 2: Overview of Smart Lock Features.

4. INSTALLATION GUIDE

The Harfo Smart Door Lock is designed for easy installation on most standard wooden doors. Ensure your door meets the following specifications:

- **Door Thickness:** 1.38 inches to 1.97 inches (35mm-50mm) thick.
- **Door Handing:** Works with both left and right-handed doors.
- **Door Holes:** Only suitable for 2-1/8 inches (5.4cm) door holes.

Important Note: The lock requires 4pcs 1.5V AA dry batteries (not included). Rechargeable batteries are not recommended as most have a voltage of 1.2V, which may affect performance.

Refer to the detailed step-by-step instructions provided in the included User Manual and the installation video (if available) for precise guidance. Ensure all screws are tightened securely but do not overtighten.

Fits on Most Standard Doors

✓ Left-Handed Door

✓ Right-Handed Door

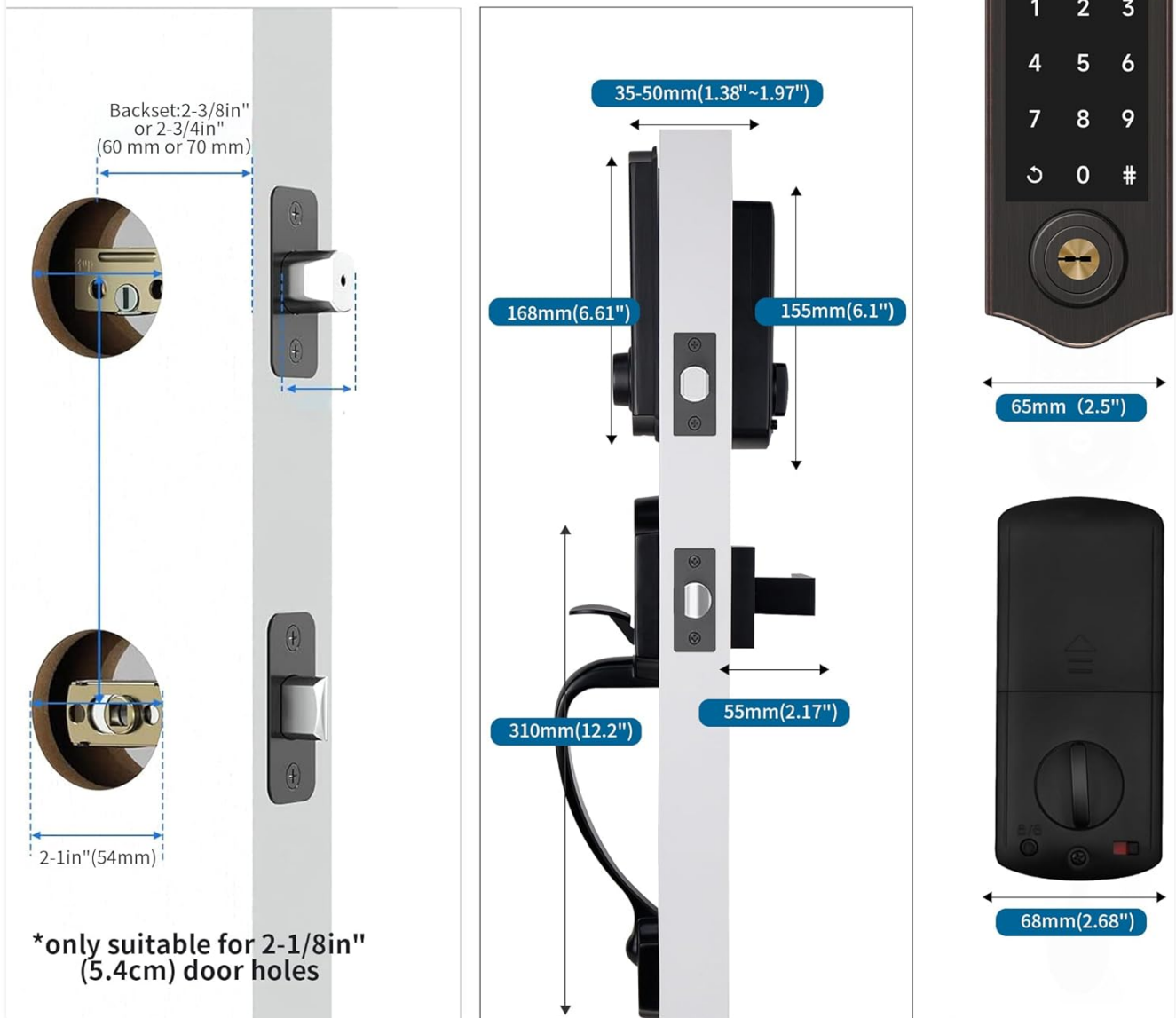


Figure 3: Door Compatibility and Dimensions.

5. OPERATION

5.1 Unlocking Methods

- **Fingerprint:** Place your registered finger on the fingerprint sensor. The lock will unlock instantly upon successful recognition.
- **Passcode:** Enter your registered passcode on the touchscreen keypad, then press '#'.
- **IC Card:** Tap your registered IC card against the designated area on the lock's keypad.
- **Physical Key:** Insert the physical key into the keyhole and turn to unlock.
- **App Control:** Use the dedicated mobile application to unlock the door (requires Bluetooth proximity or Harfo Gateway for remote access).



Figure 4: Multiple Ways to Access the Lock.

5.2 Locking Methods

- **Auto-Lock:** The lock will automatically engage after a set period (configurable between 5 and 900 seconds) once unlocked.
- **One-Touch Locking:** Press and hold the '#' button on the keypad for 2 seconds to instantly lock the door.
- **App Control:** Use the mobile application to lock the door.

Auto-lock & One-touch Locking

Press # button for 2 seconds to lock



Figure 5: Auto-Lock and One-Touch Locking.

5.3 Modes of Operation

- **Passage Mode:** Keeps the lock in an unlocked status for convenient entry and exit during high-traffic periods.
- **Privacy Mode:** Restricts all access except for the administrator code or physical key, enhancing security when desired.
- **Silent Mode:** Disables all sound notifications from the lock for quiet operation.

6. APP MANAGEMENT

The Harfo Smart Door Lock is managed via a dedicated mobile application, allowing for comprehensive control and monitoring:

- **User Management:** Add, modify, or delete fingerprints, passcodes, and IC cards for various users.
- **Passcode Generation:** Create different types of passcodes:
 - *One-Time:* For single use.

- *Permanent*: For continuous access.
- *Scheduled*: Valid only during specific times/days.
- *Recurring*: Valid for repeated intervals (e.g., every Monday).
- **E-key Sharing**: Share electronic keys with guests or service providers for temporary access.
- **Access Logs**: View a detailed history of who entered and when, providing an audit trail for security.



Figure 6: Viewing Access Records in the App.

7. REMOTE CONTROL & VOICE CONTROL

To enable remote control and voice assistant integration, a **Harfo Gateway (sold separately)** is required. Once connected, you can:

- **Remotely Unlock/Lock**: Control your door from anywhere via the app.
- **Real-Time Notifications**: Receive instant alerts on your smartphone when the door is unlocked or locked.
- **Voice Control**: Integrate with Amazon Alexa or Google Assistant to control the lock using voice commands.

Voice Control & Remotely Control



Work with Alexa



Work with Google Assistant

Alexa, lock my room door

Ok, locking the room door

Pair the lock with a gateway (sold separately) will enable you voice control & remotely control the lock

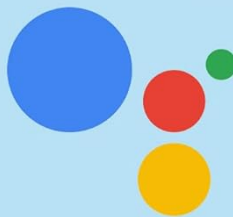


Figure 7: Voice Control with Smart Assistants (Gateway Required).

8. SECURITY FEATURES

The Harfo Smart Door Lock incorporates several features to enhance your home's security:

- **Anti-Peeping Password:** Enter random digits before or after your actual passcode to prevent others from guessing your code.
- **Anti-Cracking:** The lock will temporarily disable access after multiple incorrect password or fingerprint attempts, preventing brute-force attacks.
- **Emergency Power Port:** In case of battery depletion, a micro-USB port allows for temporary power supply using a power bank to unlock the door.

9. MAINTENANCE

To ensure the longevity and optimal performance of your Harfo Smart Door Lock, follow these maintenance guidelines:

- **Battery Replacement:** Replace batteries promptly when the low battery indicator appears. Use 4pcs 1.5V AA dry batteries. Do not mix old and new batteries or different battery types.
- **Cleaning:** Wipe the lock's exterior with a soft, dry cloth. Avoid abrasive cleaners or solvents that could damage the finish or electronic components.
- **Fingerprint Sensor:** Keep the fingerprint sensor clean and dry for accurate readings.
- **Regular Checks:** Periodically check that all screws are secure and the lock operates smoothly.

10. TROUBLESHOOTING

If you encounter issues with your Harfo Smart Door Lock, refer to the following common problems and solutions:

Problem	Possible Cause	Solution
Lock not responding / No power	Dead batteries	Replace with 4 new 1.5V AA dry batteries. Use emergency power port if locked out.
Fingerprint not recognized	Finger wet/dirty, sensor dirty, unregistered fingerprint	Ensure finger and sensor are clean and dry. Re-register fingerprint if issue persists.
Passcode not working	Incorrect code, anti-cracking lockout, temporary code expired	Verify passcode. Wait for lockout period to end. Check code validity in app.
App connectivity issues	Bluetooth off, app not updated, gateway disconnected (for remote)	Ensure Bluetooth is on. Update app. Check gateway connection and power.
Auto-lock not engaging	Passage mode active, auto-lock setting disabled	Deactivate Passage Mode. Verify auto-lock settings in the app.

11. SPECIFICATIONS

Specification	Detail
Brand	HARFO
Model Name	DA2H-BK
Lock Type	Biometric, Combination Lock, Deadbolt, Keypad
Material	Zics
Color	Black
Item Dimensions (L x W x H)	11 x 4 x 14 inches



Specification	Detail
Item Weight	4.49 pounds
Power Source	4 x 1.5V AA Dry Batteries (Not Included)
Connectivity Protocol	Bluetooth
Controller Type	App, Remote, Touch, Voice (with optional Gateway)
Special Features	Anti-Peeping Password, Auto-Lock, One-Touch Lock, Passcode Unlock, Weather Resistant

12. WARRANTY AND SUPPORT

For warranty information, technical support, or any inquiries regarding your Harfo Fingerprint Smart Door Lock, please contact HARFO customer service. Refer to the contact details provided on the product packaging or the official HARFO website.

Always ensure you are using official HARFO accessories and following recommended installation and usage guidelines to maintain warranty validity.

Related Documents

 <p>HARFO® HL20 series USER MANUAL</p>	<p>HARFO HL20 Series Smart Door Lock User Manual: Installation, Features, and Operation</p> <p>Comprehensive user manual for the HARFO HL20 series smart door lock, covering installation, fingerprint and password management, unlocking methods, alarm warnings, and after-sales service.</p>
 <p>HARFO® HL10 series USER MANUAL</p>	<p>HARFO HL10 Series User Manual</p> <p>User manual for the HARFO HL10 series door lock, providing instructions on installation, operation, and troubleshooting. Includes technical specifications and after-sales service information.</p>