

Manuals+

[Q & A](#) | [Deep Search](#) | [Upload](#)

manuals.plus /

› [ResMed](#) /

› [ResMed AirFit F40 Replacement Frame System User Manual](#)

ResMed AirFit F40

ResMed AirFit F40 Replacement Frame System User Manual

INTRODUCTION

This manual provides instructions for the ResMed AirFit F40 Replacement Frame System. The AirFit F40 is a full face mask frame system designed to offer high seal performance and comfort through a minimalist, flexible, and easy-to-use design. This product includes the frame system only; headgear is not included.



Image: The ResMed AirFit F40 Replacement Frame System, showcasing its minimalist design and clear components.

Key features include:

- **Minimalist Design:** Offers flexibility and comfort with a slim, low-profile structure.
- **Easy Application:** Features four adjustment points and magnetic clips for simple attachment and removal.
- **Secure Seal:** The soft silicone cushion adapts to the face, maintaining a secure seal even with movement during sleep.
- **Enhanced Comfort:** A fully flexible frame with fabric covers and strategically placed straps ensures a comfortable feel.
- **Quick Disconnect:** A quick-release elbow allows for fast and easy disconnection.

SAFETY INFORMATION

Important: Keep the mask magnets at a safe distance of at least 6 inches (150 mm) away from implants or medical devices that may be adversely affected by magnetic interference. This warning applies to you or anyone in close physical contact with your mask. The magnets are located in the frame and lower headgear clips, with a magnetic field strength of up to 400mT. When worn, they connect to secure the mask but may inadvertently detach while asleep.

COMPONENTS

The ResMed AirFit F40 Replacement Frame System includes the mask frame, cushion, and quick-release elbow. Please note that headgear is not included with this replacement system and must be acquired separately if needed.

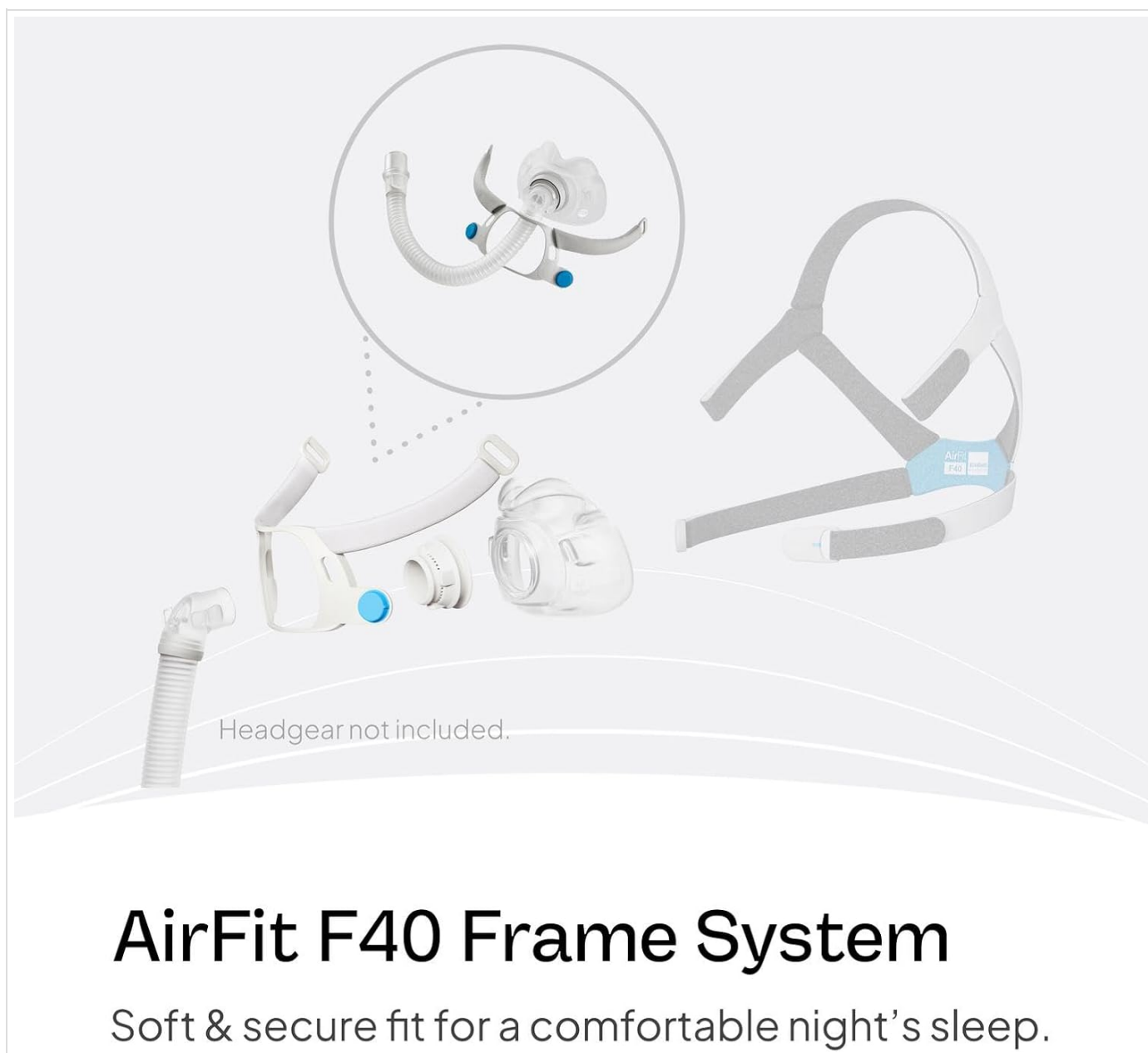
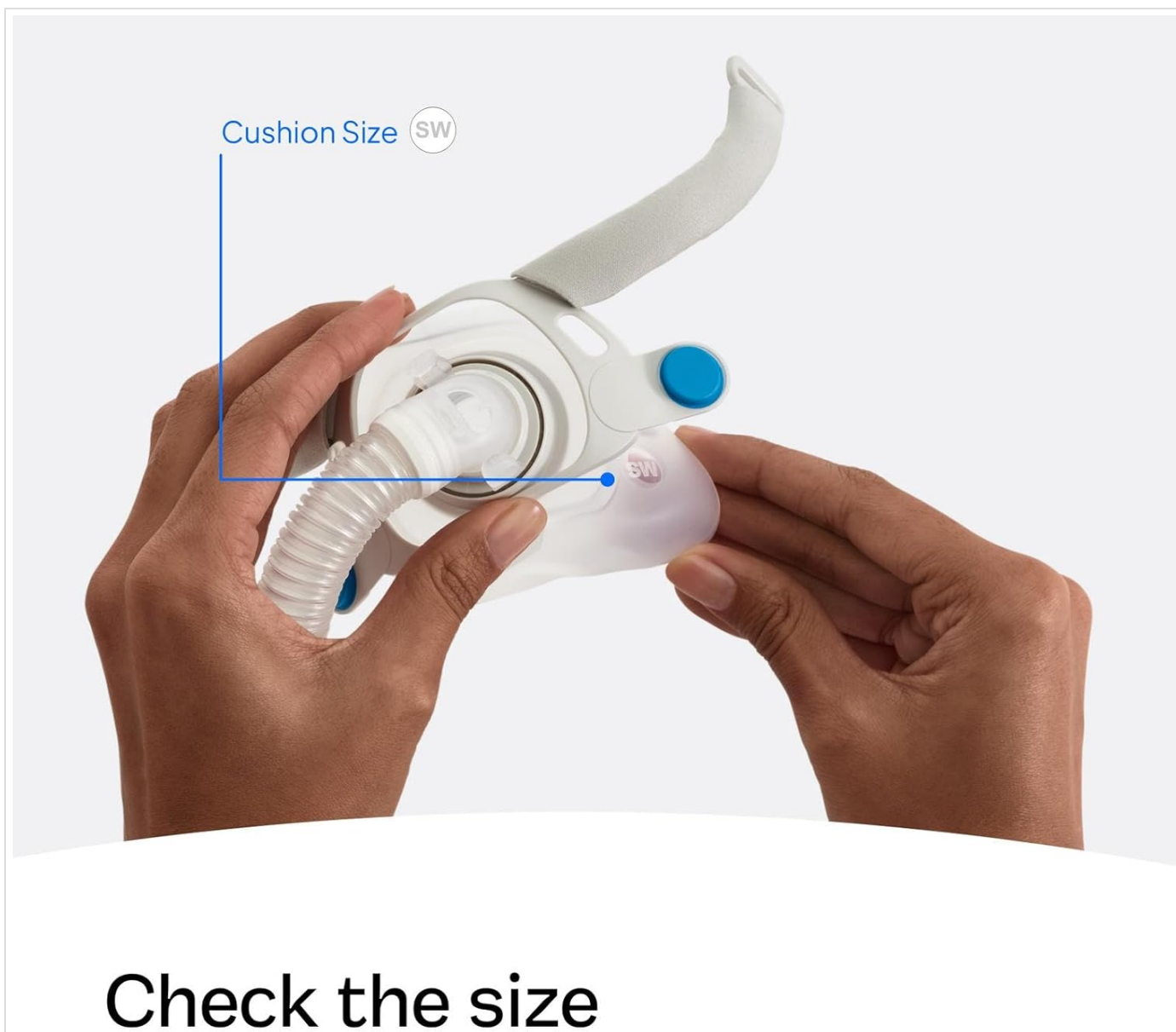


Image: An exploded view illustrating the individual components of the AirFit F40 mask system, including the frame, cushion, and elbow. Headgear is shown separately and is not part of this frame system.

SETUP AND ASSEMBLY

To set up your AirFit F40 frame system, ensure all components are clean and dry. Attach the cushion to the frame, aligning the connection points. If using existing headgear, connect it to the four adjustment points on the frame. The magnetic clips facilitate easy attachment and detachment of the headgear.



Check the size

Image: Hands demonstrating how to check the cushion size (SW for Small Wide) on the AirFit F40 mask, ensuring proper fit. The quick-release elbow connects the mask to your CPAP tubing. To disconnect, simply press the clips on either side of the elbow. This design is intended for ease of use and quick removal.

OPERATION AND USAGE

Once assembled and connected to your CPAP device, position the mask on your face. The soft silicone cushion is designed to conform to your facial contours, providing a secure seal. Adjust the headgear (if applicable) to achieve a comfortable and stable fit without overtightening. The flexible frame and high-cheek strap placement contribute to overall comfort during sleep, even with movement.



Ultra-compact design

Combines high seal performance with comfort in a minimalist, flexible and easy-to-use design.

Image: A woman demonstrating the wear of the ResMed AirFit F40 mask, highlighting its ultra-compact design and how it sits on the face.

MAINTENANCE AND CLEANING

Regular cleaning of your AirFit F40 frame system is essential for hygiene and optimal performance. Follow these daily cleaning steps:

- Soak the frame system in warm water with a mild liquid detergent.
- Shake vigorously in the water and hand wash with a soft bristle brush to remove any residue.
- Thoroughly rinse all components under running water.
- Squeeze the fabric on the frame to remove excess water.
- Leave the components to air dry out of direct sunlight before reassembly.

Caring for your AirFit F40 frame system daily*

- ✓ Soak in warm water with mild liquid detergent
- ✓ Shake vigorously in the water and hand wash with a soft bristle brush
- ✓ Thoroughly rinse under running water
- ✓ Squeeze the fabric on the frame to remove excess water
- ✓ Leave to air dry out of direct sunlight

*Please refer to the Mask User Guide for full weekly cleaning instructions.

Image: A visual guide detailing the daily cleaning process for the AirFit F40 frame system, including soaking, washing, rinsing, squeezing, and air drying.

REPLACEMENT TIPS

To maintain optimal performance and hygiene, it is recommended to replace your AirFit F40 frame system every 3 months. Signs that indicate it may be time to replace your mask components include:

- Cracks in the frame or cushion.
- Tears in the silicone cushion or fabric components.
- Other visible signs of deterioration, such as discoloration or loss of elasticity.

Replacement tip

We recommend replacing your frame system **every 3 months**



Signs it might be time to replace your mask:

- Cracks
- Tears
- Other visible signs of deterioration

Image: The AirFit F40 mask system with a recommendation to replace the frame system every 3 months, alongside a list of signs indicating replacement is due.

TROUBLESHOOTING

If you experience issues with your AirFit F40 frame system, consider the following:

- **Air Leaks:** Ensure the cushion is properly seated on your face and the headgear (if used) is adjusted for a snug, but not overly tight, fit. Check the cushion for any tears or damage that might compromise the seal.
- **Discomfort:** Re-adjust the headgear to relieve pressure points. Ensure the mask size is appropriate for your face.
- **Difficulty Breathing:** Check that the quick-release elbow is securely connected and that your CPAP tubing is not kinked or obstructed.

For persistent issues or concerns, consult your healthcare professional or refer to the complete ResMed user guide for your specific mask system.

SPECIFICATIONS

Product Dimensions	6.85 x 3.94 x 13.58 inches
Weight	2.88 ounces
Manufacturer	ResMed
ASIN	B0D7N25676





LEGAL DISCLAIMER

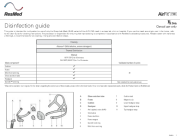

Masks with magnetic components are contraindicated for use by patients where they, or anyone in close physical contact while using the mask, have the following: Active medical implants that interact with magnets (i.e., pacemakers, implantable cardioverter defibrillators (ICD), neurostimulators, cerebrospinal fluid (CSF) shunts, insulin/infusion pumps) Metallic implants/objects containing ferromagnetic material (i.e., aneurysm clips/flow disruption devices, embolic coils, stents, valves, electrodes, implants to restore hearing or balance with implanted magnets, ocular implants, metallic splinters in the eye).

SUPPORT

For further assistance, product information, or to purchase additional components, please visit the [ResMed Store](#) or contact ResMed customer support directly.

Related Documents - AirFit F40

	<p>ResMed AirFit F40 CPAP Mask Fitting Template and Sizing Guide</p> <p>Accurately determine your ResMed AirFit F40 CPAP mask cushion size with this printable fitting template. Includes instructions and visual guides for optimal fit and comfort.</p>
	<p>ResMed AirFit F40 Full Face Mask User Guide</p> <p>Official user guide for the ResMed AirFit F40 full face mask. Learn about intended use, fitting, cleaning, safety warnings, and technical specifications for CPAP and PAP therapy.</p>
	<p>ResMed AirFit F40 CPAP Mask Fitting Template & Sizing Guide</p> <p>Download the ResMed AirFit F40 fitting template to accurately determine the correct cushion size for your CPAP mask. Includes instructions and visual guides for proper fitting.</p>
	<p>ResMed AirFit N30i & P30i Frame Fitting Instructions Guide</p> <p>Learn how to correctly fit your ResMed AirFit N30i nasal mask or AirFit P30i nasal pillow mask frame using this simple measurement guide. Find the right size for optimal comfort and therapy.</p>

	<p>ResMed AirFit F40 Disinfection Guide for Multi-Patient Use</p> <p>Detailed guide for cleaning and thermal disinfection of the ResMed AirFit F40 Sleep Lab Mask (SLM) for multi-patient re-use in clinical settings. Includes procedures, warnings, and component identification.</p>
	<p>ResMed AirFit N30i/P30i CPAP Mask Frame Fitting Guide</p> <p>ResMed AirFit N30i and P30i CPAP mask frame fitting instructions. Learn how to measure your face to select the correct mask frame size using a simple guide.</p>