

[Manuals.plus](#) /

› [HADEN](#) /

› Haden Dorset Electric Kettle and 2-Slice Toaster Instruction Manual

HADEN Dorset Kettle and Toaster

Haden Dorset Electric Kettle and 2-Slice Toaster Instruction Manual

Model: Dorset Kettle and Toaster

INTRODUCTION

Thank you for purchasing the Haden Dorset Electric Kettle and 2-Slice Toaster. This manual provides important information for the safe and efficient operation of your new appliances. Please read these instructions thoroughly before use and retain them for future reference.

DORSET
BLACK & COPPER

HADEN

Electric Kettle With 2-Slice Toaster



6 cup capacity
for house
or offices.



Water gauge allows
easy monitoring of
water level for
accuracy.



Convenient
cancel, defrost,
and bagel
settings.



Self-centering
function keeps
bread in the
perfect toasting
position.

Image: The Haden Dorset Electric Kettle and 2-Slice Toaster, showcasing their black and copper design.

IMPORTANT SAFETY INFORMATION

When using electrical appliances, basic safety precautions should always be followed to reduce the risk of fire, electric shock, and injury to persons, including the following:

- Read all instructions before use.
- Do not touch hot surfaces. Use handles or knobs.
- To protect against electrical hazards, do not immerse cord, plugs, or the appliance in water or other liquid.
- Close supervision is necessary when any appliance is used by or near children.
- Unplug from outlet when not in use and before cleaning. Allow to cool before putting on or taking off parts, and before cleaning the appliance.
- Do not operate any appliance with a damaged cord or plug, or after the appliance malfunctions or has been damaged in any manner.

- The use of accessory attachments not recommended by the appliance manufacturer may cause injuries.
- Do not use outdoors.
- Do not let cord hang over edge of table or counter, or touch hot surfaces.
- Do not place on or near a hot gas or electric burner, or in a heated oven.
- Always attach plug to appliance first, then plug cord into the wall outlet. To disconnect, turn any control to "off", then remove plug from wall outlet.
- Do not use appliance for other than intended use.
- Extreme caution must be used when moving an appliance containing hot liquid.

Kettle Specific Safety:

- Ensure the lid is securely closed before operating the kettle.
- Do not fill above the MAX line or below the MIN line.
- The kettle must only be used with the power base provided.
- Avoid contact with steam escaping from the spout or lid during and after boiling.
- This kettle is equipped with boil-dry protection. If the kettle boils dry, it will automatically switch off. Allow it to cool before refilling.

Toaster Specific Safety:

- Do not place oversized foods, metal foil packages, or utensils in the toaster.
- Bread may burn. Therefore, toasters must not be used near or below curtains and other combustible materials.
- Do not operate the toaster without the crumb tray in place.
- Always unplug the toaster when not in use.

PRODUCT OVERVIEW

Electric Kettle Components:

- Spout with removable filter
- Lid
- Handle
- Water level gauge
- Temperature gauge
- Power switch with indicator light
- 360-degree rotational power base

HADEN



Premium coated stainless steel housing.



Automatic shut off upon reaching boiling point with boil-dry protection.



Removable filter for convenient cleaning and maintenance.



360°

360-Degrees Base ensures stability and prevents tipping.

Image: Detailed view of the kettle's temperature gauge, removable filter, and 360-degree base.

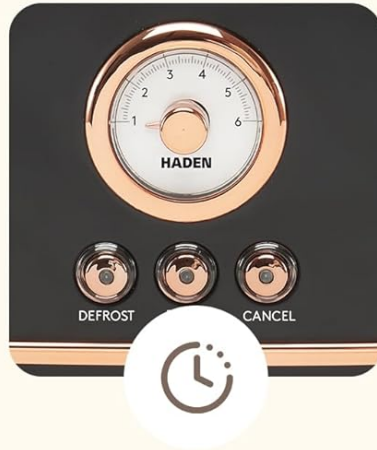
2-Slice Toaster Components:

- Wide toasting slots
- Browning control dial (1-6 settings)
- Defrost button
- Bagel button
- Cancel button
- Toast lever
- Removable crumb tray

HADEN



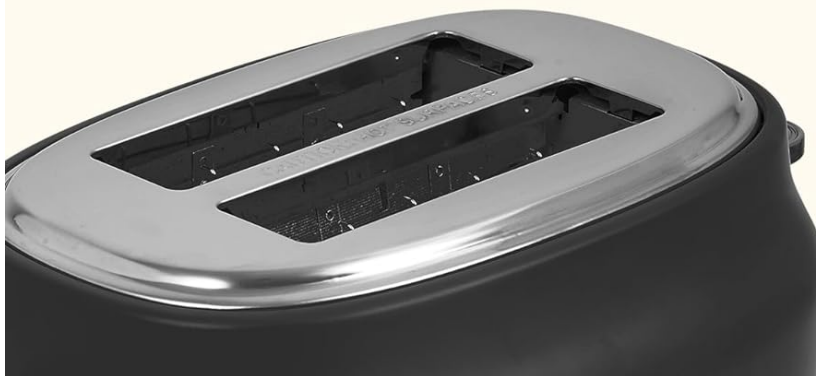
Premium coated stainless steel housing.



The browning control dial allows you to select the perfect timing for your bread, bagel or waffle.



Easy to clean with its removable sliding crumb tray.



Extra wide slots to accommodate thick slices of bread.

Image: Detailed view of the toaster's browning control dial, function buttons, and removable crumb tray.

SETUP

Unpacking:

Carefully remove all packaging materials from the kettle and toaster. Ensure all components are present and undamaged. Dispose of packaging responsibly.

Initial Cleaning:

Before first use, wipe the exterior of both appliances with a damp cloth. For the kettle, fill it with fresh water to the MAX line, boil, then discard the water. Repeat this process 2-3 times to remove any manufacturing residues. For the toaster, operate it empty on the highest setting a few times to burn off any manufacturing odors. Ensure adequate ventilation during this process.

Placement:

Place both appliances on a stable, flat, heat-resistant surface, away from the edge of the countertop. Ensure there is sufficient space around the appliances for ventilation, especially above the toaster to allow heat to escape. Keep away from curtains or other flammable materials.

OPERATING INSTRUCTIONS

Electric Kettle:

1. **Fill the Kettle:** Open the lid and fill the kettle with the desired amount of fresh water. Do not fill above the MAX (1.7L) mark or below the MIN mark.
2. **Place on Base:** Close the lid securely. Place the kettle onto its 360-degree power base.
3. **Connect Power:** Plug the power base into a standard 120V AC electrical outlet.
4. **Boil Water:** Press the power switch down. The indicator light will illuminate, indicating the kettle is heating.
5. **Automatic Shut-off:** The kettle will automatically switch off once the water has reached boiling point. The indicator light will turn off.
6. **Pouring:** Carefully lift the kettle from the base and pour the hot water.



Image: Close-up of the kettle's water level indicator and the power switch.

2-Slice Toaster:

1. **Place Bread:** Insert slices of bread, bagels, or waffles into the wide toasting slots. The self-centering function will hold them in place.
2. **Set Browning Level:** Turn the browning control dial to your desired setting (1 for light, 6 for dark).
3. **Lower Lever:** Push the toast lever down until it locks into place. The toaster will begin toasting.
4. **Function Buttons:**
 - **Defrost:** Press this button to toast frozen items. The defrost indicator light will illuminate.
 - **Bagel:** Press this button for toasting bagels, which toasts the cut side and warms the other. The bagel indicator light will illuminate.
 - **Cancel:** Press this button at any time to stop the toasting cycle and eject the toast. The cancel indicator light will illuminate when the toaster is active.
5. **Completion:** Once the toasting cycle is complete, the toast will automatically pop up.

HADEN

Toasty Mornings

Extra wide slots to accommodate thick slices of bread.

Non-slip rubberized feet provide stability.

Self-centering function that keeps bread in the perfect toasting position.



Image: The Haden Dorset 2-Slice Toaster with bread inserted into its wide slots.

MAINTENANCE AND CLEANING

Always unplug both appliances from the power outlet and allow them to cool completely before cleaning.

Exterior Cleaning:

Wipe the exterior surfaces of the kettle and toaster with a soft, damp cloth. Do not use abrasive cleaners or scouring pads, as these can damage the finish. Ensure no water enters the electrical components.

Kettle Descaling:

Over time, mineral deposits (limescale) may build up inside the kettle, affecting performance. To descale:

1. Fill the kettle with a mixture of one part white vinegar and two parts water, or use a commercial descaling solution according to its instructions.
2. Bring the mixture to a boil and then let it stand for at least 30 minutes, or longer if scale is heavy.
3. Empty the kettle and rinse thoroughly with fresh water several times.
4. The removable filter can also be cleaned by rinsing under running water and gently brushing away any deposits.

Toaster Crumb Tray:

To prevent crumb buildup and potential fire hazards, regularly empty the crumb tray.

1. Ensure the toaster is unplugged and completely cool.
2. Pull out the removable crumb tray located at the bottom of the toaster.
3. Discard crumbs and wipe the tray clean with a damp cloth.
4. Slide the crumb tray back into place until it locks securely.

TROUBLESHOOTING

Problem	Possible Cause	Solution
Kettle does not heat.	Not plugged in; power switch not pressed; kettle not properly seated on base; boil-dry protection activated.	Check power connection; press power switch; ensure kettle is correctly placed on base; if boil-dry activated, allow to cool and refill.

Problem	Possible Cause	Solution
Toaster does not operate.	Not plugged in; toast lever not pushed down completely.	Check power connection; push toast lever down until it locks.
Toast is too light/dark.	Browning control setting is incorrect.	Adjust the browning control dial to a higher setting for darker toast or a lower setting for lighter toast.
Smoke coming from toaster.	Food lodged in slots; crumb tray full; excessive browning.	Unplug and allow to cool, then carefully remove any food; empty crumb tray; reduce browning setting.

SPECIFICATIONS

- **Brand:** HADEN
- **Model:** Dorset Kettle and Toaster
- **Kettle Capacity:** 1.7 Liters (approximately 7 cups)
- **Material:** Stainless Steel
- **Color:** Black & Copper
- **Voltage:** 120 Volts
- **Wattage:** 1500 watts (Kettle)
- **Kettle Dimensions (L x W x H):** 11.75" x 9.5" x 7"
- **Toaster Slot Dimensions (L x W x H):** 138mm x 38mm x 145mm (approx. 5.4" x 1.5" x 5.7")
- **Product Care:** Hand wash, Wipe clean

HADEN

6
CUPS



Image: Diagram showing the dimensions of both the Haden Dorset Electric Kettle and 2-Slice Toaster.

WARRANTY AND SUPPORT

This Haden Dorset Electric Kettle and 2-Slice Toaster comes with a manufacturer's warranty. Please refer to the warranty card included in your product packaging for specific terms and conditions, including the duration of coverage and what is covered.

For technical support, service, or to inquire about replacement parts, please contact Haden customer service. Contact details can typically be found on the manufacturer's website or on the warranty card.

Please note: Do not attempt to repair the appliance yourself. Unauthorized repairs will void the warranty.

