

Manuals+

[Q & A](#) | [Deep Search](#) | [Upload](#)

[manuals.plus](#) /

- › [Altec Lansing](#) /
- › [Altec Lansing HYDRAJOLT 2.0 Magnetic Bluetooth Speaker User Manual](#)

Altec Lansing HydraJolt 2.0

Altec Lansing HYDRAJOLT 2.0 Magnetic Bluetooth Speaker User Manual

Model: HydraJolt 2.0

INTRODUCTION

Thank you for choosing the Altec Lansing HYDRAJOLT 2.0 Magnetic Bluetooth Speaker. This robust and versatile speaker is designed to deliver immersive sound in any environment, featuring IP67 waterproof, sandproof, snowproof, and shockproof capabilities. With its built-in magnets, extended battery life, and Party Sync feature, the HYDRAJOLT 2.0 is your ideal companion for music on the go. This manual provides essential information for setup, operation, maintenance, and troubleshooting to ensure optimal performance of your speaker.



The Altec Lansing HYDRAJOLT 2.0 speaker, showcasing its sleek design and multicolor LED lighting.

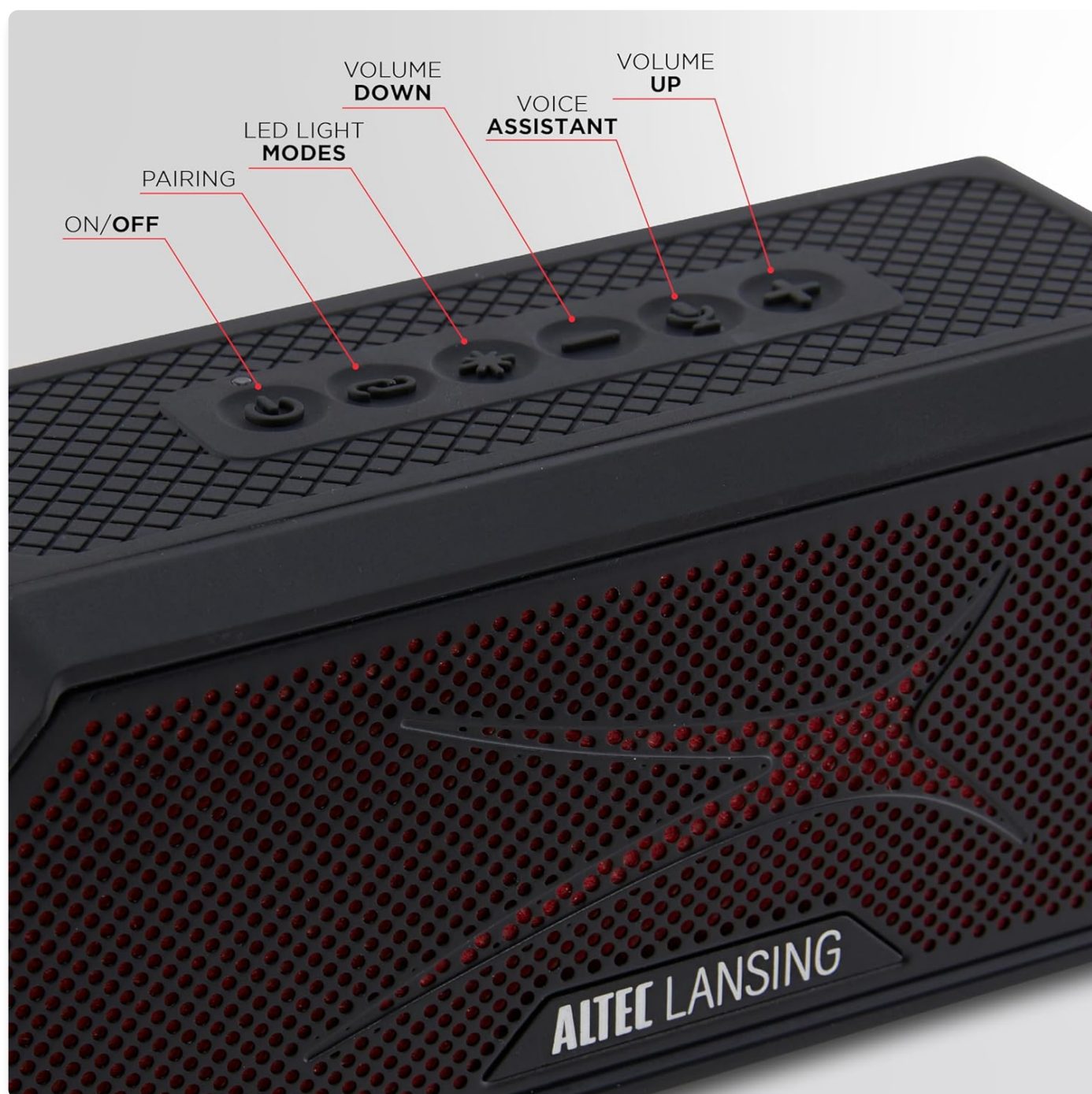
WHAT'S IN THE BOX

- Altec Lansing HYDRAJOLT 2.0 Speaker
- Standard Mount
- Carabiner
- Product Manual (this document)
- USB-C Charging Cable

PRODUCT OVERVIEW

Controls and Indicators

The HYDRAJOLT 2.0 features intuitive controls located on the top panel for easy access to all functions.



Detailed view of the speaker's control buttons.

- **On/Off Button:** Powers the speaker on or off.
- **Pairing Button:** Initiates Bluetooth pairing mode.
- **LED Light Modes Button:** Cycles through various multicolor LED lighting effects.
- **Volume Down Button:** Decreases audio volume.
- **Voice Assistant Button:** Activates your device's voice assistant (Siri or Google Assistant).
- **Volume Up Button:** Increases audio volume.

Charging Port

The USB-C charging port is located on the side of the speaker, protected by a waterproof cover. This port also supports built-in smartphone charging.



The USB-C input and USB-A output ports for charging and power bank functionality.

Mounting Features

The HYDRAJOLT 2.0 offers multiple versatile mounting options for various scenarios.

- **Strong Magnet:** A powerful built-in magnet allows the speaker to securely attach to most metal surfaces.



The speaker's strong magnet allows it to stick to metal surfaces.

- **Mountable Carabiner Clip:** Use the included carabiner to clip the speaker to bags, loops, or other attachment points.
- **Standard Mount:** The speaker is compatible with the included standard mount, ideal for attaching to bike handlebars, poles, or similar structures.



The speaker with its included mount and carabiner clip.

SETUP

Bluetooth Pairing

1. Ensure the speaker is fully charged before first use.
2. Press and hold the **On/Off** button to power on the speaker. You will hear an audible prompt.
3. The speaker will automatically enter Bluetooth pairing mode. The LED indicator will flash, indicating it is ready to pair.
4. On your device (smartphone, tablet, etc.), navigate to the Bluetooth settings.
5. Select "HYDRAJOLT 2.0" from the list of available devices.
6. Once successfully paired, the speaker will provide an audible confirmation, and the LED indicator will stop flashing and remain solid.
7. The speaker will automatically reconnect to the last paired device when powered on, if the device is within range.

OPERATING INSTRUCTIONS

Basic Operation

- **Power On/Off:** Press and hold the **On/Off** button.
- **Volume Control:** Press the **Volume Up** or **Volume Down** buttons to adjust the audio level.
- **Play/Pause:** Press the **Pairing** button once to play or pause music.
- **Skip Track:** Double-press the **Volume Up** button for next track, double-press **Volume Down** for previous track.
- **Voice Assistant:** Press the **Voice Assistant** button to activate Siri or Google Assistant on your connected device.
- **LED Light Modes:** Press the **LED Light Modes** button to cycle through different lighting effects.

Party Sync Mode

The Party Sync feature allows you to connect over 100 HYDRA speakers together for a synchronized audio experience.

1. Ensure all speakers are powered on and not connected to any Bluetooth device.
2. On the first speaker (the "master" speaker), press and hold the **Pairing** button until you hear a prompt indicating Party Sync mode is active.
3. On subsequent speakers, quickly double-press the **Pairing** button. They will search for the master speaker.
4. Once connected, all speakers will play audio in sync.
5. To disconnect a speaker from Party Sync, press and hold its **Pairing** button again.



MOUNTABLE
CARABINER CLIP
INCLUDED

UP TO
16
HOURS
PLAY TIME*



STRONG
MAGNET



FLOATS IN WATER



BUILT-IN
SMARTPHONE
CHARGER



HYPER-EDGE
LIGHTING MODES

Key features of the HYDRAJOLT 2.0, including its durability and connectivity options.

CHARGING

The HYDRAJOLT 2.0 speaker is equipped with a long-lasting battery providing up to 16 hours of playtime on a single charge.

- To charge the speaker, open the protective cover on the side to reveal the USB-C port.
- Connect the included USB-C charging cable to the speaker's USB-C port and the other end to a compatible USB power adapter (not included) or a computer's USB port.
- The LED indicator will show charging status (specific indicator behavior not detailed in product info, but common for charging).
- A full charge takes approximately 3 hours using USB-C quick charge.
- The speaker also features a built-in USB-A output port, allowing you to use it as a power bank to charge your smartphone or other small devices.

DURABILITY FEATURES

The HYDRAJOLT 2.0 is engineered for extreme environments, ensuring your music can go anywhere.

- **IP67 Waterproof:** The speaker is fully submersible in water up to 1 meter for 30 minutes and floats, making it ideal for pool parties, beach trips, or boating.
- **Sandproof:** Designed to resist sand ingress, ensuring functionality even in sandy conditions.
- **Snowproof:** Operates reliably in snowy and cold environments.
- **Shockproof:** Built to withstand drops and impacts, providing robust protection against accidental damage.



The speaker's robust construction is designed to withstand harsh conditions.

MAINTENANCE

- **Cleaning:** Wipe the speaker with a soft, damp cloth. Do not use harsh chemicals or abrasive cleaners. For sand or dirt, rinse gently with fresh water and allow to air dry completely before use or charging.
- **Storage:** Store the speaker in a cool, dry place away from direct sunlight and extreme temperatures.

- **Battery Care:** For optimal battery life, avoid fully discharging the battery frequently. Charge the speaker regularly, even if not in use for extended periods.

TROUBLESHOOTING

Problem	Possible Cause	Solution
Speaker does not power on.	Battery is depleted.	Charge the speaker using the USB-C cable.
Cannot pair with Bluetooth device.	Speaker is not in pairing mode; device's Bluetooth is off; speaker is already connected to another device; too far from speaker.	Ensure speaker is in pairing mode (flashing LED). Turn on Bluetooth on your device. Disconnect from other devices. Move device closer to speaker (within 100ft).
No sound or low volume.	Volume too low on speaker or device; speaker not connected; audio source issue.	Increase volume on both speaker and device. Ensure speaker is properly paired. Check audio source (e.g., music app).
Party Sync not working.	Speakers not in Party Sync mode; too far apart; already paired to individual devices.	Ensure all speakers are disconnected from individual Bluetooth devices. Follow Party Sync instructions carefully. Keep speakers within range of each other.

SPECIFICATIONS

Feature	Detail
Model Name	HydraJolt 2.0
Speaker Type	Outdoor
Special Features	Waterproof (IP67), Shockproof, Sandproof, Snowproof, Magnetic Mount, Multicolor LED
Connectivity Technology	Wireless (Bluetooth)
Bluetooth Range	Up to 100 feet (30.5 meters)
Speaker Maximum Output Power	12 Watts (6W x 2 RMS)
Battery Life	Up to 16 Hours
Charging Time	Approximately 3 Hours (USB-C Quick Charge)
Power Source	Battery Powered (1 Lithium Ion battery included)
Control Method	Buttons, Voice Assistant

Feature	Detail
Product Dimensions	7.6"D x 3.2"W x 4.6"H (19.3 cm x 8.1 cm x 11.7 cm)
Item Weight	1.7 Pounds (0.77 kg)
Material	Metal
UPC	021331127129


WARRANTY AND SUPPORT

The Altec Lansing HYDRAJOLT 2.0 speaker comes with a limited or extended warranty. For detailed warranty information, product registration, and technical support, please visit the official Altec Lansing website or contact their customer service.

[Visit the Altec Lansing Store on Amazon](#)

For further assistance, please refer to the contact information provided with your product packaging or on the official Altec Lansing support channels.

Related Documents - HydraJolt 2.0



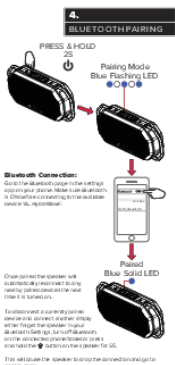
[Altec Lansing LifeJacket XL Jolt IMW790 Quick Start Guide](#)

Concise guide to setting up and using the Altec Lansing LifeJacket XL Jolt IMW790 rugged Bluetooth speaker, covering pairing, charging, house party mode, and music controls.



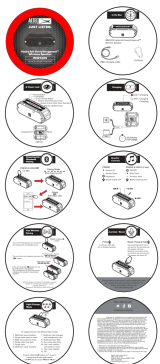
[Altec Lansing IMW1200 HydraJolt Wireless Speaker Quick Start Guide](#)

Quick start guide for the Altec Lansing IMW1200 HydraJolt Everythingproof Wireless Speaker, covering setup, pairing, controls, charging, and features.





[Altec Lansing AL HydraWave Bluetooth Speaker User Manual](#)

Comprehensive user manual for the Altec Lansing AL HydraWave Bluetooth Speaker, covering Bluetooth pairing, speaker controls, Party Sync, safety precautions, specifications, FCC statement, and warranty information.



[Altec Lansing IMW1200 HydraJolt Everythingproof Wireless Speaker Quick Start Guide](#)

Quick start guide for the Altec Lansing IMW1200 HydraJolt Everythingproof Wireless Speaker, covering setup, pairing, controls, and features.

	<p>Altec Lansing HydraJolt 2.0 EVERYTHINGPROOF Wireless Speaker Quick Start Guide & Manual</p> <p>Your guide to the Altec Lansing HydraJolt 2.0 EVERYTHINGPROOF Wireless Speaker. Learn about setup, controls, charging, Bluetooth pairing, safety precautions, specifications, and warranty.</p>
	<p>Altec Lansing ATP3 Computer Speaker System User Guide and Setup</p> <p>Comprehensive user guide for the Altec Lansing ATP3 computer speaker system, covering specifications, setup instructions, safety precautions, and control usage.</p>