



Manuals.plus /

› Aheaplus /

› Aheaplus 49-Inch L-Shaped Gaming Desk User Manual

## Aheaplus 49-Inch L-Shaped Gaming Desk (Model B0D7CMQ4TY)

# Aheaplus 49-Inch L-Shaped Gaming Desk

## USER MANUAL

### 1. Introduction

---

Thank you for choosing the Aheaplus 49-Inch L-Shaped Gaming Desk. This manual provides detailed instructions for assembly, operation, maintenance, and troubleshooting to ensure optimal use of your new desk. Please read this manual thoroughly before beginning assembly or operation.

#### Important Safety Information

- Handle with care to avoid injury from sharp edges.
- Always follow proper safety precautions when using electrical components.
- Ensure all connections are secure before plugging into a power source.
- Do not overload the power outlets.
- Keep liquids away from electrical components.

### 2. Package Contents

---

Please verify that all components listed below are included in your package. If any parts are missing or damaged, please contact customer support.

- L-Shaped Desk Frame Components
- Desk Panels (Main, Side, Monitor Stand)
- 4 Tiers Open Shelves
- Built-in Power Outlets (3 AC, 2 USB Charging Ports)
- LED Light Strip
- Extra Storage Bag
- Headphone Hook
- Assembly Hardware & Tools
- Instruction Manual

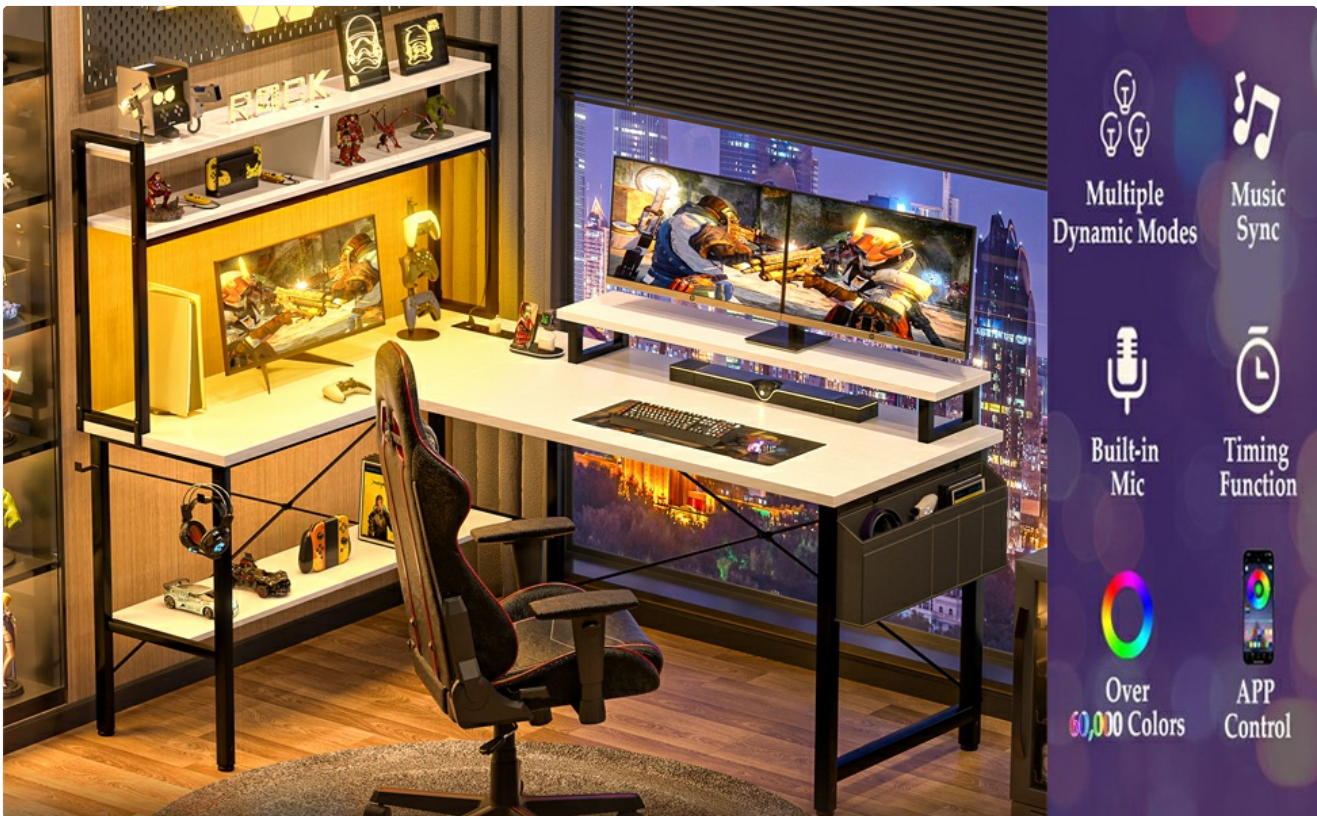


Figure 2.1: Overview of the Aheplus L-Shaped Gaming Desk and its features.

### 3. Assembly Instructions

---

All necessary hardware and tools are included. Parts are clearly labeled for straightforward assembly. It is recommended to assemble the desk in the room where it will be used.

1. **Unpack and Identify Parts:** Carefully unpack all components and lay them out. Refer to the parts list to ensure everything is present.
2. **Assemble the Frame:** Connect the metal frame components according to the diagrams. Ensure all screws are finger-tightened initially.
3. **Attach Desk Panels:** Secure the main and side desk panels to the assembled frame.
4. **Install Shelving:** Attach the 4 tiers of open shelves. Note that the L-shaped design is reversible, allowing the top hutch to be fixed on either the left or right side to suit your space.
5. **Mount Monitor Stand:** Place the moveable monitor stand on the desk surface. This stand is designed to elevate your line of sight for improved posture.
6. **Install Accessories:** Attach the extra storage bag and headphone hook to the designated areas.
7. **Secure All Fasteners:** Once all components are in place, fully tighten all screws and fasteners. Do not overtighten.



## 4 Use Type Design

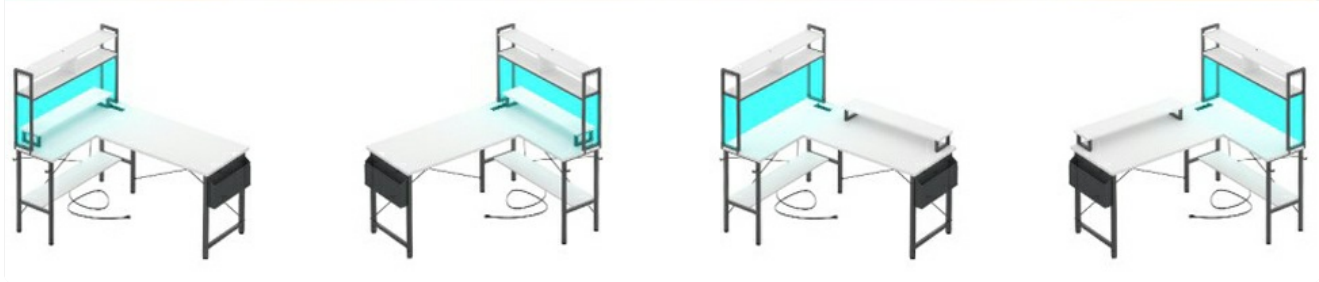


Figure 3.1: The reversible design allows for four different placement configurations to maximize space.

### 4. Setup and Placement

Choose a suitable location for your desk, considering the reversible L-shape to best fit your room layout. Ensure the surface is level to prevent wobbling. Adjustable leg pads are provided to enhance stability on uneven floors.

#### Connecting Power

The desk is equipped with a built-in power strip. Plug the desk's power cord into a standard wall outlet. You can then use the 3 AC outlets and 2 USB charging ports to power your devices.



Figure 4.1: The integrated power outlets provide convenient access for charging multiple devices.

## 5. Operating Instructions

---

### LED Lights Operation

The integrated LED strip offers over 60,000 colors and multiple flashing modes. Control the lights via a dedicated mobile application. Features include timing mode and music sync mode for an immersive experience.

### Power Outlets Usage

Utilize the 3 standard AC power outlets (120V/12A) and 2 USB charging ports (5V/2A) to power and charge your computer, smartphone, gaming gear, and other electronic devices simultaneously. The power cord is 6.5 feet long.

### Monitor Stand and Storage

The moveable monitor stand helps elevate your screen to maintain proper sitting posture, protecting your cervical and spinal health. The desk also features 4 tiers of open shelves, an extra storage bag, and a headphone hook for organized storage of your daily items.

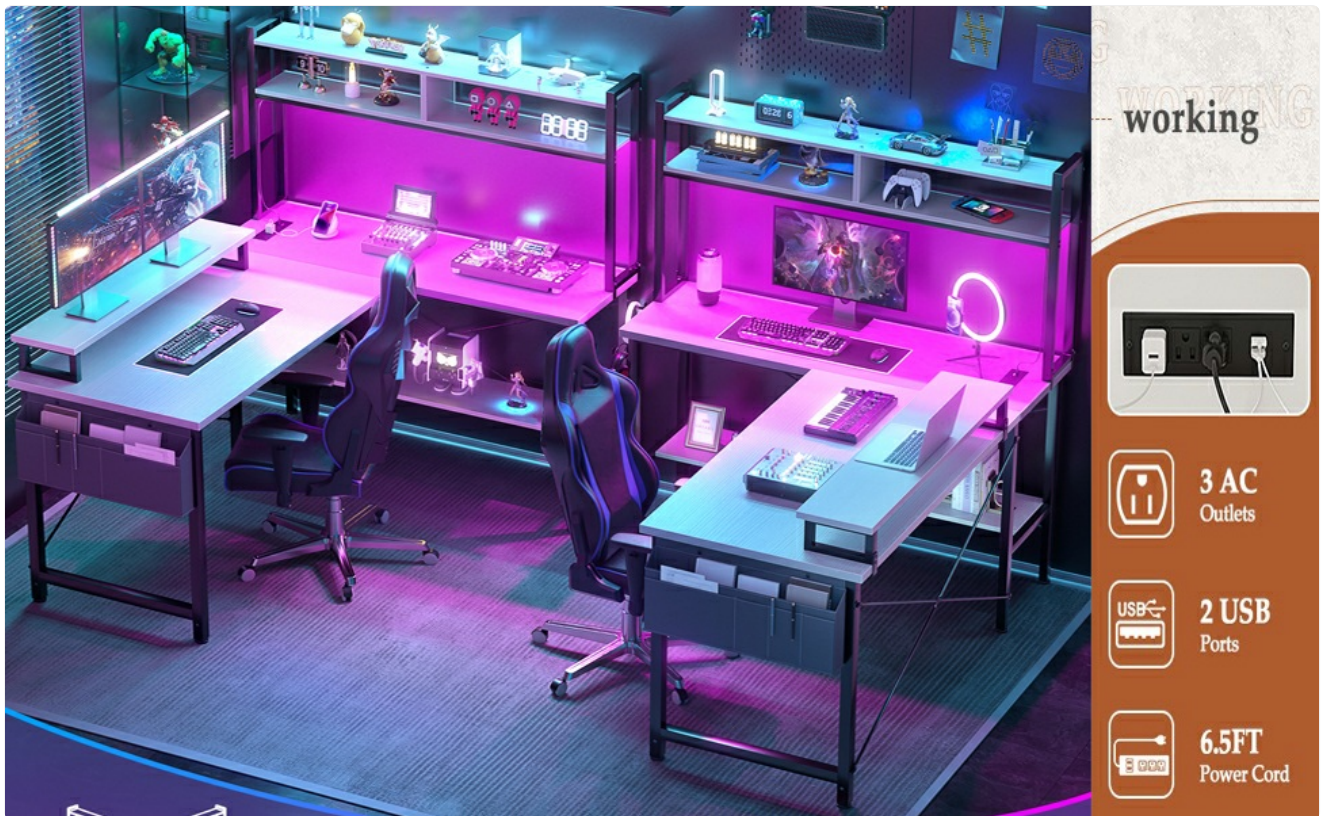


Figure 5.1: The monitor stand promotes ergonomic posture, while shelves and storage bag offer ample organization.

## 6. Maintenance

---

To ensure the longevity and appearance of your Aheaplus Gaming Desk, follow these simple maintenance guidelines:

- **Cleaning:** Wipe the desk surfaces with a dry cloth. Avoid using harsh chemicals or abrasive cleaners that could damage the finish.
- **Spills:** Immediately wipe up any spills to prevent water damage to the engineered wood.
- **Stability Check:** Periodically check all screws and fasteners to ensure they remain tight. Retighten if necessary.
- **Electrical Components:** Keep the power outlets and LED strip free from dust and debris. Do not attempt to disassemble electrical components.

## 7. Troubleshooting

---

If you encounter any issues with your Aheaplus Gaming Desk, please refer to the following common problems and solutions:

| Problem                                | Possible Cause  | Solution  |
|--|---|---|
| Desk wobbles or is unstable.           | Uneven floor; loose fasteners.                              | Adjust the leg pads to level the desk. Check and tighten all assembly screws. Ensure the X cross bar is properly installed.   |
| LED lights are not working.            | Power not connected; loose connection; app issue.           | Ensure the desk's power cord is securely plugged into a working outlet. Check the connection of the LED strip to the power source. Verify the mobile app is correctly paired and updated. |
| Power outlets are not providing power. | Desk not plugged in; circuit breaker tripped; device issue. | Confirm the desk's main power cord is plugged into a live outlet. Check your home's circuit breaker. Test the device you are trying to power with another outlet.                         |
| Monitor stand slides easily.           | Not designed to be fixed.                                   | The monitor stand is moveable by design. For increased stability, you may place a non-slip mat underneath it.   |

## 8. Specifications

| Feature            | Detail   |
|--------------------|--|
| Brand              | Aheaplus   |
| Model              | 49-Inch L-Shaped Gaming Desk                             |
| Product Dimensions | 18.9"D x 48.82"W x 59.13"H                               |
| Color              | White  |
| Style              | Modern   |
| Base Material      | Metal  |
| Top Material Type  | Engineered Wood  |
| Special Features   | Built-In USB Outlet, LED Lights, Reversible, Storage Bag |
| Power Outlets      | 3 AC Outlets (120V/12A), 2 USB Charging Ports (5V/2A)    |
| Power Cord Length  | 6.5 FT   |
| Number of Shelves  | 4  |
| Assembly Required  | Yes (Tools Included)                                     |
| Care Instructions  | Wipe with Dry Cloth                                      |

## 9. Warranty and Support

Aheaplus provides a **Lifetime Warranty** for this product, ensuring long-term satisfaction and support.

For any questions, assistance with assembly, troubleshooting, or warranty claims, please contact our experienced customer service team. We are committed to responding within 24 hours.

**Customer Support:** Please refer to your purchase documentation or the Aheaplus official website for contact details.

