

Bloody AT87-Renegade

Bloody x Savage Impact AT87 Alpha Optical Switch Performance Keyboard User Manual

Model: AT87-Renegade | Brand: Bloody

INTRODUCTION

This manual provides comprehensive instructions for the setup, operation, maintenance, and troubleshooting of your Bloody x Savage Impact AT87 Alpha Optical Switch Performance Keyboard. Designed for optimal gaming performance, this keyboard features adjustable actuation points, durable PBT keycaps, and quiet typing.

SETUP

Connecting Your Keyboard

The AT87-Renegade keyboard connects to your computer via a standard USB-A cable. Simply plug the USB-A connector into an available USB port on your PC. The keyboard is plug-and-play, requiring no additional drivers for basic functionality.

Cable Management and Height Adjustment

The keyboard features a 3-direction cable management system, allowing you to route the cable neatly to the left, right, or center from the keyboard's central connector. Additionally, adjustable dual-height feet are provided for customizing the keyboard's elevation to your preferred typing angle.

STEAL QUIET TYPING

Immerse yourself in silent keystrokes,
maximizing your gaming experience

LT Alpha Optical Switch
Precision-tuned Actuation
Points

Silicon Filling
reduce typing resonance

Silicon Pads
Absorb Noise From Interior Collision

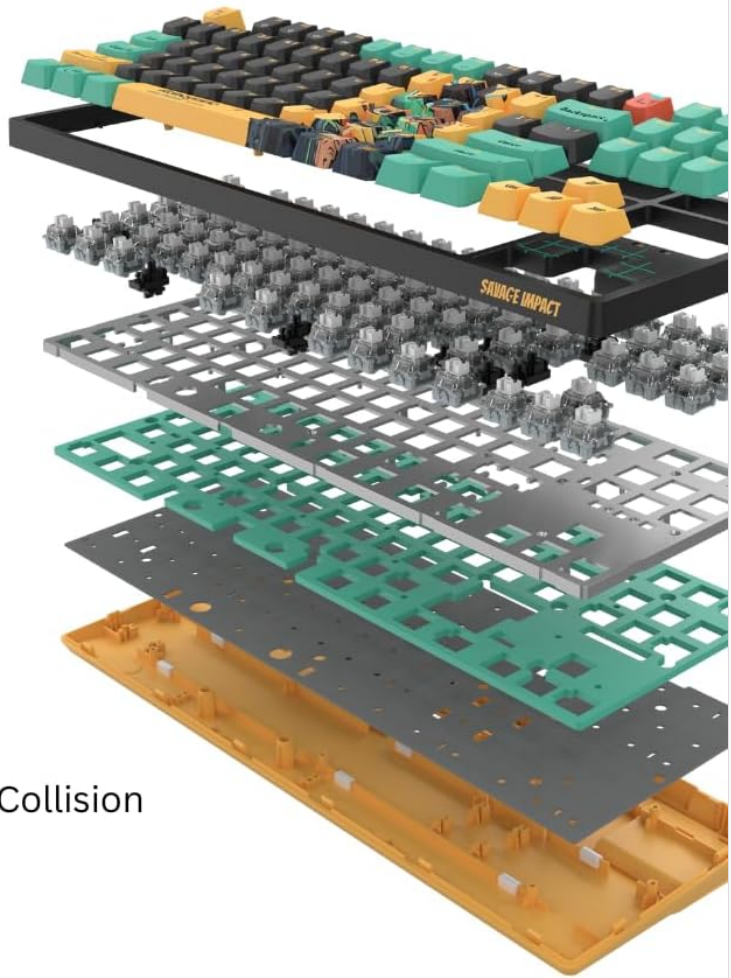


Image: The underside of the keyboard illustrating the 3-direction cable management channels and the two adjustable height settings for the feet.

OPERATING INSTRUCTIONS

Alpha Optical Switches and Adjustable Actuation Point

The AT87-Renegade utilizes Alpha Optical Switches, offering precision-tuned actuation points and forces for enhanced speed and tactile feedback. A key feature is the adjustable actuation point, which can be customized from 1.0mm to 2.6mm. This allows users to tailor the responsiveness of each key to their specific gaming style or typing preference.

ALPHA OPTICAL SWITCH α

Precision-tuned actuation points and forces redefine gaming with unmatched speed and tactile feedback.



Switch Type: Linear
Durability: 100 Million Keystrokes
Initial Force: 48 ± 3 cN Min
Total Travel Distance: 3.8 ± 0.2 mm
Actuation Point Customization Range: 1.0 ~ 2.6 mm



Linear High
Rebound



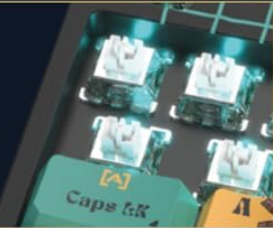
Actuation
Force

87-KEY STYLE KEYBOARD

TKL Compact Design

SWITCH LIFETIME

100 Million Keystrokes



20%
SPACE
SAVING

Image: Detailed view of the Alpha Optical Switch, highlighting its linear switch type, 100 million keystroke durability, 48g initial force, 3.8mm total travel distance, and 1.0-2.6mm actuation point customization range. Also shows the compact 87-key layout.

Customizable Profiles

The keyboard supports 4 customizable variable speed profiles, allowing you to quickly switch between different actuation point settings. This feature is particularly useful for adapting to various game genres or tasks that require different levels of key responsiveness.



ALPHA PROFILE

4 Customizable Variable Speed Profiles

Unleash your gaming potential with the Alpha Optical Switch Keyboard, featuring our patented Alpha Variable Speed Optical Switch Technology. Customize actuation points from 1.0mm to 2.6mm, delivering precision tailored to your gaming style.

 <p>Profile 1 Customization</p>	 <p>Profile 2 Customization</p>	 <p>Profile 3 Customization</p>	 <p>Alpha Gamer Precision Customization</p>
<p>Actuation Point: 9 Types 1.0mm ~ 2.6mm</p>			<p>Fully Customizable Variable Speed for Every Key</p>
<p>9 Types Actuation Point: 1.0mm, 1.2mm, 1.4mm, 1.6mm, 1.8mm, 2.0mm, 2.2mm, 2.4mm, 2.6mm</p>			

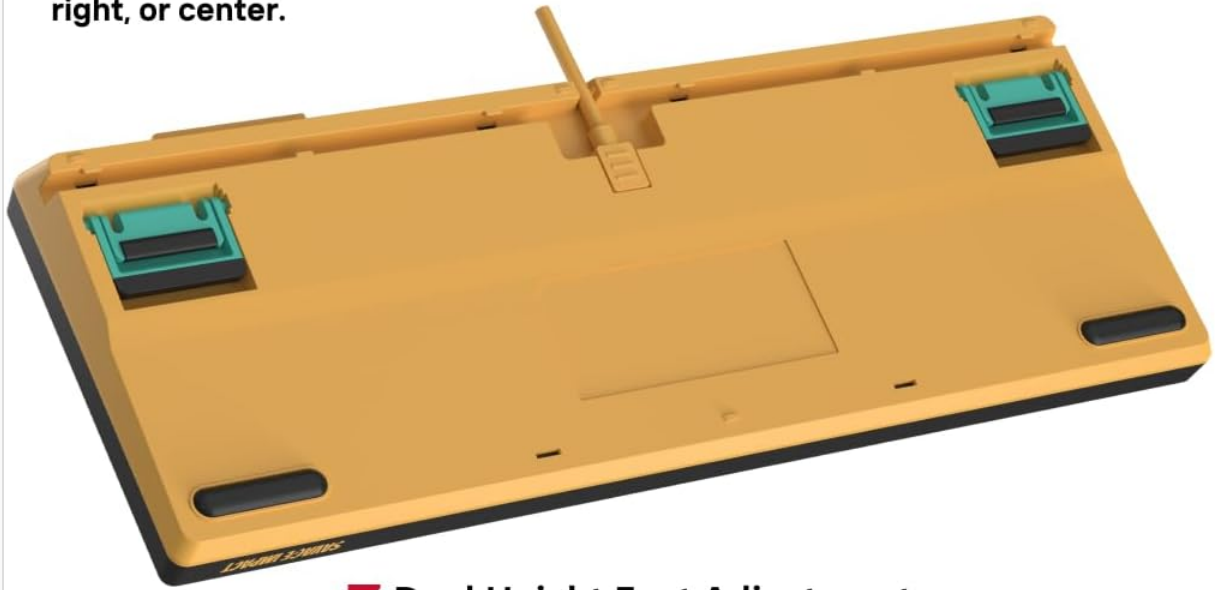
Image: Visual representation of the four customizable variable speed profiles (Profile 1, Profile 2, Profile 3, and Alpha Gamer), demonstrating how actuation points can be tailored from 1.0mm to 2.6mm.

Stealth Quiet Typing

The AT87-Renegade is engineered for silent keystrokes, enhancing your gaming and typing experience without disruptive noise. This is achieved through precision-tuned actuation points, silicon filling to reduce typing resonance, and silicon pads to absorb noise from interior collision.

3-Direction Cable Management

Cable management system for cleanly routing the cable from the keyboard's central connector, allowing you to direct it to the left, right, or center.



Dual Height Feet Adjustment

Adjustable dual-height feet for customizable keyboard elevation.



Image: An exploded diagram showing the internal structure of the keyboard, highlighting the LT Alpha Optical Switches, Silicon Filling, and Silicon Pads, all contributing to the stealth quiet typing feature.

Gaming PBT Keycaps

The keyboard features durable PBT keycaps, known for their resistance to wear and shine, ensuring longevity and a consistent feel. These keycaps are designed for quick bounce back, which is beneficial for rapid keystrokes during gaming.

FEATURES



Alpha Optical
Switch



4 Customizable
Profiles



Stealth Quiet
Typing



4MB Onboard
Memory



100%
Anti-Ghosting



7 RGB Backlit
Effects



Gaming PBT
Keycaps

BALANCE SATELLITE SHAFT

Stable and Durable



Renegade
AKA OUTLAW

PRODUCT SIZE

GAMING PBT KEYCAPS



Weight: 911g (w/o cable)
981g (w/ cable)

Image: A top-down view of the Bloody x Savage Impact AT87 keyboard, showcasing the PBT keycaps with their unique "Renegade" design and overall layout.

RGB Backlit Effects

Customize your gaming ambiance with 7 adjustable RGB backlit effects. Refer to the keyboard's quick start guide or manufacturer's software (if applicable) for instructions on cycling through and customizing these lighting modes.

MAINTENANCE

Cleaning Your Keyboard

To maintain optimal performance and appearance, regularly clean your keyboard. Use a soft, dry cloth to wipe down the keycaps and chassis. For deeper cleaning, you may use a can of compressed air to remove dust and debris from between the keys. Avoid using harsh chemicals or abrasive materials.

Dust Protection

When not in use, it is recommended to cover the keyboard with a dust cover to prevent dust accumulation, which can affect key performance and longevity.

TROUBLESHOOTING

Keyboard Not Responding

- Ensure the USB cable is securely connected to both the keyboard and the computer.
- Try plugging the keyboard into a different USB port on your computer.
- Restart your computer.
- If possible, test the keyboard on another computer to determine if the issue is with the keyboard or your system.

Lighting Issues

- Check if the RGB lighting is enabled via the keyboard's function keys or software.
- Ensure the keyboard's firmware is up to date (check the manufacturer's website).

Key Input Problems

- Clean any debris from under the affected keycap.
- If a specific key is not registering, it might indicate a hardware issue.

For persistent issues not resolved by the above steps, please contact Bloody customer support.

SPECIFICATIONS

Feature	Detail
Model Name	AT87 Renegade
Style	87 Keys (TKL Compact Design)
Switch Type	Alpha Optical Switch (Linear)
Actuation Point Customization	1.0mm to 2.6mm
Keycap Material	Gaming PBT Keycaps
Backlighting	RGB (7 adjustable effects)
Connectivity	USB-A
Compatible Devices	PC
Item Weight	3.3 pounds
Package Dimensions	16 x 7.5 x 2.5 inches
Manufacturer	BLOODY

WARRANTY AND SUPPORT

Product Warranty

For information regarding the product warranty, please refer to the warranty card included with your purchase or visit the official Bloody website. Warranty terms and conditions may vary by region.

Extended Protection Plans

Extended protection plans may be available for purchase to provide additional coverage beyond the standard manufacturer's warranty. Options may include 3-Year Protection Plan, 4-Year Protection Plan, and Complete Protect plans.



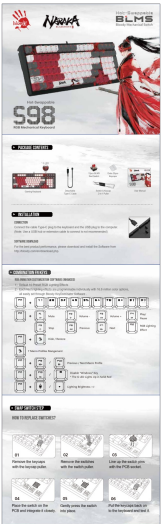
Customer Support

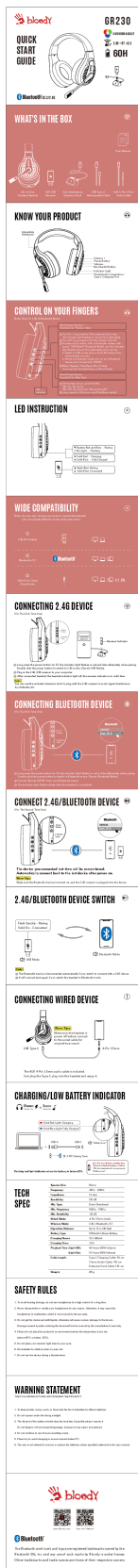
For technical assistance, troubleshooting, or warranty claims, please contact Bloody customer support. You can typically find contact information on the manufacturer's official website or through the retailer where the product was purchased.

Visit the [Bloody Store on Amazon](#) for more product information and support resources.

© 2024 Bloody. All rights reserved.

Related Documents - AT87-Renegade

	<p>Bloody S87 Naraka Mechanical Keyboard Hot-Swappable, Gaming, Red Switches</p> <p>Explore the Bloody S87 Naraka mechanical gaming keyboard, featuring hot-swappable BLMS Red Plus switches, customizable DIY keycaps, and a detachable Type-C cable. This guide covers package contents, installation, and essential FN key combinations for an enhanced gaming experience.</p>
	<p>BLOODY V-Series Gaming Mice: V7M, V7MA, V8M, V8MA Datasheet</p> <p>Detailed specifications and features for the BLOODY V-Series gaming mice, including models V7M, V7MA, V8M, and V8MA. Discover optical switches, customizable RGB lighting, high DPI, and advanced gaming performance.</p>
	<p>Bloody S98 Naraka RGB Mechanical Keyboard - User Guide and Features</p> <p>Comprehensive guide to the Bloody S98 Naraka RGB Mechanical Keyboard, detailing package contents, installation, FN key functions for RGB customization and media control, and a step-by-step guide for swapping switches.</p>



[Bloody GR230 Wireless Headset Quick Start Guide](#)

Comprehensive guide to setting up and using the Bloody GR230 wireless headset with Bluetooth 5.3 and 2.4G connectivity, including features, controls, compatibility, and technical specifications.

	<p>Bloody S98 Hot-Swappable Mechanical Keyboard Quick Guide</p> <p>A quick guide to the Bloody S98 hot-swappable mechanical keyboard, covering package contents, installation, FN key combinations, and switch replacement steps.</p>
	<p>Bloody M70 True Wireless Gaming Earphones Quick Start Guide</p> <p>A quick start guide for the Bloody M70 True Wireless Gaming Earphones, covering what's in the box, how to wear, first-time use, power on/connect, reconnect/disconnect, charging, controls, LED indicators, technical specifications, cleaning and maintenance, safety rules, and warning statements.</p>