

[Manuals.plus](#) /

› [Kitstorack](#) /

› Kitstorack Clear Plastic Under Bed Storage Container Manual - Model 001

Kitstorack 001

Kitstorack Clear Plastic Under Bed Storage Container

Model: 001

PRODUCT OVERVIEW

The Kitstorack Clear Plastic Under Bed Storage Container is designed for efficient organization and space-saving storage. It features a durable polypropylene construction, pre-installed wheels for easy mobility, and secure buckle latches to protect contents from dust and moisture. Its transparent design allows for quick identification of stored items.



Center-Hinged Dual Lids Open from both sides for easy access

Image: The Kitstorack Clear Plastic Under Bed Storage Container, showcasing its transparent design and overall structure.

SETUP INSTRUCTIONS

Follow these steps to assemble your storage container:

1. **Unfold the Storage Bin:** Carefully unfold the main body of the storage bin from its collapsed state.
2. **Unfold Four Panels:** Extend the four side panels upwards until they lock into place, forming the container's walls.
3. **Press the Buckles:** Securely press the buckles on all four sides to ensure the panels are firmly attached to the base.
4. **Attach Lids and Latch:** Place the center-hinged lids onto the top of the container and engage the buckle latches to secure them.



Image: A visual guide demonstrating the four-step assembly process for the storage container, from unfolding to securing the lids.

The container measures approximately 25.2 inches (64 cm) in length, 15.8 inches (40 cm) in width, and 6.1 inches (15.4 cm) in height when unfolded. When folded, it measures 16.5 inches (41.9 cm) by 15.7 inches (39.8 cm) by 5.5 inches (13.9 cm) for space-saving storage.

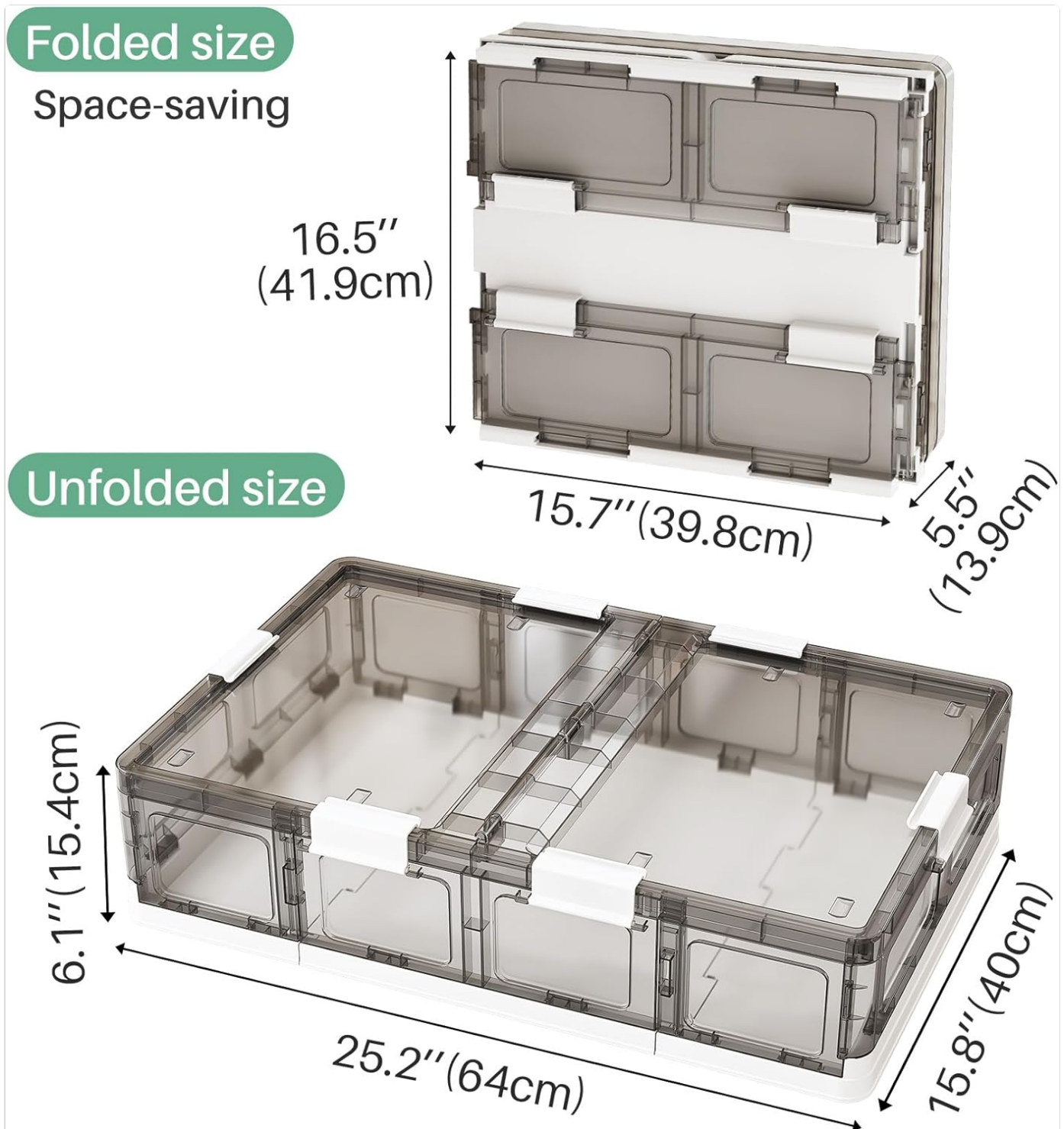


Image: Diagram showing the folded and unfolded dimensions of the storage container, highlighting its compact design when not in use.

Accessing Contents

The container features center-hinged dual lids, allowing you to open either side independently for easy access to your items without needing to unlatch the entire lid.



Image: A view of the container with its center-hinged dual lids partially open, demonstrating easy access to contents from either side.

Mobility and Placement

Equipped with 8 pre-installed wheels, the container can be effortlessly pushed and pulled, making it ideal for under-bed or under-sofa storage. Ensure a minimum clearance of 6.2 inches under your bed or furniture for smooth operation.

Smooth Mobility with 8 Wheels

Effortlessly push and pull with ease

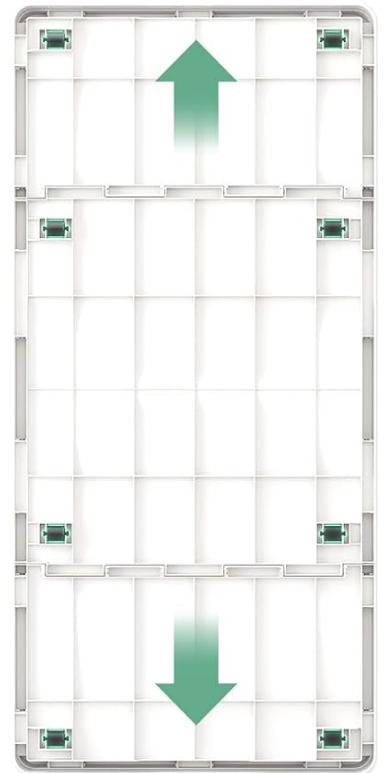
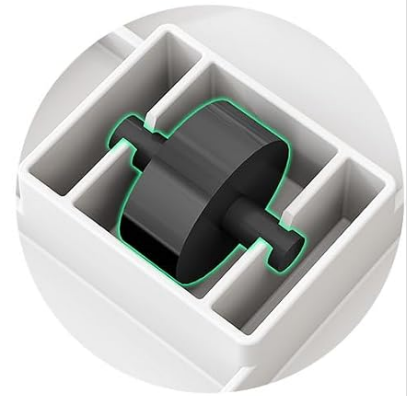
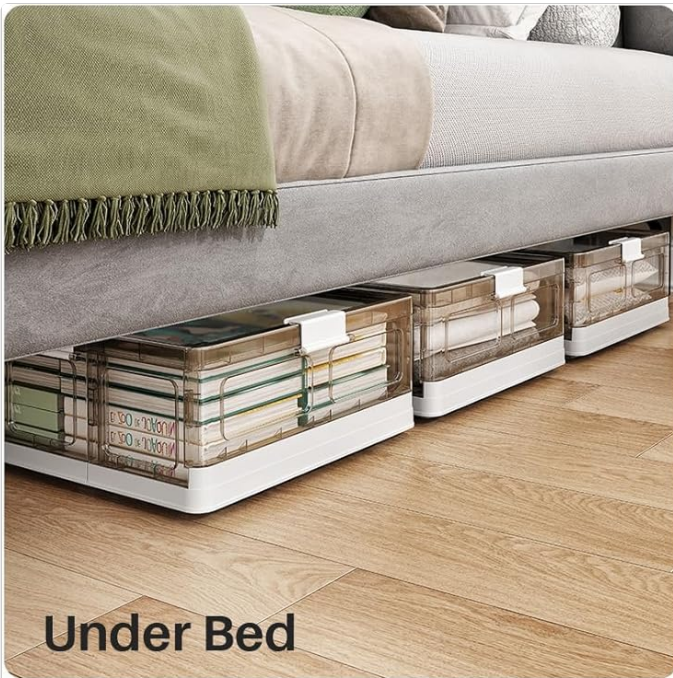


Image: Close-up view of the container's base, highlighting the 8 pre-installed wheels that provide smooth mobility.



Under Bed



Under Sofa



Closet



Bedside

Image: Four panels illustrating various placement options for the storage container: under a bed, under a sofa, inside a closet, and next to a bedside table.

Stacking

The lid design allows for secure stacking of multiple bins, maximizing vertical storage space in closets or other areas.

Your browser does not support the video tag.

Video: Official Kitstorack video demonstrating the clear plastic under bed storage container with wheels, highlighting its features and ease of use.

MAINTENANCE

To maintain the clarity and cleanliness of your Kitstorack storage container, wipe it with a damp cloth as needed. The smooth polypropylene surface is easy to clean, ensuring it remains dust-free and presentable.

Your browser does not support the video tag.

Video: Official Kitstorack video demonstrating the spacious and sturdy design of the underbed bin, including easy slide access and general handling.

TROUBLESHOOTING

- **Lids not sealing tightly:** Ensure all 6 buckle latches are fully engaged. Check for any obstructions around the rim of the container or lid that might prevent a proper seal.
- **Difficulty rolling:** Verify that the wheels are free from debris and can rotate smoothly. Ensure the container is not overloaded beyond its maximum weight capacity of 100 pounds.
- **Container appears warped or bent:** The container is made from robust PP material designed to resist impact and pressure. If warping occurs, check if the container has been subjected to excessive weight beyond 100 lbs or extreme temperatures.
- **Dust or moisture inside:** While the container is designed to be dust-proof and water-resistant with its tight-sealing lids, it is not fully waterproof. Ensure the latches are secured and avoid placing it in areas prone to significant water exposure.

SPECIFICATIONS

Feature	Detail
Brand	Kitstorack
Model Number	001
Color	Clear
Material	Polypropylene (Thicker PP material for enhanced durability)
Item Dimensions (L x W x H)	25.2"L x 15.8"W x 6.1"H (64cm x 40cm x 15.4cm)
Capacity	37.8 Quarts / 11 Gallons
Item Weight	2.18 Kilograms
Maximum Weight Recommendation	100 Pounds
Special Features	Foldable, Stackable, 8 Pre-installed Wheels, Snap-on Lid, Dust-Proof, Water Resistant
Closure Type	6 Buckle Latches
Recommended Uses	Toy storage, Books, Accessories, Clothes, Shoe storage

WARRANTY AND SUPPORT

For warranty information or product support, please refer to the original purchase documentation or contact Kitstorack customer service directly. Contact details can typically be found on the product packaging or the official Kitstorack website.

