

Manuals+

[Q & A](#) | [Deep Search](#) | [Upload](#)

manuals.plus /

› [KEMEI](#) /

› [KEMEI Shortcut Self-Haircut Kit User Manual](#)

KEMEI KM-3522AMZ

KEMEI Shortcut Self-Haircut Kit User Manual

Model: KM-3522AMZ

Brand: KEMEI

1. INTRODUCTION

This user manual provides comprehensive instructions for the safe and effective operation, maintenance, and troubleshooting of your KEMEI Shortcut Self-Haircut Kit. Please read this manual thoroughly before first use and retain it for future reference.



Figure 1: KEMEI Shortcut Self-Haircut Kit, a compact and ergonomic hair clipper designed for easy self-grooming.

2. SAFETY INFORMATION

To ensure safe operation and prevent injury or damage, please adhere to the following safety guidelines:

- **Sharp Blades:** The clipper contains sharp blades. Handle with extreme care to avoid cuts or injuries. Keep fingers and other body parts away from the blades during operation and cleaning.
- **Cleaning:** Always ensure the device is turned off and unplugged before cleaning. Do not immerse the entire unit in water. Refer to the maintenance section for proper cleaning procedures.
- **Battery Safety:** This device contains a Lithium Ion battery. Do not expose to extreme temperatures, puncture, or disassemble the battery. Dispose of batteries safely according to local regulations.
- **Children:** Keep the device out of reach of children. This appliance is not intended for use by persons with reduced physical, sensory or mental capabilities, or lack of experience and knowledge, unless they have been given supervision or instruction concerning use of the appliance by a person responsible for their safety.
- **Damage:** Do not use the clipper if the blade is damaged or if the unit shows any signs of malfunction. Contact customer support for assistance.
- **Power Source:** Use only the provided USB charging cable. Ensure the charging voltage is compatible with the device's requirements.

3. PACKAGE CONTENTS

Verify that all items are present in your package:

- 1x Hair Clipper (KEMEI Shortcut Self-Haircut Kit)
- 9x Guide Combs (1.5/2.0/2.5/3.0/4.5/6.0/9.0/12/15 mm)
- 1x Lubricating Oil
- 1x Cleaning Brush
- 1x User Manual (this document)
- 1x USB Charging Cable



Figure 2: All components included in the KEMEI Shortcut Self-Haircut Kit package.

4. PRODUCT FEATURES

The KEMEI Shortcut Self-Haircut Kit is designed for convenience and efficiency:

- **Compact & Ergonomic Design:** Short body, palm-sized for easy reach to the back of the head and neck. Lightweight at 161g for comfortable use.
- **Hypoallergenic Widening Blade:** A 7 cm wide blade designed for efficient cutting without snagging hair.
- **Removable & Washable Blade:** Easy to detach and clean under running water.
- **Cordless Operation:** Provides up to 60 minutes of runtime after a 2.5-hour charge. USB charging for versatility.
- **9 Limit Combs:** A variety of lengths (1.5/2.0/2.5/3.0/4.5/6.0/9.0/12/15 mm) for different hairstyles and trimming needs.
- **IPX4 Waterproof Rating:** Resistant to splashing water from any direction, allowing for easy rinsing of the blade.
- **Children's Lock Function:** Press and hold the power button for three seconds to lock/unlock the device, preventing accidental activation.



Figure 3: The clipper's lightweight and portable design, weighing only 161g, makes it ideal for travel.



Figure 4: The IPX4 waterproof rating allows for easy cleaning of

the blade under running water.



Figure 5: High-performance DC motor ensures consistent and powerful cutting.



Figure 6: The Children's Lock feature prevents accidental activation; press and hold for three seconds to engage/disengage.

5. SETUP

5.1 Initial Charging

Before first use, fully charge the clipper. A full charge takes approximately 2.5 hours and provides up to 60 minutes of cordless runtime.

1. Connect the USB charging cable to the charging port on the clipper.
2. Plug the other end of the USB cable into a compatible USB power source (e.g., computer, car charger, power bank, or wall adapter).

3. The indicator light will illuminate during charging and change when fully charged (refer to device specific light behavior if available, otherwise general statement).
4. Once fully charged, disconnect the clipper from the power source.



Figure 7: The clipper can be conveniently charged via USB from various power sources.

5.2 Attaching Guide Combs

Select the desired guide comb for your preferred hair length. The kit includes 9 combs ranging from 1.5mm to 15mm.

1. Ensure the clipper is turned off.
2. Align the chosen guide comb with the clipper blade.
3. Gently push the comb onto the blade until it clicks securely into place.
4. To remove, gently pull the comb away from the blade.

Various styles of hairstyles

9PCS LIMIT COMBS

Can cut different hair styles

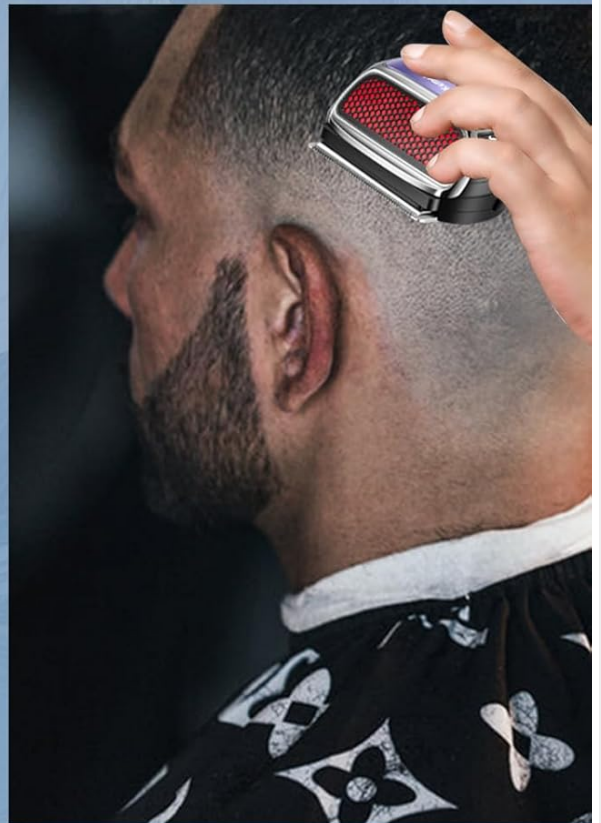


Figure 8: The kit includes 9 guide combs for versatile hair cutting lengths.

6. OPERATING INSTRUCTIONS

6.1 General Hair Cutting

1. Ensure your hair is clean and dry.
2. Attach the desired guide comb firmly to the clipper blade.
3. Press the power button to turn on the clipper.
4. Begin cutting by moving the clipper against the direction of hair growth. Use slow, even strokes.
5. For best results, start with a longer comb length and gradually reduce if a shorter cut is desired.
6. Regularly clear accumulated hair from the comb and blade during use to maintain optimal performance.
7. After use, press the power button to turn off the clipper.

6.2 Specific Haircut Areas

- **Buzz Cut / Overall Trim:** Use a consistent comb length across the entire head. The compact design allows easy access to the back and top of the head.
- **Nape of Neck & Sideburns:** Use shorter combs (e.g., 3mm or 6mm) for precise trimming and clean lines.
- **Back of Head:** Combs of 9mm or 12mm are suitable for this area.
- **Crown of Head:** Longer combs, such as 12mm or 15mm, are recommended for the top of the head.
- **Edging:** For precise edging without a comb, carefully use the blade edge to define hairlines around the ears, neck, and sideburns.

7. MAINTENANCE

7.1 Cleaning the Clipper

Regular cleaning ensures optimal performance and extends the life of your clipper.

1. Ensure the clipper is turned off and disconnected from the charging cable.
2. Remove the guide comb.
3. Carefully detach the blade assembly by pushing it away from the clipper body.
4. Use the provided cleaning brush to remove loose hair from the blade and the clipper body.
5. Rinse the blade assembly under running water. The clipper itself is IPX4 rated, meaning it can withstand splashing water, but avoid submerging the entire unit.
6. Allow the blade assembly to air dry completely before reattaching it to the clipper.

7.2 Lubricating the Blades

To maintain cutting efficiency and prevent blade wear, lubricate the blades after every few uses or after cleaning with water.

1. Apply 1-2 drops of the provided lubricating oil onto the teeth of the blade.
2. Turn on the clipper for a few seconds to allow the oil to distribute evenly.
3. Wipe off any excess oil with a soft cloth.

8. TROUBLESHOOTING

If you encounter issues with your KEMEI Shortcut Self-Haircut Kit, refer to the following table:

Problem	Possible Cause	Solution
Clipper does not turn on.	Battery is depleted. Children's lock is engaged.	Charge the clipper for 2.5 hours. Press and hold the power button for 3 seconds to disengage the lock.
Clipper pulls hair or cuts poorly.	Blades are dull or dirty. Blades are not lubricated. Hair is too thick or wet.	Clean the blades thoroughly. Apply lubricating oil to the blades. Ensure hair is dry and comb through before cutting.
Clipper makes unusual noise.	Blades are not properly aligned or lubricated. Internal malfunction.	Clean and lubricate blades, ensure they are securely reattached. If problem persists, contact customer support.

Problem	Possible Cause	Solution
Battery life is shorter than expected.	Battery not fully charged. Old battery.	Ensure full 2.5-hour charge. Battery degradation is normal over time. Consider replacement if available or contact support.

If the issue persists after attempting these solutions, please contact KEMEI customer support.

9. SPECIFICATIONS

Feature	Detail
Model Number	KM-3522AMZ
Brand	KEMEI
Power Source	Battery Powered (1 Lithium Ion battery included)
Charging Time	Approx. 2.5 hours
Runtime	Approx. 60 minutes
Blade Width	7 cm (hypoallergenic)
Weight (Clipper Only)	161 grams
Weight (Package)	776 Grams (1.71 Pounds)
Dimensions (Package)	10.12 x 6.69 x 2.95 inches
Waterproof Rating	IPX4
Recommended Use	Hair Cut (Head, Beard, Body)

10. WARRANTY AND SUPPORT

KEMEI products are manufactured to high-quality standards. For warranty information, technical support, or service inquiries, please refer to the warranty card included with your product or visit the official KEMEI website. Please have your model number (KM-3522AMZ) and purchase details ready when contacting support.

Legal Disclaimer: Statements regarding dietary supplements have not been evaluated by the FDA and are not intended to diagnose, treat, cure, or prevent any disease or health condition. This product is a personal grooming appliance and not a dietary supplement.

