

SKYBASIC inskam372B

SKYBASIC Digital Microscope User Manual

Model: inskam372B

INTRODUCTION

The SKYBASIC Handheld Digital Microscope is designed to provide an engaging and educational experience for exploring the microscopic world. Featuring a 2-inch IPS color display and up to 1000X magnification, this portable device allows users to observe intricate details of various objects, capture photos, and record videos. It is suitable for children and students, fostering curiosity and scientific discovery.

WHAT'S INCLUDED

Verify that all components are present in the package:

- 1 x SKYBASIC Kids Microscope
- 1 x Portable Lanyard
- 1 x USB Cable (Adapter Not Included)
- 1 x User Manual



Image: Package contents of the SKYBASIC Digital Microscope.

SETUP

1. **Charging the Device:** Before first use, fully charge the microscope using the provided USB cable. Connect the USB cable to the microscope's charging port and to a standard USB power adapter (not included) or a computer USB port. The charging indicator will show the charging status.
2. **Attaching the Lanyard:** For portability and to prevent accidental drops, attach the portable lanyard to the designated loop on the microscope.
3. **Inserting a TF Card (Optional for Video Recording):** The microscope has built-in storage for up to 400 photos. For video recording, a TF (microSD) memory card (not included) must be inserted into the card slot. Ensure the card is inserted correctly.



Image: Visual representation of the microscope and its accessories, including the anti-lost rope (lanyard) and Type-C cable.

OPERATING INSTRUCTIONS

Basic Operation

1. **Power On/Off:** Long press the power button (usually located on the side or front) to turn the device on or off. The 2-inch IPS screen will illuminate.
2. **Focus Adjustment:** Slowly rotate the focus wheel, located on the barrel of the microscope, until the object on the screen appears clear and sharp. This adjusts the magnification and focus.
3. **Adjusting LED Lights:** The microscope features 8 adjustable LED lights. Use the light adjustment buttons (if present) to control the brightness for optimal viewing conditions.

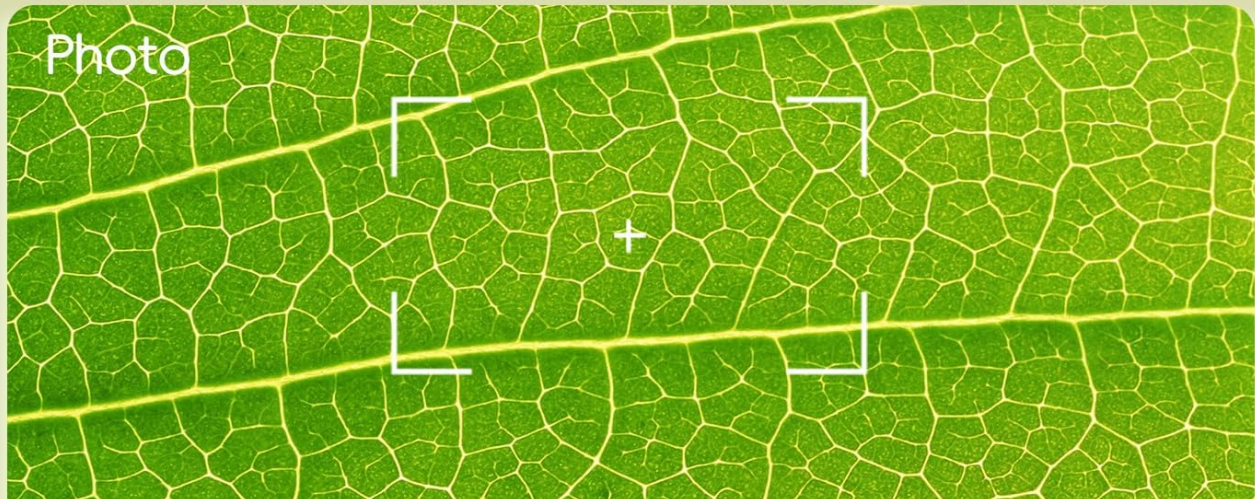


Image: Step-by-step guide for basic microscope operation.

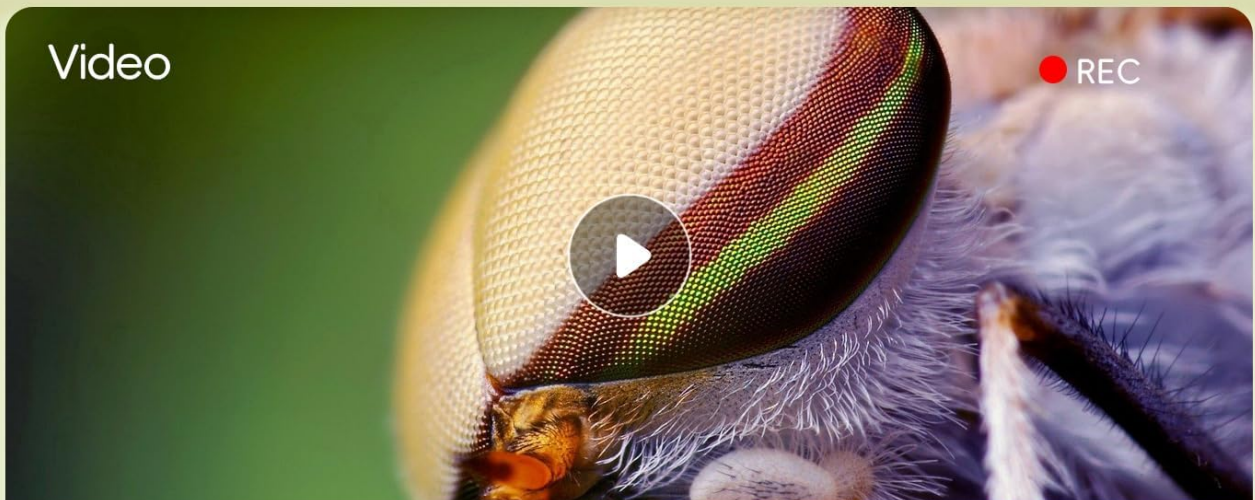
Capturing Photos and Videos

- **Taking Photos:** With the desired object in focus, press the dedicated photo button (often marked with a camera icon) to capture an image. Photos are saved to the internal storage or the inserted TF card.
- **Recording Videos:** To record video, ensure a TF card is inserted. Press the video recording button (often marked with a video camera icon or "REC") to start and stop recording.
- **Viewing Media:** Use the navigation buttons to browse captured photos and videos on the microscope's screen.

One-click Take photos and Videos



🔥 Built-in storage space supports taking up to 400 photos without a TF card



🔥 Need install a TF card (Not included)

Image: Instructions for taking photos and recording videos.

Connecting to a PC

The SKYBASIC Digital Microscope can be connected to a computer for a larger viewing experience and to transfer files.

1. Connect the microscope to your computer using the provided USB cable.
2. The microscope should be recognized as a webcam or storage device.
3. For live viewing, open a webcam application or compatible microscope software on your computer.
4. To access stored photos and videos, navigate to the microscope's drive in "My Computer" or "Finder".

Compatibility: Supports Windows Vista/XP/7/8/10/11 and MacOS X 11.0 or higher.

USB Connect to PC for Large View

Support Windows Vista/XP/7/8/10/11, MacOS X 11.0 or higher



Windows



MacOS



Image: Connecting the microscope to a PC for a larger view.

MAINTENANCE

- **Cleaning:** Use a soft, dry cloth to clean the exterior of the microscope. For the lens and screen, use a microfiber cleaning cloth specifically designed for optics. Do not use abrasive cleaners or solvents.
- **Storage:** Store the microscope in a cool, dry place away from direct sunlight and extreme temperatures. Keep it in its original packaging or a protective case when not in use to prevent dust accumulation and damage.
- **Battery Care:** To prolong battery life, avoid fully discharging the battery frequently. Charge the device regularly, even if not in constant use.

TROUBLESHOOTING

Problem	Possible Cause	Solution
---------	----------------	----------

Problem	Possible Cause	Solution
Device does not turn on.	Low battery; Power button not pressed long enough.	Charge the device fully. Long press the power button for 3-5 seconds.
Image is blurry.	Out of focus; Lens is dirty.	Rotate the focus wheel slowly until the image is clear. Clean the lens with a microfiber cloth.
Cannot record video.	No TF card inserted; TF card is full or corrupted.	Insert a compatible TF card. Check TF card storage or try a different card.
Cannot connect to PC.	Incorrect USB cable; Driver issue; Incompatible OS.	Ensure you are using the correct USB cable. Try a different USB port. Check PC compatibility (Windows Vista/XP/7/8/10/11, MacOS X 11.0+).

SPECIFICATIONS

Feature	Detail
Model Number	inskam372B
Display Screen	2.0 Inch IPS Color Display
Magnification	Up to 1000X
Light Source	8 Adjustable LED Lights
Photo Storage	Built-in storage for approx. 400 photos (no TF card needed)
Video Recording	Requires TF memory card (not included)
PC Compatibility	Windows Vista/XP/7/8/10/11, MacOS X 11.0 or higher
Power Source	Battery Powered (1 Lithium Ion battery included)
Item Weight	4.6 ounces (130 Grams)
Dimensions	6.69 x 4.13 x 3.11 inches (Package)



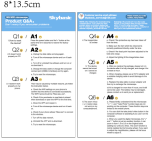

WARRANTY AND SUPPORT

For any product-related inquiries, technical support, or if the product does not meet your expectations, please contact SKYBASIC customer service. Refer to the contact information provided in your product packaging or visit the official SKYBASIC website for support details.

SKYBASIC is committed to providing high-quality products and customer satisfaction.



Related Documents

	<p>SKYBASIC LCD Digital Microscope Operation Guide</p> <p>A comprehensive guide to operating the SKYBASIC LCD Digital Microscope, covering setup, usage, specifications, and troubleshooting.</p>
	<p>Skybasic Digital Microscope Product Q&A and Troubleshooting</p> <p>A comprehensive guide to common issues and solutions for the Skybasic Digital Microscope, covering screen problems, charging, PC connectivity, and image clarity.</p>
	<p>Skybasic 303 WiFi Microscope Product Q&A and Troubleshooting Guide</p> <p>Comprehensive Q&A and troubleshooting guide for the Skybasic 303 WiFi Microscope, covering common issues like device reset, PC and phone connectivity, image clarity, charging, and zoom function. Includes warranty information and customer support details.</p>
	<p>SKYBASIC G40-M HD Industrial Endoscope Camera: User Manual and Specifications</p> <p>Comprehensive guide for the SKYBASIC G40-M HD Industrial Endoscope camera, covering product description, safety, battery, functions, charging, FAQ, accessories, and technical specifications.</p>