

[Manuals.plus](#) /

› [MSR X6](#) /

› MSR X6 Smart Glass Door Lock User Manual (Model HUBLTYB01)

## MSR X6 HUBLTYB01

# MSR X6 Smart Glass Door Lock User Manual

Model: HUBLTYB01

## INTRODUCTION

---

The MSR X6 Smart Glass Door Lock provides advanced security and convenient access for various glass door applications. This 7-in-1 keyless entry system supports multiple unlocking methods, including fingerprint, PIN code, Tuya App, IC card, auto-lock, and mechanical keys. It is designed for easy installation without drilling and offers robust features for managing access and monitoring activity.

## PRODUCT OVERVIEW

---

This section provides a visual overview of the lock's features and components.

# Multiple Ways to Unlock

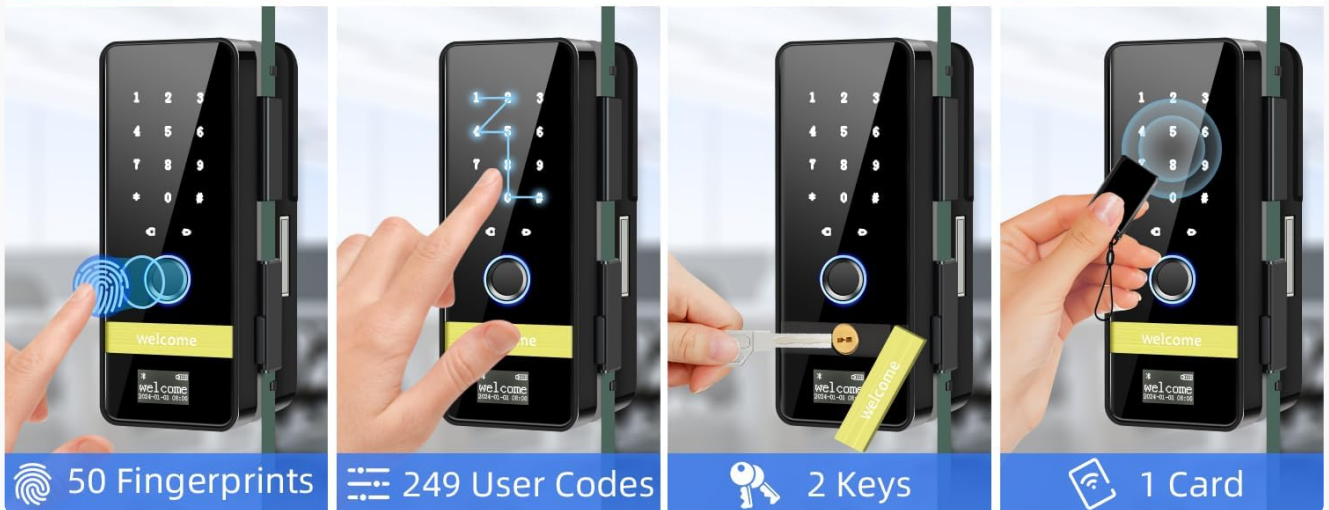
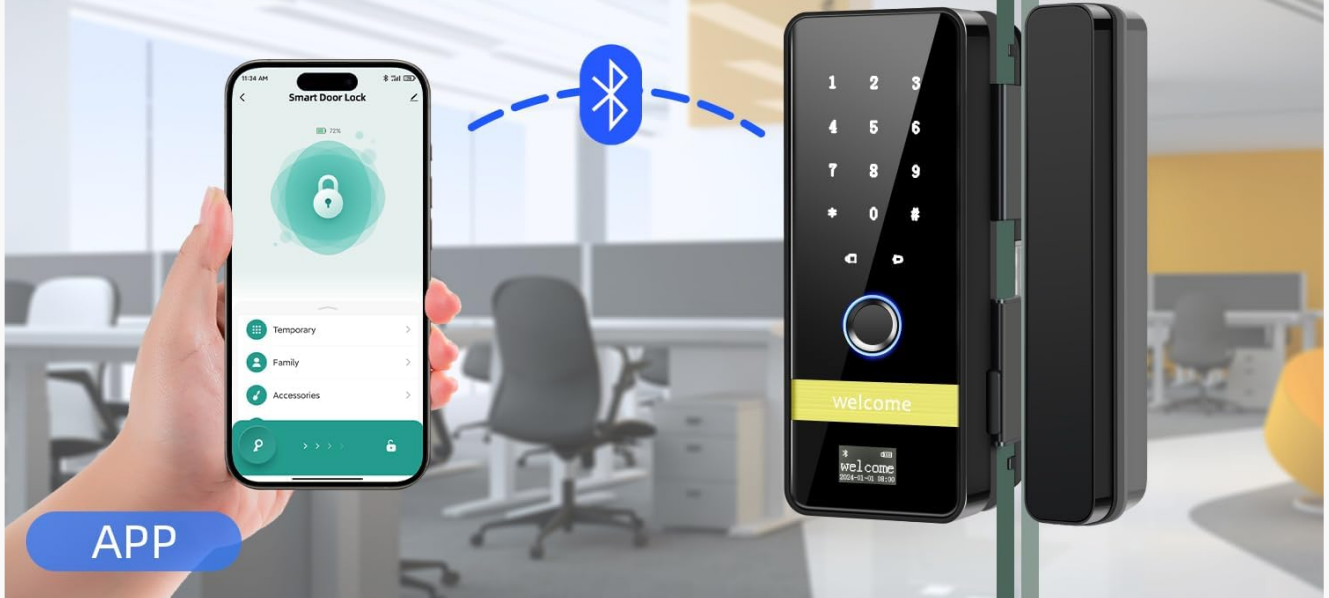


Figure 1: Multiple Ways to Unlock the MSR X6 Smart Glass Door Lock, including app, fingerprint, PIN code, mechanical key, and IC card.

# Your Finger is Your Key

**1s** 1s Instant Unlocking

**50** 50 Fingerprints

**99%** 99% Recognition Rate



Figure 2: The fingerprint sensor allows for instant unlocking with a high recognition rate.

# How to connect the smart glass door lock?

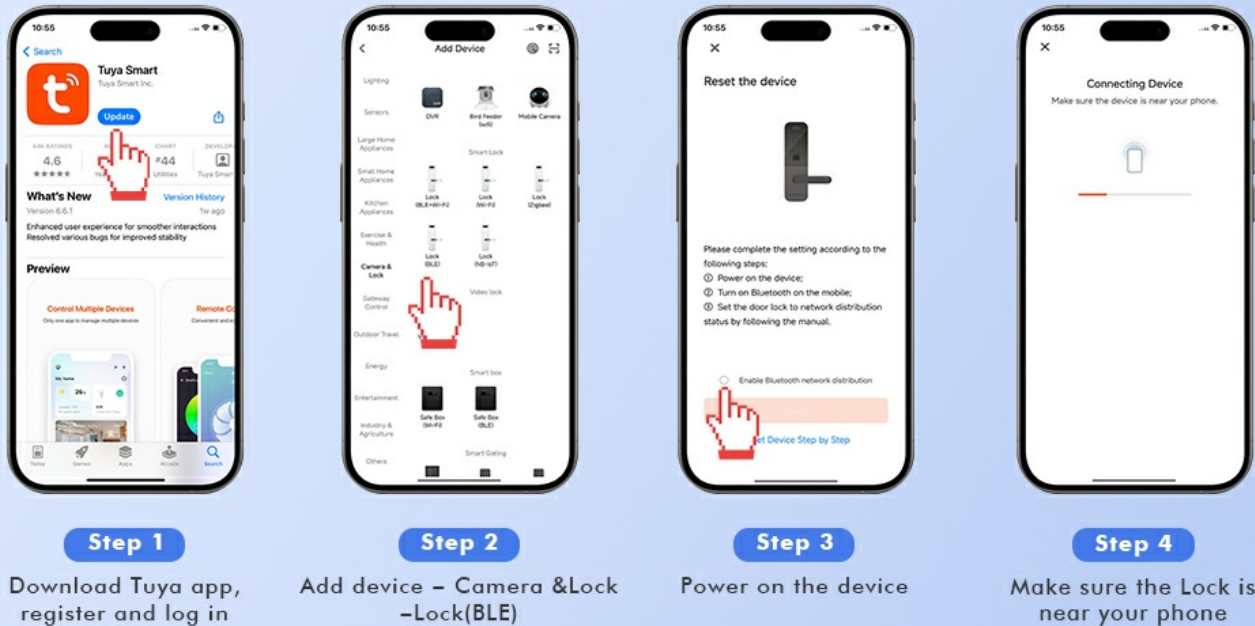


Figure 3: Full control of the lock is available through the Tuya app, including keyless entry, user management, auto-lock, viewing history, temporary passcodes, and setting fingerprints.

## SETUP AND INSTALLATION

### Installation Conditions

- The glass door thickness must be between 10mm and 12mm (2/5"-1/2").
- The gap between two glass doors must be between 4mm and 15mm.
- The top of the glass lock should be 1.2m-1.5m above the ground.

### Friendly Reminder:

- Please clean and dry the installation area before installing the product.

### Installation Steps (No Drilling Required)

1. Clean the glass door surface and draw a straight line at 1.2-1.5 meters from the ground.
2. Tear off one side of the adhesive from the mounting plate and firmly adhere it to the main lock unit.
3. Align the mounting plate with the door edge and stick it onto the glass door.
4. Snap the main lock into the mounting plate.
5. Open the battery cover, screw on the corresponding 3 screws to secure the main lock.
6. Take apart the secondary lock cover.
7. Align and install the secondary lock into its mounting plate.
8. Install 4 securing screws for the secondary lock.
9. Install 4 AAA alkaline batteries (not included) into the main lock.
10. Attach the battery cover.

# Easy To Install without Drilling



Figure 4: Visual guide for the easy, no-drilling installation process.

Your browser does not support the video tag.

Video 1: MSR X6 Smart Glass Door Lock Installation Guide. This video demonstrates the step-by-step process for installing the lock on a glass door.

## Initial Setup and App Connection

1. Download the Tuya Smart app, register, and log in.
2. In the app, add a device by selecting 'Camera & Lock' then 'Lock (BLE)'.
3. Power on the device.
4. Ensure the lock is near your phone and Bluetooth is enabled for connection.

# Grant Access to Those You Trust

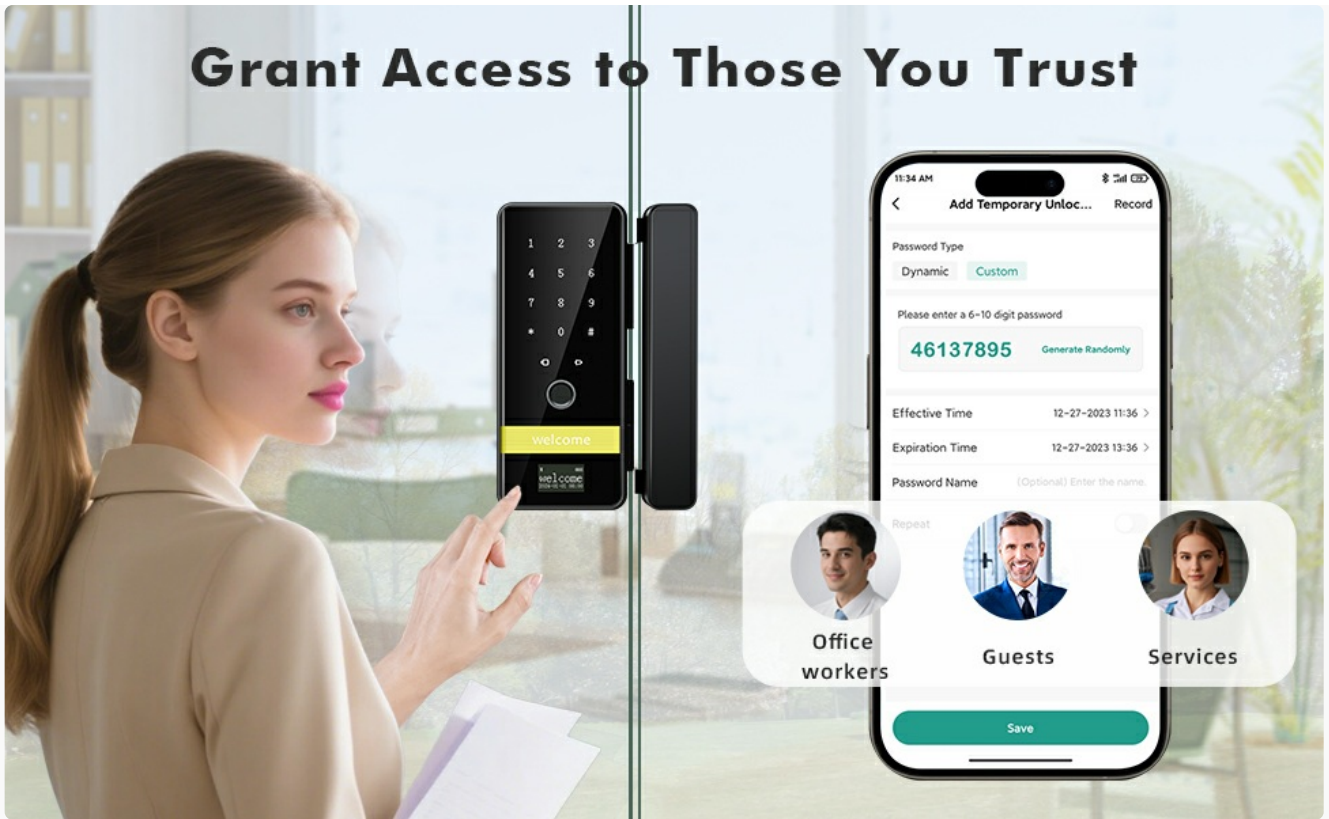


Figure 5: Steps to connect your MSR X6 Smart Glass Door Lock to the Tuya Smart app.

## OPERATING THE LOCK

### Unlocking Methods

The MSR X6 Smart Glass Door Lock offers 7 ways to unlock:

- **Fingerprint:** Use registered fingerprints for quick access. The lock features AI self-learning biometric technology for improved accuracy.
- **PIN Code:** Enter a personalized PIN code on the keypad. The initial passcode is "123456".
- **Tuya App:** Control the lock remotely via the Tuya Smart app on your smartphone.
- **IC Card:** Tap a registered IC card to unlock.
- **Mechanical Keys:** Use the provided mechanical keys as a backup.
- **Auto-Lock:** The lock can be set to automatically lock after a specified period.
- **Temporary Passcodes:** Generate one-time or short-term passwords remotely for guests or service personnel.

# One-Time Pin Code

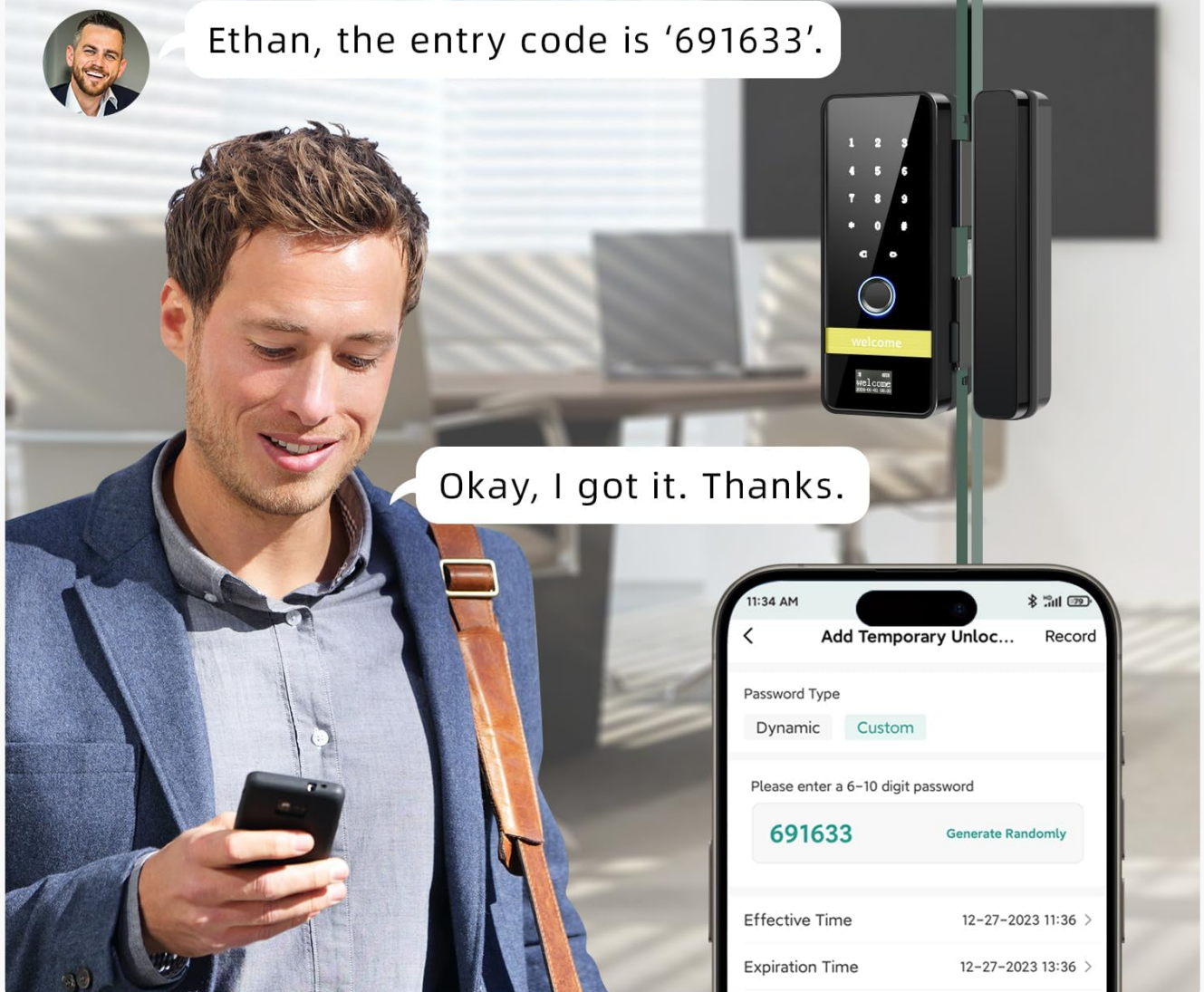


Figure 6: Generating and using a one-time PIN code for temporary access.

## App Control Features

The Tuya Smart app provides comprehensive management of your lock:

- Set up and manage fingerprints and passcodes.
- Create and revoke temporary access codes.
- View unlocking records and access history.
- Configure auto-lock settings.
- Set silent mode for quiet operation.
- Manage users and grant access to trusted individuals.

## Wide Application



Figure 7: Granting access to various users through the mobile application.

### Anti-Peeping Password

To enhance security, the lock supports an anti-peeping password feature. You can enter random digits before or after your actual PIN code to prevent others from guessing your code. For example, if your PIN is 51348920, you can enter 84602 + 51348920 + 12546.

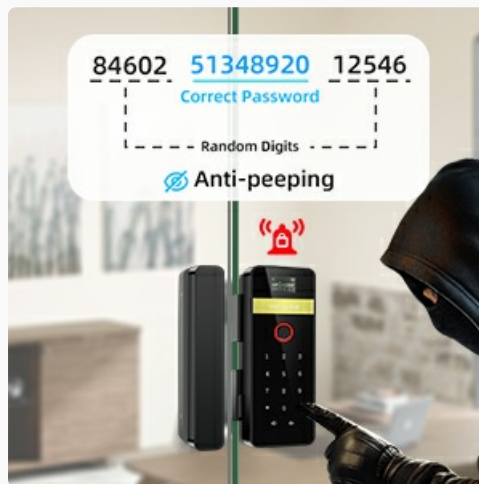


Figure 8: Example of using the anti-peeping password feature.

## MAINTENANCE

### Battery Information

- The lock requires 4 AAA new alkaline batteries (not included).
- The lock provides a low power alert when batteries are running low.
- Expected battery life is approximately 180 days, depending on usage.



Figure 9: Battery requirements and low power alert feature.

## TROUBLESHOOTING

### Factory Reset

To return the lock to its factory settings:

1. Locate the reset button on the back of the lock unit.
2. Press and hold the button for 15 seconds until you hear a "du du du" sound.
3. Release the button. The lock will reset to its initial settings, and the initial passcode will be "123456".

Your browser does not support the video tag.

Video 2: How to Set Smart Glass Door Lock. This video includes instructions on how to add administrator codes and cards, user fingerprints, and how to perform a factory reset.

## SPECIFICATIONS

Feature	Detail
Brand	MSR X6
Model Name	smart glass door lock
Item Model Number	HUBLTYB01
Lock Type	Biometric, Combination Lock, Deadbolt, Keypad
Special Features	Anti-Peeping Password, Auto-Lock, Fingerprint, Fob Unlock, Passcode Unlock
Material	Stainless Steel
Color	Black
Item Dimensions (L x W x H)	4.33 x 2.85 x 7.28 inches
Item Weight	2.77 pounds (1.26 Kilograms)
Connectivity Protocol	Bluetooth
Control Method	App, Remote, Touch

Batteries Required	4 AAA alkaline batteries (not included)
UPC	733810071761

## WARRANTY AND SUPPORT

---

For warranty information and customer support, please refer to the manufacturer's official website or contact their customer service directly. Details may also be available in the product packaging or on the purchase platform.

