

[manuals.plus](#) /

› [Aroepurt](#) /

› [Aroepurt Inoi A14 A14e Phone Case with Tempered Glass and Ring Holder Instruction Manual](#)

Aroepurt Inoi A14 A14e Case JSF-FDL

Aroepurt Inoi A14 A14e Phone Case Instruction Manual

Model: JSF-FDL

1. INTRODUCTION

This manual provides instructions for the Aroepurt protective case designed for the Inoi A14 and Inoi A14e smartphones. The case features a combination of hard PC and soft silicone for enhanced protection, a built-in ring holder, glitter, and a luminous effect. It also includes a tempered glass screen protector for comprehensive device safety.



Image 1.1: Overview of the Aroepurt Inoi A14 A14e phone case, including the main case, tempered glass screen protector, and detachable ring holder.

2. PACKAGE CONTENTS

Verify that all items are present in the package:

- 1x Aroepurt Protective Case for Inoi A14 / A14e
- 1x Tempered Glass Screen Protector
- 1x Adhesive Metal Ring Holder

3. SETUP AND INSTALLATION

3.1 Installing the Phone Case

1. Ensure your Inoi A14 or A14e device is clean and free of dust.
2. Align the phone with the case, starting with the top or bottom edge.
3. Gently press the phone into the case, ensuring all corners and edges are securely fitted. The flexible silicone frame will accommodate the device.



Image 3.1: Illustration of the case's shockproof design, highlighting the four-corner thickening and shock airbags for impact protection.

3.2 Applying the Tempered Glass Screen Protector

For optimal adhesion and clarity, perform this installation in a dust-free environment.

1. **Clean the Screen:** Use the provided cleaning wipes (if included, otherwise a microfiber cloth) to thoroughly clean your phone's screen. Ensure no dust, smudges, or fingerprints remain.
2. **Align the Protector:** Carefully peel off the protective film from the adhesive side of the tempered glass. Align the screen protector with your phone's screen, paying attention to cutouts for the camera and sensors.
3. **Apply:** Once aligned, gently lower the protector onto the screen. It will begin to adhere automatically.
4. **Remove Bubbles:** If any air bubbles are present, gently push them towards the edges of the screen using a soft cloth or a squeegee card.

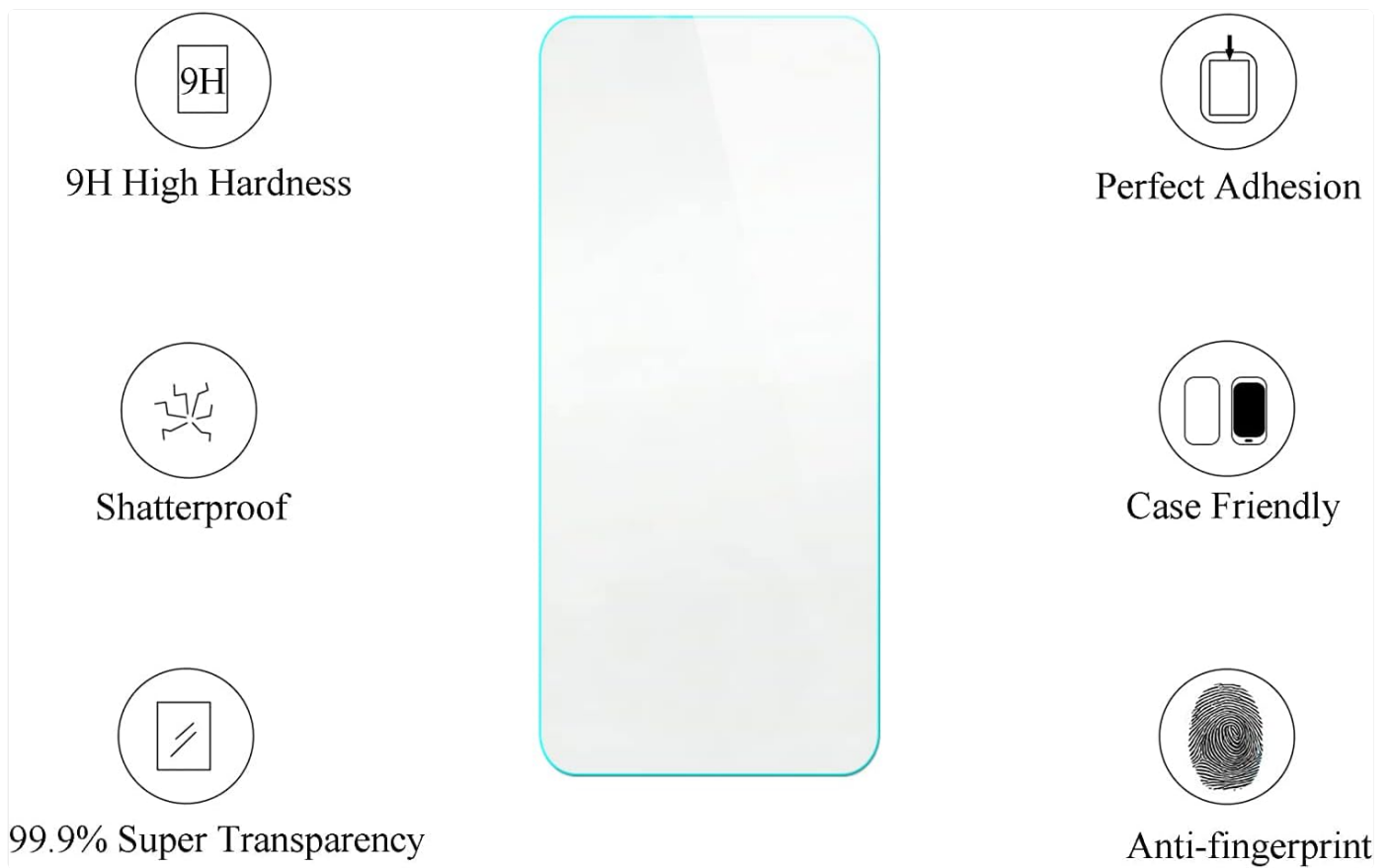


Image 3.2: Key features of the tempered glass screen protector, including 9H high hardness, shatterproof design, perfect adhesion, case-friendly fit, 99.9% super transparency, and anti-fingerprint properties.



Scratch Proof

Scratch proof screen effectively avoids sharp objects scratching or abrasion



Image 3.3: Visual representation of the screen protector's scratch-proof capability, showing its resistance to sharp objects.

3.3 Attaching the Ring Holder

The adhesive metal ring holder can be attached to the back of the case or used separately.

1. **Clean the Surface:** Ensure the back of the phone case (or your phone directly, if preferred) is clean and dry.
2. **Peel Adhesive:** Remove the protective film from the adhesive side of the ring holder.
3. **Position and Press:** Carefully position the ring holder in your desired location on the back of the case. Press firmly for at least 30 seconds to ensure strong adhesion.
4. **Allow to Set:** For best results, allow the adhesive to set for a few hours before actively using the ring holder.

4. OPERATING INSTRUCTIONS

4.1 Using the Ring Holder

- **Enhanced Grip:** Slide your finger through the ring for a more secure hold on your phone, reducing the risk of

accidental drops.

- **Kickstand Function:** Rotate the ring 360 degrees and adjust its angle to prop up your phone for hands-free viewing in landscape or portrait mode.

One-Hand Operation

Touch more spots on the screen

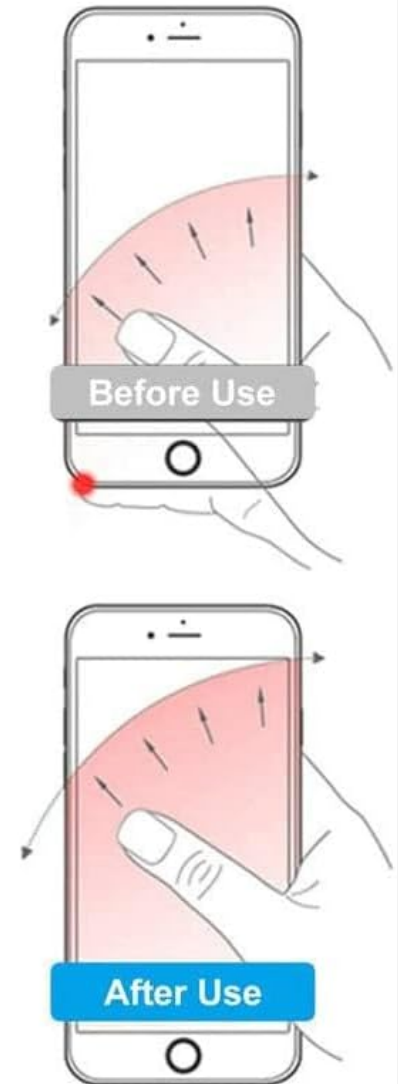
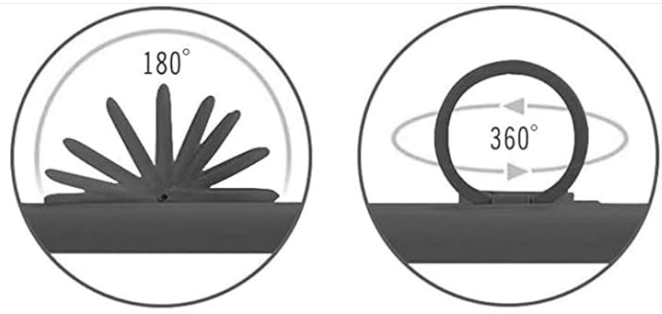


Image 4.1: Demonstration of how the ring holder facilitates one-hand operation, allowing easier access to all areas of the screen.

4.2 Magnetic Car Mount Compatibility

The metal ring holder is compatible with magnetic car mounts. Simply attach your phone (with the case and ring holder) to a magnetic car mount for secure placement while driving.

Note: A magnetic car mount is **not included** with this product. This case does **not support wireless charging** when the ring holder is attached or when using a magnetic car mount due to the metal component.



SUPPORT MAGNETIC CAR MOUNT

Not include magnetic car mount,
not support wireless charging.



Image 4.2: Visual showing the ring holder's 360-degree rotation and its compatibility with a magnetic car mount (car mount not included).

4.3 Luminous Effect

The case features a special layer with golden powder that produces a shining effect under light. Additionally, it has a luminous property that allows it to glow in dark environments after absorbing light (from sunlight or artificial light sources).

Gold glitter craft + Luminous style

The golden powder will appear in the light and sunlight will shine effect. Absorption of light and sunlight will produce a fluorescent effect in a dark environment.



Frosted surface, Scratch-free and fingerprint-free

Golden shiny +Light Absorbing Layer

Ultra HD print pattern layer

PC rugged protective backplate



Image 4.3: Explanation of the gold glitter and luminous style, detailing the multi-layered construction including the PC rugged backplate, ultra HD print pattern, golden shiny layer, and light-absorbing layer.

5. MAINTENANCE

- **Cleaning the Case:** Wipe the case with a soft, damp cloth. For stubborn stains, a mild soap solution can be used. Avoid harsh chemicals or abrasive materials.
- **Cleaning the Screen Protector:** Use a microfiber cloth to gently wipe the screen protector. For smudges, a screen cleaning spray designed for electronics can be used.
- **Avoid Extreme Temperatures:** Do not expose the case or screen protector to extreme heat or cold, as this may affect their material integrity and luminous properties.

6. TROUBLESHOOTING

- **Screen Protector Bubbles:** If bubbles appear after installation, try gently lifting the nearest edge of the protector and reapplying it, pushing the air out with a soft cloth. Small bubbles may disappear on their own within 24-48 hours.
- **Ring Holder Adhesion:** Ensure the surface was clean and dry before application. If the ring holder detaches, clean both surfaces thoroughly and reapply with new adhesive if necessary.
- **Luminous Effect Not Working:** Ensure the case has been exposed to sufficient light (sunlight or artificial) to charge its luminous properties. The effect is temporary and fades over time in darkness.

7. SPECIFICATIONS

Brand	Aroepurt
Model	JSF-FDL
Compatible Devices	Inoi A14, Inoi A14e
Case Material	Hard Polycarbonate (PC), Soft Silicone
Screen Protector Material	Tempered Glass (Polyurethane)
Special Features	360° Rotating Ring Holder, Magnetic Car Mount Compatibility, Luminous Effect, Gold Glitter, Shockproof Airbags, Scratch-resistant, Anti-fingerprint
Screen Protector Hardness	9H
Item Dimensions (L x W x H)	10 x 10 x 10 millimeters (Note: These are general product dimensions and may not reflect the exact case dimensions.)

8. WARRANTY AND SUPPORT

Specific warranty information for this product is not provided in the available product details. For support or inquiries, please contact the seller directly through the platform where the purchase was made.

