

[Manuals.plus](#) /

› [KOSPET](#) /

› KOSPET Tank X2 Ultra GPS Smart Watch User Manual

KOSPET Tank X2 Ultra

KOSPET Tank X2 Ultra GPS Smart Watch User Manual

Model: Tank X2 Ultra | Brand: KOSPET

INTRODUCTION

The KOSPET Tank X2 Ultra GPS Smart Watch is a robust and feature-rich wearable designed for active lifestyles. It combines advanced navigation capabilities with comprehensive health monitoring and communication features, all housed within a durable, military-grade construction.

This manual provides essential information for setting up, operating, and maintaining your KOSPET Tank X2 Ultra Smart Watch to ensure optimal performance and longevity.

PRODUCT FEATURES

- **3D Curved Glass & Full Stainless Steel:** Features a 3D curved glass display with Corning Gorilla screen for enhanced durability and a full stainless steel body, meeting MIL-STD-810H certifications for extreme conditions.
- **Built-in GPS & 6 Satellite Positioning Systems:** Offers fast and accurate location tracking with dual-band and 6-satellite system support, including an internal compass and altimeter sensor.
- **5ATM Waterproof & Damage Resistant:** Designed for water activities, capable of immersion in 50M deep water, and highly resistant to extreme conditions.
- **Bluetooth Calling & AI Voice Assistant:** Enables voice calls directly from the watch and supports AI voice assistant for convenient control of music, weather, alarms, and timers.
- **Multiple Health Monitoring:** Provides 24-hour monitoring of heart rate, blood oxygen, and sleep, with sedentary reminders.
- **170+ Sports Modes with 6 Intelligent Recognition:** Tracks various indoor and outdoor sports activities, including walking, skiing, cycling, and basketball, with real-time data on distance, steps, and calories.
- **1.64" AMOLED Screen:** Boasts a vibrant 1.64-inch AMOLED display for clear visibility.

WHAT'S IN THE BOX

- 1* KOSPET Tank X2 Ultra Smart Watch fitness tracker
- 1* Charging Station
- 1* User Manual

- 1* Warranty Card



Image: Contents of the KOSPET Tank X2 Ultra retail package, including the smartwatch, charging cable, and documentation.

SETUP GUIDE

1. Initial Charging

Before first use, fully charge your KOSPET Tank X2 Ultra Smart Watch. Connect the charging station to a USB power source and place the watch onto the magnetic charging pins. The watch display will indicate charging status.



Image: The KOSPET Tank X2 Ultra Smart Watch shown with its magnetic charging cable.

2. App Installation and Pairing

To unlock the full functionality of your smartwatch, download the "KOSPET FIT" app from the Google Play Store (for Android) or Apple App Store (for iOS).

1. Download and install the "KOSPET FIT" app on your smartphone.
2. Ensure Bluetooth is enabled on your smartphone.
3. Open the KOSPET FIT app, navigate to the "Device" section, and select "Add a new device".
4. Follow the on-screen prompts in the app and on your watch to complete the pairing process. Confirm the Bluetooth pairing request.
5. Allow necessary permissions, including notifications, for the app to function correctly.

Personal Health Monitoring

24-Hour Health Tracking: Monitor your heart rate, blood oxygen levels, calories burned, heartbeat, and steps in real time. Get detailed data to better understand your body's condition.

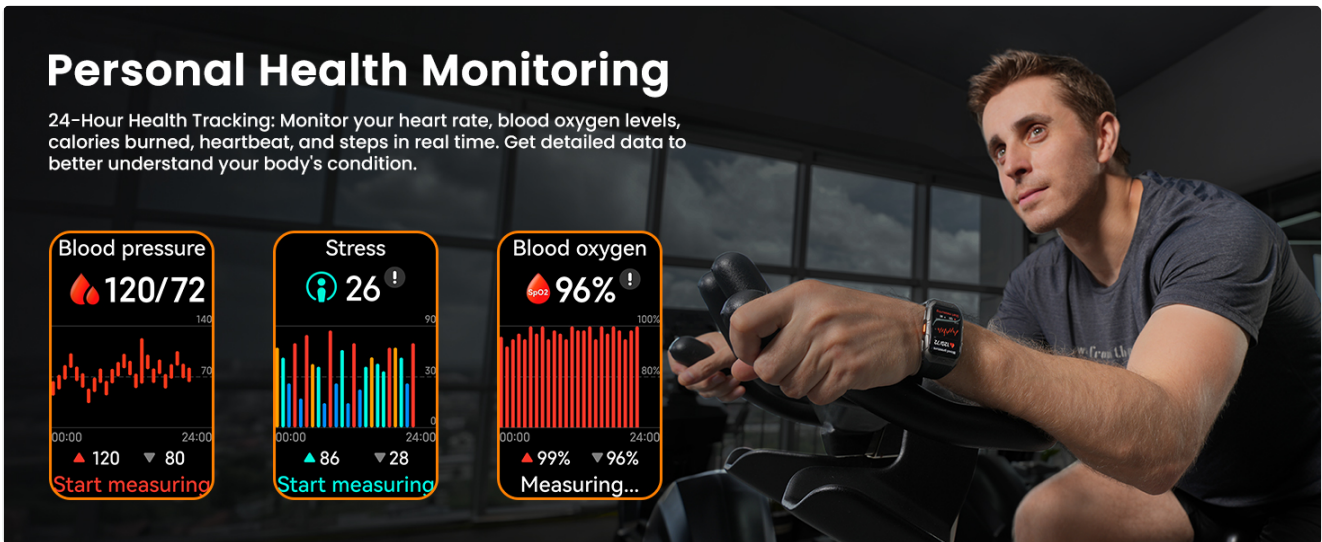


Image: Visual guide demonstrating the steps to connect the KOSPET smartwatch to a smartphone via the KOSPET FIT app.

3. Receiving Notifications (iOS)

1. Ensure the "KOSPET FIT" app remains active in the background.
2. Disable "Do Not Disturb" and "Low Power Mode" on your iPhone.
3. In the KOSPET FIT app, go to "Device" and then "SMS" to enable SMS reminders.
4. In the app, go to "Device" and then "App" to enable notifications for desired applications (e.g., Instagram, YouTube, Facebook).
5. Finally, go to your iPhone's "Settings" and allow "KOSPET FIT" to access "Notifications".



Image: Visual instructions for configuring iOS notifications to display on the KOSPET smartwatch.

4. Receiving Notifications (Android)

1. Ensure the "KOSPET FIT" app remains active. Android users may need to add the app to the whitelist in battery optimization settings.
2. Disable "Do Not Disturb" and "Low Power Mode" on your Android phone.
3. In the KOSPET FIT app, go to "Device" and then "SMS Reminder" to enable SMS notifications.
4. In the app, go to "Device" and then "App Reminder" to enable notifications for desired applications (e.g., Instagram, YouTube, Facebook).
5. Finally, go to your Android phone's "Settings" and allow "KOSPET FIT" to access "Notifications".

Wide Compatibility

Note: The smartwatch is compatible with iOS 10.0+ and Android 5.1+ smartphone devices

IOS Device:



iPhone6 series



iPhone15 series



iPhone14 series



iPhone13 series



iPhone12 series



Android Device:



Galaxy series



Pixel series



Xiaomi series



Huawei series



Other series



Image: Visual instructions for configuring Android notifications to display on the KOSPET smartwatch.

OPERATING YOUR SMART WATCH

Basic Navigation

- **Touchscreen:** Swipe left/right, up/down, and tap to navigate menus and select options.
- **Power Button:** Press to wake/sleep the screen, long-press to power on/off.
- **Sport Button:** Dedicated button for quick access to sports modes.

Health Monitoring

The KOSPET Tank X2 Ultra continuously monitors various health metrics. Access these features through the watch interface or the KOSPET FIT app.

- **Heart Rate Monitor:** Provides 24-hour heart rate tracking.
- **Blood Oxygen Monitor:** Measures your blood oxygen levels.
- **Sleep Tracking:** Monitors sleep stages and provides detailed sleep analysis.
- **Stress Monitor:** Tracks your stress levels throughout the day.
- **Blood Pressure Monitor:** Provides blood pressure readings.

How to connect smart watch?

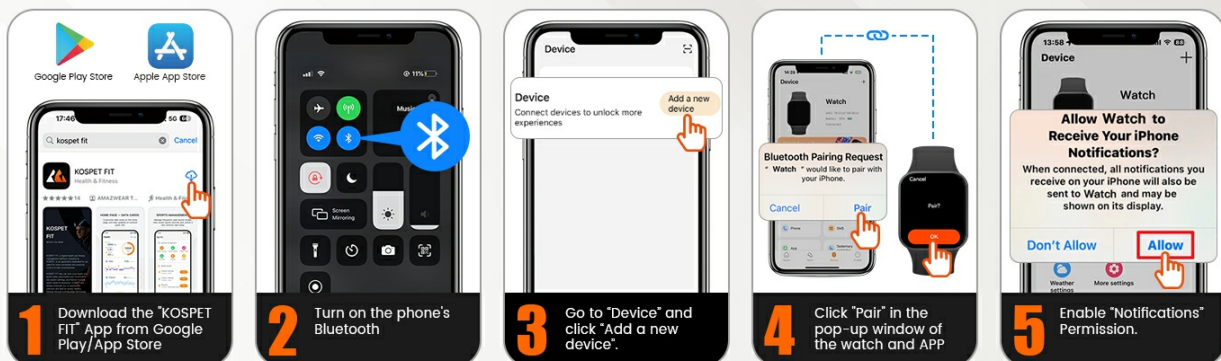


Image: Displays the various health monitoring functions of the KOSPET Tank X2 Ultra, including blood pressure, stress, and blood oxygen.

How to receive message or APP notification? **ios**

1. Ensure the "KOSPET FIT" app remains active (Android users need to add the app to the whitelist in Settings). 2. Disable "Do Not Disturb" & "Low Power Mode". 3. Message sync won't occur if the app logged into other devices or phones in the chat interface.

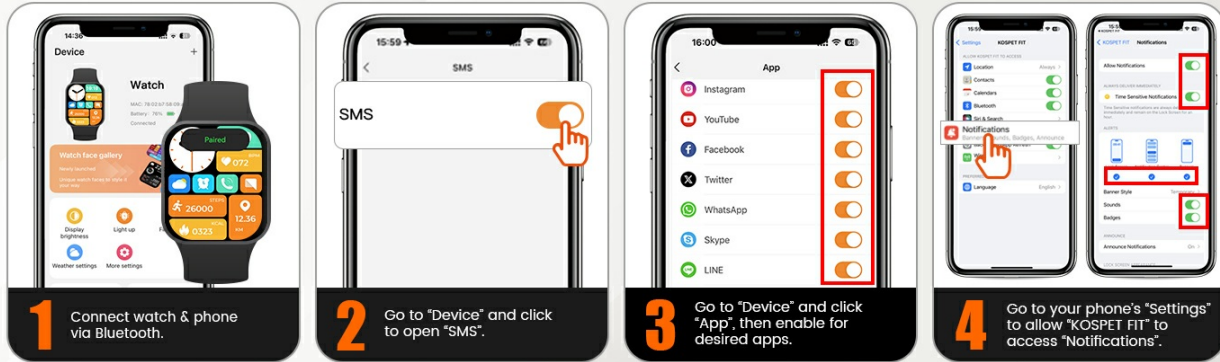


Image: Illustrates the 24-hour sleep tracking capabilities of the KOSPET Tank X2 Ultra, showing sleep stages and analysis.

Sports Modes and GPS

The watch supports over 170 sports modes and features built-in GPS for accurate outdoor activity tracking.

- **Activating a Sport Mode:** Press the Sport button or navigate through the menu to select your desired activity.
- **GPS Tracking:** For outdoor activities, ensure the watch has a clear view of the sky for optimal GPS signal acquisition. The watch supports 6 satellite positioning systems for faster and more accurate positioning.
- **Route Back Support:** Utilize the route back feature to retrace your steps during outdoor adventures.



Image: Depicts the KOSPET Tank X2 Ultra's built-in GPS and route back support, showing a user hiking with a map overlay on the watch.

How to receive message or APP notification? **Android**

1. Ensure the "KOSPET FIT" app remains active (Android users need to add the app to the whitelist in Settings).
2. Disable "Do Not Disturb" & "Low Power Mode".
3. Message sync won't occur if the app logged into other devices or phones in the chat interface.

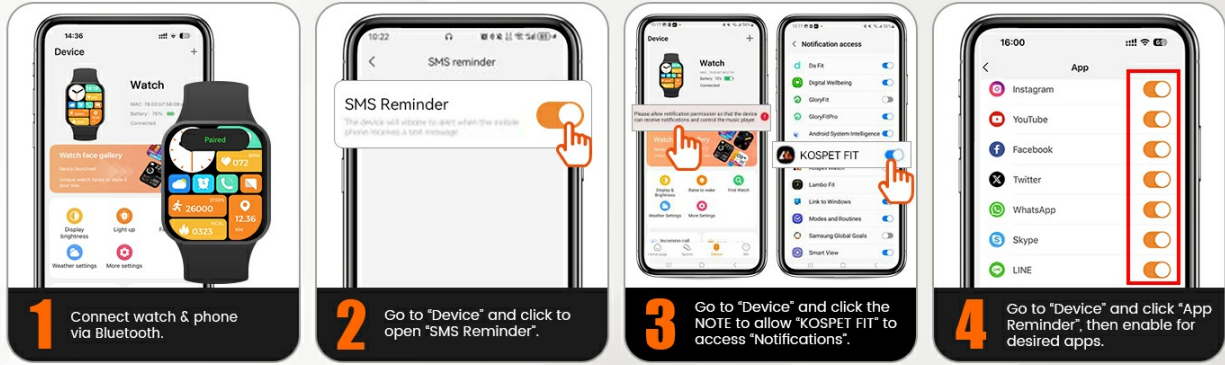


Image: Shows the KOSPET Tank X2 Ultra's extensive list of over 170 sports modes and its smart recognition feature for 6 common sports.

Communication Features

- **Bluetooth Calling:** Make and answer calls directly from your watch when connected to your smartphone.
- **AI Voice Assistant:** Use voice commands for various functions like checking weather, playing music, or setting alarms.
- **Message Notifications:** Receive alerts for calls, SMS, and app notifications (e.g., Facebook, WhatsApp, Instagram).

Size & Packaging included



Image: Demonstrates the Bluetooth calling and powerful voice assistant features of the KOSPET Tank X2 Ultra, including message notifications from various apps.

Additional Features

- **Compass, Altitude, and Air Pressure:** Built-in sensors provide real-time environmental data.
- **Customizable Watch Faces:** Edit watch faces and switch between different widgets to personalize your display.

Military-Grade Smart Watch

- High-temperature Storage Test
- Low-temperature Storage Test
- Contamination by Fluids Test
- Temperature Shock Test
- Salt Spray Test
- Rain Test
- Fungus Test
- Vibration Test
- High-temperature Operating Life Test
- Low-temperature Operating Life Test
- Solar Radiation Test
- Low Pressure Test
- Sand and Dust Test
- Drop Test
- Shock Test

MILITARY GRADE
Drop-Tested
MIL-STD 810H
U.S.A.

Image: Shows the KOSPET Tank X2 Ultra displaying compass, altitude, and air pressure readings, useful for outdoor navigation.

3D Curved Glass Smart Watch

Boasting a 1.64" AMOLED display with a smooth refresh rate and vivid clarity, the KOSPET TANK X2 Ultra offers a stunning visual experience, visible even under direct sunlight. Just raise your wrist to enjoy its vibrant display.

- 1.64" AMOLED Display
- 280×456 Resolution
- 326 PPI
- 1,000 nits Peak Brightness
- 60Hz Refresh Rate
- 16 million Colours

Image: Illustrates the ability to edit and customize watch faces on the KOSPET Tank X2 Ultra with various widgets.

MAINTENANCE

- **Cleaning:** Wipe the watch and strap regularly with a soft, damp cloth. Avoid harsh chemicals or abrasive materials.
- **Water Resistance:** The watch is 5ATM waterproof. While suitable for swimming and showering, avoid exposing it to hot water, steam, or high-pressure water jets, as this can compromise the seals. Rinse with fresh water after exposure to saltwater.
- **Charging:** Use only the provided charging station. Ensure the charging pins are clean and dry before connecting.
- **Storage:** Store the watch in a cool, dry place when not in use. Avoid extreme temperatures.

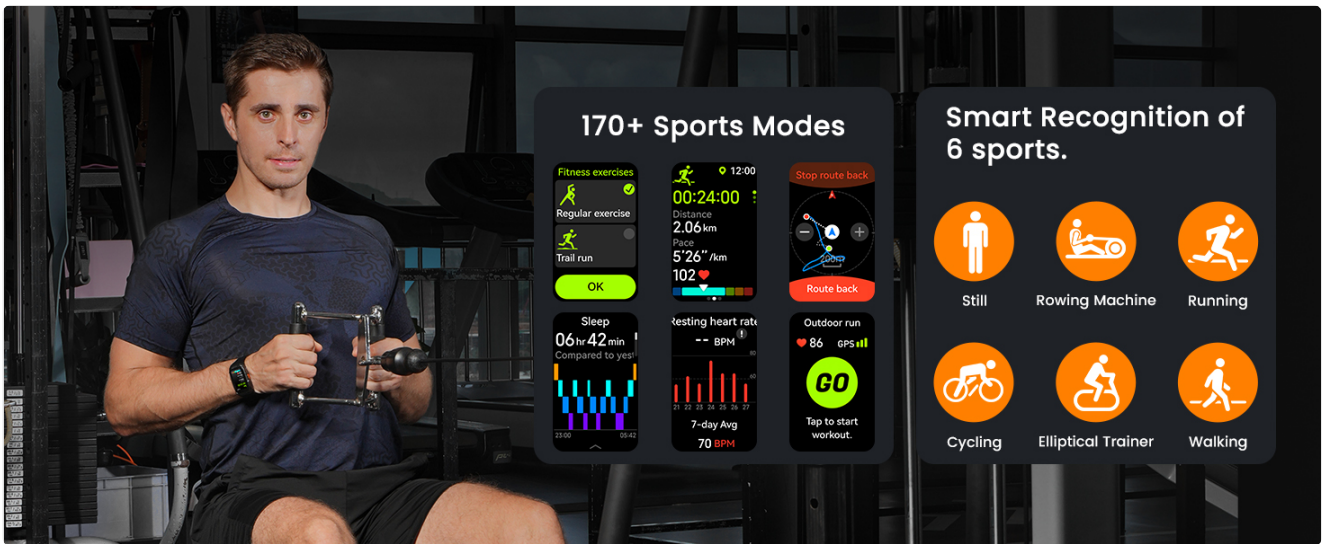


Image: Highlights the 5ATM and IP69K waterproof rating of the KOSPET Tank X2 Ultra, showing its suitability for swimming and other water activities.

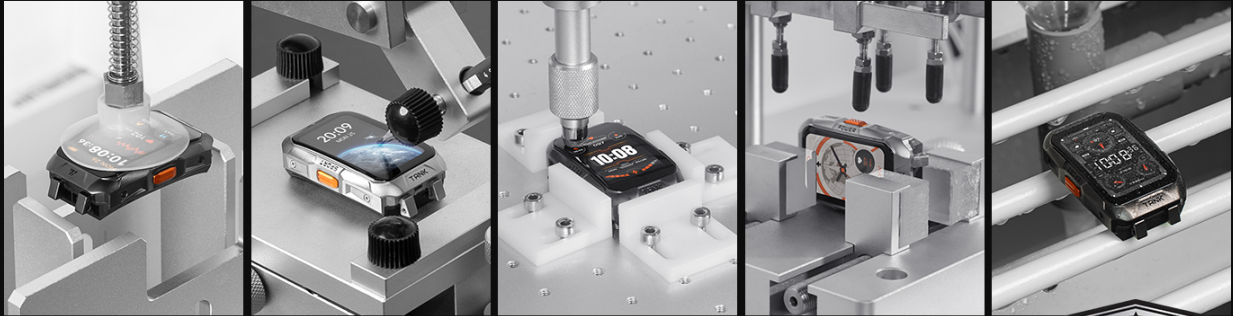
TROUBLESHOOTING

- **Watch not turning on:** Ensure the watch is fully charged. If the battery is completely depleted, it may take a few minutes on the charger before the screen responds.
- **Cannot pair with phone:**
 - Ensure Bluetooth is enabled on your phone and the watch.
 - Make sure the KOSPET FIT app is installed and open.
 - Restart both the watch and your phone.
 - Forget the device in your phone's Bluetooth settings and try pairing again.
- **Inaccurate health data:** Ensure the watch is worn snugly on your wrist, not too tight or too loose. Clean the sensor on the back of the watch regularly.
- **GPS signal issues:** For best GPS performance, ensure you are in an open area with a clear view of the sky. Allow sufficient time for the watch to acquire a signal.
- **Notifications not received:** Review the notification setup steps in the "Setup Guide" section, ensuring all necessary permissions are granted in both the KOSPET FIT app and your phone's system settings. Disable "Do Not Disturb" and "Low Power Mode".

SPECIFICATIONS

Brand	KOSPET
Model Number	Tank X2 Ultra
Screen Size	1.64 Inches
Display Type	AMOLED
Water Resistance	5ATM & IP69K
GPS	Built-in GPS (6 Satellite Positioning Systems)
Connectivity	Bluetooth
Battery Capacity	290 Milliamp Hours

Operating System Compatibility	Compatible for Android and iOS
Item Weight	0.21 Kilograms (7.4 ounces)
Dimensions	4.41 x 4.25 x 2.01 inches (Package)



Military-Grade Smart Watch

- High-temperature Storage Test
- Low-temperature Storage Test
- Contamination by Fluids Test
- Temperature Shock Test
- Salt Spray Test
- Rain Test
- Fungus Test
- Vibration Test
- High-temperature Operating Life Test
- Low-temperature Operating Life Test
- Solar Radiation Test
- Low Pressure Test
- Sand and Dust Test
- Drop Test
- Shock Test

MILITARY GRADE
Drop-Tested
MIL-STD 810H
U.S.A.

Image: Visual representation of the KOSPET Tank X2 Ultra's dimensions and included packaging items.

WARRANTY AND SUPPORT

Your KOSPET Tank X2 Ultra Smart Watch comes with a Warranty Card included in the package. Please refer to this card for detailed warranty terms and conditions.

For technical support, troubleshooting assistance, or warranty claims, please contact KOSPET customer service through their official website or the contact information provided in your Warranty Card.

You can also visit the official KOSPET store on Amazon for additional product information and support resources: [KOSPET Amazon Store](#)