

Seenda KOE200

Seenda KOE200 Wired RGB Backlit Keyboard User Manual

Model: KOE200 (CK261)



INTRODUCTION

This manual provides detailed instructions for the Seenda KOE200 Wired RGB Backlit Keyboard. Please read this guide thoroughly to ensure proper setup, operation, and maintenance of your device. This keyboard is designed for use with Windows and Mac OS systems, offering a comfortable typing experience with customizable RGB backlighting and versatile connectivity.

SETUP INSTRUCTIONS

1. Connecting the Keyboard

The Seenda KOE200 keyboard features a 2-in-1 USB-A and Type-C connector for broad compatibility.

- 1. Identify the correct port:** Locate an available USB-A or USB-C port on your computer, laptop, MacBook, or iMac.
- 2. Connect the cable:** Plug the appropriate end of the keyboard's cable into your device's port. The keyboard is plug-and-play and does not require additional drivers.

COMPATIBLE FOR WINDOWS AND MAC OS



2-in-1 USB A and Type C Connector



USB A Port



Type C Port

Image: The keyboard's 2-in-1 USB-A and Type-C connector for flexible device connection.



Image: Detailed view of the USB-A and Type-C connectors.

2. System Compatibility Switch

The keyboard is compatible with both Windows and Mac OS. Use the dedicated system switch to select the correct operating mode.

- Press the **WIN** button to switch to Windows mode.
- Press the **MAC** button to switch to Mac OS mode.

The corresponding indicator light (WIN or MAC) located above the numeric keypad will illuminate to confirm the selected mode.



Image: Indicator lights for Windows and Mac OS modes, along with Num Lock and Caps Lock indicators.

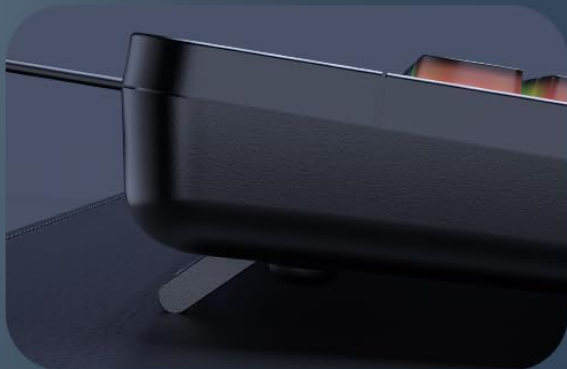
3. Ergonomic Adjustments

For enhanced comfort during extended use, the keyboard includes a retractable kickstand and an integrated palm rest.

- **Retractable Stand:** Flip out the stands located on the underside of the keyboard to adjust the typing angle.
- **Palm Rest:** The integrated palm rest provides support for your wrists, promoting a more natural typing posture.
- **Phone Holder:** A built-in slot at the top of the keyboard can securely hold smartphones and 7-inch tablets horizontally.

ERGONOMIC DESIGN

Palm rest keeps your hands in a more comfortable typing position



Retractable Stand



Wrist Rest

Image: Side view illustrating the ergonomic design with the retractable stand and palm rest.

BUILT-IN PHONE & TABLET HOLDER

Compatible with phones and 7 inch tablets (in horizontal)



Image: Top-down view of the keyboard with a phone in the integrated holder, showing its dimensions.

OPERATING INSTRUCTIONS

1. RGB Backlight Control

The keyboard features adjustable RGB backlighting with multiple modes and brightness levels.

- **Change Backlight Mode:** Press **Fn** + **End** to cycle through Constant, Breathing, and Off modes.
- **Adjust Brightness:** Press **Fn** + **PgUp** (brightness up) or **Fn** + **PgDn** (brightness down) to adjust the constant backlight brightness.
- **Adjust Breathing Frequency:** Press **Fn** + **+** (faster) or **Fn** + **-** (slower) to adjust the speed of the breathing backlight effect.



Image: Visual guide for controlling RGB backlight settings.

2. Multimedia and Function Keys

The keyboard includes dedicated multimedia and function keys for quick access to various controls. These keys are typically accessed by pressing the **Fn** key in combination with the corresponding F-keys (F1-F12) or other designated keys.

- **F1-F12:** Standard function keys. Some may have secondary multimedia functions (e.g., volume, media playback) when pressed with **Fn**. Refer to the keycap legends for specific functions.
- **Num Lock, Caps Lock:** Indicator lights for these functions are located above the numeric keypad.

MAINTENANCE

To ensure the longevity and optimal performance of your Seenda KOE200 keyboard, follow these maintenance guidelines:

- **Cleaning:**
 - Disconnect the keyboard from your device before cleaning.
 - Use a soft, lint-free cloth slightly dampened with water or a mild cleaning solution to wipe the surface.
 - Avoid using harsh chemicals, abrasive cleaners, or solvents.
 - For dust and debris between keys, use compressed air.
- **Storage:** Store the keyboard in a dry, cool place away from direct sunlight and extreme temperatures.
- **Handling:** Avoid dropping the keyboard or exposing it to excessive force, which can damage internal components.

TROUBLESHOOTING

Problem	Possible Cause	Solution
Keyboard not responding.	Loose connection, incorrect port, system issue.	<ul style="list-style-type: none">• Ensure the USB/Type-C cable is securely plugged into the device.• Try a different USB/Type-C port on your computer.• Restart your computer.
Backlight not working or stuck.	Backlight turned off, brightness set to minimum, software glitch.	<ul style="list-style-type: none">• Press Fn + End to cycle through backlight modes (Constant, Breathing, Off).• Increase brightness using Fn + PgUp.• Disconnect and reconnect the keyboard.
Keys not typing correctly (e.g., wrong characters).	Incorrect operating system mode selected.	<ul style="list-style-type: none">• Ensure the correct system mode is selected (WIN for Windows, MAC for Mac OS) using the dedicated buttons.

SPECIFICATIONS

- **Model:** KOE200 (CK261)
- **Brand:** Seenda
- **Connectivity:** Wired (USB-A, USB-C 2-in-1 connector)
- **Compatibility:** Windows, Mac OS
- **Backlighting:** RGB (Rainbow) with adjustable modes and brightness
- **Special Features:** Ergonomic design, integrated palm rest, retractable stand, built-in phone/tablet holder
- **Dimensions:** 43.5 cm (L) x 18.5 cm (W) x 2.6 cm (H)
- **Weight:** 830 g
- **Included Components:** USB A and Type C Cable



Image: Keyboard dimensions and ergonomic features.




WARRANTY AND SUPPORT

Seenda products are designed for reliability and performance. For warranty information, technical support, or customer service inquiries, please refer to the warranty card included with your product or visit the official Seenda website. Keep your purchase receipt for warranty claims.

Manufacturer: SEENDA



Related Documents - KOE200

	<p>Seenda MS201 Wired RGB Backlit Mouse User Manual</p> <p>User manual for the Seenda MS201 Wired RGB Backlit Mouse, detailing product features, specifications, safety warnings, and EU declaration of conformity.</p>
	<p>Seenda 7-Color Backlit Wireless Keyboard ISJ-WJK70BT4 User Manual</p> <p>User manual for the Seenda 7-Color Backlit Wireless Keyboard, Model ISJ-WJK70BT4. Includes instructions for setup, Bluetooth pairing with various devices (Windows, macOS, iPadOS, iOS, Samsung Tablet), and backlight operation.</p>
	<p>Seenda Foldable Bluetooth Keyboard with Touchpad User Manual</p> <p>User manual for the Seenda Foldable Bluetooth Keyboard with Touchpad (Model KTU-402), detailing setup, connection, features, and troubleshooting for iOS, Android, Windows, and Mac operating systems.</p>
	<p>Seenda KUW01 Wired Ergonomic Illuminated Keyboard User Manual</p> <p>User manual for the Seenda KUW01 wired ergonomic illuminated keyboard, detailing product features, connectivity, backlight settings, and safety warnings.</p>
	<p>Seenda HKC310 Wired Headphones User Manual - Features, Specs, Operation</p> <p>Comprehensive user manual for Seenda HKC310 wired headphones. Learn about product features, operation controls, technical specifications, and FCC compliance. Features Type-C connectivity and volume limit options for hearing protection.</p>
	<p>Seenda MOE300 Ergonomic Wireless Mouse User Manual</p> <p>User manual for the Seenda MOE300 ergonomic wireless mouse, featuring 2.4G connectivity, USB & Type-C receiver, and rechargeable design. Available in English, German, French, and Japanese.</p>