

Manuals.plus /

› ZTHY /

› ZTHY DR02P R73TC Laptop Battery Replacement User Manual

## ZTHY K5XWW



# ZTHY DR02P R73TC Laptop Battery Replacement User Manual

Model: K5XWW

## INTRODUCTION

---

This manual provides essential information for the installation, operation, and maintenance of your ZTHY DR02P R73TC 54Wh 3-Cell Laptop Battery Replacement. Please read this guide thoroughly before installation and use to ensure optimal performance and safety.

The ZTHY DR02P R73TC battery is designed as a direct replacement for various Dell Latitude and Precision laptop models, offering reliable power and extended battery life.

## SAFETY INFORMATION AND PRECAUTIONS

---

- **Discharge Warning:** Discharge the new battery to 10-20% (not 0%) before the first full charge. Then charge and cycle 3-4 times to properly activate the new battery.
- **Handling:** Do not disassemble, crush, or puncture the battery.
- **Disposal:** Do not dispose of the battery in fire or water. Follow local regulations for battery recycling.
- **Storage:** If storing the battery for a long period, charge it to more than 80% at least once a month.
- **Charging:** Avoid connecting the AC adapter for extended periods while using the battery, as this may reduce battery lifespan.
- **Environment:** Prevent exposure to extreme temperatures and moisture.
- **Certifications:** All ZTHY products are Certified by CE and FCC for safety and compliance.

## INSTALLATION GUIDE

---

Before beginning the installation, ensure your laptop is powered off and disconnected from the AC adapter. It is recommended to wear anti-static gloves to prevent static discharge.



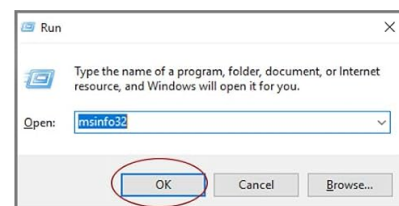
## How to check your laptop model



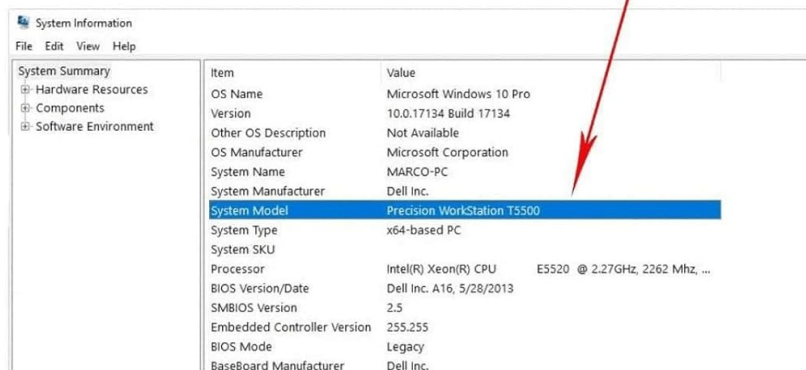
1) press Windows + R



2) type "msinfo32" then click OK



3) find "System Model" in the pop-up window



*Image: ZTHY Laptop Battery with included mini screwdrivers and pry tool. These tools assist in the installation process.*

1. **Power Off and Disconnect:** Turn off your laptop completely and disconnect the power adapter.
2. **Access Battery Compartment:** Carefully open the laptop's back cover to access the internal components. You may need to remove several screws.
3. **Disconnect Old Battery:** Locate the old battery and gently disconnect its cable from the motherboard. This prevents accidental damage during removal.
4. **Remove Old Battery:** Unscrew the old battery from its housing. Keep track of all screws, as they are often small and easily lost.
5. **Install New Battery:** Carefully place the new ZTHY battery into the battery compartment. Ensure it aligns correctly with the screw holes.
6. **Secure New Battery:** Screw the new battery into place.
7. **Connect New Battery:** Reconnect the new battery's cable securely to the motherboard interface. Ensure a tight connection to prevent recognition issues.
8. **Reassemble Laptop:** Replace the laptop's back cover and secure it with the screws.
9. **Initial Power Cycle:** Connect the AC adapter and power on the laptop. If the battery is not recognized, try reinstalling it, ensuring all connections are secure.

**Note:** If you are unsure about any step, searching for specific laptop model battery replacement videos on

platforms like YouTube can provide visual guidance.

## CHECKING YOUR LAPTOP MODEL

To ensure compatibility or for troubleshooting, you may need to verify your laptop's exact model. Follow these steps:

### How to check your laptop model

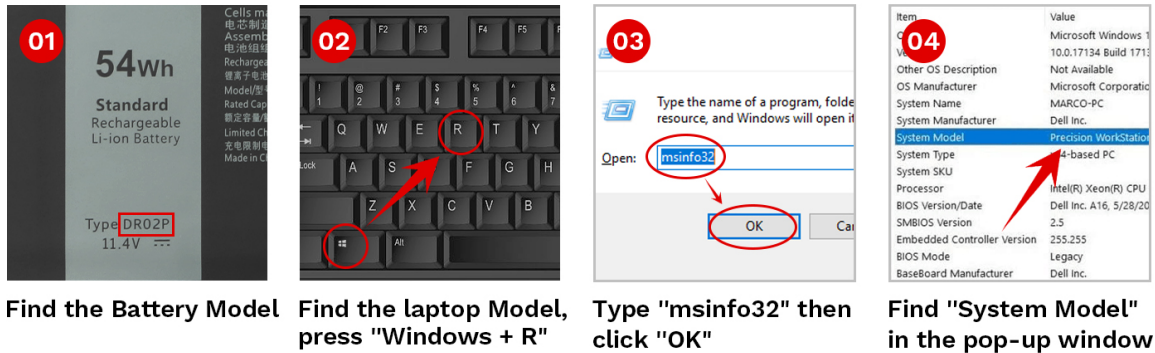


Image: Visual guide on how to find your laptop's system model using the 'msinfo32' command in Windows.

1. Press the **Windows key + R** simultaneously to open the Run dialog box.
2. Type "**msinfo32**" into the Run dialog box and click "**OK**".
3. In the System Information window that appears, locate "**System Model**" to find your laptop's model number.

## FIRST USE AND BATTERY CARE

Proper care and initial conditioning can significantly extend the lifespan and performance of your new battery.

- **Initial Conditioning:** For the first use, discharge the new battery to approximately 10% (do not let it drain to 0%), then fully charge it to 95%. Repeat this cycle 3-4 times. This helps calibrate the battery and optimize its performance.
- **Power Plan Optimization:** Adjust your laptop's power plan settings to "Power Saver". In advanced power settings, consider reducing the processor state to 20% when on battery to conserve power.
- **Keep Clean:** Regularly clean your laptop to prevent dust accumulation in vents, which can cause overheating and affect battery life.
- **Disable Unused Features:** Turn off Wi-Fi, Bluetooth, and other unnecessary features when not in use to save battery power.

## TROUBLESHOOTING

### Battery Not Recognized

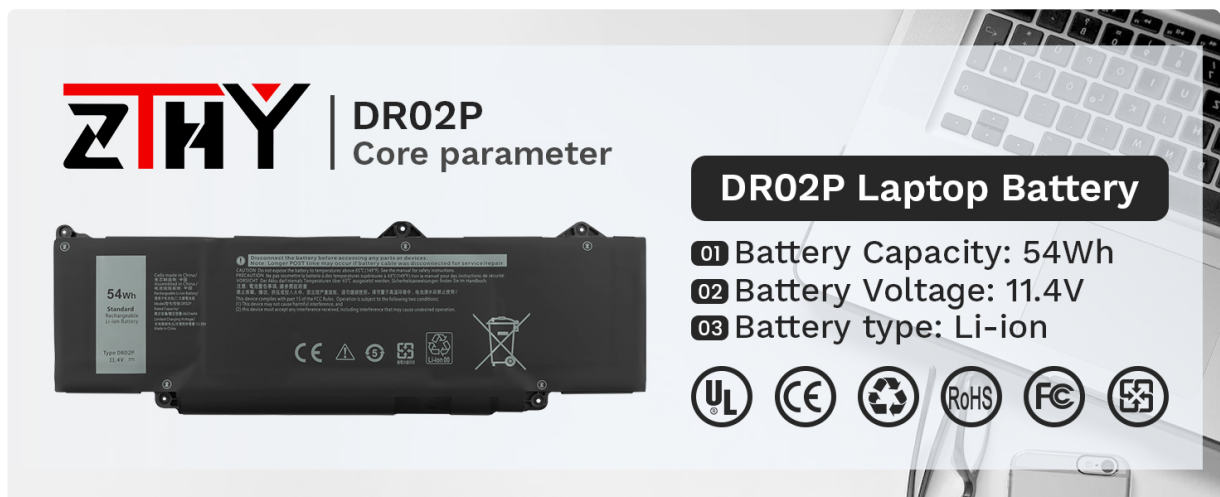
- **Reinstallation:** The most common cause is a loose connection. Reinstall the battery and ensure the battery cable is tightly inserted into the motherboard interface.
- **Conductive Material:** Check for any damage to the conductive material at the laptop motherboard's battery contact points. Compare with your original battery if possible.

- **Driver Update:** Verify if the battery driver is in normal condition. If not, download and update the corresponding driver software from your laptop manufacturer's website.

## General Troubleshooting Steps

1. Turn off the laptop.
2. Unplug the AC power adapter.
3. Remove the battery.
4. Reconnect the AC power adapter.
5. Turn on the laptop and allow the operating system to boot completely.
6. Once logged in, perform a normal shutdown.
7. Unplug the AC power adapter again.
8. Reinstall the battery.
9. Reconnect the AC power adapter and power on the laptop.

## PRODUCT SPECIFICATIONS



The image displays the ZTHY DR02P Laptop Battery with its core parameters and certifications. The battery is shown in a black, rectangular form with a white label on the left side that reads "54Wh" and "Type DR02P 11.4V". The main body of the battery has a white label with technical specifications and safety warnings in Chinese and English. To the right of the battery, the text "DR02P Laptop Battery" is displayed in a black box. Below this, three numbered items list the battery's capacity (54Wh), voltage (11.4V), and type (Li-ion). At the bottom, a row of six circular icons represents various certifications: UL, CE, a recycling symbol, RoHS, FC, and another recycling symbol.

**ZTHY** | DR02P  
Core parameter

**DR02P Laptop Battery**

- 01 Battery Capacity: 54Wh
- 02 Battery Voltage: 11.4V
- 03 Battery type: Li-ion

UL CE RoHS FC

*Image: Overview of the ZTHY DR02P Laptop Battery's core parameters including capacity, voltage, and type.*

Feature	Detail
Battery Type	Li-ion
Color	Black
Voltage	11.4V
Capacity	54Wh (4623 Milliamp Hours)
Recharge Cycles	Up to 500 recharge cycles
Item Weight	10.5 ounces
Package Dimensions	12.76 x 5.59 x 1.06 inches
Model Number	K5XWW
Manufacturer	Huizhou Jiataiyuan Electronic Technology Co.,Ltd
Country of Origin	China

### Compatible Part Numbers

DR02P, R73TC, 2X1V9, GRWKG, 803W6, CN-0803W6, JTG7N





### Compatible Laptop Models

- Dell Latitude 3440, 5440, 5450, 5540, 5550, 7455 Series
- Dell Precision 3480, 3490, 3580, 3590 Mobile Workstation Series
- Dell Inspiron 14 Plus 7441 Series
- Dell Latitude 13 5340 Laptop or 2-in-1 Series
- Dell Latitude 13 5350 Laptop or 2-in-1 Series
- Dell P127F, P127F001, P169G, P169G001, P181G, P181G001, P182G, P182G001, P28F, P28F004, P170G, P170G001, P37G, P37G004, P165G001, P165G002, P165G003

### QUALITY ASSURANCE AND SUPPORT

---



 <b>Entire Protect</b>	 <b>Premium Microchip</b>	 <b>Overheat Protection</b>	 <b>Over Charge</b>
--	---	--	---

*Image: ZTHY battery quality assurance features including entire protection, premium microchip, overheat protection, and overcharge protection.*

ZTHY is committed to providing high-quality products. This battery features advanced safety mechanisms including entire protection, premium microchips, overheat protection, and overcharge protection.

For further assistance, technical support, or warranty inquiries, please visit the official ZTHY store or contact customer service through the platform where you purchased the product.

**Visit the ZTHY Official Store**