

Tapo Tapo C425 KIT

TP-Link Tapo C425 KIT Wireless Battery Security Camera Kit

USER MANUAL

1. Introduction

This manual provides detailed instructions for the installation, operation, and maintenance of your TP-Link Tapo C425 KIT 2K 4MP QHD Wireless Battery Security Camera Kit. The Tapo C425 is designed to deliver high-quality surveillance with features such as 2K QHD resolution, color night vision, AI detection, and robust weatherproofing, powered by a rechargeable battery and a solar panel for continuous operation.

Please read this manual thoroughly before using the product to ensure proper setup and optimal performance.

2. What's in the Box

Verify that all components are present in your package:

- Tapo C425 Camera
- Tapo A201 Solar Panel
- Extension Cable
- Mounting Kit
- User Manual



The retail packaging for the Tapo Smart Wire-Free Security Camera Kit (Tapo C425 KIT), showing the camera and solar panel on the box.

3. Product Overview and Features

The Tapo C425 KIT offers advanced surveillance capabilities:

- **Uninterrupted Power Supply:** Powered by a rechargeable battery and a solar panel for continuous operation.
- **Colorful Night Vision with Star Sensor:** Delivers full-color images even in low-light conditions.
- **2K QHD Live View:** Provides clear, detailed video footage.
- **Free AI Detection:** Smart AI identifies people, pets, and vehicles, reducing false alerts.
- **IP66 Weatherproof:** Designed to withstand various outdoor weather conditions.



Image of the Tapo C425 camera and the Tapo A201 solar panel, showcasing the complete kit.

works with
Google Home

works with
alexa



Continuous Solar
Charging



2K QHD
Live View



150° Super-Wide
FOV



Person/Pet/Vehicle
Detection



Color Night
Vision



Robust
Weatherproofing



Local & Cloud
Storage



Two-Way Audio &
Built-in Siren

The Tapo C425 camera mounted with its solar panel, highlighting compatibility with Google Home and Alexa, along with key features like continuous solar charging, 2K QHD live view, 150° super-wide FOV, AI detection, color night vision, robust weatherproofing, local/cloud storage, and two-way audio with built-in siren.



Go Where Wires Can't

Captures the perfect shot while not being limited to power outlet placement.

tapo

The Tapo C425 camera and solar panel mounted on the exterior of a house, illustrating its wireless capability and flexible placement.

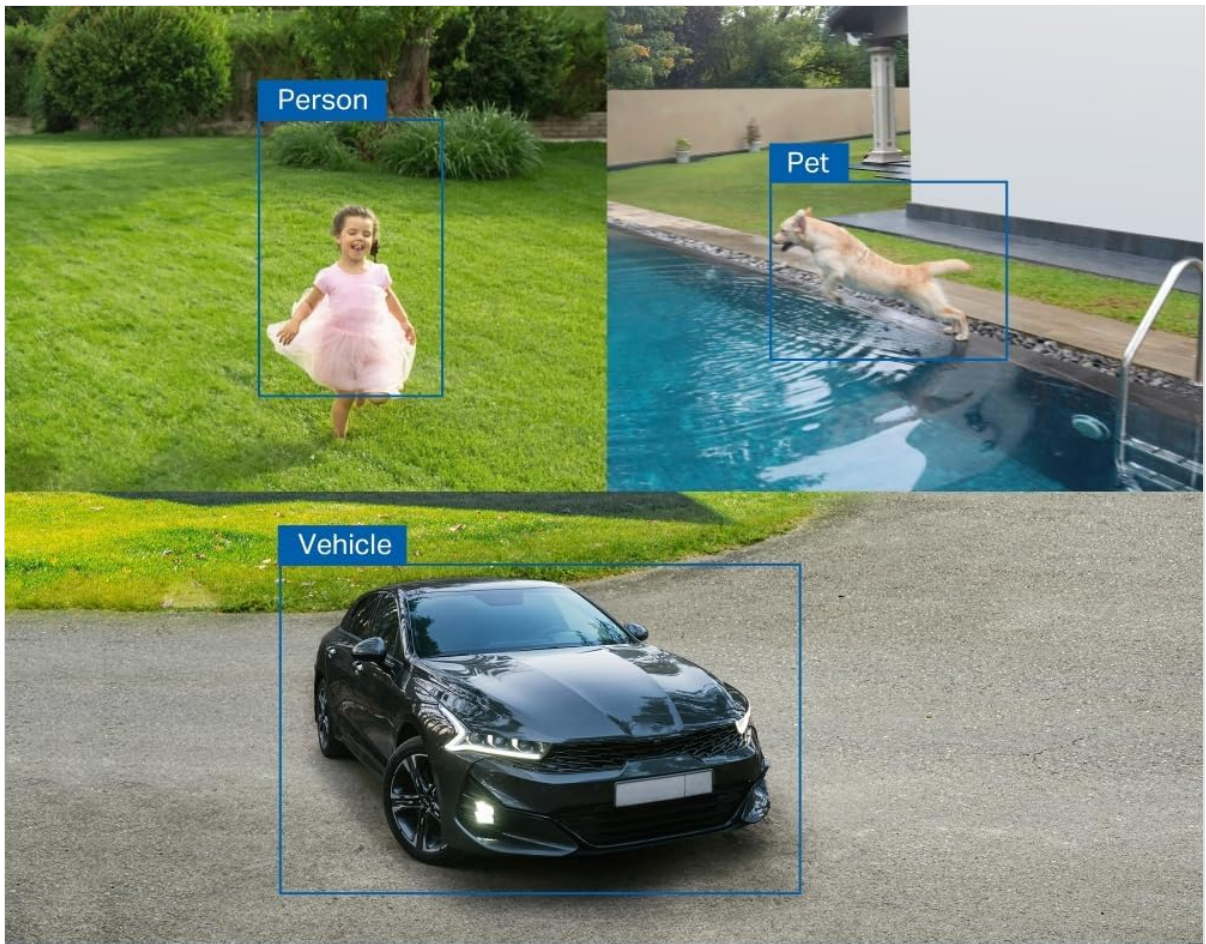


2K QHD Live View

Say goodbye to blurry images and hello to crystal-clear details.

tapo

A child playing with a dog in a grassy yard, with an inset circle showing a close-up of a red spiky ball, demonstrating the 2K QHD live view clarity.



Multiple AI Detection, All for Free

Smart AI identifies people, pets, and vehicles while only sending you alerts when truly needed.

tapo

Three separate images demonstrating AI detection: a child (person), a dog jumping into a pool (pet), and a car in a driveway (vehicle), with bounding boxes indicating detection.

Tapo 150° Wide FOV

Other 120° FOV



See Wider, See More Details

Expands your visual coverage with 150° FOV,
keeping an eye on vital areas.

tapo

An image showing a swimming pool and backyard, with an overlay comparing the Tapo 150° Wide FOV to a narrower 120° FOV, illustrating the expanded visual coverage.



Color Night Vision

Offers full-color images at night with built-in spotlights and a starlight sensor.

tapo

A black car parked in a driveway at night, illuminated by the camera's spotlights, demonstrating the color night vision capability.



IP66 Weatherproof Camera

Works well in rain, snow, dust and heat, operating reliably in harsh environments.

tapo

A collage of images showing the Tapo C425 camera in various weather conditions: rain, snow, and bright sunlight, emphasizing its IP66 weatherproof rating.



Secure Local & Cloud Storage

Save all your important moments to a microSD card or subscribe to Tapo Care cloud service.

tapo

A close-up of the Tapo C425 camera with a microSD card being inserted into its slot, illustrating the local storage option.

4. Setup

1. **Charge the Camera:** Before initial use, fully charge the Tapo C425 camera using a standard USB charger (not included) or by connecting it to the solar panel in direct sunlight.
2. **Download the Tapo App:** Search for "Tapo" in the App Store or Google Play and download the official Tapo app.
3. **Create a Tapo Account:** Open the app and follow the on-screen instructions to create a new Tapo account or log in if you already have one.
4. **Add Your Device:** In the Tapo app, tap the "+" icon to add a new device. Select the Tapo C425 and follow the in-app instructions to connect it to your Wi-Fi network.
5. **Mount the Camera and Solar Panel:** Choose an optimal location for your camera and solar panel. Ensure the solar panel receives ample direct sunlight throughout the day. Use the provided mounting kit to securely attach both the camera and the solar panel. Connect the solar panel to the camera using the extension cable if needed.
6. **Adjust Camera Angle:** Adjust the camera's angle to cover your desired surveillance area.

5. Operating Instructions

Once set up, operate your Tapo C425 camera using the Tapo app:

- **Live View:** Open the Tapo app and select your C425 camera to view the live feed.
- **Recording and Playback:** Access recorded videos from the app's playback section. You can record continuously to a microSD card (up to 512GB, not included) or subscribe to Tapo Care cloud service for cloud storage.
- **Two-Way Audio:** Use the microphone and speaker icons in the live view to communicate with visitors or deter intruders.
- **AI Detection Settings:** Customize detection zones, sensitivity, and notification preferences for person, pet, and vehicle detection in the app's settings.
- **Siren and Light:** Manually activate the built-in siren and spotlights from the app for immediate deterrence.
- **Privacy Zone:** Set up privacy zones within the app to exclude certain areas from recording.

6. Maintenance

- **Cleaning:** Regularly wipe the camera lens and solar panel surface with a soft, damp cloth to ensure clear vision and efficient solar charging. Avoid abrasive cleaners.
- **Battery Care:** While the solar panel provides continuous charging, ensure the camera's battery level remains adequate, especially during prolonged periods of low sunlight.
- **Firmware Updates:** Keep your camera's firmware updated through the Tapo app to ensure optimal performance, security, and access to new features.
- **Environmental Considerations:** Although weatherproof, avoid prolonged exposure to extreme temperatures outside its operating range.

7. Troubleshooting

- **Camera Not Powering On:** Ensure the battery is charged. If using the solar panel, verify it's receiving direct sunlight and the cable connection is secure.
- **No Wi-Fi Connection:** Check your Wi-Fi router's status. Ensure the camera is within range of your Wi-Fi signal. Try restarting both the camera and your router.
- **Poor Image Quality:** Clean the camera lens. Ensure there are no obstructions in the camera's field of view. Check your Wi-Fi signal strength, as a weak signal can affect video quality.
- **Motion Detection Not Working:** Verify that motion detection is enabled in the Tapo app settings. Adjust sensitivity and detection zones.
- **Solar Panel Not Charging:** Ensure the solar panel is positioned to receive maximum direct sunlight. Clean the panel surface. Check the connection cable for damage.

For more detailed troubleshooting or technical support, please refer to the support section within the Tapo app or visit the official TP-Link Tapo website.

8. Specifications

Feature	Specification
Model Name	Tapo C425 KIT
Mounting Type	Wall Mount
Video Capture Resolution	1920p (2K QHD)
Color	white
Number of Items	1
Included Components	Extension Cable, Mounting Kit, Tapo A201 Solar Panel, Tapo C425, User Manual
Wireless Communication Technology	Wi-Fi
Item dimensions L x W x H	2.36 x 2.36 x 3.54 inches
Batteries Required?	No (1 12V batteries included)
Item Weight	4.4 pounds (2 Kilograms)
Low light technology	Night Color
Video Capture Format	MP4
Unit Count	1.0 Count
Maximum Webcam Image Resolution	50 MP
Manufacturer	TP-Link
Brand	Tapo
Indoor/Outdoor Usage	Outdoor
Compatible Devices	Smartphone, Tablet
Connectivity Protocol	Wi-Fi

9. Warranty and Support

This product comes with a manufacturer's warranty. Please refer to the warranty card included in your package or visit the official TP-Link Tapo website for detailed warranty information and terms.

For technical support, product registration, or further assistance, please visit the TP-Link support website or contact their customer service directly. The Tapo app also provides a comprehensive help section and

