



[Manuals.plus](#) /

› [GOWENIC](#) /

› GOWENIC Digital Camera (Model GOWENIC8fderhqtatb-12) User Manual

## GOWENIC GOWENIC8fderhqtatb-12

# GOWENIC Digital Camera User Manual

Model: GOWENIC8fderhqtatb-12

## INTRODUCTION

---

Welcome to your GOWENIC Digital Camera. This manual provides comprehensive instructions for setting up, operating, and maintaining your camera to ensure optimal performance and longevity. Please read this manual carefully before using your camera.

## WHAT'S IN THE BOX

---

Verify that all items are present in your package:

- Digital Camera
- USB Cable
- User Manual (this document)
- Storage Bag
- Lanyard
- Card Reader



Image: The GOWENIC Digital Camera shown with its accessories, including the USB cable, lanyard, storage bag, and card reader.

## SETUP

---

### 1. Battery Installation

1. Locate the battery compartment on the bottom of the camera.
2. Slide the battery compartment cover to open it.
3. Insert the provided Lithium Ion battery (750 mAh) according to the polarity indicators inside the compartment.
4. Close the battery compartment cover securely.

### 2. Memory Card Installation

The camera supports SD cards up to 128GB (not included).

1. Locate the memory card slot, typically next to the battery compartment or on the side.
2. Insert the SD card with the metal contacts facing the front of the camera until it clicks into place.

3. To remove, gently press the card until it springs out.



Image: Bottom view of the camera, illustrating the location of the battery and memory card slots.

### 3. Charging the Camera

Use the provided USB cable to charge the camera directly.

1. Connect the small end of the USB cable to the camera's USB port.
2. Connect the larger end of the USB cable to a USB power adapter (not included) or a computer's USB port.
3. The charging indicator light will illuminate during charging and turn off when fully charged.

### 4. Powering On/Off

Press and hold the power button, usually located on the top or side of the camera, to turn the camera on or off.

## OPERATING THE CAMERA

---

### 1. Basic Photography

The camera supports 56MP photography for high-resolution images.

- **Autofocus:** Lightly press the shutter button to allow the camera to focus on your subject. Once focused, press the shutter button fully to capture the photo.
- **Shutter Button:** Located on the top of the camera, this button is used to take pictures.
- **Zoom:** Use the 'W' (Wide) and 'T' (Telephoto) buttons, typically located near the shutter, to adjust the 20x digital zoom.

# Autofocus

At the push of a button, you can ensure optimal image clarity.



Image: The camera's autofocus feature in action, highlighting how it sharpens the subject.

## Autofocus

Pressing the shutter button halfway to focus and pressing the shutter again for vivid, clear images makes photography simple and easy.

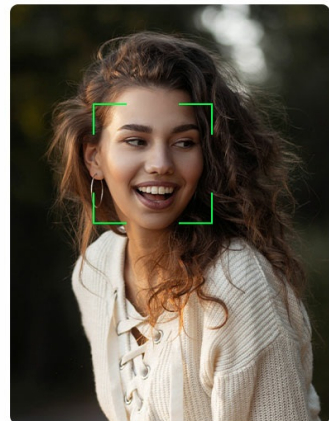
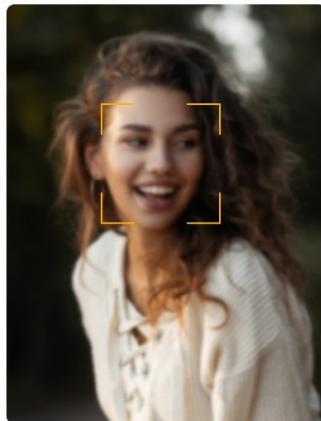


Image: A visual representation of the autofocus function, showing the transition from an unfocused to a focused image.

# 20x

digital zoom



Image: The camera's 20x digital zoom capability, illustrated with a scene of children playing.



Image: A visual demonstration of the camera's 20x digital zoom, showing progressive magnification of a lighthouse.

## 2. Video Recording

The camera supports 4K (2160p) video recording.

1. Switch the camera to video mode using the mode dial or button.
2. Press the shutter button to start recording.
3. Press the shutter button again to stop recording.

# 4KUHD clarity:

4K video recording and 56MP photography are supported.



Image: The camera highlighting its 4K UHD video recording and 56MP photography capabilities.

### 3. Display Screen

The camera features a 2.7-inch LCD screen for convenient viewing of your photos and videos.

- Use the navigation buttons to browse through your captured media.
- Adjust screen brightness in the camera settings if available.

2.7 inch screen makes it easy to view your photos and videos on the camera screen.



Image: The camera's 2.7-inch screen displaying a captured image of sunflowers.

#### 4. Special Features

- **Fill Light:** The built-in fill light can be turned on or off as needed to illuminate subjects in low-light conditions. Refer to the camera's menu for activation.
- **Time Lapse:** Capture sequences of images over time to create time-lapse videos. Settings are available in the camera menu.
- **Slow Motion:** Record videos in slow motion for dramatic effects.
- **Self-Timer:** Set a delay (e.g., 2, 5, or 10 seconds) before a photo is taken, useful for group shots or selfies.
- **Burst Mode:** Capture multiple images in rapid succession by holding down the shutter button. This is ideal for capturing fast-moving subjects.

Video: A short demonstration of capturing motion, illustrating the camera's ability to record dynamic scenes, potentially using burst mode or slow motion.

## Burst Mode

Featuring a burst mode, it's perfect for capturing life's adventures, turning every moment into a potential masterpiece.



Image: An illustration of the camera's burst mode, capturing a series of moments in quick succession.

- **Image Stabilization:** The camera features digital image stabilization to help reduce blur caused by camera shake, resulting in clearer photos and smoother videos.

## Anti-Shake

Help to reduce your hand shake, takes stabler and clearer photos

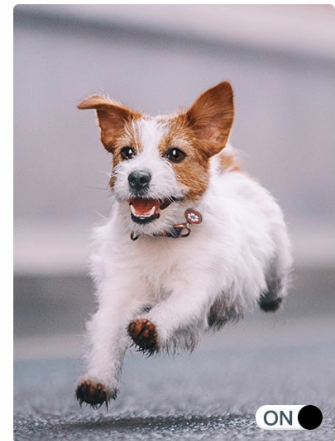
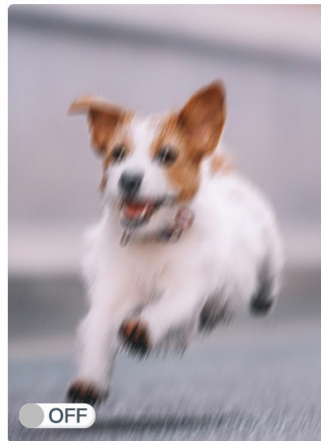


Image: A comparison demonstrating the effectiveness of the anti-shake feature, showing a blurry image versus a clear one.

## 5. Transferring Files

Easily transfer photos and videos from your camera to a computer for storage or sharing.

1. Connect the camera to your computer using the provided USB cable.
2. The camera should appear as a removable drive on your computer.
3. Open the camera's folder to access and copy your files.

# Video image transmission:

USB cable is available to charge the camera directly  
Easily transfer photos and videos from your  
camera to your computer



Image: A visual guide to connecting the camera to a computer via USB for file transfer.



## USB Connection

Use the included data cable not only to charge the camera directly, but also to easily transfer photos and videos from the camera to your computer.

Image: A person demonstrating the USB connection process for transferring files from the camera to a computer.

## MAINTENANCE

---

### 1. Cleaning

- Use a soft, lint-free cloth to clean the camera body and screen.
- For the lens, use a specialized lens cleaning cloth and solution. Avoid touching the lens directly with your fingers.
- Do not use harsh chemicals or abrasive materials, as they can damage the camera's surfaces.

### 2. Storage

- When not in use, store the camera in the provided storage bag to protect it from dust and scratches.
- Store the camera in a cool, dry place, away from direct sunlight and extreme temperatures.
- Remove the battery if the camera will not be used for an extended period to prevent leakage.

## TROUBLESHOOTING

---

If you encounter issues with your camera, refer to the following common solutions:

Problem	Solution
Camera does not power on.	Ensure the battery is fully charged and correctly inserted. Try charging the camera for at least 30 minutes.
Images are blurry.	Ensure autofocus is engaged by lightly pressing the shutter button before fully pressing. Check lighting conditions. Use the anti-shake feature if available.
Cannot transfer files to computer.	Verify the USB cable is securely connected to both the camera and computer. Ensure the camera is in the correct mode for data transfer (check camera settings). Try a different USB port or cable.
Memory card error.	Ensure the SD card is inserted correctly. Check if the card is damaged or full. Try formatting the card (this will erase all data). Ensure the card is compatible (up to 128GB).
Flash not working.	Check flash settings in the camera menu. Ensure the fill light is enabled if desired.

## SPECIFICATIONS

Key technical specifications for the GOWENIC Digital Camera (Model GOWENIC8fderhqtatb-12):

Feature	Detail
Brand	GOWENIC
Model Name	GOWENIC8fderhqtatb-12
Effective Still Resolution	56 MP
Video Resolution	4K (2160p)
Digital Zoom	20x
Screen Size	2.7 Inches (LCD)
Photo Sensor Technology	CMOS
Image Stabilization	Digital
Supported File Formats	JPEG, RAW (for photos), MP4 (for video)
Memory Storage Capacity	Supports up to 128 GB (SD card)
Battery Type	Lithium Ion
Battery Capacity	750 Milliamp Hours
Connectivity Technology	USB
Special Features	Autofocus, Fill Light, Time Lapse, Slow Motion, Self-Timer, Burst Mode
Form Factor	Compact
Skill Level	Novice

## WARRANTY AND SUPPORT

For warranty information or technical support, please refer to the documentation included with your purchase or contact GOWENIC customer service through their official channels. Keep your purchase receipt as proof of purchase for warranty claims.