

RBROHANT RWST81005-*

RBROHANT Exposed Shower System with Tub Spout User Manual

Model: RWST81005-* | Brand: RBROHANT

1. PRODUCT OVERVIEW

The RBROHANT Exposed Shower System is a wall-mounted fixture designed to provide a versatile and comfortable showering experience. This system features a 3-functional shower valve, allowing selection between a rain shower head, a handheld sprayer, and a tub spout. Its adjustable height mechanism caters to various user preferences, ensuring optimal comfort for every family member.

Constructed with durable materials such as brass and stainless steel, and finished in matte black, this shower system combines functionality with modern aesthetics. It is designed for easy installation and maintenance, compatible with standard US 1/2" NPT connections.



Image: The RBROHANT Exposed Shower System installed in a contemporary bathroom setting, showcasing its sleek matte black design and the rain shower in operation.

2. PRODUCT FEATURES

- **3-Functional Shower Valve:** Offers a 10-inch high-pressure rain shower head for full body coverage, a handheld sprayer with a 59-inch hose for targeted washing, and a tub spout for filling bathtubs.
- **Adjustable Shower Height:** Both the rainfall shower head and the hand shower can be adjusted in height to suit individual preferences, providing a customized showering experience.
- **10-inch High Pressure Rain Shower Head:** Features Air-in technology to inject air into the water, creating higher pressure bubble water while saving up to 30% water. The shower head is 360-degree rotatable.
- **Certified Quality:** This exposed shower fixture has passed CEC and cUPC certifications, ensuring safety and durability.
- **Premium Materials:** The 10-inch rain shower head, shower pipe, and 59-inch shower hose are made of

304SUS stainless steel. The shower valve, trim kit, and handheld are brass, with an ABS handheld holder and zinc alloy handles.

- **Easy Installation and Maintenance:** Designed with a standard US 1/2" NPT connection for compatibility with American and Canadian plumbing. The exposed structure simplifies maintenance compared to concealed systems.

3. PACKAGE CONTENTS

Please verify that all components listed below are present in your package before beginning installation. If any parts are missing or damaged, please contact customer support.

- 10 Inch Round Stainless Steel Rain Shower Head
- 3-Way Brass Shower Valve and Handle Trim Kit
- Brass Handheld and Holder
- SUS304 59-Inch Hose
- Brass Tub Spout with High End NEOPERL Aerator
- Height Adjustable Slide Bar Pipe and Shower Arm
- Necessary Tools Kit and Installation Guide



Image: This image displays all the parts you should find in your product package, including the rain shower head, shower pipe, shower valve, handheld sprayer, hose, tub spout, and installation hardware.

4. SPECIFICATIONS

Attribute	Value
Brand	RBROHANT
Model Number	RWST81005-*
Color	Matte Black
Material	Brass, Stainless Steel, Zinc, ABS

Attribute	Value
Finish Type	Painted
Number of Handles	1
Mounting Type	Wall Mount
Item Weight	11.68 pounds
Product Dimensions	35.8 x 16.9 x 4.1 inches
Connection Size	Standard US 1/2" NPT

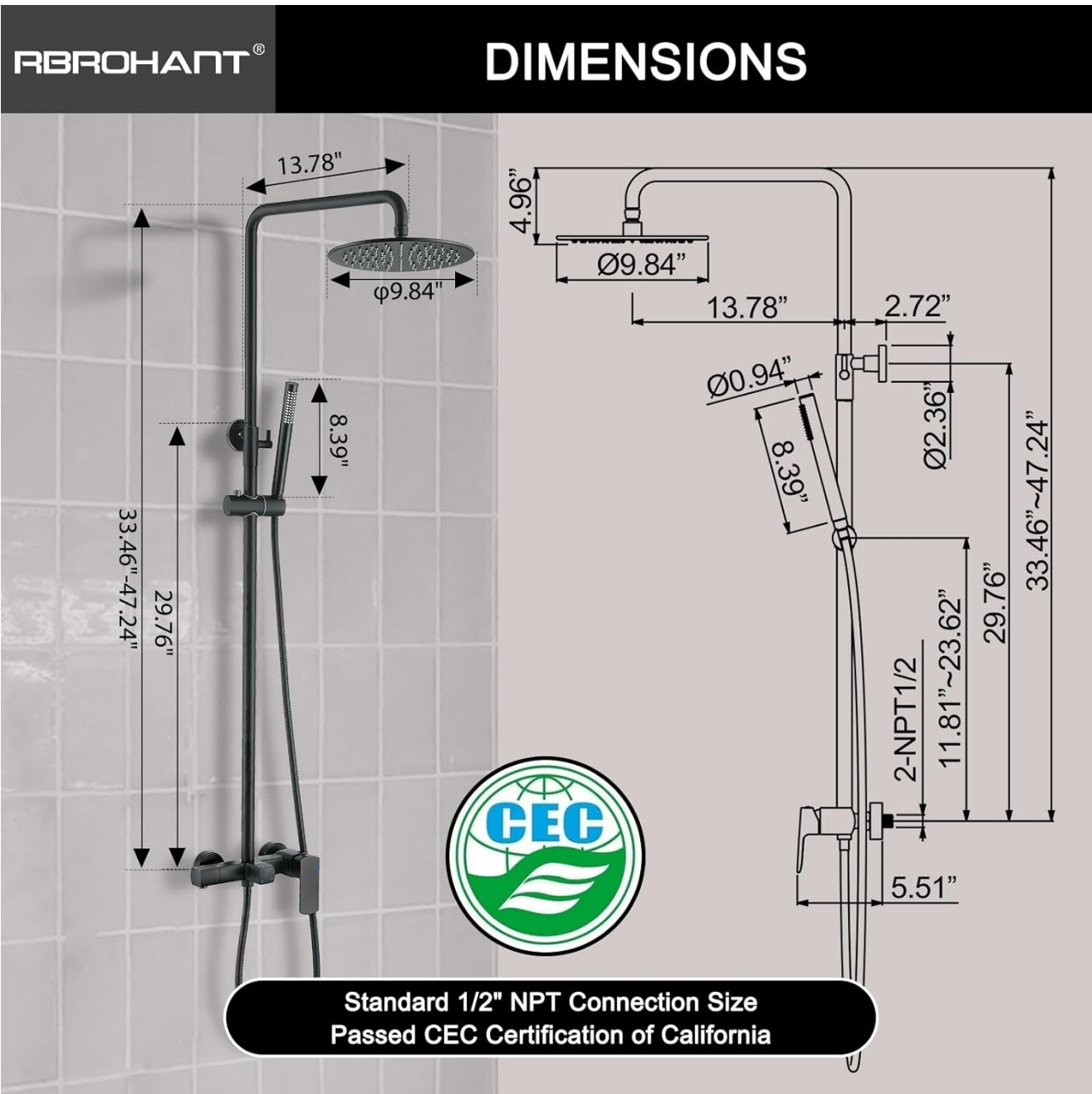


Image: This diagram provides detailed measurements for the shower system, including the adjustable height range for both the rain shower head and the handheld shower.

5. SETUP AND INSTALLATION

The RBROHANT Exposed Shower System is designed for straightforward wall-mounted installation. A detailed installation guide and necessary tools are included in your package to facilitate the process.

Important Installation Tips:

- Ensure the standard US 1/2" NPT connection is compatible with your existing plumbing.
- It is highly recommended to wear gloves during installation to protect the matte black finish from scratches or fingerprints.
- Carefully follow the step-by-step instructions provided in the included installation manual for proper and secure setup.
- Before final tightening, ensure all components are correctly aligned and positioned.



Image: An alternative view of the installed shower system, highlighting its aesthetic integration into a contemporary bathroom design.

6. OPERATING INSTRUCTIONS

This shower system offers three distinct functions for a customized bathing experience.

Function Selection:

The main shower valve allows you to easily switch between the tub spout, handheld shower, and rain shower head. Rotate the diverter knob on the valve to select your desired water outlet.



Image: This image details the operation of the main valve, allowing users to switch between the tub spout, handheld shower, and rain shower functions.

Adjusting Shower Height:

- **Rain Shower Head:** Loosen the adjustment knob on the shower arm, then press down or lift up the shower arm to set the rain shower head to your preferred height. Securely tighten the knob once adjusted.
- **Handheld Shower:** Press and hold the button on the handheld shower holder to slide it up or down the slide bar. Release the button to lock it in place at the desired height.



Image: This image demonstrates how to adjust the height of both the main rain shower head and the handheld shower for personalized comfort.

Tub Spout Operation:

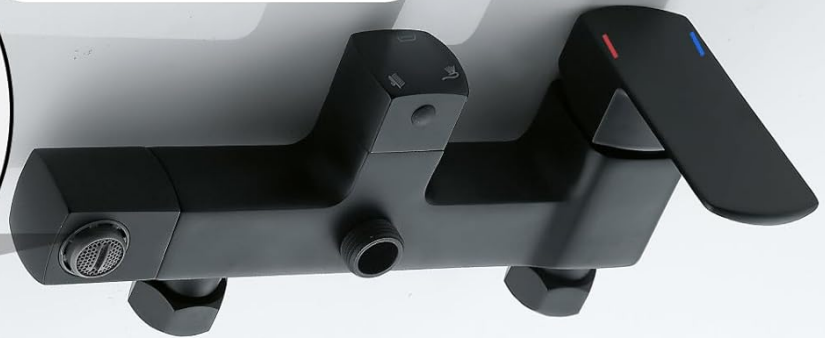
The tub spout features an adjustable flow angle and a high-end NEOPERL aerator, ensuring a gentle and quiet water flow while filling your tub efficiently.

RBROHANT®

Adjustable Tub Spout Flow Angle



High-end aerator makes the flow more gentle and quiet.



More flexible angle to different filling needs.
Larger water flow, fills up your tub more quickly.



Image: This image highlights the flexible tub spout, which can be adjusted for different filling needs, and mentions the aerator for gentle water flow.

Rain Shower Head Features:

The 10-inch rain shower head utilizes Air-in technology for a powerful yet water-saving shower. Its soft silicone nozzles are designed for easy cleaning; simply rub them with your finger to remove any mineral buildup.

RBROHANT®

10 Inch High Pressure Rain Shower Head



Made from long lasting SUS304 stainless steel, adopts air-in technology, higher pressure and less water.



Soft silicon nozzles, easy to clean, just rub it with your finger to remove the scale.

Image: This image focuses on the rain shower head, explaining its 360-degree rotation and the easy-to-clean silicone nozzles.



Image: A close-up view of the 10-inch rain shower head delivering a consistent and full spray, demonstrating its performance.

7. MAINTENANCE

Regular cleaning and proper care will ensure the longevity and optimal performance of your RBROHANT Exposed Shower System.

General Cleaning:

- Clean the matte black finish regularly with a soft, damp cloth and mild soap. Avoid abrasive cleaners, harsh chemicals, or scouring pads, as these can damage the finish.
- Wipe the surface dry immediately after cleaning to prevent water spots.

Nozzle Maintenance:

- The rain shower head features soft silicone nozzles. To remove mineral buildup or limescale, simply rub the nozzles with your finger. This helps maintain consistent water flow.

Advantages of Exposed Structure:

The exposed design of this shower system makes it inherently easier to access and maintain compared to concealed shower systems, simplifying any necessary cleaning or adjustments.

8. TROUBLESHOOTING

While the RBROHANT Exposed Shower System is designed for reliability, minor issues may occasionally arise. Here are some general troubleshooting tips:

- **Low Water Pressure:** Check if the main water supply is fully open. Ensure the shower head nozzles are clear of debris by rubbing the silicone tips.
- **Leaking:** Verify that all connections are securely tightened. If leaks persist from the valve or connections, professional assistance may be required.
- **Difficulty Adjusting Height:** Ensure the adjustment knobs or buttons are fully loosened before attempting to slide components. Clean any debris that might obstruct movement.
- **Water Temperature Issues:** Confirm that both hot and cold water supplies are connected correctly to the valve.

For persistent issues not resolved by these steps, please refer to the Warranty & Support section for contact information.

9. WARRANTY AND SUPPORT

RBROHANT is committed to customer satisfaction and stands behind the quality of its products.

Lifetime Warranty:

RBROHANT offers a lifetime warranty for all its shower fixtures. This warranty covers defects in material and workmanship under normal use and service.

Customer Support:

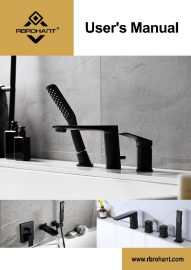

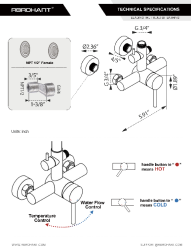
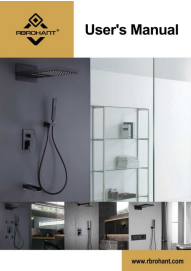

If you encounter any problems with your RBROHANT Exposed Shower System, please do not hesitate to contact our customer service team. We are dedicated to providing prompt assistance and will reply to inquiries within 24 hours.

- **Free Replacement Parts:** If necessary, free new replacement parts will be sent to resolve any issues covered under warranty.
- **Contact Information:** Please refer to the contact details provided in your product packaging or on the official RBROHANT website for direct support.



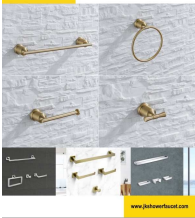
Image: This image summarizes the customer-oriented services offered by RBROHANT, including a lifetime warranty and responsive support.

Related Documents - RWST81005-*

 <p>User's Manual</p>	<p>RBROHANT RB0746 Bathtub Faucet Installation and User Manual</p> <p>Comprehensive installation guide and user manual for the RBROHANT RB0746 matte black bathtub faucet with handheld shower. Includes parts list, installation steps, cleaning instructions, and technical specifications.</p>
	<p>RBROHANT RB0746 Matte Black Roman Tub Faucet with Handshower User Manual and Installation Guide</p> <p>Detailed user manual and installation guide for the RBROHANT RB0746 matte black Roman tub faucet with handshower. Includes troubleshooting, lifetime warranty information, and product specifications.</p>
	<p>RBROHANT JK0145 Shower Mixer Technical Specifications</p> <p>Detailed technical specifications for the RBROHANT JK0145 shower mixer, including dimensions, connection types (NPT, G3/4), and control functions for hot and cold water.</p>
 <p>User's Manual</p>	<p>RBROHANT Arletto RB0945 Shower System Installation Manual</p> <p>Installation and user guide for the RBROHANT Arletto RB0945 shower system. Includes parts list, step-by-step installation instructions, dimensions, and cleaning recommendations.</p>
 <p>User's Manual</p>	<p>RBROHANT RB1184 Kitchen Faucet Installation Manual</p> <p>Detailed installation manual and user guide for the RBROHANT RB1184 kitchen faucet, covering setup, dimensions, and maintenance. Features step-by-step instructions and care tips.</p>



User's Manual



[RBROHANT Bathroom Accessories User Manual and Installation Guide](#)

Comprehensive user manual and installation guide for RBROHANT bathroom accessories, including installation steps, cleaning care instructions, and product specifications. Features model RB0859 and IAPMO certifications.