

## CINPUSEN CG-01

# CINPUSEN CG-01 Wireless Gaming Headset User Manual

Model: CG-01 | Brand: CINPUSEN

### PRODUCT OVERVIEW

The CINPUSEN CG-01 is a versatile 2.4Ghz wireless gaming headset designed for an immersive audio experience across multiple platforms. It features a noise-cancelling microphone, long battery life, and multiple connectivity options including 2.4GHz wireless, Bluetooth 5.4, and 3.5mm wired connections. Its ergonomic design ensures comfort during extended gaming sessions.



Image: The CG-01 wireless gaming headset in its distinctive red and blue color scheme, accompanied by its USB-C wireless dongle.

## WHAT'S IN THE BOX

---

Upon unboxing your CINPUSEN CG-01 headset, please ensure all the following components are present:

- 1 x CG-01 Gaming Headset
- 1 x USB-B Adapter
- 1 x Type-C Transmitter (Dongle)
- 1 x Type-C Charging Cable
- 1 x 3.5mm Audio Cable
- 1 x User Manual (this document)

## SETUP GUIDE

---

Follow these steps to set up your CG-01 headset for the first time:

1. **Initial Charge:** Before first use, fully charge the headset using the provided Type-C charging cable. Connect the cable to the headset's USB-C charging port and a compatible USB power source. The charging indicator light will provide status.
2. **Power On:** Press and hold the Power button on the headset for 3 seconds until the indicator light illuminates, indicating the headset is powered on.
3. **Select Connection Method:** The CG-01 supports multiple connection types. Choose the method suitable for your device:

- **2.4GHz Wireless (Recommended for Gaming):**

For Nintendo Switch, PS5, PS4, PC, Mac, Laptop: Insert the Type-C transmitter (dongle) directly into your device's USB-C port. If your device only has a USB-A port, use the included USB-B adapter with the Type-C transmitter. The headset will automatically pair with the dongle. A stable connection is indicated by a solid light on the dongle and headset.

# BORN FOR NINTENDO SWITCH

The USB-C dongle seamlessly connects to  
Switch Console, the USB-C to USB-A adapter works  
with Nintendo Switch Docking Station

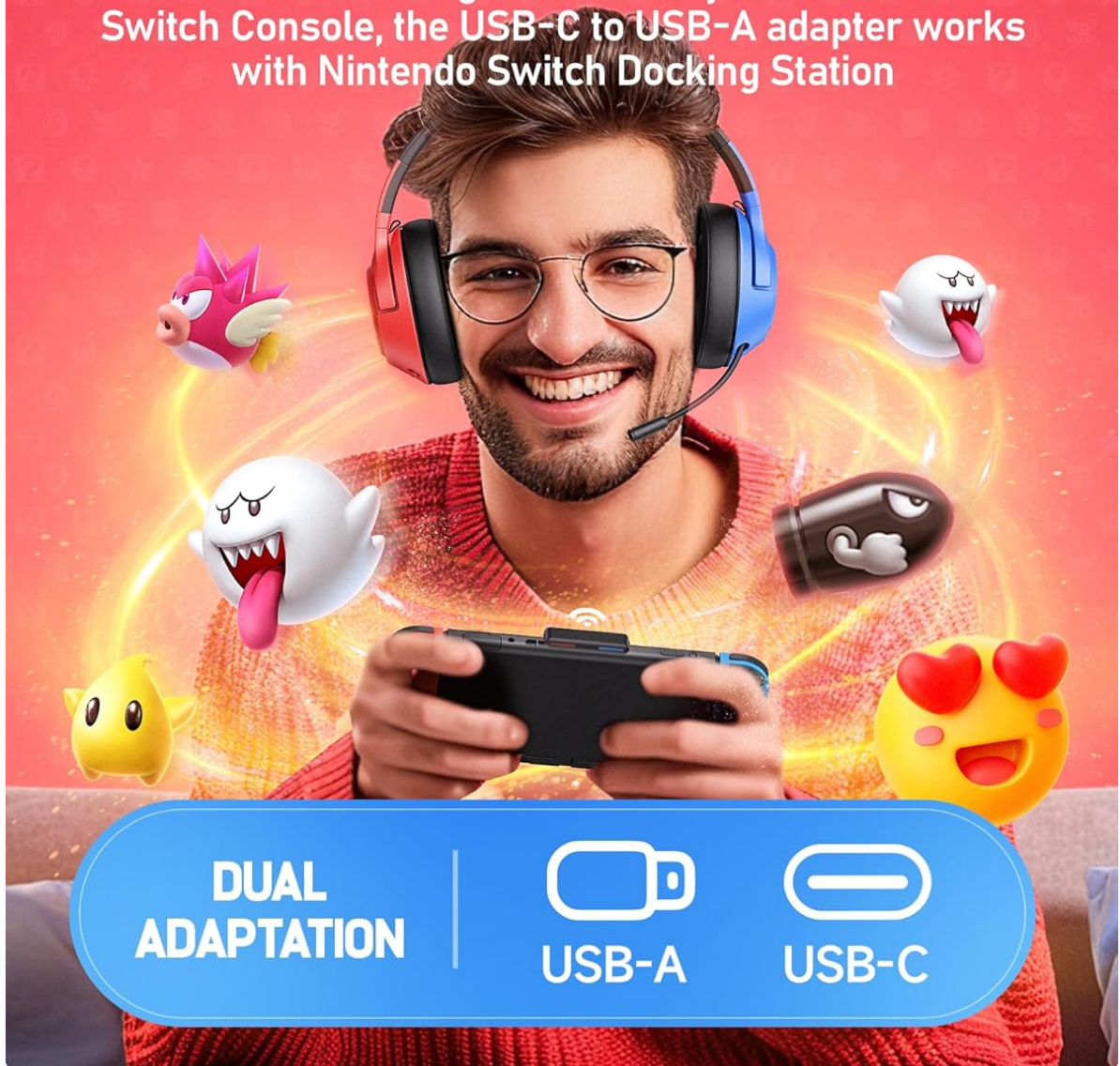


Image: A user wearing the CG-01 headset while playing on a Nintendo Switch, demonstrating the headset's compatibility and ease of use with the console.

# 2.4GHZ WIRELESS CONNECTION

Upgraded 2.4GHz technology provides a reliable connection to ensure your gaming is smooth

⇒ 20MS  
TRANSMISSION

⇒ 15M  
CONNECTION RANGE



Image: The CG-01 headset positioned near a Nintendo Switch console and its docking station, illustrating the 2.4GHz wireless connection setup for gaming.

- **Bluetooth 5.4:**

For Phones, Tablets, Laptops: Press the 'M' button on the headset for 3 seconds to switch to Bluetooth mode. The headset will enter pairing mode (indicator light will flash). On your device, search for "CG-01" in the Bluetooth settings and select to connect.

- **3.5mm Wired Mode:**

For any device with a 3.5mm audio jack: Connect one end of the included 3.5mm audio cable to the headset's 3.5mm port and the other end to your device's audio jack. This mode does not require battery power.

## OPERATING INSTRUCTIONS

---

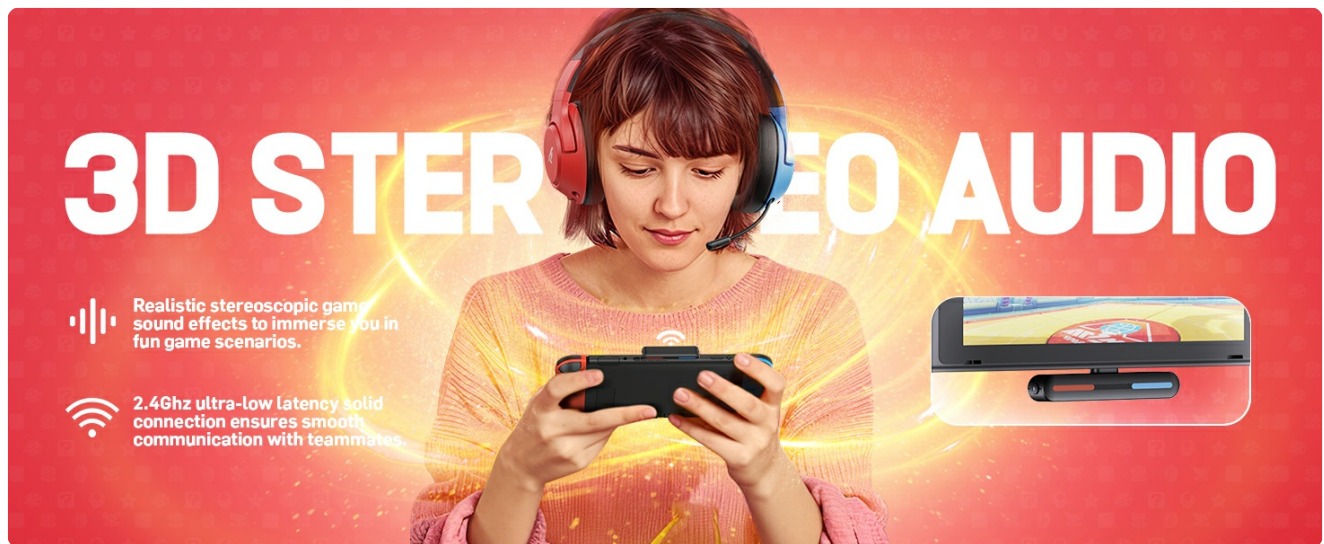


Image: A detailed diagram highlighting the various control buttons and ports on the CG-01 headset, including volume, mute, power, charging, and audio interface.

- **Volume Control:** Use the scroll wheel (1) to adjust the audio volume up or down.
- **Mic Mute Button:** Press the 'M' button (2) to quickly mute or unmute the microphone. The microphone will have an indicator light to show its status.
- **Power Button / Multi-function Button:**
  - Press and hold for 3 seconds to Power On/Off the headset.
  - Short press to Play/Pause audio (in Bluetooth mode).
  - Double press to skip to the Next Track (in Bluetooth mode).
  - Press and hold for 3 seconds to switch between 2.4GHz and Bluetooth modes.
- **USB-C Charging Port:** (4) For charging the headset.
- **3.5mm Audio Interface:** (5) For wired connection.

## Microphone Usage

The CG-01 features a telescopic noise-cancelling microphone. To use, gently pull the microphone out from the left earcup. To retract, push it back in until it is flush with the earcup. Ensure the microphone is fully extended for optimal voice pickup.

# TELESCOPIC NOISE CANCELLING MIC

ENC noise reduction and M-key mute bring you clear and convenient game communication



Image: A detailed view of the CG-01 headset's telescopic microphone, illustrating its retractable design for convenience and noise-cancelling capabilities.

## CONNECTIVITY

The CG-01 headset offers versatile connectivity options to suit various gaming and audio needs:

- **2.4GHz Wireless:** Provides a low-latency, stable connection ideal for gaming on Nintendo Switch, PlayStation consoles (PS5, PS4, PS4 Pro, PS4 Slim), PC, Mac, and Laptops. The included Type-C transmitter and USB-A adapter ensure broad compatibility.

- **Bluetooth 5.4:** For wireless connection to mobile devices such as Phones, Tablets, and Laptops. Offers a stable and efficient connection for music listening and voice calls.
- **3.5mm Wired:** A universal wired connection compatible with virtually any device featuring a 3.5mm audio jack. This mode operates without battery power.

# QUADRUPLE CONNECTION MODES

Compatible with multiple platforms and devices

## TYPE-C DONGLE



## TYPE-C TO TYPE-A



## BLUETOOTH 5.4



## WIRED MODE

**ALL DEVICE WITH  
3.5MM AUDIO JACK**



Image: An infographic detailing the four primary connection methods supported by the CG-01 headset, including 2.4GHz wireless via Type-C dongle, USB-A adapter, Bluetooth 5.4, and 3.5mm wired connection.

## AUDIO FEATURES

The CG-01 headset is engineered to deliver high-quality audio for an immersive experience:

- **40mm Dynamic Drivers:** Equipped with 40mm drivers, the headset produces rich, high-definition audio, bringing out every detail in your games, music, and movies.
- **Low Latency (2.4GHz):** Experience audio-action synchronization with a latency as low as 20ms in 2.4GHz wireless mode, providing a competitive edge in fast-paced games.
- **Sound Isolation:** The over-ear design with soft ear cushions provides effective sound isolation, allowing you to focus on your audio without external distractions.



Image: A visual representation of the 40mm dynamic drivers and ear cushions, illustrating the components responsible for the headset's audio quality and comfort.

## COMFORT AND DESIGN

The CG-01 headset is designed for ultimate comfort during prolonged use:

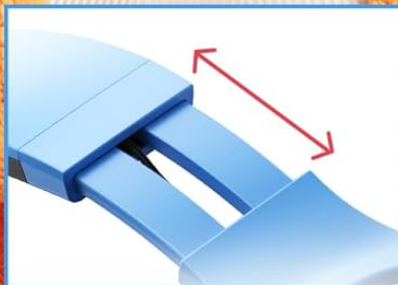
- **Lightweight Build:** Weighing approximately 235g (8.3 ounces), the headset minimizes pressure on your head and ears, allowing for extended gaming sessions without fatigue.
- **Ergonomic Design:** Features soft memory foam ear pads covered with breathable fabric, adapting to various ear shapes for a custom, comfortable fit.
- **Adjustable Headband:** The headband is adjustable to accommodate different head sizes, ensuring a secure and comfortable fit for kids, teens, and adults.
- **Foldable Body:** The headset can be folded for compact storage and portability.

# ALL-DAY COMFORTABLE

Lightweight 235g body makes you more relaxed in the game



**FOLDABLE  
BODY**



**ADJUSTABLE  
HEADBAND**



**ADJUSTABLE  
ANGLE**

Image: Visual representations of the CG-01 headset's design features, including its foldable body for portability, adjustable headband for various head sizes, and adjustable ear cup angles for personalized comfort.

## BATTERY AND CHARGING

The CG-01 headset is equipped with a high-capacity battery for extended use:

- **Battery Life:** Enjoy up to 40 hours of gaming time in 2.4GHz wireless mode or up to 80 hours of music playback in Bluetooth mode on a single charge.
- **Charging:** Use the provided Type-C charging cable to recharge the headset. A full charge typically takes

approximately 2 hours.

- **Low Battery Indicator:** The headset will provide an audible or visual alert when the battery level is low, prompting you to recharge.

# 1000mAh LARGE CAPACITY

Worry-free battery life with an extended 40H of 2.4Ghz gaming time and 80H of bluetooth music playback

Image: The CG-01 headset displayed alongside a large battery icon, emphasizing its 1000mAh large capacity for extended usage.

SPECIFICATIONS

Feature	Detail
---------	--------

Model Name	CG-01
Connectivity Technology	2.4GHz Wireless, Bluetooth 5.4, 3.5mm Wired
Wireless Range	Up to 15 meters (2.4GHz)
Audio Latency	20 Milliseconds (2.4GHz)
Audio Driver Size	40 Millimeters
Battery Capacity	1000mAh
Battery Life (Gaming)	Up to 40 hours (2.4GHz)
Battery Life (Music Playback)	Up to 80 hours (Bluetooth)
Charging Time	Approx. 2 hours
Microphone	Telescopic Noise-Cancelling
Weight	Approx. 235g (8.3 ounces)
Materials	Soft Memory Sponge Cushions, PC, Leather, ABS
Compatible Devices	Nintendo Switch, PS5, PS4, PC, Mac, Laptop, Phone, Tablet, etc.

## TROUBLESHOOTING

---

If you encounter any issues with your CG-01 headset, please refer to the following common solutions:

- **No Sound / Low Volume:**
  - Ensure the headset is powered on and fully charged.
  - Check the volume control wheel on the headset and your device's volume settings.
  - For 2.4GHz wireless: Ensure the Type-C transmitter is securely plugged into your device and the headset is paired. Try re-inserting the dongle.
  - For Bluetooth: Ensure the headset is correctly paired and connected in your device's Bluetooth settings. Try unpairing and re-pairing.
  - For 3.5mm wired: Ensure the cable is fully inserted into both the headset and your device.
  - Verify that the correct audio output device is selected in your computer's sound settings.
- **Microphone Not Working:**
  - Ensure the microphone is fully extended from the earcup.
  - Press the 'M' button on the headset to ensure the microphone is not muted. Check the microphone's indicator light.
  - Verify that the correct microphone input device is selected in your device's sound or communication settings.
  - Note: Microphone functionality may be limited or unavailable in Bluetooth mode on some devices. For optimal microphone performance, use the 2.4GHz wireless connection.
  - Test the microphone with another application or device to isolate the issue.
- **Connection Issues (Wireless):**
  - Ensure the headset is within the 15-meter wireless range of the transmitter/device.

- Avoid strong electromagnetic interference from other wireless devices.
- If using 2.4GHz, try unplugging and re-plugging the Type-C transmitter.
- If using Bluetooth, try restarting both the headset and your device.

- **Headset Not Charging:**

- Ensure the Type-C charging cable is securely connected to both the headset and a working power source.
- Try a different USB port or power adapter.
- Check the charging cable for any damage.

For further assistance, please refer to the official [Troubleshooting Guide \(PDF\)](#) or contact CINPUSEN customer support.

## MAINTENANCE

---

To ensure the longevity and optimal performance of your CG-01 headset, follow these maintenance guidelines:

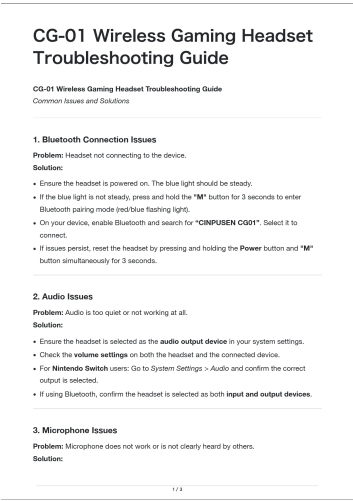
- **Cleaning:** Use a soft, dry cloth to clean the headset. Do not use abrasive cleaners, alcohol, or solvents. For ear cushions, a slightly damp cloth can be used, but ensure they are completely dry before use.
- **Storage:** When not in use, store the headset in a cool, dry place away from direct sunlight and extreme temperatures. Utilize its foldable design for compact and safe storage.
- **Battery Care:** Avoid fully discharging the battery frequently. For long-term storage, charge the headset to about 50% to preserve battery health.
- **Handle with Care:** Avoid dropping the headset or subjecting it to strong impacts. Do not pull on cables excessively.

## WARRANTY AND SUPPORT

---

CINPUSEN products are designed for reliability and performance. For detailed warranty information, please refer to the warranty card included with your purchase or visit the official CINPUSEN website.

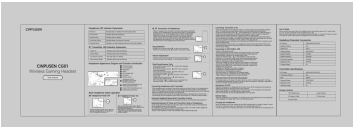
For technical support, troubleshooting, or any inquiries regarding your CG-01 headset, please contact CINPUSEN customer service through their official channels. You may also find additional resources, including the full [User Manual \(PDF\)](#), on the product's support page.



[CG-01 Wireless Gaming Headset Troubleshooting Guide](#)

Troubleshooting guide for the CG-01 Wireless Gaming Headset, covering common issues like Bluetooth connection problems, audio issues, microphone problems, charging issues, wireless interference, mode switching, and physical damage.

lang:en score:38 filesize: 85.23 K page\_count: 3 document date: 2025-07-25



[CINPUSEN CG01 Wireless Gaming Headset User Manual](#)

User manual for the CINPUSEN CG01 Wireless Gaming Headset, detailing setup, operation, LED indicators, and specifications for PC, PS4, PS5, and other devices.

lang:en score:18 filesize: 3.99 M page\_count: 1 document date: 2025-07-25