



Manuals.plus /

› iDOO /

› iDOO High-Speed Hair Dryer User Manual (Model I-G-04)

iDOO I-G-04

iDOO High-Speed Hair Dryer User Manual

MODEL: I-G-04

1. Important Safety Information

Please read all instructions carefully before using the iDOO High-Speed Hair Dryer. Keep this manual for future reference.

- **WARNING:** The air outlet and attachments may become hot during use. Avoid direct contact with hands to prevent burns.
- **WARNING:** Do not use this device near bathtubs, showers, basins, or other vessels containing water.
- **WARNING:** The concentrator and diffuser accessories contain magnets. To reduce the risk of fire, shock, or injury, keep them away from pacemakers, defibrillators, credit cards, and electronic storage devices.
- Ensure the ALCI Safety Plug is functioning correctly before each use. Press the 'TEST' button, then the 'RESET' button. If it does not reset, do not use the device.
- Keep your hair at least 1.2 meters away from the air outlet during operation.

2. Product Overview

The iDOO High-Speed Hair Dryer is designed for efficient and gentle hair drying, featuring advanced technology for optimal hair health and styling.



Figure 2.1: iDOO High-Speed Hair Dryer and included accessories.

Included Components:

- Hair Dryer Unit
- Smoothing Nozzle (Magnetic)
- Adjustable Diffuser (Magnetic)
- Velvet Storage Bag
- User Manual

Key Features:

- **110,000 RPM High-Speed Brushless Motor:** Delivers powerful airflow for faster drying.
- **200 Million Negative Ions:** Helps to lock in moisture, reduce frizz, and enhance hair smoothness and shine.
- **Smart Thermo-Control:** Monitors heat 100 times per second to prevent heat damage and maintain precise temperature.
- **Hot & Cold Air Cycle Mode:** Alternates between hot and cold air to dry hair quickly while minimizing heat

exposure.

- **Low Noise Operation:** Designed for a quieter styling experience.
- **Portable Design:** Lightweight and comes with a velvet carry pouch for convenient storage and travel.

3. Setup and Assembly

The iDOO Hair Dryer is designed for quick and easy setup.

3.1 Attaching Nozzles:

The smoothing nozzle and diffuser attach magnetically to the front of the hair dryer. Simply align the accessory with the air outlet and it will snap into place.

Significantly Reduces Noise



Pet friendly



The quiet
choice 58dB

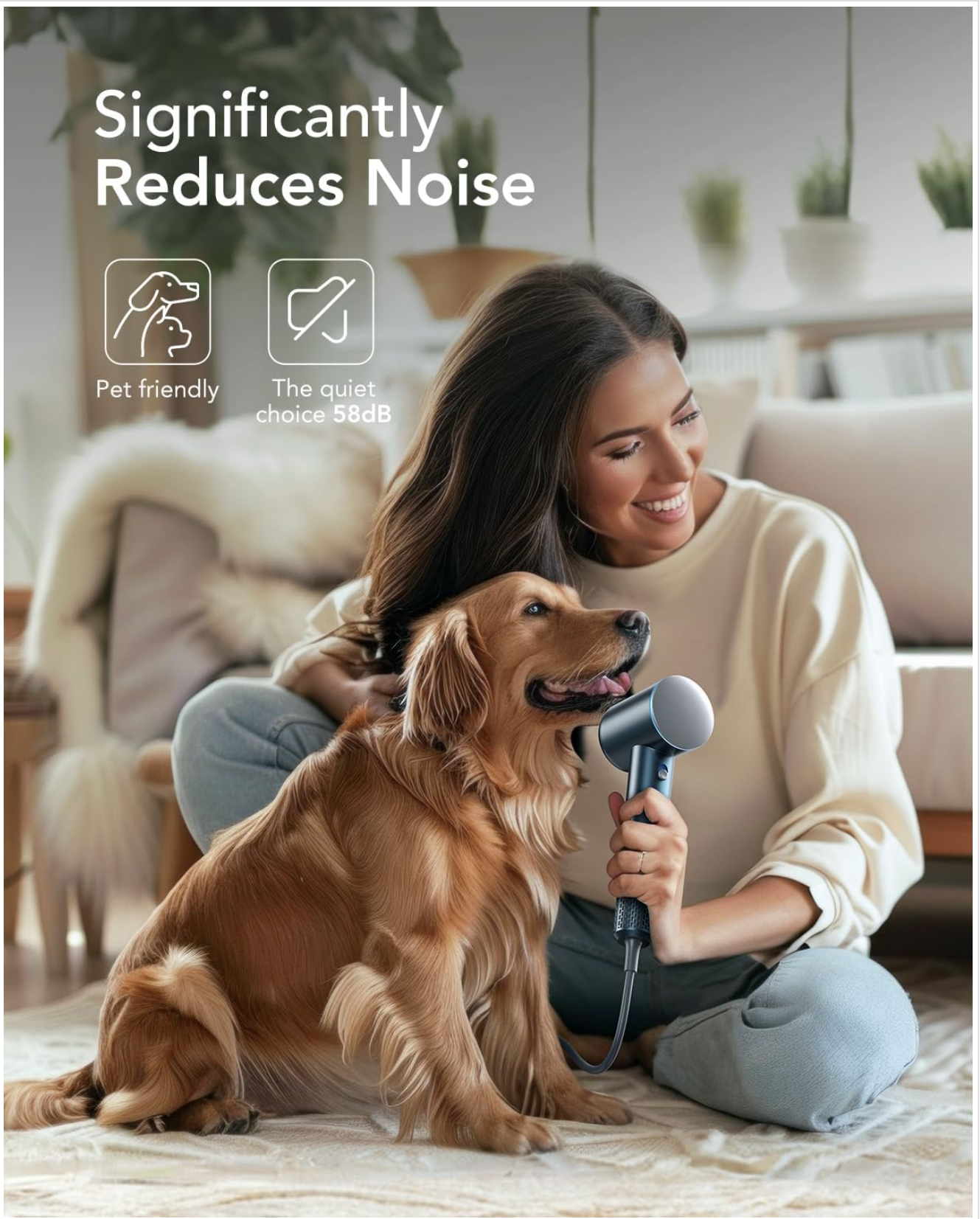


Figure 3.1: Magnetic attachment of the diffuser.

- **Smoothing Nozzle:** Ideal for all hair types, providing concentrated airflow for smooth, sleek styles.
- **Adjustable Diffuser:** Best for curly, wavy, or textured hair, distributing air evenly to enhance natural curls and reduce frizz.

4. Operating Instructions

Familiarize yourself with the controls for optimal performance.

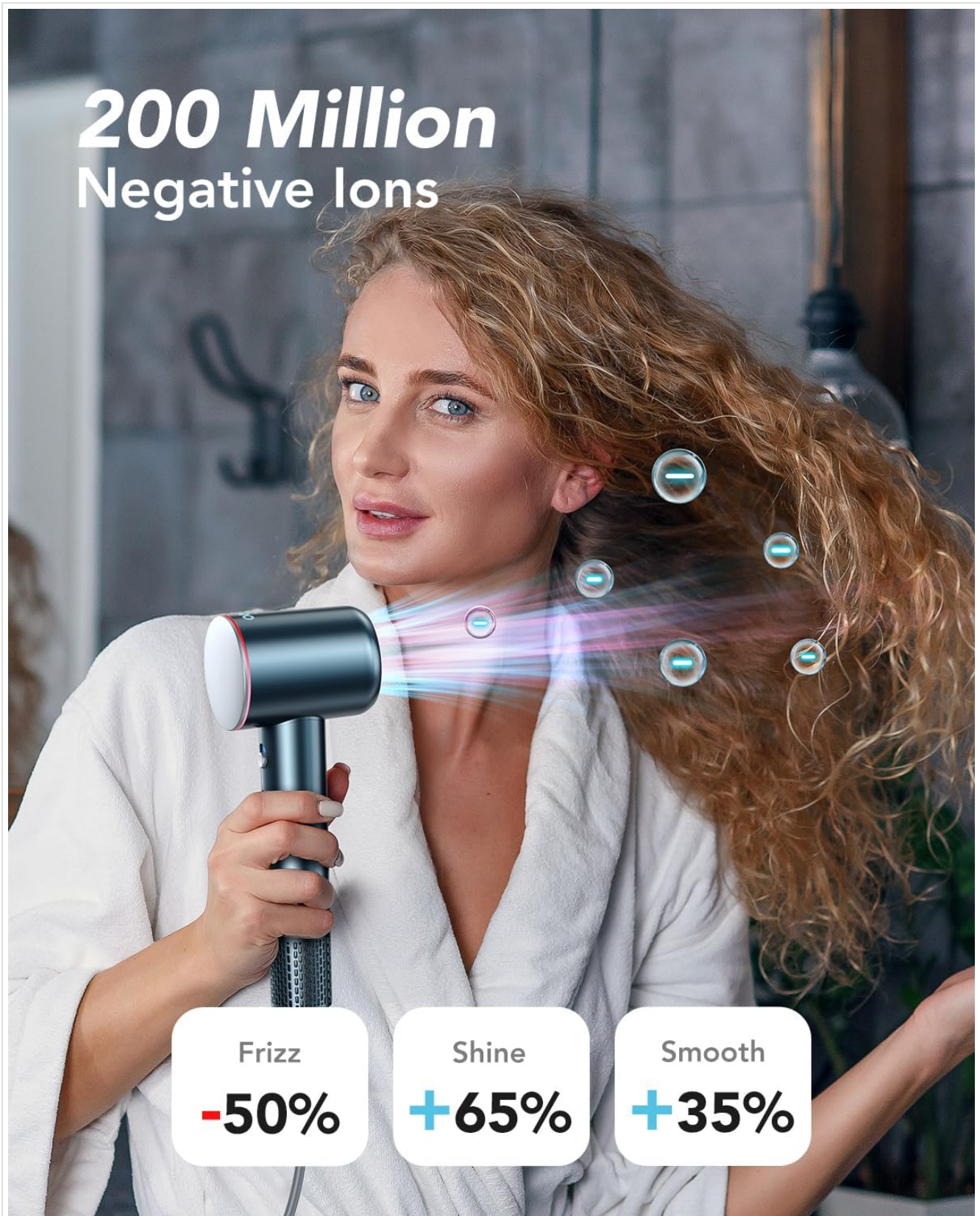


Figure 4.1: Power and Temperature Controls.

4.1 Power On/Off and Speed Settings:

1. **Power On/Off:** Slide the power switch (top button) up or down to turn the hair dryer on or off.
2. **Speed Selection:** The power switch also controls the fan speed. Slide it to the first position for Low speed and to the second position for High speed.

4.2 Temperature Settings:

The iDOO Hair Dryer offers 4 temperature settings:

- **Cool Air (77°F / 25°C):** Indicated by a blue light. Ideal for setting your style.
- **Warm Air (122°F / 50°C):** Indicated by an orange light. For gentle drying.
- **Hot Air (176°F / 80°C):** Indicated by a red light. For fast drying.
- **Circulation Mode (Hot & Cold Alternating):** Indicated by alternating red and blue lights. Hold the temperature button for 2 seconds to activate this mode. This helps to dry hair quickly while minimizing heat damage. Press again to exit.

The hair dryer features a memory function that resumes the last used setting upon restart.

4.3 General Usage Tips:

- For best results, towel-dry your hair to remove excess water before blow-drying.
- Use the appropriate nozzle for your desired style.
- Keep the hair dryer moving to prevent concentrating heat on one area.
- Finish with a cool shot to seal the hair cuticle and add shine.

5. Maintenance and Care

Regular maintenance ensures the longevity and optimal performance of your hair dryer.

5.1 Cleaning the Filter Mesh:

The iDOO Hair Dryer features a detachable filter mesh at the base of the handle for easy cleaning.



Safety Plug

Built in overheat protection

**Detachable
Filter Mesh**
Make cleaning easier



**Come with a
velvet storage bag**

Figure 5.1: Detachable Filter Mesh.

1. Ensure the hair dryer is unplugged and completely cool before cleaning.
2. Gently twist or pull the filter mesh cover at the bottom of the handle to remove it.
3. Use a soft brush or cloth to remove any dust, lint, or hair accumulated on the mesh.
4. Reattach the filter mesh cover by aligning it and twisting/pushing until it clicks securely into place.

Clean the filter regularly to maintain strong airflow and prevent overheating.

6. Troubleshooting

If you encounter issues with your iDOO Hair Dryer, refer to the following common solutions:

Problem	Possible Cause	Solution
Hair dryer does not turn on.	No power supply; ALCI safety plug tripped.	Ensure the plug is fully inserted into a working outlet. Press the 'RESET' button on the ALCI safety plug. If it trips repeatedly, discontinue use and contact support.
Airflow is weak or inconsistent.	Blocked air intake filter.	Unplug the device and clean the detachable filter mesh as described in Section 5.1.
Device overheats and shuts off.	Blocked air intake/outlet; prolonged use.	Unplug and allow the device to cool down. Clean the filter mesh. Ensure air vents are not obstructed during use.

7. Specifications

Feature	Detail
Model Name	I-G-04
Product Dimensions	3.5 x 2.75 x 10 inches
Item Weight	2.8 Pounds
Wattage	1500 watts
Power Source	Corded Electric
Voltage	110 Volts
Number of Speeds	2
Number of Settings	6 (including Circulation Mode)
Maximum Temperature	176 Degrees Fahrenheit
Hair Type Compatibility	All, Curly, Dry, Normal, Straight, Thick, Thin, Wavy
Safety Features	ALCI Safety Plug, UL, FCC sDOC certifications

8. Warranty and Support

iDOO stands behind the quality of its products.

8.1 Warranty Information:

- **1-Year Replacement:** For manufacturing defects.

- **2-Year Warranty:** Covers defects in materials and workmanship.
- **30-Day Return:** For customer satisfaction.

8.2 Customer Support:

For any questions, concerns, or warranty claims, please contact the seller, MecTech, through your Amazon account. Navigate to 'Account' > 'Orders' > 'Order Detail' and select 'Ask a question' next to the seller's name.

9. Product Videos

Watch these official videos for a visual guide on the iDOO High-Speed Hair Dryer's features and usage.

Your browser does not support the video tag.

Video 9.1: Demonstrates the 110,000 RPM high-speed motor and powerful airflow of the iDOO Hair Dryer.

Your browser does not support the video tag.

Video 9.2: Explains key features and benefits of the iDOO Hair Dryer, including its design and technology.

Your browser does not support the video tag.

Video 9.3: Showcases the iDOO Hair Dryer with its diffuser attachment in use.