

[Manuals.plus](#) /

> [JBL](#) /

> JBL Tune 670NC Wireless On-Ear Headphones User Manual

JBL JBL Tune 670NC

JBL Tune 670NC Wireless On-Ear Headphones User Manual

Model: JBL Tune 670NC | Brand: JBL

INTRODUCTION

This manual provides comprehensive instructions for the operation, maintenance, and troubleshooting of your JBL Tune 670NC Wireless On-Ear Headphones. These headphones feature Adaptive Noise Cancelling with Smart Ambient technology, JBL Pure Bass Sound, and a long battery life, designed for comfortable and versatile listening.



The JBL Tune 670NC Wireless On-Ear Headphones in white, showcasing their sleek design and on-ear form factor.

WHAT'S IN THE BOX

Upon unboxing your JBL Tune 670NC headphones, please verify that all the following components are included:

- JBL Tune 670NC Headphones
- Charging Cable
- User Manual (this document)

SETUP

1. Charging the Headphones

Before initial use, fully charge your JBL Tune 670NC headphones. Connect the provided charging cable to the charging port on the headphones and to a compatible USB power source. A full charge typically takes approximately 2 hours. The LED indicator on the headphones will show the charging status and turn off or change color once fully charged.

UP TO 70H BATTERY WITH SPEED CHARGE



The JBL Tune 670NC headphones are designed for extended use, offering up to 70 hours of battery life on a single charge, with speed charge capability for quick power-ups.

2. Bluetooth Pairing

To connect your headphones to a device:

1. Ensure the headphones are powered off.
2. Press and hold the power button on the headphones until the LED indicator flashes blue, indicating pairing mode.
3. On your device (smartphone, laptop, etc.), enable Bluetooth and search for available devices.
4. Select "JBL Tune 670NC" from the list of discovered devices.
5. Once connected, the LED indicator will turn solid blue.

The headphones support Bluetooth 5.3 for stable and efficient wireless connectivity. They also feature Multipoint Pairing,

allowing connection to two Bluetooth devices simultaneously, enabling seamless switching between them.

3. JBL Headphones App

For an enhanced listening experience, download the free JBL Headphones App. This application allows you to customize sound settings, activate pre-set EQ modes, adjust the EQ curve, and manage features like Adaptive Noise Cancelling and Smart Ambient.

OPERATING INSTRUCTIONS

Adaptive Noise Cancelling and Smart Ambient

The JBL Tune 670NC headphones offer advanced noise control features:

- **Adaptive Noise Cancelling (ANC):** This feature minimizes external distractions, providing a focused listening environment. Activate ANC for immersive audio.
- **Ambient Aware:** Allows you to hear your surroundings while still enjoying your audio. Useful for awareness in busy environments.
- **TalkThru:** Lowers music volume and amplifies speech, enabling quick conversations without removing your headphones.

These modes can be activated and managed through the JBL Headphones App or via the control buttons on the ear-cup.

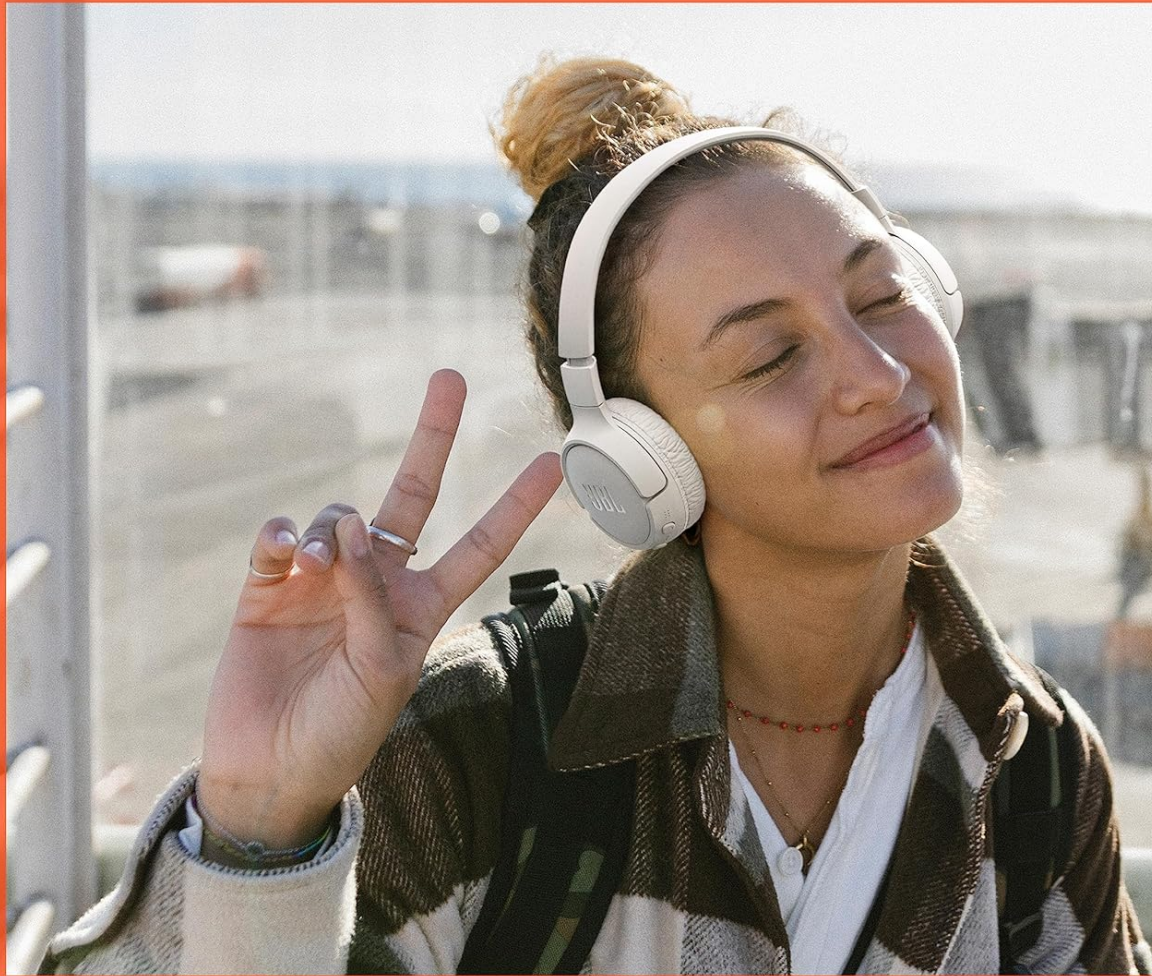


ADAPTIVE NOISE CANCELLING AND SMART AMBIENT

Experience tranquility with Adaptive Noise Cancelling or stay aware of your surroundings with Smart Ambient technology, ideal for various environments.

JBL Pure Bass Sound

These headphones deliver the signature JBL Pure Bass Sound, providing a rich and powerful audio experience. The sound profile can be further customized using the JBL Headphones App to match your preferences.



JBL PURE BASS SOUND

Enjoy the deep, powerful audio characteristic of JBL Pure Bass Sound, designed to enhance your music listening.

Hands-free Calls with VoiceAware

Manage your calls effortlessly with the integrated microphone and VoiceAware technology. The convenient buttons on the ear-cup allow you to answer, end, or reject calls. VoiceAware lets you hear your own voice during calls, providing a more natural conversation experience.

Controls

The headphones feature intuitive controls located on the ear-cup for easy management of audio playback, calls, and noise control modes. These include media control buttons and touch control functionality.





Detail of the control buttons and ports located on the earcup, allowing for easy management of music, calls, and noise control features.

MAINTENANCE

Proper care and maintenance will extend the lifespan of your JBL Tune 670NC headphones:

- **Cleaning:** Use a soft, dry cloth to clean the earcups and headband. Avoid using harsh chemicals or abrasive materials.
- **Storage:** When not in use, store the headphones in a cool, dry place. The foldable design allows for compact storage, protecting them from damage.
- **Moisture:** The headphones are not water resistant. Avoid exposure to liquids, excessive humidity, or extreme temperatures.



The headphones feature a foldable design, making them compact and easy to store or transport, protecting them when not in use.

TROUBLESHOOTING

If you encounter issues with your JBL Tune 670NC headphones, refer to the following common problems and solutions:

Problem	Possible Cause	Solution
---------	----------------	----------

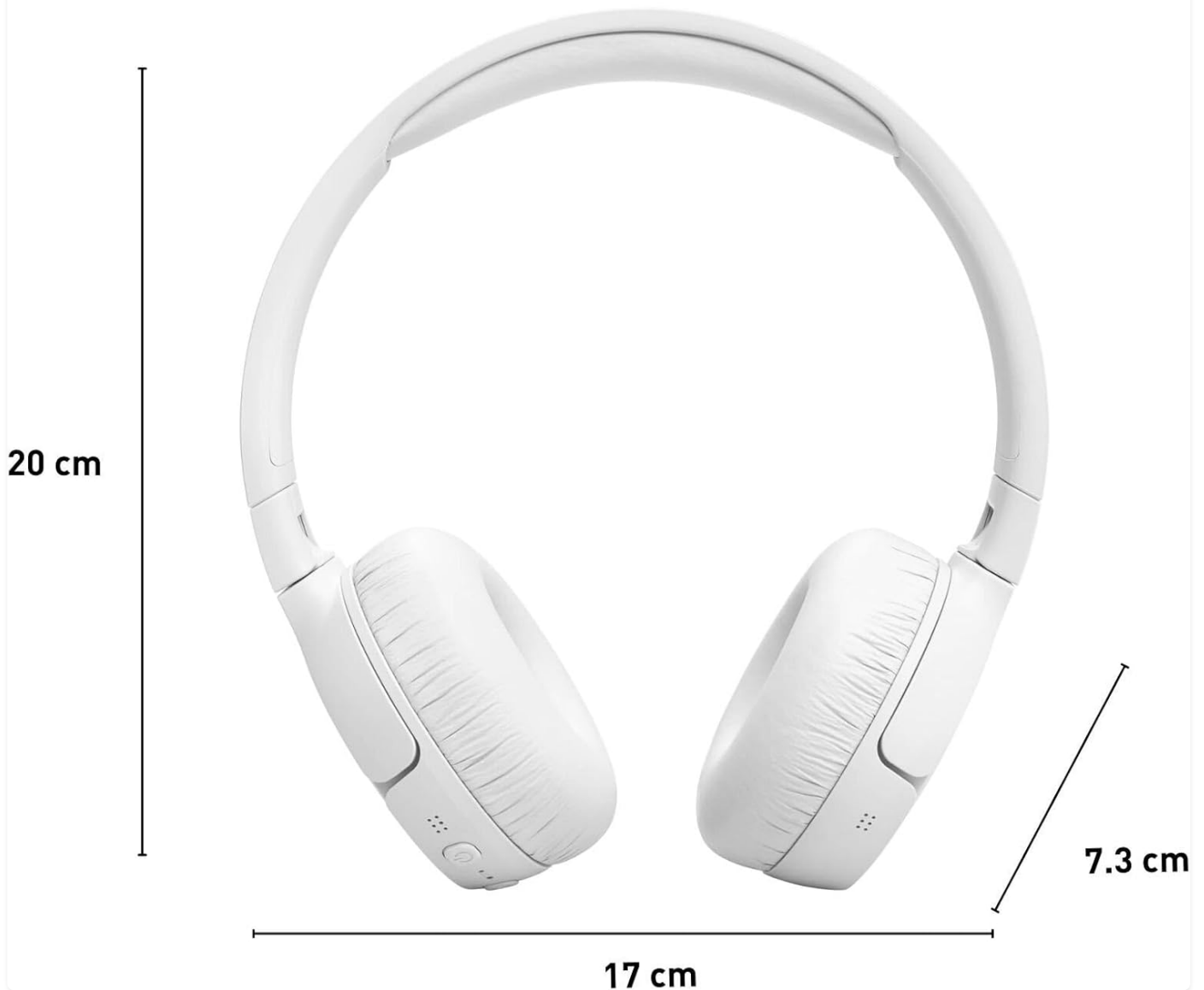
Problem	Possible Cause	Solution
Headphones do not power on.	Low battery.	Charge the headphones fully.
Cannot pair with device.	Headphones not in pairing mode; device Bluetooth off; too far from device.	Ensure headphones are in pairing mode (flashing blue LED). Turn device Bluetooth off and on. Move headphones closer to device.
No sound or low volume.	Volume too low on headphones or device; incorrect audio output selected on device.	Increase volume on both headphones and device. Check device's audio output settings.
Noise Cancelling not effective.	ANC not activated; improper fit.	Activate ANC via the ear-cup controls or JBL Headphones App. Adjust headphones for a snug fit over your ears.

SPECIFICATIONS

Detailed technical specifications for the JBL Tune 670NC Wireless On-Ear Headphones:

Feature	Detail
Model Name	JBL Tune 670NC
Connectivity Technology	Wireless (Bluetooth 5.3)
Noise Control	Adaptive Noise Cancellation
Battery Life	Up to 70 Hours
Charging Time	2 Hours
Audio Driver Type	Dynamic Driver
Frequency Range	20 Hz - 20,000 Hz
Impedance	32 Ohm
Ear Placement	On Ear
Control Type	Media Control, Touch
Special Features	Foldable, Multipoint Pairing, Noise Cancellation, Rechargeable Battery, Volume Control
Material	Plastic
Item Weight	174 Grams (6.1 ounces)
Product Dimensions	6.69 x 2.87 x 7.87 inches
Color	White

DIMENSIONES



The physical dimensions of the JBL Tune 670NC headphones, providing an understanding of their size and fit.

WARRANTY AND SUPPORT

For information regarding warranty coverage, technical support, or service inquiries for your JBL Tune 670NC headphones, please refer to the official JBL website or contact their customer service directly. Keep your proof of purchase for warranty claims.

Note: This product is listed as "Renewed". Please consult your seller or JBL for specific warranty terms applicable to renewed products.