

Manuals+

[Q & A](#) | [Deep Search](#) | [Upload](#)

manuals.plus /

› [LANDOT](#) /

› [LANDOT HS168 2-in-1 Ceramic Hair Straightener and Curler Instruction Manual](#)

LANDOT HS168

LANDOT HS168 2-in-1 Ceramic Hair Straightener and Curler Instruction Manual

Model: HS168

INTRODUCTION

This manual provides essential instructions for the safe and effective use of your LANDOT HS168 2-in-1 Ceramic Hair Straightener and Curler. Please read all instructions carefully before use and retain this manual for future reference.

SAFETY INFORMATION

WARNING: Burn Hazard, Electric Shock Risk, Fire Risk.

- Surfaces become extremely hot during operation. Avoid direct contact with skin.
- Keep this appliance away from water. Do not use near bathtubs, sinks, showers, or any other water sources.
- Unplug the appliance when not in use. Do not leave it unattended while plugged in.
- Keep out of reach of children.
- Ensure your hands are dry before plugging in or unplugging the appliance.
- Do not use if the cord is damaged. Contact customer support for assistance.

PRODUCT FEATURES

- **2-in-1 Functionality:** Designed for straightening, curling, and waving hair.
- **Ceramic Titanium Plates:** Provides fast, even heat distribution and a smooth glide, reducing frizz and enhancing shine.
- **Twist & Curl Technology:** Unique twisted and curved plates guide hair for various styles.
- **Variable Temperature Settings:** 12 settings ranging from 250°F to 450°F (120°C to 230°C) with an LCD digital display, suitable for all hair types.
- **Fast Heat-Up:** Reaches desired temperature in approximately 30 seconds.
- **Safety Shut-Off:** Automatic safety shut-off after 60 minutes of inactivity.

- **Dual Voltage:** 100-240V for worldwide travel compatibility.
- **Swivel Cord:** Professional length 2.0m (6.5 ft) 360° swivel cable for tangle-free styling.



Image: The LANDOT HS168 2-in-1 Hair Straightener and Curler, showcasing its sleek gold design and digital temperature display.

FOR ALL HAIRKIND.

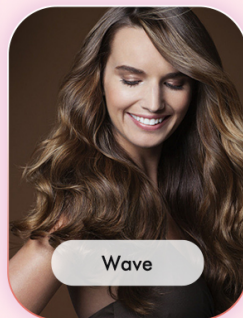
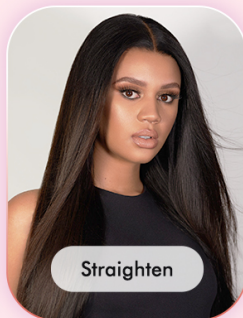
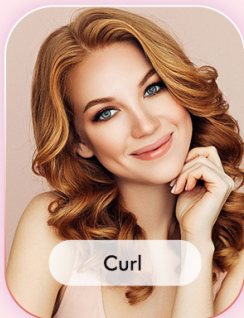


Image: A detailed diagram highlighting the key features of the LANDOT HS168, including its unique twisted plates, 12 temperature settings, LCD display, and swivel cable for ease of use.

SETUP

1. Unpack the appliance and all accessories (silicone heat-resistant mat, clips, heat-protective glove, velvet bag).
2. Place the appliance on a heat-resistant surface, such as the included silicone mat, ensuring it is away from flammable materials.
3. Ensure your hands are dry, then plug the power cord into a suitable electrical outlet (100-240V).

OPERATING INSTRUCTIONS

Power On/Off and Temperature Adjustment

1. Press and hold the power button to turn the appliance on. The LCD display will illuminate.
2. Use the '+' and '-' buttons to adjust the temperature. The LCD display will show the current temperature.
3. Allow approximately 30 seconds for the appliance to reach the selected temperature.
4. To turn off, press and hold the power button again.

Recommended Temperature Settings

Hair Type	Temperature Range
Thin, Fine, Damaged, or Bleached Hair	250°F - 310°F (120°C - 150°C)
Normal, Healthy Hair	320°F - 390°F (160°C - 190°C)
Thick, Difficult to Style Hair	410°F - 450°F (200°C - 230°C)

Multiple Temperatures Suitable For All Hair Types



Image: The LANDOT HS168 displaying various temperature settings recommended for thin/fine, normal/healthy, and thick/difficult-to-style hair types.

Styling Techniques

Ensure hair is clean, dry, and detangled before styling. For best results, use a heat protectant spray.

- **For Straightening:**

Take a small section of hair. Clamp the appliance near the roots and glide it slowly and steadily down the hair section without twisting. Repeat until desired straightness is achieved.

STRAIGHTEN HAIR

Fast-heating **ceramic plates** glide through hair to leave it **silky-smooth** and **frizz-free** in a single stroke



Image: A woman demonstrating the straightening technique with the LANDOT HS168, showing how to achieve silky-smooth, frizz-free hair.

- **For Waves:**

Take a small section of hair. Clamp the appliance near the roots, twist it 180° (half turn), and glide it slowly down the hair section. The twisted plates will help create a natural wave.

CURL CONFIDENCE

Twist 180° and glide down for waves
glide slower for curls
with light grip on the cool tip



Image: A woman using the LANDOT HS168 to create soft waves in her hair, illustrating the 180° twist and glide technique.

- **For Curls:**

Take a small section of hair. Clamp the appliance near the roots, twist it 360° (full turn), and glide it slowly down the hair section. Maintain a light grip on the cool tip for better control. The full twist will create a more defined curl.

MAINTENANCE AND CARE

- Always unplug the appliance and allow it to cool completely before cleaning.
- Wipe the plates and exterior with a soft, damp cloth. Do not use abrasive cleaners or harsh chemicals.

- Ensure no water enters the appliance.
- Store the appliance in its velvet bag in a dry, safe place, away from children.
- Do not wrap the power cord around the appliance, as this can damage the cord.

TROUBLESHOOTING

Problem	Possible Cause	Solution
Appliance does not turn on.	Not plugged in correctly, power outlet issue, or internal fault.	Ensure the plug is fully inserted. Test the outlet with another device. If still not working, contact customer support.
Appliance not heating up.	Temperature setting too low, or internal heating element issue.	Check the temperature setting on the LCD display and increase if necessary. Allow 30 seconds for heat-up. If problem persists, contact customer support.
Hair is snagging or pulling.	Hair is not fully detangled, or plates are not clean.	Ensure hair is completely detangled before use. Clean the plates as per maintenance instructions.
Styling results are not as expected.	Incorrect temperature setting for hair type, or improper technique.	Refer to the "Recommended Temperature Settings" and "Styling Techniques" sections. Adjust temperature and technique as needed.

SPECIFICATIONS

- **Model:** HS168
- **Product Dimensions:** 9.84 x 1.97 x 1.97 inches
- **Weight:** 15.17 ounces
- **Plate Material:** Ceramic Titanium
- **Temperature Range:** 250°F - 450°F (120°C - 230°C)
- **Voltage:** 100-240V (Dual Voltage)
- **Wattage:** 45 Watts
- **Automatic Shut-off:** 60 minutes
- **Cord Length:** 2.0 meters (360° swivel)

WARRANTY AND SUPPORT

LANDOT products are designed for quality and reliability. For warranty information or technical support, please refer to the warranty card included with your purchase or contact LANDOT customer service directly.

For further assistance, please visit the official LANDOT website or contact your retailer.

