

## SMALLRIG 4489

# SMALLRIG 11" Rosette Magic Arm (Model 4489) Instruction Manual

Brand: SMALLRIG | Model: 4489

## 1. OVERVIEW

The SMALLRIG 11" Rosette Magic Arm (Model 4489) is a versatile accessory designed for content creators, offering a robust and flexible solution for mounting various camera equipment. Featuring the innovative HawkLock H21 Quick Release Structure, this magic arm ensures efficient and secure attachment of monitors, LED lights, and camera cages. Its anti-twist design, high load capacity, and smooth adjustment capabilities make it an essential tool for professional video production and photography setups.



## Exclusive QR-Slide Structure

Press the button to flare the pins, slide the rail into the groove, and lock it by releasing the button.

*Figure 1: General view of the SMALLRIG 11" Rosette Magic Arm.*

## 2. PRODUCT FEATURES

- **Quick Release Structure:** Features an exclusive quick-release slider slot for fast and secure installation by pressing a button and sliding into the groove.
- **Anti-Twist Design:** Equipped with 1/4"-20 screws and locating pins on the top plate to prevent equipment deflection, ensuring shooting stability.
- **3kg Load Capacity:** The ball head's spiral pattern enhances friction, supporting a maximum load of up to 3kg (6.6 lbs).
- **Smooth Adjustment:** Stainless steel gear joints with springs facilitate fluid angle adjustments. The hand screw knob includes a built-in thrust bearing for one-touch locking.
- **Premium Construction:** Made from aircraft-grade aluminum alloy and stainless steel, utilizing integral CNC machining for exceptional sturdiness and durability.

## 3. SETUP AND INSTALLATION

Follow these steps to properly set up and install your SMALLRIG 11" Rosette Magic Arm:

1. **Attach to Mounting Point:** Secure the base of the magic arm to your desired mounting point (e.g., tripod, cage, desk clamp) using the appropriate 1/4"-20 screw or other compatible attachment. Ensure it is tightened securely.
2. **Install Accessory:** For accessories with 1/4"-20 threads and anti-twist pin holes (like monitors or LED lights), align the accessory with the top plate of the magic arm. Press the quick-release button, slide the accessory into the groove, and release the button to lock it in place. The anti-twist pins will engage to prevent rotation.
3. **Tighten for Security:** Use the included Allen wrench to further tighten the 1/4"-20 screws on the top plate if additional security is required, especially for heavier loads or dynamic shooting environments.

## Anti-Twist Design

Built-in 1/4"-20 screw and detachable locating pins.

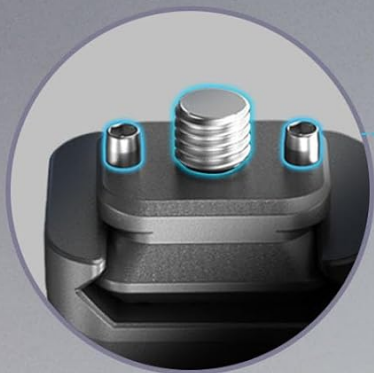


Figure 2: The anti-twist design with 1/4"-20 screws and locating pins ensures secure attachment of accessories.

## 4. OPERATION

The SMALLRIG 11" Rosette Magic Arm offers flexible positioning and secure locking for your equipment:

- **Adjusting Angle:** Loosen the central hand screw knob to adjust the angle of the magic arm. The stainless steel

gear joints allow for smooth, precise 360-degree adjustments.

- **Locking Position:** Once the desired angle is achieved, tighten the central hand screw knob. The built-in thrust bearing ensures a firm, one-touch lock, preventing any unwanted movement.
- **Load Management:** Always ensure the total weight of your mounted equipment does not exceed the maximum load capacity of 3kg (6.6 lbs) to maintain stability and prevent damage.
- **Wide Compatibility:** This magic arm is compatible with a variety of devices including monitors, LED lights, and SmallRig action camera cages (e.g., 4119B, 4088B).

## Adjustable at Any Angle

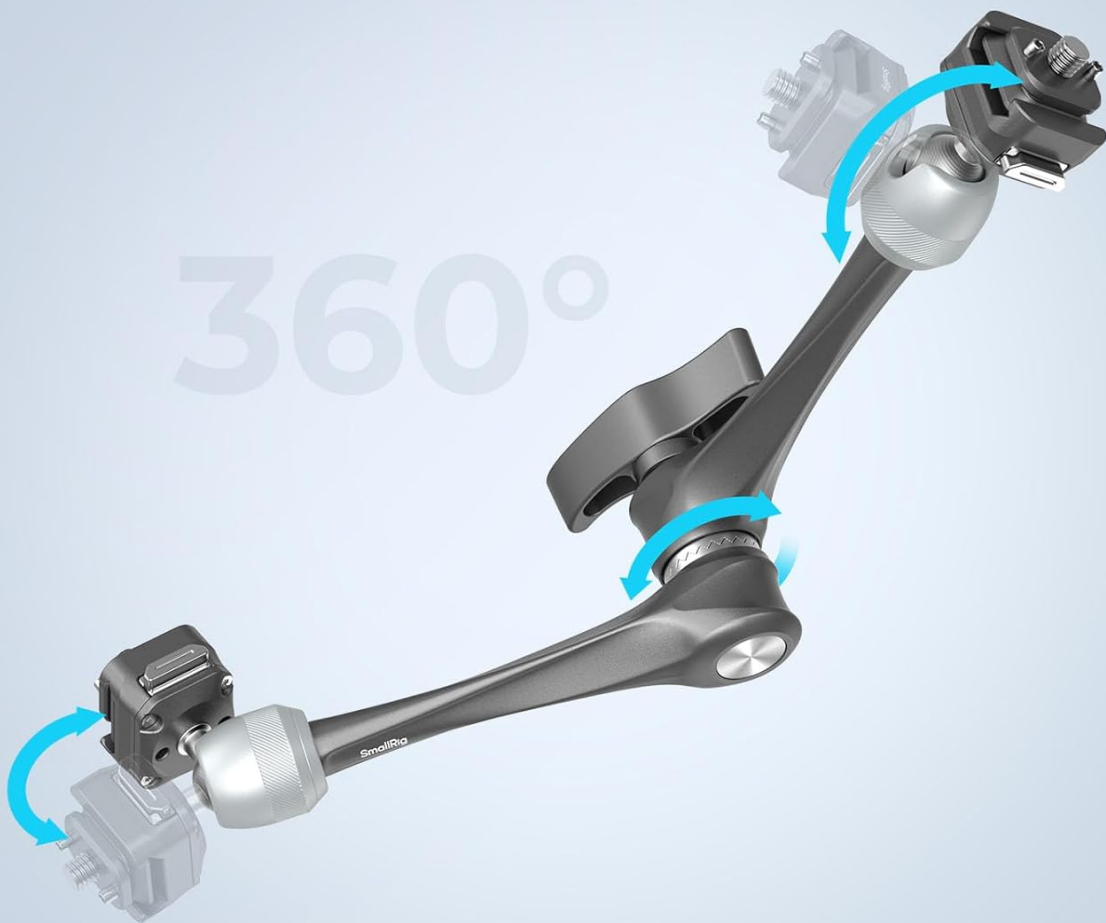


Figure 3: The magic arm allows for 360-degree adjustment to achieve any desired angle.

# Load up to 3kg / 6.6lb

The ball head's surface features a spiral pattern that enhances friction for a load capacity of up to 3kg.



*Figure 4: The ball head's spiral pattern enhances friction for a secure load capacity of up to 3kg.*

Your browser does not support the video tag.

*Video 1: Demonstration of the SmallRig Rosette Magic Arm's features and usage.*

## 5. MAINTENANCE

To ensure the longevity and optimal performance of your SMALLRIG 11" Rosette Magic Arm, follow these maintenance guidelines:

- **Cleaning:** Wipe the arm with a soft, dry cloth after each use to remove dust and debris. Avoid using harsh chemicals or abrasive materials that could damage the finish.
- **Lubrication:** Periodically check the moving parts, especially the ball heads and rosette joints. If movement becomes stiff, apply a small amount of silicone-based lubricant to the joints.
- **Storage:** Store the magic arm in a clean, dry environment away from extreme temperatures and humidity. Ensure all knobs are slightly loosened to relieve pressure on the joints during storage.
- **Inspection:** Regularly inspect all screws, pins, and joints for any signs of wear, damage, or loosening. Tighten

any loose screws with the provided Allen wrench.

## 6. TROUBLESHOOTING

If you encounter any issues with your SMALLRIG 11" Rosette Magic Arm, refer to the following troubleshooting tips:

- **Arm Slips or Doesn't Hold Position:**
  - Ensure the central hand screw knob is fully tightened.
  - Verify that the load does not exceed the 3kg maximum capacity.
  - Check if the ball heads or rosette joints are clean and free of grease or debris that might reduce friction.
- **Accessory Twists or Rotates:**
  - Confirm that the anti-twist locating pins are properly engaged with your accessory.
  - Ensure the 1/4"-20 screw on the top plate is securely tightened, using the Allen wrench if necessary.
- **Difficulty Adjusting Joints:**
  - Loosen the central hand screw knob sufficiently before attempting to adjust the angle.
  - Apply a small amount of silicone lubricant to the joints if they feel stiff.

If the issue persists, please contact SMALLRIG customer support for further assistance.

## 7. TECHNICAL SPECIFICATIONS

Specification	Detail
Product Dimensions	6.06 x 2.56 x 2.09 inches
Item Weight	10.5 ounces
Item Model Number	4489
Max Load Capacity	3kg (6.6 lbs)
Mounting Type	Tripod
Compatible Devices	Camcorders, Cameras, Light, Monitors
Color	Black
Material(s)	Aluminum Alloy, Stainless Steel, Silicone

### What's in the Box:

- Quick Release Rosette Arm
- Allen Wrench

# Package Includes

Quick Release Rosette Arm × 1  
Allen Wrench × 1



## Product Parameters

### ID

4489

### Net Weight:

298.0 ± 5.0g / 10.5 ± 0.2oz

### Product Dimension

154.0 × 65.0 × 53.0mm  
/ 6.0 × 2.6 × 2.0in

### Package Dimension

181.0 × 102.5 × 41.0mm  
/ 7.1 × 4.0 × 1.6in

### Package Weight:

356.0 ± 5.0g  
/ 12.5 ± 0.2oz

### Material(s)

Aluminum Alloy,  
Stainless Steel, Silicone

Figure 5: Contents included in the SMALLRIG 11" Rosette Magic Arm package.

## 8. WARRANTY AND SUPPORT

SMALLRIG products are designed for durability and performance. For specific warranty information, product registration, or technical support, please refer to the official SMALLRIG website or contact their customer service directly. Keep your purchase receipt as proof of purchase for any warranty claims.

For additional support and product information, visit the [SMALLRIG Store on Amazon](#).