

[manuals.plus](#) /

› [Laptomo](#) /

› [S6 Laptop Screen Extender Monitor Portable, 15.6" Dual Screen Monitor for Laptop Plug and Play, FHD 1080P IPS Multi Triple Monitor for 13"-17" Laptops Compatible with Mac/Wins/Android/Dex 15.6" Triple Monitor](#)

Laptomo Laptomo S6

Laptomo S6 Laptop Screen Extender User Manual

Enhance Your Productivity with a Multi-Display Setup

PRODUCT OVERVIEW

The Laptomo S6 Laptop Screen Extender is a portable, 15.6-inch Full HD 1080P IPS multi-monitor solution designed to expand your laptop's display capabilities. It offers dual screens for a triple-display setup (including your laptop's screen), enhancing productivity for various tasks from office work to entertainment. Featuring a high-quality display with 300 nits brightness, 72% NTSC color gamut, and a 1000:1 contrast ratio, it provides vibrant visuals. The low blue light and anti-glare features ensure comfortable extended use. Its multi-functional design supports both extension and mirroring modes, with flexible rotation for optimal viewing angles. The magnetic adsorption function and included portable bag make it highly convenient for travel and mobile offices. It's a plug-and-play device, requiring no driver installation.



The Laptomo S6 Laptop Screen Extender in a triple-display setup.

WHAT'S IN THE BOX

Your Laptomo S6 package includes all necessary components for a seamless setup:

- S6 Laptop Screen Extender (1 unit)
- USB-C to USB-A Cables (2 units)
- USB-C to USB-C Cables (2 units)
- Type-C to HDMI Cables (2 units)
- Sleeve Stand (1 unit)
- Single Screen Stand (1 unit)
- Storage Bag (1 unit)
- User Manual (1 unit)

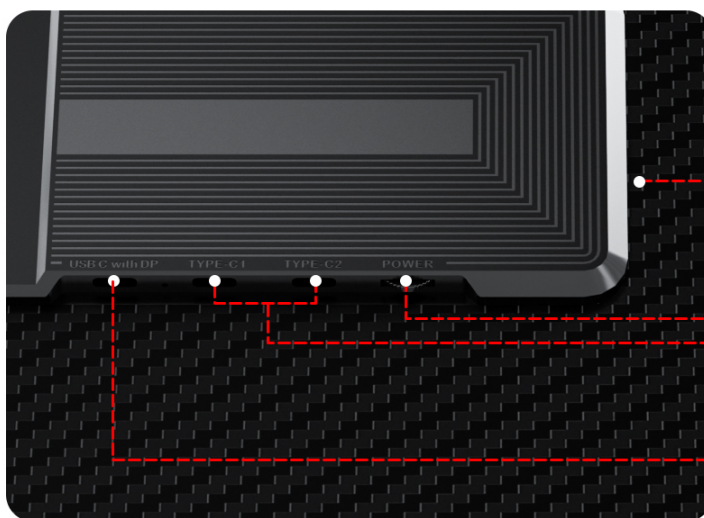


All components included with the Laptomo S6 Laptop Screen Extender.

SETUP AND INSTALLATION

Setting up your Laptomo S6 is straightforward and driver-free. Follow these steps for a quick installation:

1. Expand the stand and assemble the screen stand. Pay attention to the left and right screen labels for correct placement.
2. Adjust the stand to the appropriate supporting angle for stability.
3. Place the stand behind your computer screen.
4. Complete the installation of the dual-screen support.



Detailed Interface Explanation of S6

Speaker Location

Power (Multifunction) Button

This button is used to adjust brightness, sound contrast, and other parameters.

Type-C1 & Type-C2

These are full-featured Type-C ports. Connecting to a USB 3.0 or higher version Type-C port will activate one screen.

USB-C with DP Port

This port can only connect to Type-C to HDMI cables.

Standard Mode Installation Steps.

Installation Video Guide

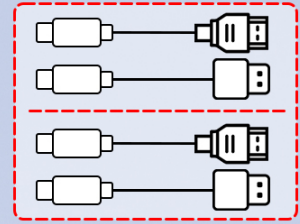
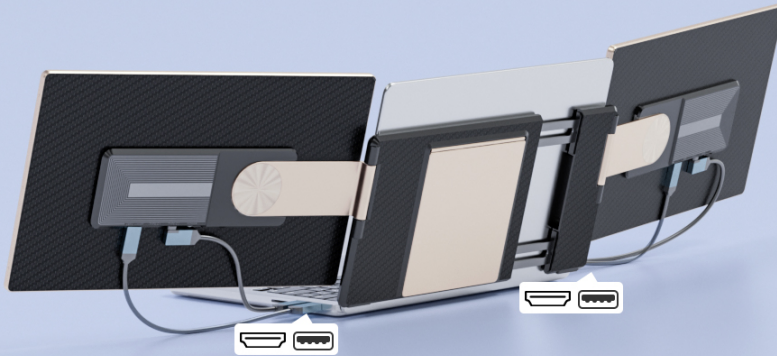
Watch this video for a detailed guide on assembling your Laptomo S6 laptop screen extender.

OPERATING MODES

The Laptomo S6 offers versatile operating modes to suit your needs, including extension and mirroring. The 235-degree horizontal rotation and 90-degree vertical rotation allow for multiple screen combinations and viewing angles.

Seamlessly Expand Your Workspace

Dual Screen Type-C to HDMI + Type-C to USB-A Connections

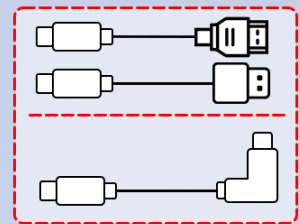
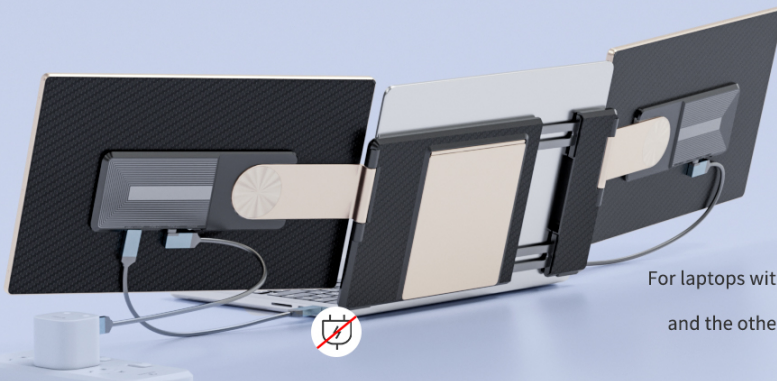


For laptops with two HDMI and two USB-A ports connect each screen using Type-C to HDMI and Type-C to USB-A

Dual Screen Horizontal Setup for an expanded workspace.

Optimize Viewing with Vertical and Horizontal Modes

Type-C to Type-C + Type-C to HDMI with External Power



For laptops with one USB 3.0 Type-C port and external power needs connect one screen using Type-C to Type-C and the other using Type-C to HDMI with Type-C to USB-A/Type-C with external power

Dual Screen Front and Back Vertical Setup.

Maximize Productivity with Front and Back Display

Dual Screen Setup for MacBook with MST Hub

For MacBooks with **M1, M2, M3** use an MST Hub to connect dual screens.

For Dual Screens:
Purchase a high-quality MST Hub that supports macOS.
(This MST Hub is not included in the package and needs to be purchased separately.)
Connect the MST Hub to an available USB-C port on the MacBook.
Use Type-C to Type-C cables to connect both S6 screens to the MST Hub.
Ensure the correct ports on the S6 are used.

Dual Screen Front and Back Horizontal Setup.

Operating Modes Video Guide

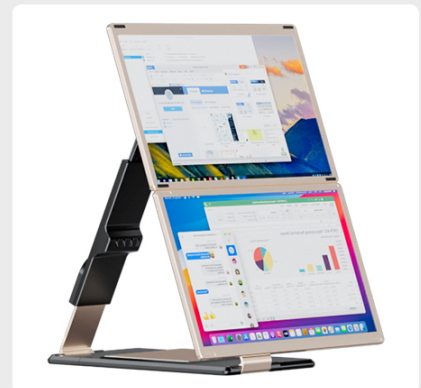
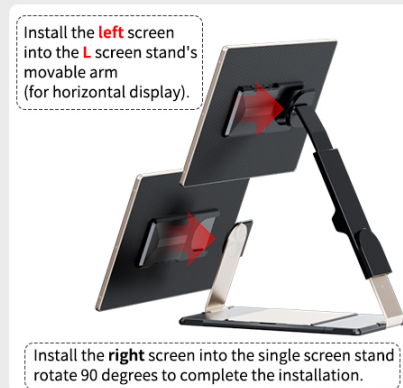
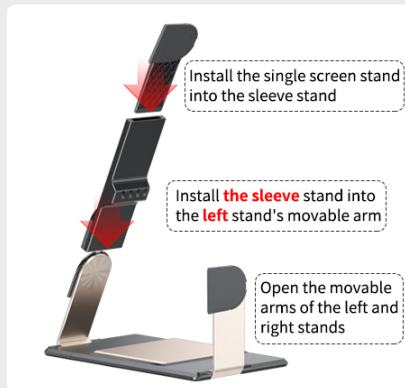
Learn about the effortless setup and multiple modes of the Laptomo S6 for various occasions.

CONNECTIVITY OPTIONS

The Laptomo S6 provides multiple connectivity options to accommodate different device needs, including USB-C, USB-A, and HDMI. All necessary connection cables are included.

Seamlessly Expand Your Workspace

Dual Screen Horizontal Setup



Detailed Interface Explanation of S6.

Dual Screen Type-C to Type-C Connections



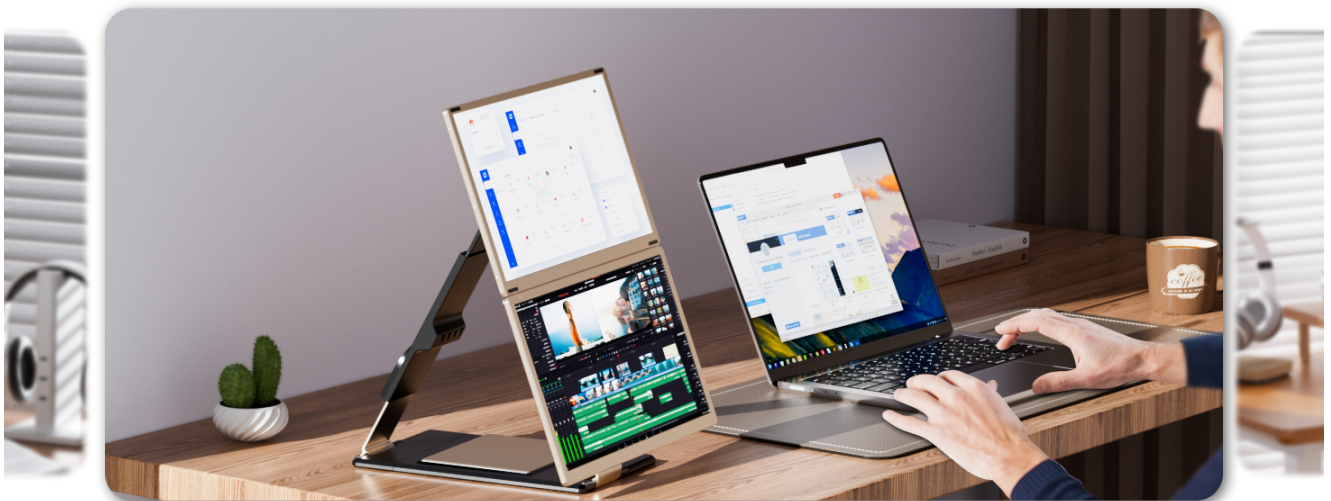
For laptops with two USB 3.0 Type-C ports, connect each screen using a Type-C to Type-C cable.

Mixed Connections (Type-C to Type-C + Type-C to HDMI with Type-C to USB-A)



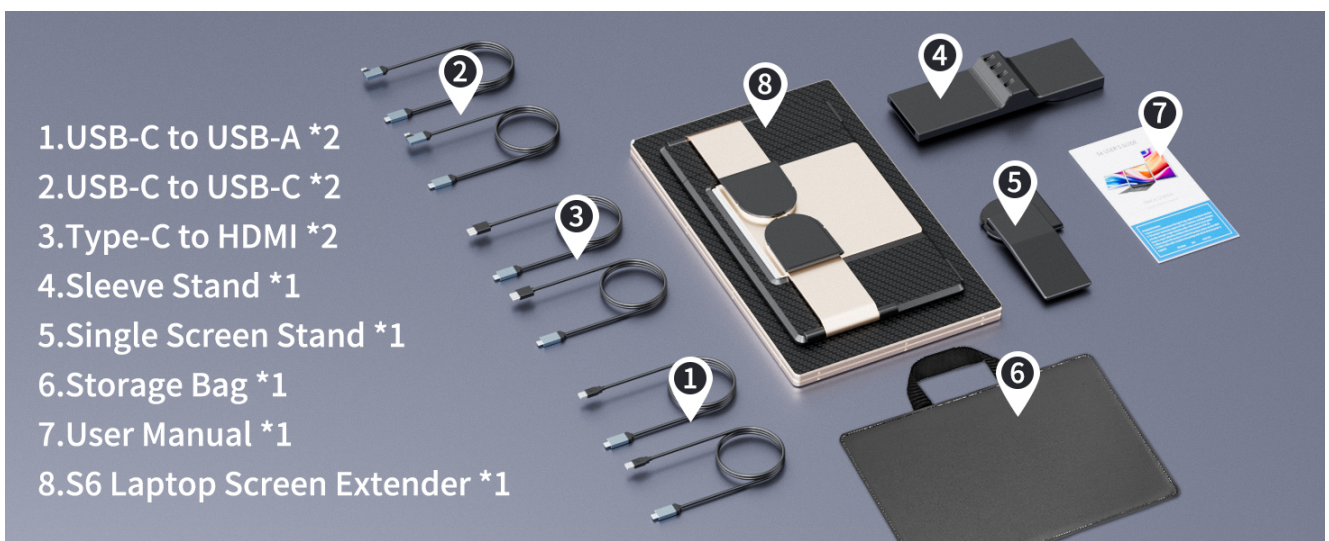
For laptops with one USB 3.0 Type-C port and one HDMI port, connect one screen using Type-C to Type-C and the other using Type-C to HDMI with USB-A.

Dual Screen Type-C to HDMI + Type-C to USB-A Connections



For laptops with two HDMI and two USB-A ports, connect each screen using Type-C to HDMI and Type-C to USB-A.

Type-C to Type-C + Type-C to HDMI with External Power



For laptops with one USB 3.0 Type-C port and external power needs, connect one screen using Type-C to Type-C and the other using Type-C to HDMI with Type-C to external power.

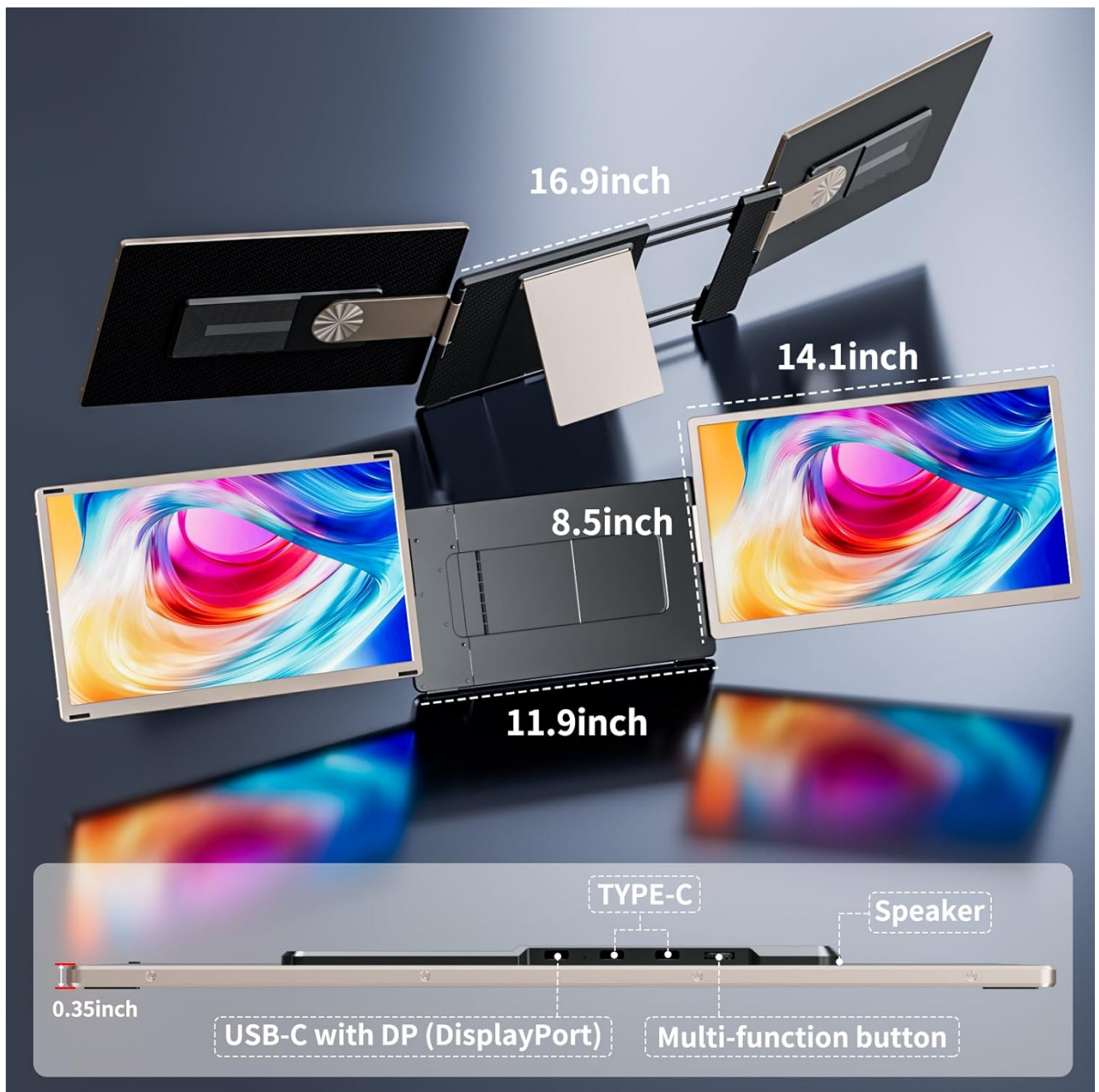
Dual Screen Setup for MacBook with MST Hub



For MacBooks with M1, M2, M3 chips, use an MST Hub to connect dual screens. (MST Hub not included).

SPECIFICATIONS

Feature	Detail
Product Dimensions	13.9 x 8.15 x 1.5 inches
Item Weight	9.11 pounds
Item Model Number	Laptomo S6
Screen Size	15.6 Inches
Resolution	FHD 1080p (1920 x 1080 Pixels)
Aspect Ratio	16:9
Image Brightness	300 nits
Screen Surface Description	Matte



Laptomo S6 Product Dimensions.

Widely Applicable Plug & Play

Not suit :MacOs M1/M2/M3 chip

Suit :M1 Pro/Max M2 Pro/Max M3 Pro/Max



Laptomo S6 Display Features.

MAINTENANCE

To ensure the longevity and optimal performance of your Laptomo S6 Laptop Screen Extender, follow these maintenance guidelines:

- **Cleaning:** Use a soft, lint-free cloth to gently wipe the screen and exterior surfaces. For stubborn smudges, slightly dampen the cloth with water or a screen-safe cleaning solution. Avoid using harsh chemicals, alcohol, or abrasive materials.
- **Storage:** When not in use, store the extender in its portable bag to protect it from dust, scratches, and impacts. Ensure the screens are properly folded and secured.
- **Handling:** Handle the device with care. Avoid dropping it or subjecting it to excessive force, especially on the screen panels and hinges.
- **Temperature:** Do not expose the device to extreme temperatures or direct sunlight for prolonged periods.
- **Cables:** Keep the connection cables organized and free from kinks or excessive bending to prevent damage.

TROUBLESHOOTING

If you encounter any issues with your Laptomo S6, please refer to the common troubleshooting tips below:

- **No Signal/Black Screen:**

- Ensure all cables (USB-C, HDMI) are securely connected to both the extender and your laptop.
- Verify that your laptop's ports support video output (e.g., USB-C with DisplayPort Alt Mode).
- Check your laptop's display settings to ensure the external monitors are detected and configured for extension or mirroring.
- Try restarting your laptop.

- **Flickering/Unstable Display:**

- Ensure sufficient power is supplied. If using a single USB-C cable for power and video, try connecting an additional power source if available.
- Check the cable for damage and try a different cable if possible.
- Adjust the display resolution or refresh rate in your laptop's settings.

- **Incorrect Display Orientation:**

- Go to your laptop's display settings and adjust the orientation (Landscape, Portrait) for each external monitor.

- **Compatibility Issues (Mac M1/M2/M3):**

- As noted, MacBooks with M1, M2, or M3 chips require an MST Hub for dual-screen functionality. Ensure you are using a compatible MST Hub that supports macOS.

If these steps do not resolve your issue, please contact customer support.

WARRANTY AND SUPPORT

Laptomo is committed to customer satisfaction. Your S6 Laptop Screen Extender comes with professional customer service to ensure a positive user experience. We respond swiftly to address compatibility and connection concerns promptly.

- **Customer Support:** Enjoy peace of mind with round-the-clock customer support, ensuring timely resolution of any issues.
- **Contact Information:** For any inquiries or support needs, please refer to the contact details provided in your User Manual or visit the Laptomo official store on Amazon.