

## CLABEL CLABEL 221B (2 Inch-Gray)

# CLABEL 221B Inkless Label Printer User Manual

Model: 2 Inch-Gray

## 1. INTRODUCTION

Thank you for choosing the CLABEL 221B Inkless Label Printer. This portable thermal printer is designed for versatile labeling needs across various applications, including small businesses, retail, and office organization. It offers convenient connectivity via Bluetooth for mobile devices and USB for computers, supporting a wide range of label types without the need for ink. This manual provides essential information for setting up, operating, maintaining, and troubleshooting your device.



Image 1.1: The CLABEL 221B Inkless Label Printer, shown in grey, alongside examples of printed labels such as a name tag with a barcode, a product information label, and a 'Thank you' sticker. A roll of thermal labels is also visible.

## 2. SAFETY INFORMATION

Please read all safety instructions carefully before using the device to ensure safe and proper operation.

- Do not disassemble, repair, or modify the printer yourself. This may cause electric shock, fire, or damage to the device.
- Keep the printer away from water, moisture, and direct sunlight.
- Use only the recommended power adapter and USB cable.
- Ensure the printer is placed on a stable, flat surface during operation.
- Avoid touching the print head immediately after printing, as it may be hot.

## 3. PACKAGE CONTENTS

Verify that all items are present in the package:

- CLABEL 221B Inkless Label Printer
- USB Cable
- Roll of Labels (starter roll)
- User Manual

## 4. PRODUCT OVERVIEW

The CLABEL 221B is a compact and portable thermal label printer. It features a simple design with a power button, status indicator light, and a label output slot. The device uses direct thermal technology, eliminating the need for ink cartridges.

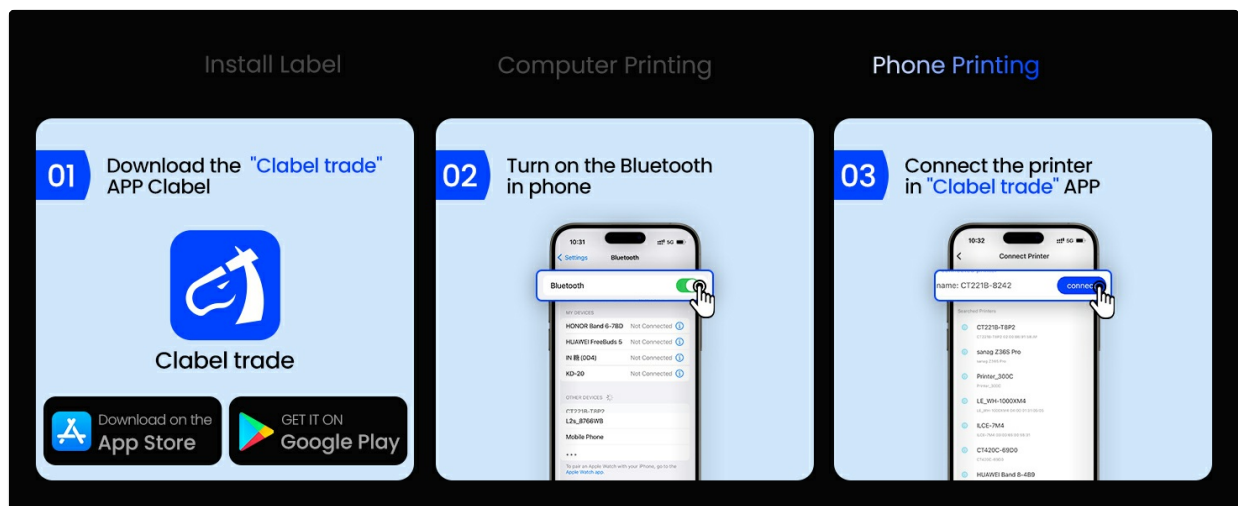


Image 4.1: This image highlights key features of the CLABEL 221B, including its lightweight and portable design (8.4 oz), fast charging, ABS material for long service life, high-quality print head for clearer prints, inkless thermal printing, and up to 4 hours of continuous printing.

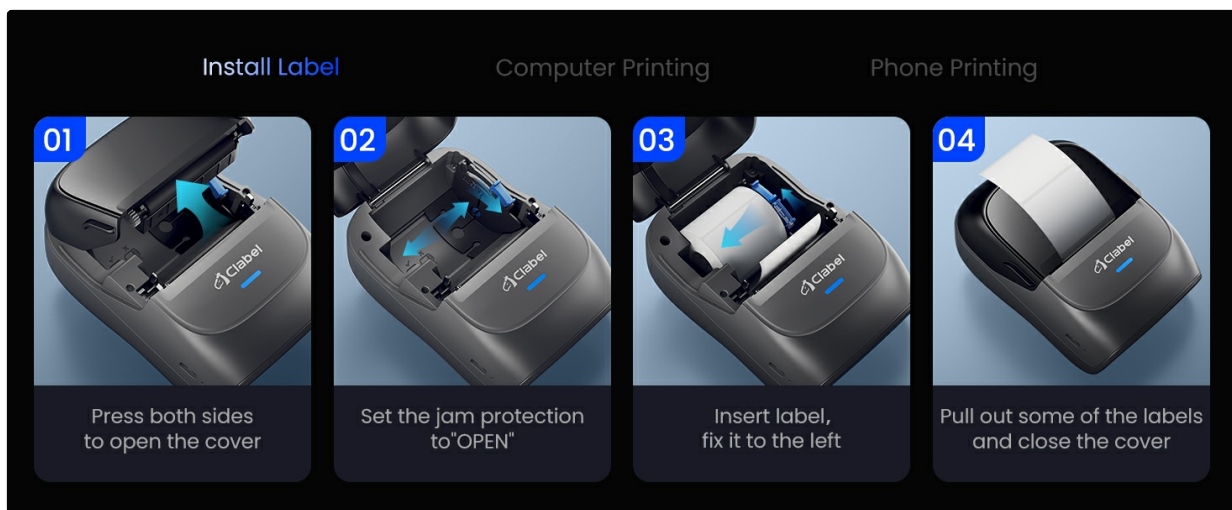


Image 4.2: An illustration detailing the layered structure of high-quality thermal paper, emphasizing properties such as water resistance, oil proofing, high temperature resistance, tear resistance, and wear resistance. Layers include protective, thermosensitive, base, isolation, and adhesive layers.

## 5. SETUP

### 5.1 Initial Charging

Before first use, fully charge the printer using the provided USB cable and a compatible power adapter (not included). The status indicator light will show charging status.

### 5.2 Loading Labels

Follow these steps to correctly load the thermal labels into your printer:

1. Press both sides of the printer to open the cover.
2. Set the jam protection to the 'OPEN' position.
3. Insert the label roll, ensuring it is fixed to the left side.
4. Pull out some of the labels and close the cover.



Image 5.1: A visual guide demonstrating the four steps for installing labels: 1. Press sides to open cover. 2. Set jam protection to 'OPEN'. 3. Insert label roll, fix to the left. 4. Pull out labels and close cover.

### 5.3 App Installation and Connection (Phone)

To print from your smartphone or tablet:

1. Download the 'Clabel trade' app from your device's app store (App Store for iOS, Google Play for Android).
2. Turn on Bluetooth on your phone.

3. Open the 'Clabel trade' app and connect to the printer. The app will typically detect nearby CLABEL printers.



Image 5.2: A three-step guide showing how to connect the printer to a phone: 1. Download the 'Clabel trade' app. 2. Turn on Bluetooth on the phone. 3. Connect the printer within the 'Clabel trade' app.

## 5.4 PC Connection

To print from your computer:

1. Turn on the printer and connect it to your computer via the provided USB cable.
2. Download the 'Clabel trade' software from the official CLABEL website.
3. Open the software, tap 'New' to create a label.
4. Select the 'Clabel-CT221B' printer and click 'Print'.

Image 5.3: A four-step guide illustrating PC printing: 1. Turn on printer and connect via USB. 2. Download 'Clabel trade' software. 3. Create a new label. 4. Select printer and print.

## 6. OPERATING THE PRINTER

## 6.1 Basic Printing

Once connected via Bluetooth or USB, you can design and print labels using the 'Clabel trade' app or PC software. The app provides a user-friendly interface for creating various label types.

# Connection with Bluetooth/USB Cable

Print Via App



Image 6.1: The CLABEL 221B printer demonstrating its dual connectivity options, showing it connected to a laptop via a USB cable and wirelessly to a smartphone via Bluetooth. Both devices are displaying label design interfaces.

## 6.2 App Features

The 'Clabel trade' app offers extensive customization options:

- **Free APP & No Privacy Need:** The app is free to use and does not require login or privacy permissions.
- **Multiple Templates:** Access a wide array of free icons, fonts, and frames.
- **Content Types:** Print text, barcodes, QR codes, tables, images, and logos.
- **Advanced Printing Options:** Utilize batch printing, scan printing, and PDF printing options.

# Powerful App Editing



Free APP



No Privacy Need



Multiple Templates



PDF Printing



Fast Printing



Batch Printing



Custom Barcode

Image 6.2: A visual representation of the 'Clabel trade' app's capabilities, including PDF printing, fast printing, batch printing, and custom barcode generation. The app interface on a smartphone shows options for text, images, barcodes, and templates.

## 6.3 Label Compatibility

The CLABEL 221B supports thermal labels with a width of 0.78 inches (20mm) to 2 inches (50mm) and a maximum length of 3.93 inches (100mm). It is compatible with third-party thermal paper, offering flexibility and cost savings.



Image 6.3: The CLABEL 221B printer with its cover open, illustrating how different label roll sizes (25x78mm, 30x70mm, 40x30mm, 50x80mm) can be loaded, highlighting its support for 0.78"-2" width labels.

## 6.4 Applications

The versatility of the CLABEL 221B allows for a wide range of applications:

- **Small Businesses:** Labeling for clothing, crafts, retail, jewelry, etc.
- **Product Labeling:** Address, barcode, QR code, price, date, ingredients.
- **Organization:** File racks, seasoning jars, storage boxes.



Jewellery



Handmade Dessert



Florist Label



Letter



Cheese Label



Wine Classification

Image 6.4: Examples of label applications: labels on jewelry, handmade dessert packaging, florist bouquets, envelopes, cheese products, and wine bottles, demonstrating the printer's versatility.

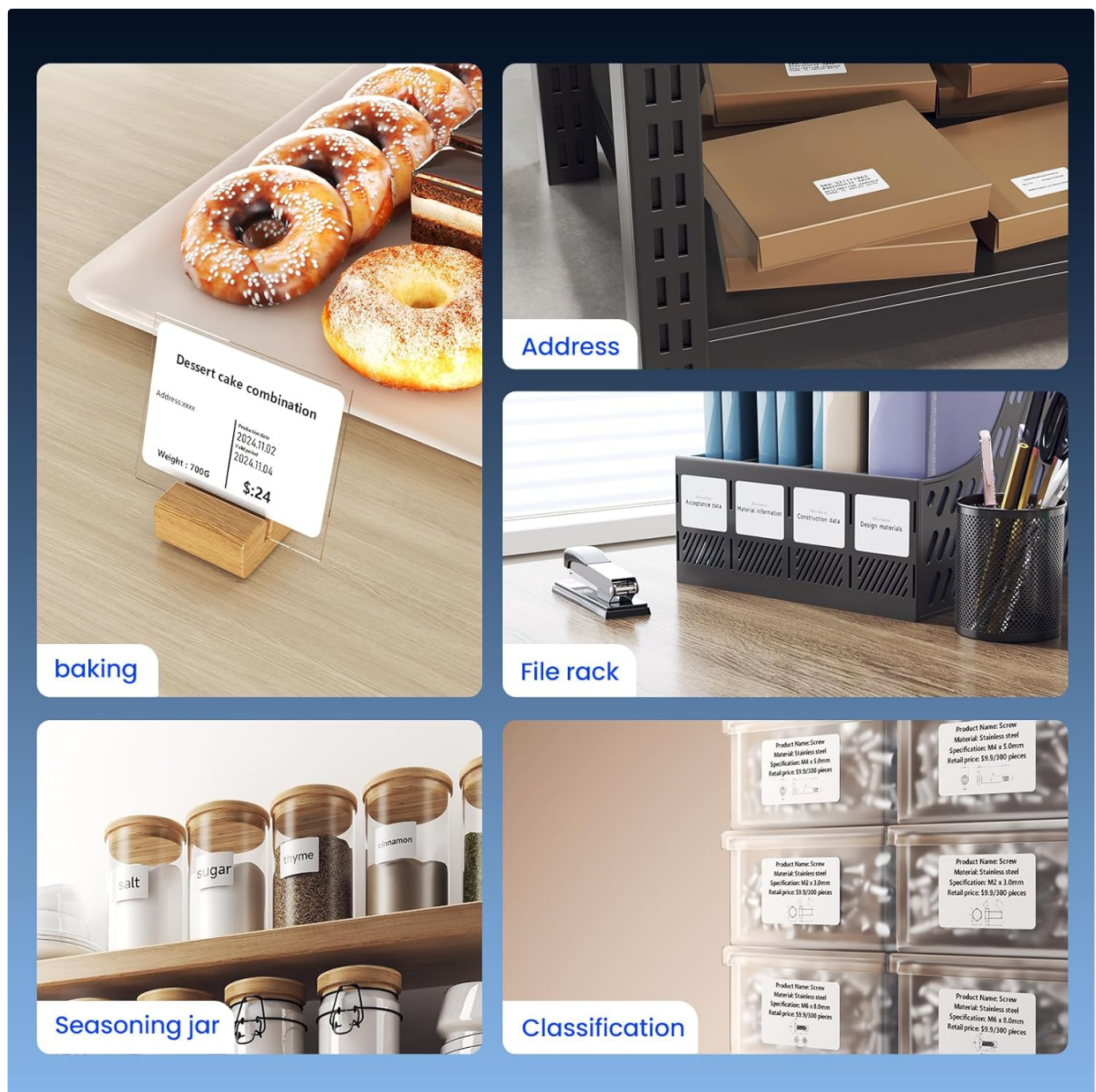


Image 6.5: Further examples of label applications: labels for baked goods, address labels on packages, labels for file rack organization, labels on seasoning jars, and classification labels for storage containers.

## 7. MAINTENANCE

Regular maintenance ensures optimal performance and extends the lifespan of your printer.

- **Cleaning the Print Head:** If print quality degrades, gently wipe the thermal print head with an alcohol swab. Ensure the printer is off and cooled down before cleaning.
- **Cleaning the Exterior:** Use a soft, dry cloth to clean the exterior of the printer. Do not use abrasive cleaners or solvents.
- **Storage:** Store the printer in a cool, dry place away from direct sunlight and extreme temperatures.

## 8. TROUBLESHOOTING

If you encounter issues with your CLABEL 221B printer, refer to the following common problems and solutions:

Problem	Possible Cause	Solution
---------	----------------	----------

Problem	Possible Cause	Solution
Printer does not turn on	Low battery; Power cable not connected	Charge the printer; Ensure power cable is securely connected.
Cannot connect via Bluetooth	Bluetooth off on phone; Printer not discoverable; App issue	Ensure phone Bluetooth is on; Restart printer and app; Re-pair device in app settings.
Poor print quality (faint/streaky)	Print head dirty; Incorrect label type; Low battery	Clean the print head; Use high-quality thermal labels; Charge the printer.
Labels not feeding correctly/jamming	Labels incorrectly loaded; Label roll too wide/narrow	Re-load labels according to instructions (Image 5.1); Ensure label width is within 0.78"-2".
Printer not recognized by PC	USB cable issue; Driver not installed; Printer off	Try a different USB port/cable; Install 'Clabel trade' software/drivers; Ensure printer is on.

## 9. SPECIFICATIONS






Feature	Detail
Model Name	CT221B-Gray
Product Dimensions	2.4"D x 3.4"W x 4.8"H
Item Weight	8.4 ounces
Printing Technology	Thermal
Printer Ink Type	Inkless
Connectivity Technology	Bluetooth, USB
Compatible Devices	Android, iOS, Windows, MAC
Maximum Media Size	2" x 3.93" (50mm x 100mm)
Supported Label Width	0.78" - 2" (20mm - 50mm)
Maximum Black and White Print Resolution	203 DPI
Max Print Speed Monochrome	35 ppm
Control Method	App
Special Feature	Lightweight, Portable

## 10. WARRANTY AND SUPPORT

The CLABEL 221B Inkless Label Printer comes with a Limited Warranty. For specific warranty terms and conditions, please refer to the documentation included with your purchase or visit the official CLABEL website.

For technical support, troubleshooting assistance, or inquiries regarding your product, please contact CLABEL customer service through their official channels. Details can typically be found on the CLABEL website or within the product packaging.

Related Documents

<div></div> <div><p><b>User Manual</b> CT221B Label Printer</p></div> <div></div> <div><p>Please read this user manual guide carefully before operating the product.</p></div>	<p><a href="#">Clabel CT221B Label Printer User Manual - Setup and Operation Guide</a></p> <p>Explore the Clabel CT221B Label Printer with this comprehensive user manual. Learn about packing, components, functions, paper loading, mobile/computer printing, and troubleshooting. Available in multiple languages.</p>
<div><p><b>QR Reader</b></p><ul style="list-style-type: none"><li>Scan the QR code below with a mobile phone to download "Clabel Trade".</li><li>Follow the software instructions below to operate the software.</li></ul></div> <div></div> <div><p><b>Instructions</b></p><p>Download and install the app "Clabel Trade" from Google Play Store or App Store and make it.</p><p>▲ Mobile phone printing (iOS/Android) for Bluetooth version.</p><p><b>Windows</b></p><p>Visit website <a href="https://clabel.com">https://clabel.com</a> to download "Clabel Trade" and drivers.</p><p>▲ Download the driver from the driver cd and read the instructions for driver installation or learn installation on the website.</p></div>	<p><a href="#">CLABEL Label Maker: Installation Guide for Clabel Trade App and Drivers</a></p> <p>Comprehensive guide to installing the Clabel Trade app and drivers for iOS, Android, and Windows devices. Learn how to connect your CLABEL label printer for seamless operation.</p>
<div></div> <div><p><b>User Manual</b> CT221B Label Printer</p></div> <div></div> <div><p>Please read this user manual guide carefully before operating the product.</p></div>	<p><a href="#">Clabel CT221B Label Printer User Manual</a></p> <p>User manual for the Clabel CT221B Label Printer, covering setup, operation, and troubleshooting in multiple languages.</p>
<div><p>Manual software installation on Windows</p><p>Clabel label printer Driver installation tutorial</p></div>	<p><a href="#">Clabel Label Printer Driver Installation Tutorial for Windows</a></p> <p>A comprehensive guide for installing the Clabel label printer driver on Windows operating systems. Learn how to connect your printer, locate the device instance path, download and install the driver, and verify the installation by printing a test page.</p>